

# Retail Opportunity in Center City

2nd and 4th Floor  
Retail Space

3,200 SF / 1,500 SF

**Available for Lease**

1719 Chestnut Street,  
Philadelphia PA 19103



**Larry Steinberg**  
Senior Managing Director  
+1 215 928 7593  
larry.steinberg@colliers.com

**Alexandra Sayer**  
Senior Associate  
+1 215 928 7521  
alexandra.sayer@colliers.com

**Andrew Weinstein**  
Associate  
+1 215 928 7557  
andrew.weinstein@colliers.com

**Colliers**

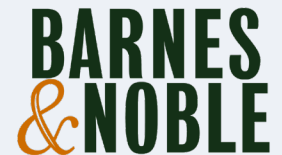
# Rittenhouse Square

# Property Features

- Great visibility with large floor to ceiling storefront windows
- Strong daytime, nighttime and weekend traffic (22,628 Avg pedestrian count per weekday)
- Immediate proximity to 40M SF of Class A office
- Surrounded by dense, affluent residential population
- Join block with Di Bruno Bros, Kura Sushi, Starbucks, Barnes & Noble, Nordstrom Rack, Sugared & Bronzed, and Heyday

1719 Chestnut St

# Join Tenants

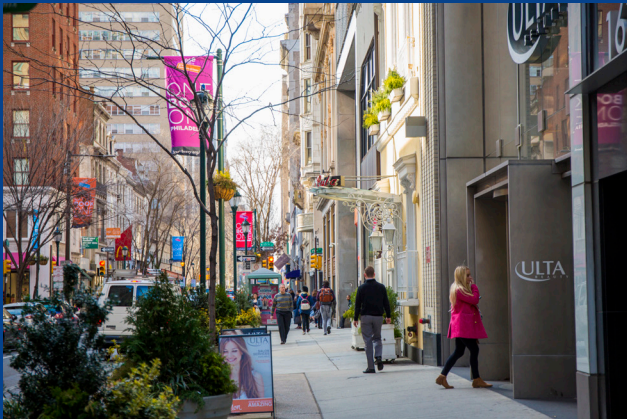


SUGARED + BRONZED



# Rittenhouse Square

Rittenhouse Square is the vibrant center of retail and residential life in Center City. Known for upscale shopping and dining, and surrounded by luxury hotels, the area attracts affluent customers. The local foot traffic and picturesque park setting make it ideal for premium retail ventures, blending historic charm with modern amenities.



# Demographics

	1 Mile	2 Miles	3 Miles
Population	98,628	308,141	519,646
Households	58,186	150,592	238,546
Median HHI	\$99,493	\$81,289	\$107,832
Employees	251,253	390,260	477,192



**Bike  
Score**

92



**Walk  
Score**

100



**Transit  
Score**

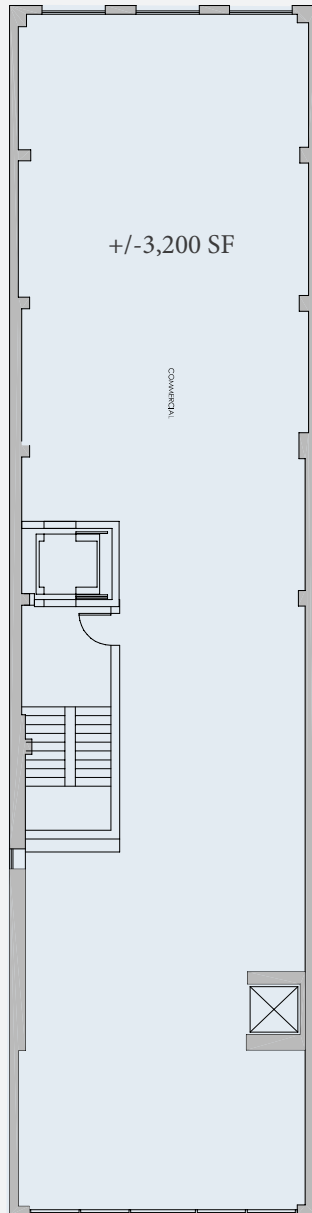
100



Image Credit(s): Visit Philly

# Floor Plan

## SECOND FLOOR



<p><b>19th Street</b></p> <p>Luxury 2 Bedroom by Rittenhouse</p> <p><b>BOYDS &amp; pizza</b></p> <p><b>CVS</b></p>		<p>CVS</p> <p>Boys</p> <p>Playa Bowls</p> <p>&amp;pizza</p>	<p>The Bank of Princeton</p> <p>Crazy Sushi</p> <p>Mandarin Palace</p> <p>Sweetgreen</p> <p>Joan Shepp</p> <p>Taylor Chip, Cookies</p> <p>The Continental</p> <p><b>JOAN SHEPP</b></p> <p><b>ROOST</b> Rittenhouse</p> <p><b>sweetgreen</b></p>
<p><b>BARNES &amp; NOBLE</b></p> <p>NORDSTROM <b>rack</b></p>		<p>Allen Edmonds</p> <p>MAC</p> <p>DiBruno Bros</p> <p>Benjamin Lovell Shoes</p> <p>Ancient</p> <p>Mattress Firm</p> <p>Jacobs</p> <p>Gran Caffè L'Aquila</p> <p>Sephora</p> <p>Barnes &amp; Noble</p> <p>Nordstrom Rack</p>	<p><b>1719 Chestnut St.</b></p> <p>T-Mobile</p> <p>Heyday</p> <p>Sugared + Bronzed</p> <p>Dave's Hot Chicken</p> <p>Just Salad</p> <p>The Shade Store</p> <p>Kura Sushi</p> <p>Grace Loves Lace</p> <p>Paris Baguette</p> <p>Asian Food Hall</p> <p>Cava</p> <p>Starbucks Pickup</p> <p>The Vitamin Shoppe</p> <p><b>SUGARED + BRONZED</b></p> <p><b>CAVA</b></p> <p><b>STARBUCKS COFFEE</b></p> <p><b>HEYDAY</b></p>
<p><b>UNI QLO</b></p> <p>Club Quarters</p> <p><b>RITE AID</b></p> <p><b>OLD NAVY</b></p>		<p>Rite Aid</p> <p>DIG</p> <p>Old Navy</p> <p>Uniqlo</p> <p>WSFS</p> <p><b>Chestnut Street</b></p>	<p>Bloomingdale's Outlet</p> <p>The Children's Boutique</p> <p>J.CREW</p> <p>The Shops at Liberty</p> <p>Kieh'l's</p> <p><b>bloomingdales</b></p>
<p><b>Buffalo EXCHANGE</b></p> <p>Portabella</p> <p><b>STAPLES</b></p>		<p>Portabella</p> <p>Empire Beauty School</p> <p>Buffalo Exchange</p> <p>Amma's</p> <p>Popeyes</p> <p>Samsun Footwear</p> <p>Kid's Footlocker</p> <p>Staples</p>	<p>J. Crew Factory</p> <p>Giovanni's Bar &amp; Grill</p> <p>Five Below</p> <p>Five Guys</p> <p>Footlocker</p> <p>Wendy's</p> <p>Dunkin'</p> <p>Wells Fargo</p> <p><b>five BELOW</b></p> <p><b>Foot Locker</b></p> <p><b>Wendy's</b></p> <p><b>DUNKIN'</b></p> <p><b>WELLS FARGO</b></p>
<p><b>DTLR</b></p> <p><b>DEL FRISCO'S GRILLE</b></p>		<p>Vybe Urgent Care</p> <p>ROOST Midtown</p> <p>Del Frisco's</p> <p>DTLR</p> <p>Philadelphia Film Center</p> <p>Eternity Fashion</p>	<p><b>15th Street</b></p> <p>W Hotel</p> <p>Ritz Carlton</p> <p>Aquimero</p>
<p><b>Broad Street</b></p>			



Accelerating success.

**Colliers**

**Larry Steinberg**

Senior Managing Director

+1 215 928 7593

[larry.steinberg@colliers.com](mailto:larry.steinberg@colliers.com)

**Alexandra Sayer**

Senior Associate

+1 215 928 7521

[alexandra.sayer@colliers.com](mailto:alexandra.sayer@colliers.com)

**Andrew Weinstein**

Associate

+1 215 928 7557

[andrew.weinstein@colliers.com](mailto:andrew.weinstein@colliers.com)

**Colliers**

2005 Market St, Suite 4010

Philadelphia, PA 19103

This document has been prepared by Colliers for advertising and general information only. Colliers makes no guarantees, representations or warranties of any kind, expressed or implied, regarding the information including, but not limited to, warranties of content, accuracy and reliability. Any interested party should undertake their own inquiries as to the accuracy of the information. Colliers excludes unequivocally all inferred or implied terms, conditions and warranties arising out of this document and excludes all liability for loss and damages arising there from. This publication is the copyrighted property of Colliers and/or its licensor(s). Copyright © 2023. All rights reserved. This communication is not intended to cause or induce breach of an existing listing agreement. Insert regional office name here. **Philadelphia Tri-State Region.**