



**Public Storage**

80

**90 S SPRUCE AVE**

**SMALL OFFICE & FLEX WAREHOUSE SPACES AVAILABLE FOR LEASE**

New market ready suites for immediate occupancy

Easy access to Highway 101

5 minutes to San Francisco International Airport

Grade level door for ground floor units

Ample on-site parking

Flexible lease terms

**SUITE AVAILABILITY**

Suite #	Total SF	Rent	Nets	Type	Floor	Date Available
90J	1,560	\$1.95 NNN	\$0.46 PSF	Warehouse/Flex	Ground Floor	Now
90N	1,560	\$1.95 NNN	\$0.46 PSF	Warehouse/Flex	Ground Floor	Now
90U	1,560	\$1.95 NNN	\$0.46 PSF	Warehouse/Flex	Ground Floor	Now
90G	1,620	\$1.55 MG	-	Office	Second Floor	Now
90L	1,620	\$1.55 MG	-	Office	Second Floor	Now
90C5	742	\$1.75 MG	-	Office	Second Floor	Now
90W1	338	\$1.95 MG	-	Office	Second Floor	Now
90W2	303	\$1.95 MG	-	Office	Second Floor	Now
90W3	979	\$1.95 MG	-	Office	Second Floor	Now

*For more leasing information contact*

**JOHN MCLELLAN**  
415.418.9880  
john.mclellan@kidder.com  
LIC N° 01869489

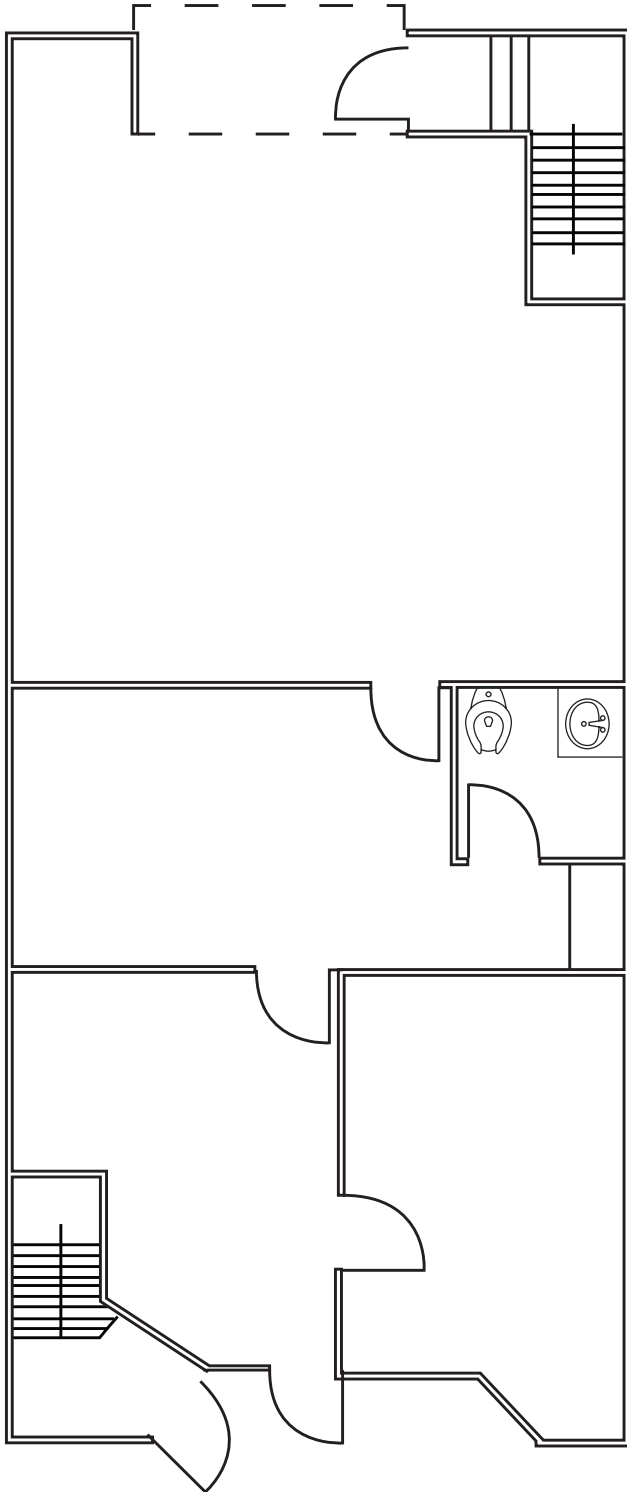
**DREW RAMIREZ**  
650.430.1433  
drew.ramirez@kidder.com  
LIC N° 02209477

**BRETT WEBER**  
650.771.3000  
brett.weber@kidder.com  
LIC N° 00901454

**STEVE DIVNEY**  
650.400.8065  
steve.divney@kidder.com  
LIC N° 01216239

This information supplied herein is from sources we deem reliable. It is provided without any representation, warranty, or guarantee, expressed or implied as to its accuracy. Prospective Buyer or Tenant should conduct an independent investigation and verification of all matters deemed to be material, including, but not limited to, statements of income and expenses. Consult your attorney, accountant, or other professional advisor.

## SUITE 90J



FLOOR PLAN NOT TO SCALE

---

*±1,560 SF*

AVAILABLE

---

*\$1.95 NNN*

LEASE RATE (SF/MO)

---

*\$0.46 PSF*

NETS

---

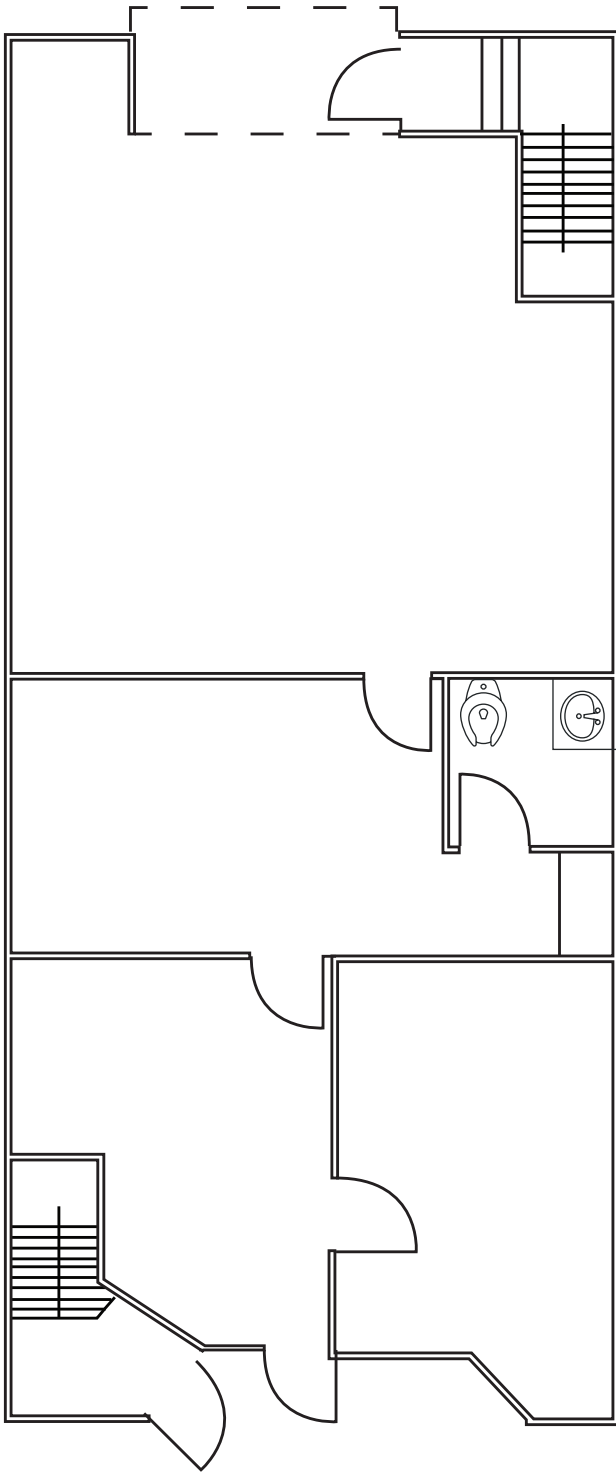
*NOW*

AVAILABLE

[KIDDER.COM](http://KIDDER.COM)

This information supplied herein is from sources we deem reliable. It is provided without any representation, warranty, or guarantee, expressed or implied as to its accuracy. Prospective Buyer or Tenant should conduct an independent investigation and verification of all matters deemed to be material, including, but not limited to, statements of income and expenses. Consult your attorney, accountant, or other professional advisor.

## SUITE 90N



FLOOR PLAN NOT TO SCALE

---

*±1,560 SF*

AVAILABLE

---

*\$1.95 NNN*

LEASE RATE (SF/MO)

---

*\$0.46 PSF*

NETS

---

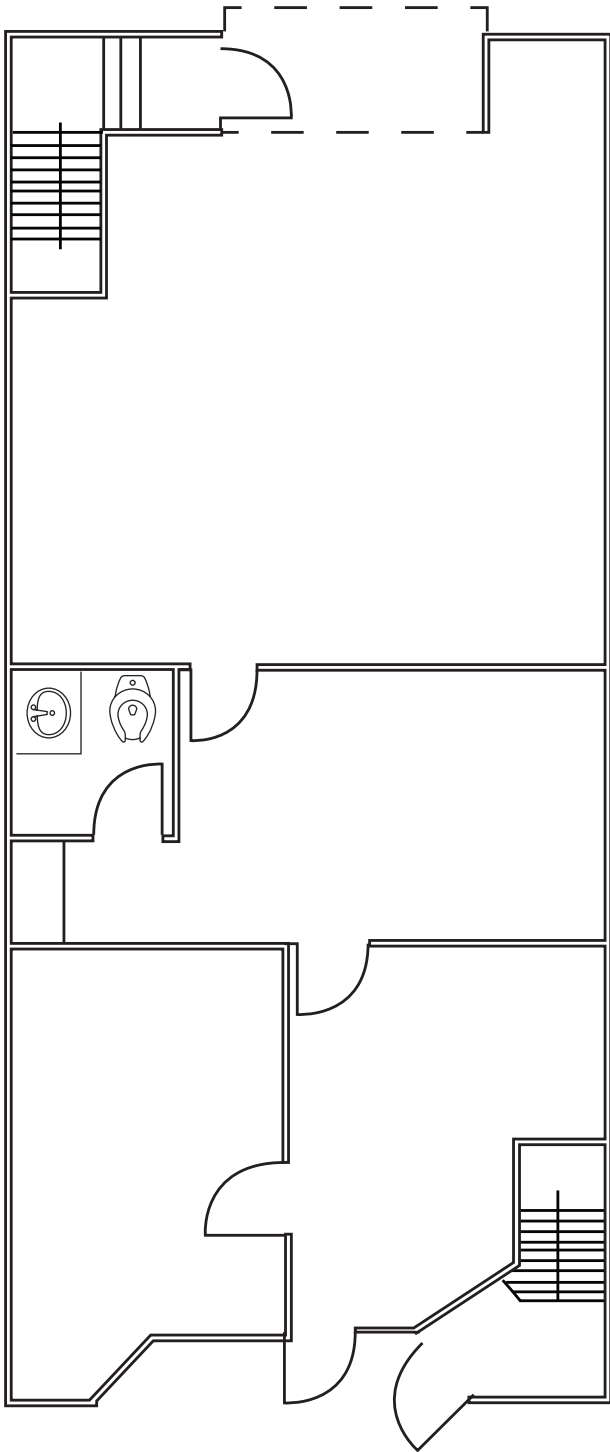
*NOW*

AVAILABLE

[KIDDER.COM](http://KIDDER.COM)

This information supplied herein is from sources we deem reliable. It is provided without any representation, warranty, or guarantee, expressed or implied as to its accuracy. Prospective Buyer or Tenant should conduct an independent investigation and verification of all matters deemed to be material, including, but not limited to, statements of income and expenses. Consult your attorney, accountant, or other professional advisor.

## SUITE 90U



FLOOR PLAN NOT TO SCALE

---

*±1,560 SF*

AVAILABLE

---

*\$1.95 NNN*

LEASE RATE (SF/MO)

---

*\$0.46 PSF*

NETS

---

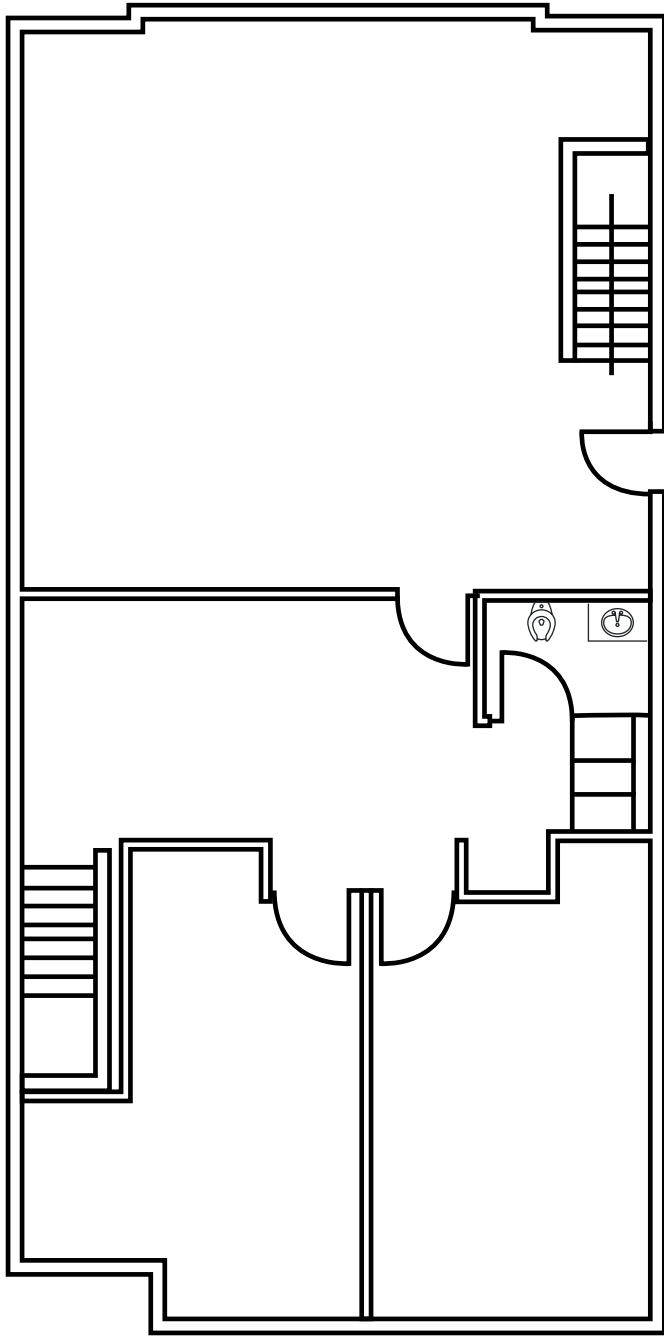
*NOW*

AVAILABLE

[KIDDER.COM](http://KIDDER.COM)

This information supplied herein is from sources we deem reliable. It is provided without any representation, warranty, or guarantee, expressed or implied as to its accuracy. Prospective Buyer or Tenant should conduct an independent investigation and verification of all matters deemed to be material, including, but not limited to, statements of income and expenses. Consult your attorney, accountant, or other professional advisor.

# SUITE 90G



FLOOR PLAN NOT TO SCALE

---

*±1,620 SF*

AVAILABLE

---

*\$1.55 MG*

LEASE RATE (SF/MO)

---

*NOW*

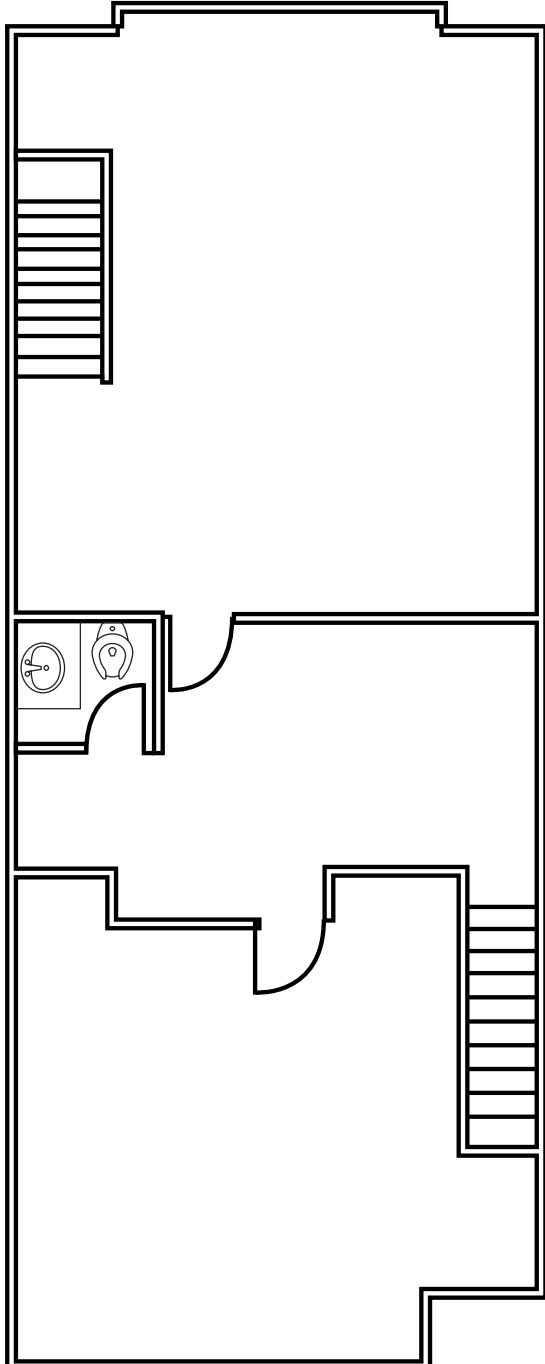
AVAILABLE

[KIDDER.COM](http://KIDDER.COM)

This information supplied herein is from sources we deem reliable. It is provided without any representation, warranty, or guarantee, expressed or implied as to its accuracy. Prospective Buyer or Tenant should conduct an independent investigation and verification of all matters deemed to be material, including, but not limited to, statements of income and expenses. Consult your attorney, accountant, or other professional advisor.



# SUITE 90L



---

*±1,620 SF*

AVAILABLE

---

*\$1.55 MG*

LEASE RATE (SF/MO)

---

*NOW*

AVAILABLE

FLOOR PLAN NOT TO SCALE

[KIDDER.COM](http://KIDDER.COM)

This information supplied herein is from sources we deem reliable. It is provided without any representation, warranty, or guarantee, expressed or implied as to its accuracy. Prospective Buyer or Tenant should conduct an independent investigation and verification of all matters deemed to be material, including, but not limited to, statements of income and expenses. Consult your attorney, accountant, or other professional advisor.

# SUITE 90C5

**±742 SF**

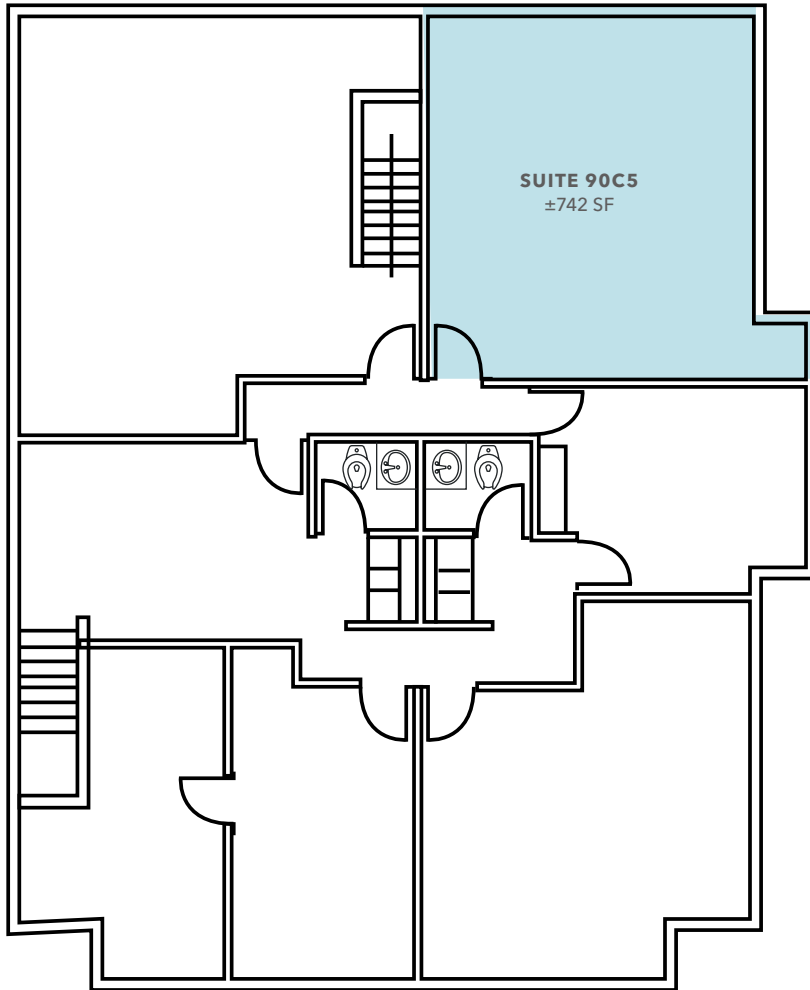
AVAILABLE

**\$1.75 MG**

LEASE RATE (SF/MO)

**NOW**

AVAILABLE



FLOOR PLAN NOT TO SCALE

**JOHN MCLELLAN**  
415.418.9880  
john.mclellan@kidder.com  
LIC N° 01869489

**DREW RAMIREZ**  
650.430.1433  
drew.ramirez@kidder.com  
LIC N° 02209477

**BRETT WEBER**  
650.771.3000  
brett.weber@kidder.com  
LIC N° 00901454

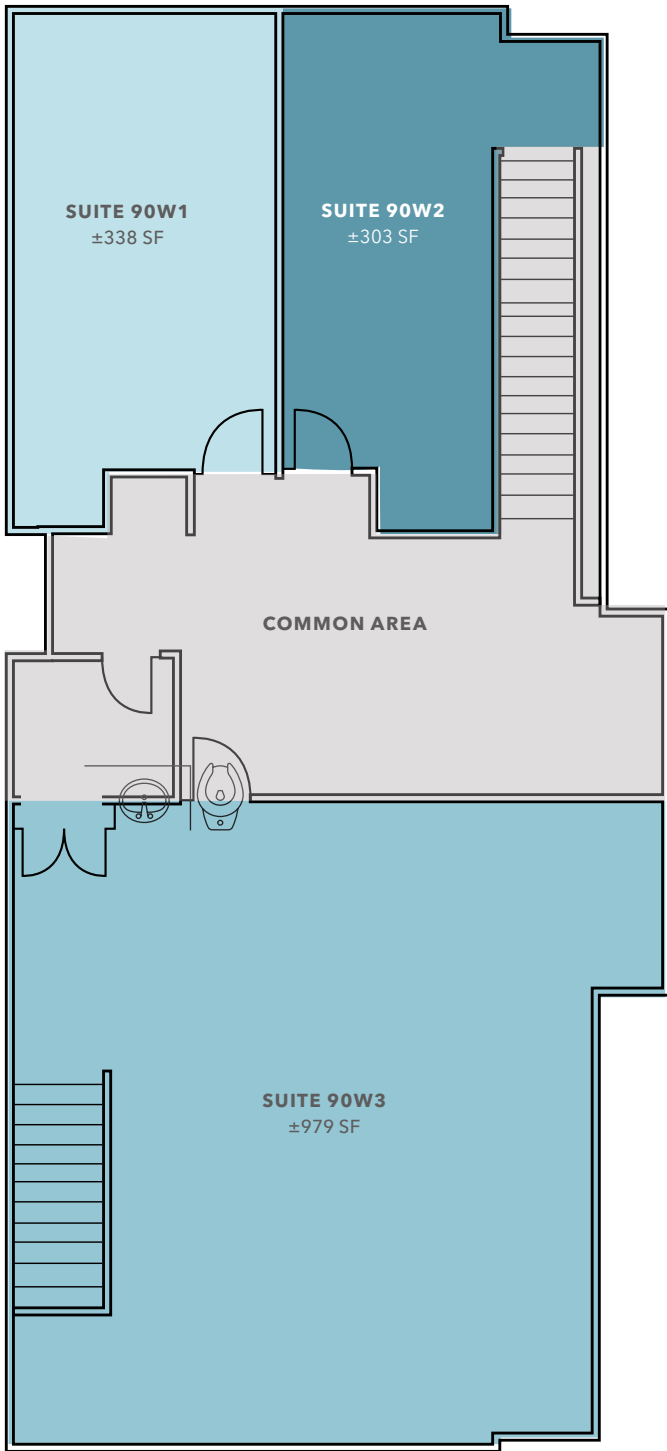
**STEVE DIVNEY**  
650.400.8065  
steve.divney@kidder.com  
LIC N° 01216239

**KIDDER.COM**

This information supplied herein is from sources we deem reliable. It is provided without any representation, warranty, or guarantee, expressed or implied as to its accuracy. Prospective Buyer or Tenant should conduct an independent investigation and verification of all matters deemed to be material, including, but not limited to, statements of income and expenses. Consult your attorney, accountant, or other professional advisor.



# SUITE 90W1-W3



*±338 SF*

SUITE 90W1

*±303 SF*

SUITE 90W2

*±978 SF*

SUITE 90W3

*\$1.95 MG*

LEASE RATE (SF/MO)

*NOW*

AVAILABLE

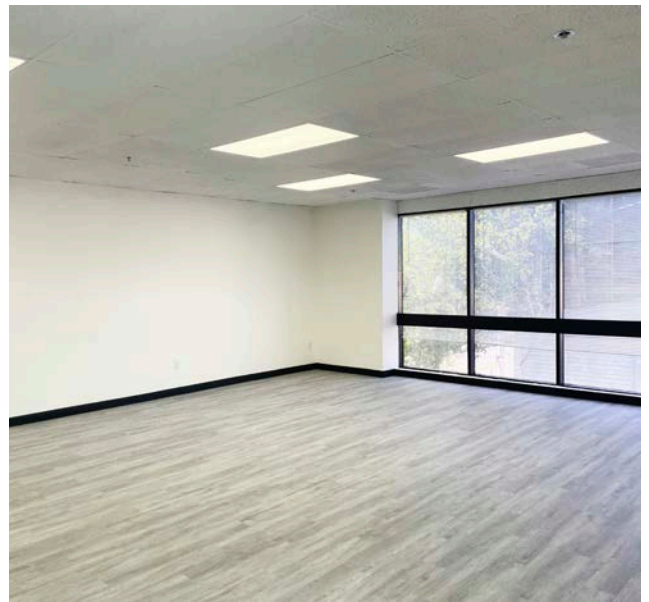
FLOOR PLAN NOT TO SCALE

[KIDDER.COM](http://KIDDER.COM)

This information supplied herein is from sources we deem reliable. It is provided without any representation, warranty, or guarantee, expressed or implied as to its accuracy. Prospective Buyer or Tenant should conduct an independent investigation and verification of all matters deemed to be material, including, but not limited to, statements of income and expenses. Consult your attorney, accountant, or other professional advisor.







[KIDDER.COM](http://KIDDER.COM)

This information supplied herein is from sources we deem reliable. It is provided without any representation, warranty, or guarantee, expressed or implied as to its accuracy. Prospective Buyer or Tenant should conduct an independent investigation and verification of all matters deemed to be material, including, but not limited to, statements of income and expenses. Consult your attorney, accountant, or other professional advisor.

