

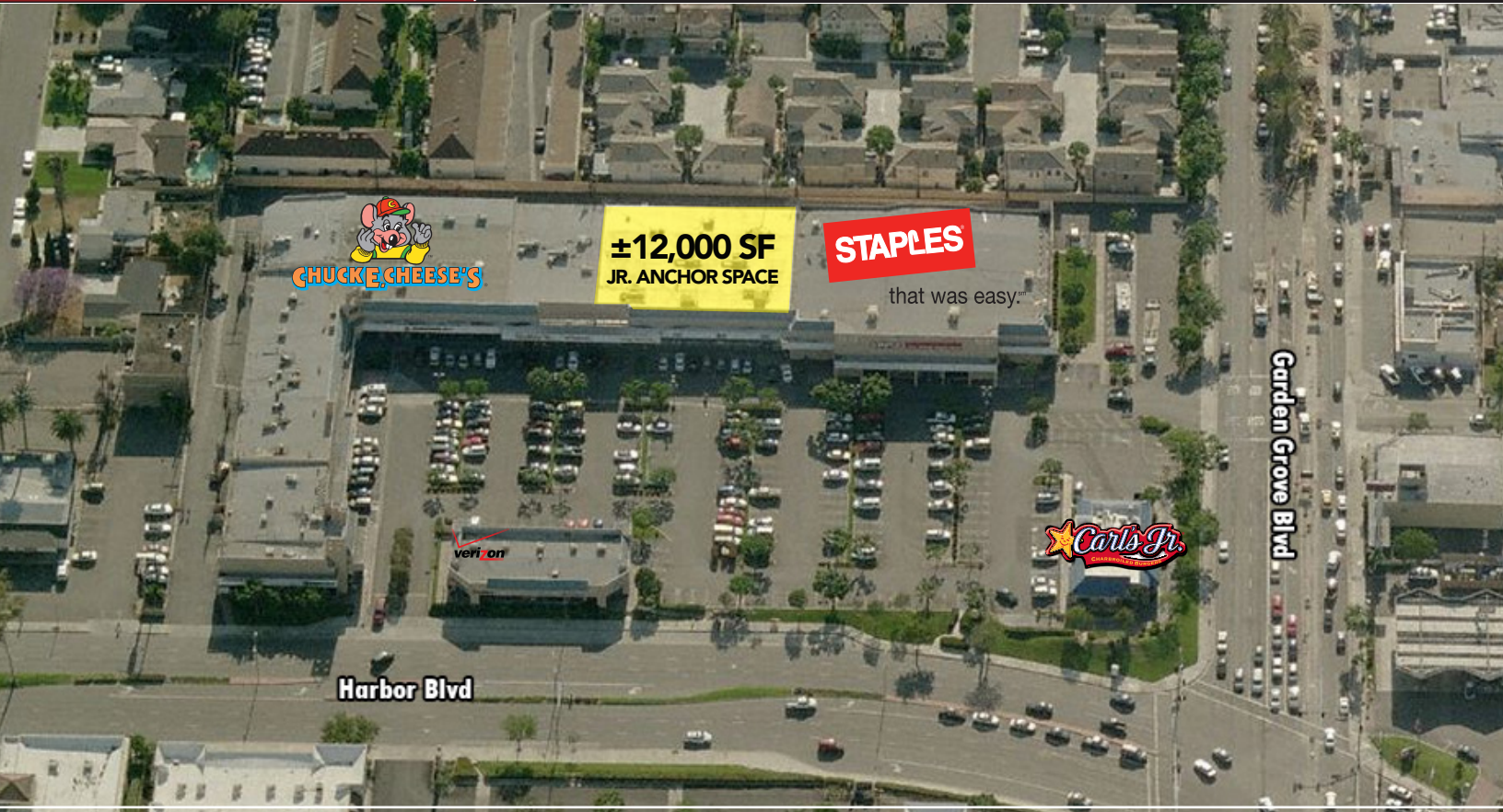
HARBOR PLAZA  
SHOPPING CENTER

SWC OF HARBOR BLVD.  
& GARDEN GROVE BLVD.

# HARBOR PLAZA

## ±12,000 SF JR. ANCHOR SPACE

## ±3,000 SF PAD BUILDING



### FEATURES:

- Asking Rent: \$1.75 - \$2.75 + NNN
- Major Intersection Exposure - Harbor Blvd & Garden Grove Blvd.
- Tenants:
  - CHUCK E. CHEESE'S**
  - STAPLES** that was easy.™
- Strong Demographics / Mixed Ethnic
- Site Plan on Reverse

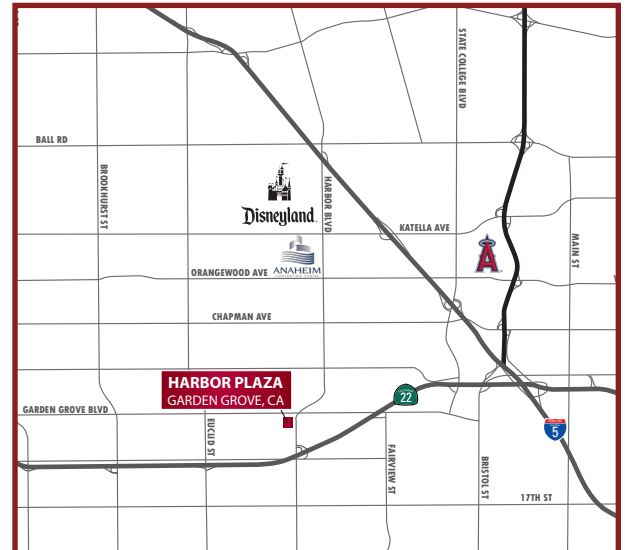
### TRAFFIC COUNT (2023 Est.)

Harbor Blvd.: 41,000 Cars/Day

Harbor Blvd.: 25,000 Cars/Day

### DEMOGRAPHICS

	<u>Population</u>	<u>Median HH Income</u>
1 Mile	31,458	\$62,938
3 Miles	320,667	\$59,430
5 Miles	837,990	\$59,157



Exclusively Represented By:

**Ken Gould**

Senior Vice President/Principal

p: (949) 724-4728

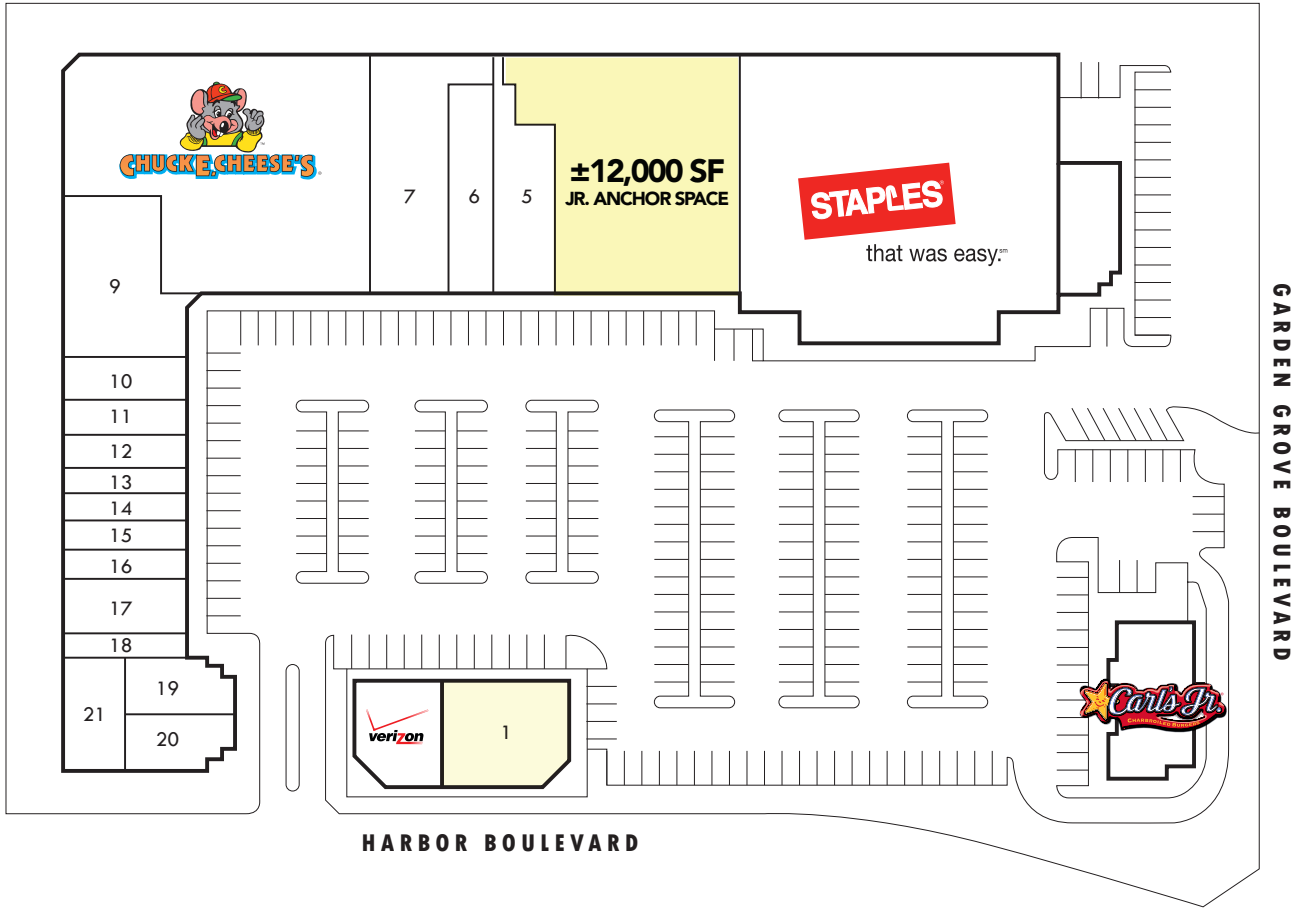
e-mail: kgould@lee-associates.com

DRE # 00875719

# HARBOR PLAZA

## ±12,000 SF JR. ANCHOR SPACE

## ±3,000 SF PAD BUILDING



1: AVAILABLE - ±3,000 SF (13091 Harbor Blvd.)	8: Chuck E. Cheese	15: Beauty Salon
2: Verizon Wireless	9: Ten and Less	16: N Tailor / Alterations
3: Staples	10: Nail Salon	17: Promax Staffing
4: Available - ±12,000 SF (13061 Harbor Blvd.)	11: Sabroso Mexican Grill - Take Out	18: Comfort Dental
5: OC Sewing & Vacuum	12: Eyebrow Threading	19: Sabroso Mexican Grill
6: VN Drugs	13: Travel/Tax Office	20: Ave Check Cashed
7: Que Candy	14: Water Store	21: Comfort Dental

**Exclusively Represented By:**

**Ken Gould**

Senior Vice President/Principal

p: (949) 724-4728

e-mail: [kgould@lee-associates.com](mailto:kgould@lee-associates.com)

DRE # 0875719