

# 9400 PLACE

9340 - 9400 SW Beaverton Hillsdale Hwy | Beaverton, OR 97005

## FOR LEASE



### OFFICE SPACE AVAILABLE FOR LEASE

**BUILDING 9400** - \$20 PSF, FS

#### SECOND FLOOR

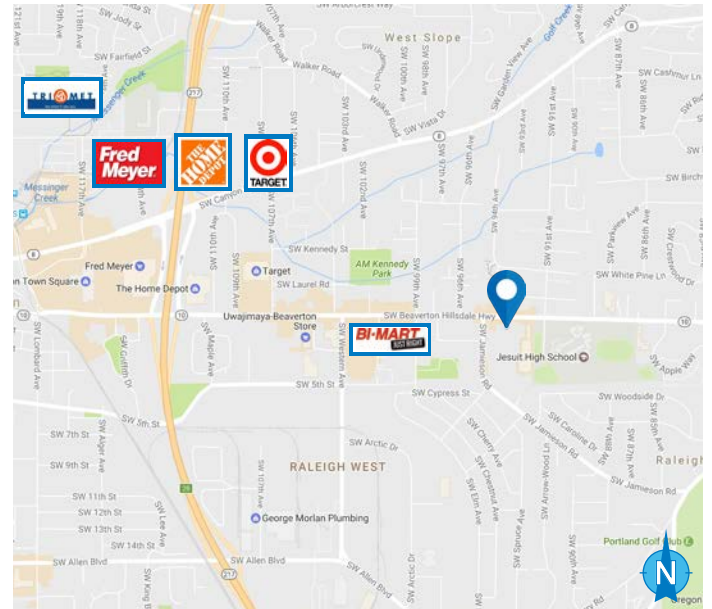
- Suite 225: ± 742 SF

#### THIRD FLOOR

- Full floor available! - 35,067 RSF - (Can be demised)
- Suite 300: ± 15,680 RSF
- Suite 330: ± 3,102 RSF
- Suite 340: ± 581 RSF
- Suite 360: ± 7,906 RSF
- Suite 380: ± 7,798 RSF

### FEATURES

- Bright, natural light with offices along window line
- Courtyard setting; elevator served
- Professionally managed
- Ample parking with 3.5/1000 ratio
- Along SW Beaverton Hillsdale Highway
- Adjacent to Jesuit High School
- Walk to amenities; close to Beaverton Town Square
- Easy access to 217
- Safe, secure building with 24/7 tenant access
- Washington County taxes



09.28.2023

For more information or a property tour, please contact:

**DUANE LINK**

503.225.8465

Duanel@norris-stevens.com



*Information contained herein has been obtained from others and considered to be reliable; however, a prospective purchaser or lessee is expected to verify all information to their own satisfaction.*

## Norris & Stevens

INVESTMENT REAL ESTATE SERVICES

900 SW 5th Avenue • 17th Floor • Portland, OR 97204  
503.223.3171 • norris-stevens.com

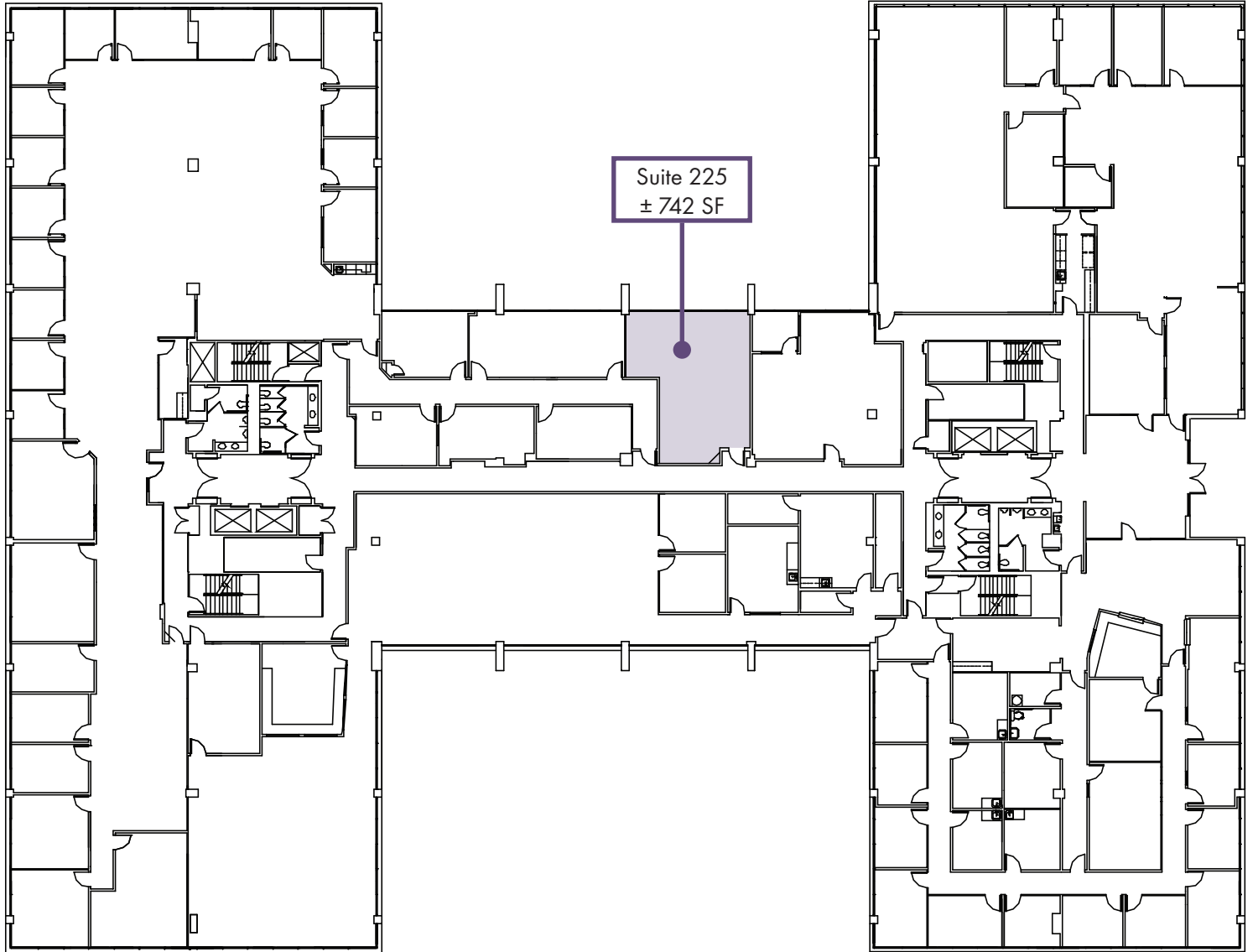
# 9400 PLACE

9340 - 9400 SW Beaverton Hillsdale Hwy | Beaverton, OR 97005

## FOR LEASE

### FLOOR PLANS

### BUILDING 9400 SECOND FLOOR



For more information or a property tour, please contact:

**DUANE LINK**

503.225.8465

Duanel@norris-stevens.com

## Norris & Stevens

INVESTMENT REAL ESTATE SERVICES



*Information contained herein has been obtained from others and considered to be reliable; however, a prospective purchaser or lessee is expected to verify all information to their own satisfaction.*

900 SW 5th Avenue • 17th Floor • Portland, OR 97204  
503.223.3171 • norris-stevens.com

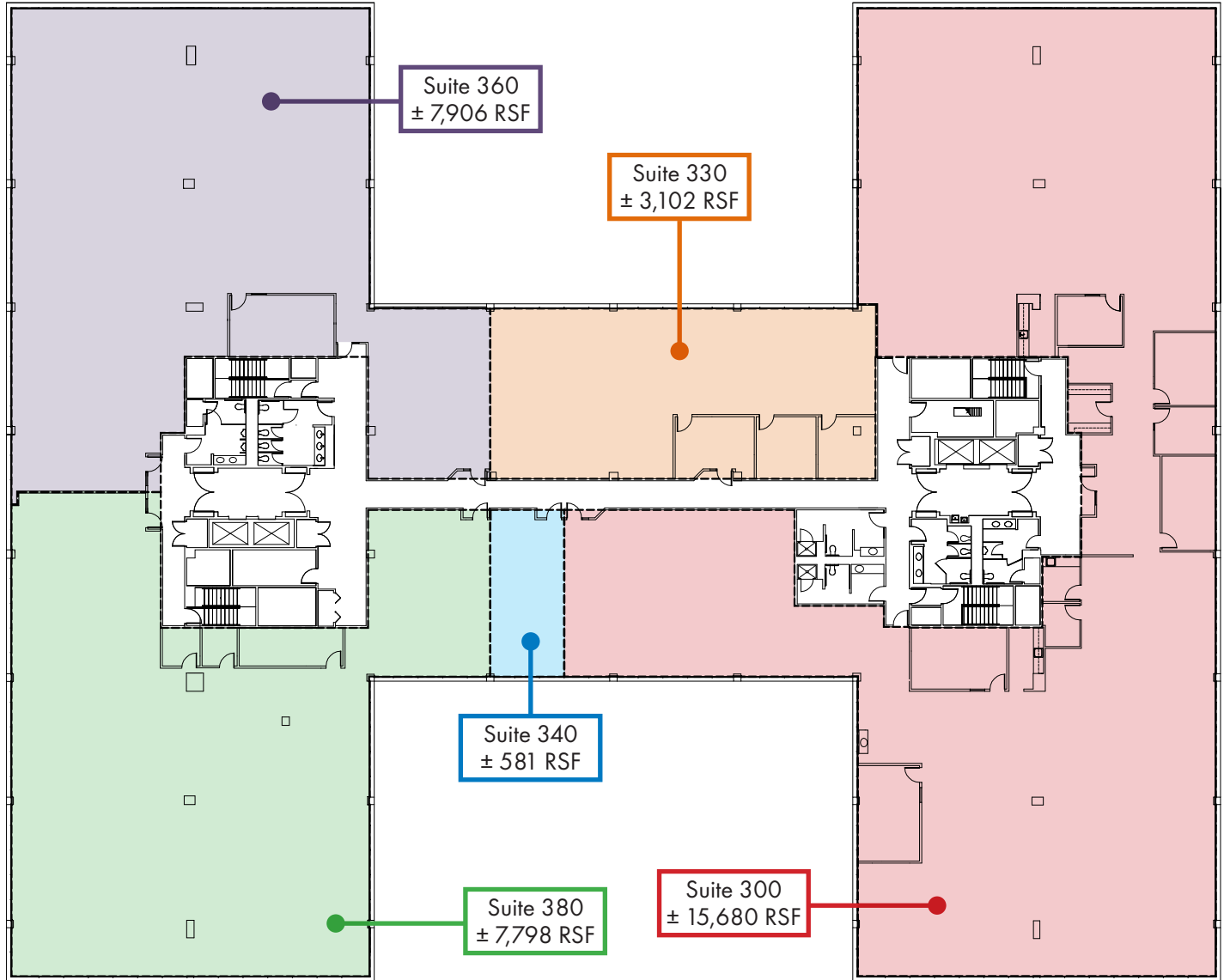
# 9400 PLACE

9340 - 9400 SW Beaverton Hillsdale Hwy | Beaverton, OR 97005

## FOR LEASE

### FLOOR PLANS

### BUILDING 9400 THIRD FLOOR



For more information or a property tour, please contact:

**DUANE LINK**

503.225.8465

Duanel@norris-stevens.com

## Norris & Stevens

INVESTMENT REAL ESTATE SERVICES



*Information contained herein has been obtained from others and considered to be reliable; however, a prospective purchaser or lessee is expected to verify all information to their own satisfaction.*

900 SW 5th Avenue • 17th Floor • Portland, OR 97204  
503.223.3171 • norris-stevens.com