



**SterlingCRE**  
ADVISORS

## Historic Downtown Space for Lease

111 North Higgins Avenue  
Missoula, Montana  
Office Spaces & Ballroom for Lease

Exclusively listed by:  
**Connor McMahon**  
Connor@SterlingCREadvisors.com  
406.370.6424



# Opportunity Overview

Bright, light-filled office space is now available in the iconic Florence Building, located in the heart of downtown Missoula, Montana. Positioned just steps from restaurants, retail shops, government offices, and professional services, this landmark property offers a truly exceptional downtown location.

Leasable options include private offices, open workspaces, dedicated meeting rooms, and even large-format suites suitable for a variety of business needs. Some offices are generously sized and can accommodate shared workspaces or team environments.

Tenants enjoy convenient elevator access, well-maintained Art Deco architecture, and use of a striking historic lobby. The Florence Building is home to a dynamic mix of tenants, including tech companies, boutique retailers, and professional firms.

A Tenant Improvement (TI) allowance is available for qualified tenants. Floor plans are flexible and can be tailored to fit individual business operations. The surrounding area is highly walkable and bike-friendly, with continuous infrastructure improvements enhancing accessibility.

**Suite availability:**

- Multiple configurations available for businesses of various sizes
- Demising options possible to accommodate multiple tenants
- Limited small office spaces available—[please inquire for current availability](#)



Address	111 North Higgins Avenue Missoula, Montana
Property Type	Office
Lease Rate	Varies

# Interactive Links

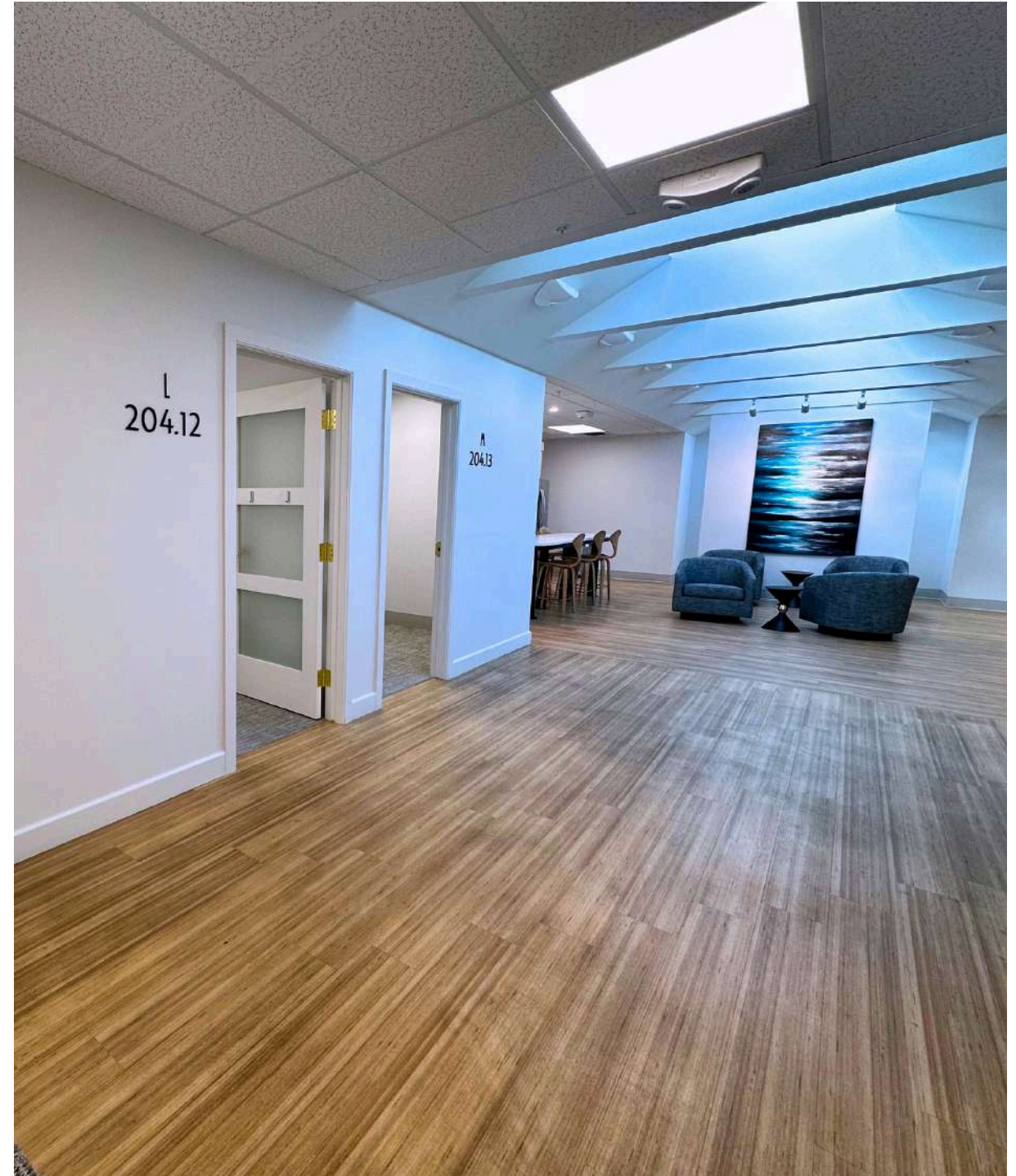


[Link to Listing](#)



[Street View](#)

Note: If there are issues with video launch, you may need to update your PDF software or use the links above



Interactive Links



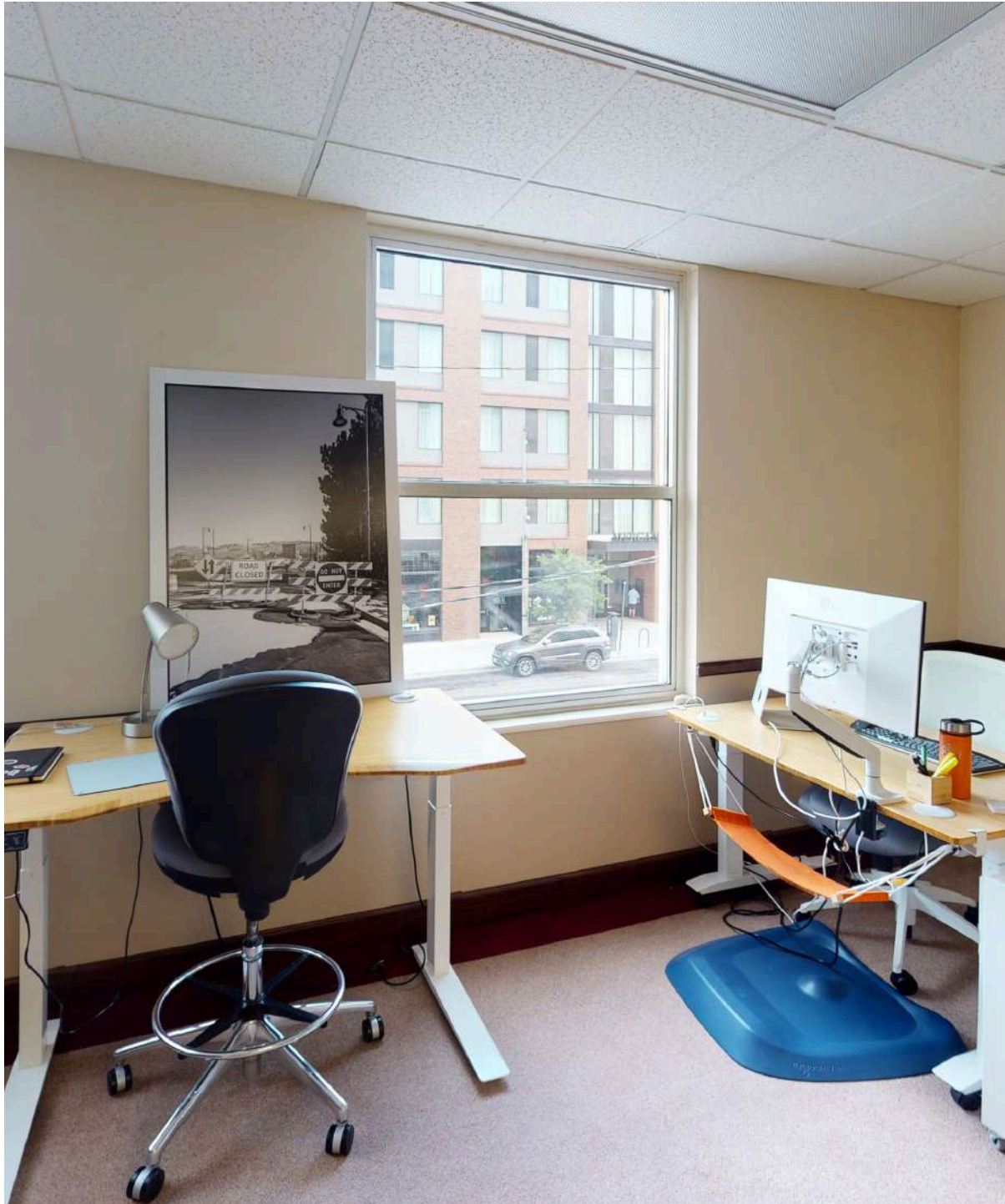
# Property Details

Address	111 North Higgins Avenue Missoula, Montana
Property Type	Office
Services	City Water & Sewer
Access	Entrance on North Higgins Avenue
Zoning	CBD-4
Parking	Nearby surface lots & parking decks
Accessibility	Elevator



# Available Spaces

<b>Boardroom (2<sup>nd</sup> Floor)</b>	±1,073 SF; \$2,500/Month (Gross)
<b>Exterior Office (4<sup>th</sup> Floor)</b>	±173 SF; \$650/Month (Gross)
<b>Interior Office (2<sup>nd</sup> Floor)</b>	±89 SF; \$475/Month (Gross)
<b>Bitterroot Ballroom (Below Grade)</b>	±3,000-6,000 SF



**Walkable to restaurants, bars, breweries, shops and hotels**



**Easy walk to multiple public parking facilities**



**Tenant Improvement allowance is available for qualified tenants**



**Tenants have access to the building's beautiful historic art deco lobby**



**Elevator access**



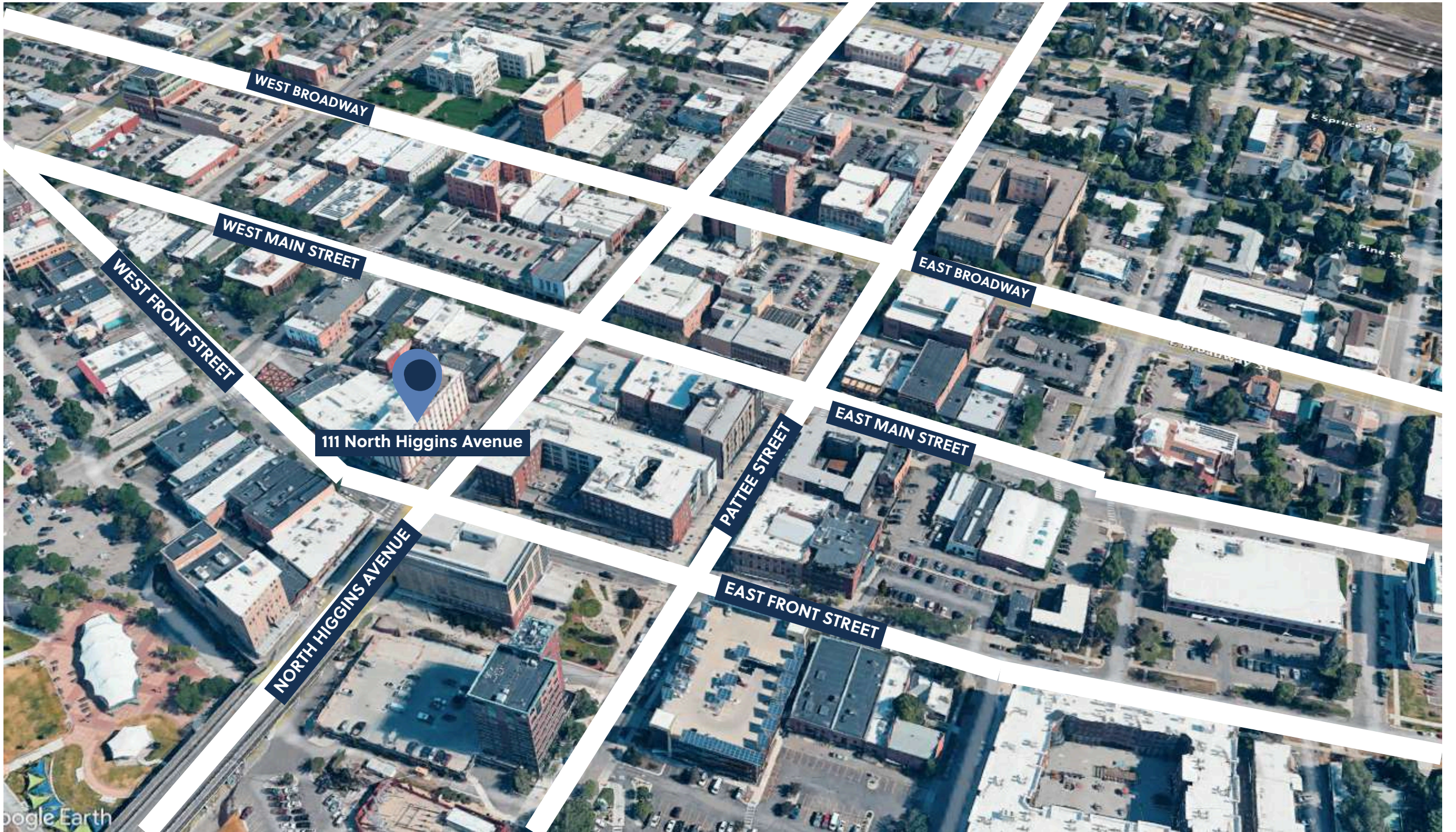






Ballroom/Basement





111 North Higgins Avenue





### 100 Block West Front Retail



### 100 Block West Main Retail



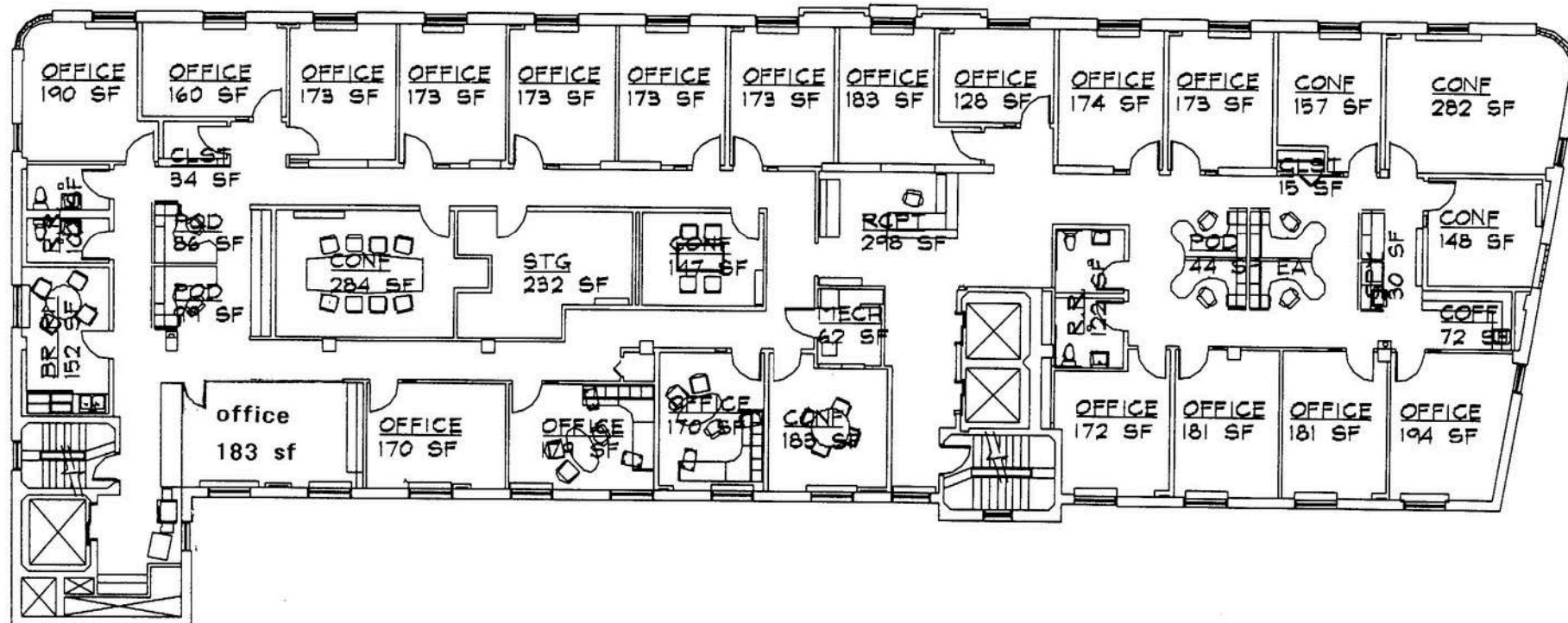
### 100 Block North Higgins Retail











4th floor



# Missoula Air Service

Missoula International Airport offers **direct flights** to major cities on the west coast and midwest.





# Missoula Access

Missoula offers strategic proximity to major cities in the Pacific Northwest, Midwest, and Canada.

Missoula is within a day's truck drive of cities across the Northwest, including major Canadian metros. Easy access to Interstate 90 and US Highway 93 means Montana's major cities including Billings, Bozeman, Butte, Helena, Great Falls, Kalispell and Missoula are within a half day's drive.

Access to rail and the Missoula International Airport round out the city's access to a multimodal transportation network.



Access Across the Northwest



# Top Employers

## University of Montana

3,000+ employees

## Missoula County Public Schools

3,000+ employees

## St. Patrick Hospital

1000+ employees

## Montana Rail Link

1,000+r employees

## Community Medical Center

1000+ employees

## Missoula County

500+ employees

## City of Missoula

500+ employees

## Allegiance Benefits

500+ employees

# Noteworthy

Submittable



workiva



Pathlabs



Cognizant

PatientOne



Source: Montana Department of Labor & Industry | [lmi.mt.gov](http://lmi.mt.gov) & Zippia | [zippia.com](http://zippia.com)





# ACCOLADES

## **#1 Most Fun City for Young People**

Smart Assets

## **#2 Best Places to Live in the American West**

Sunset Magazine

## **Top 10 Medium Cities for the Arts**

2023 Southern Methodist University

## **#4 Best Small Cities in America to Start a Business**

Verizon Wireless

## **#10 Best Small Metros to Launch a Business**

CNN Money

## **#6 Best Cities for Fishing**

Rent.com

## **#1 City for Yoga**

Apartment Guide

## **Top 10 Cities for Beer Drinkers**

2015, 2016, 2017, 2019, 2022

## **International Public Library of 2022**

The International Federation of Library Associations World Congress

# PEOPLE

## **12.5% Population Growth - 2012-2022**

Missoula ranks among highest net migration cities in US

## **Median Age 34 Years Old**

The median age in the US is 39

## **58.8% Degreed**

Associates degree or higher, 18.7% have a graduate level degree

## **24.7% High Income Households**

Incomes over \$100,000 a year

## **53.4% Renters**

## **Top 5 Occupations**

Office & Admin Support, Food Service, Sales, Transportation



# ACCESS

## **16 Minutes**

Average Commute Time

## **15.6% Multimodal Commuters**

Walk or bike to work

## **81 Hours Saved**

81 hours saved in commute yearly over national average

## **14 Non-Stop Air Destinations**

With a recently upgraded terminal at the Missoula International Airport

## **62 Miles**

Of bike lanes with a Gold rating from the League of American Bicyclists

## **12 Routes**

Provided by a bus network across the City of Missoula

## **11 EV Charge Stations**

Available to the public across Missoula

# ECONOMY

## **Designated as a Tech Hub**

Western Montana was one of 30 applicants out of 200 designated as a Tech Hub by the federal government and now eligible for millions of dollars in funding for research in smart, autonomous and remote sensing technologies.

## **Diversity Among Top Employers**

University of Montana (education), Providence Health Services/St. Patrick's Hospital (medical), Community Medical Center (medical), Montana Rail Link (transportation), Neptune Aviation (aviation services)

## **High Labor Participation**

Missoula consistently offers one of the highest labor force participation rates in the country.

## **Expanding Industries**

Missoula has seen major growth in construction, professional, scientific, and manufacturing businesses over the past decade.

## **Growing Number of Technology Companies**

Cognizant, onX, Submittable, and Lumenad are some leading tech firms in Missoula





# Brokerage Advisors



**CONNOR MCMAHON**  
Commercial Real Estate Advisor

Connor McMahon, from his days as a commercial fishing deck boss to earning accolades like Power Broker of the Year and CREXI Platinum Broker, always goes all in. Moving from property management to the retail side of commercial real estate, he's handled over \$135 million in transactions, proving his thorough grasp of this complex sector.



**JOE TREDIK**  
Leasing Specialist

Joe brings a personal understanding of the local market, its trends, and its unique opportunities to the Sterling Team. He leverages his accounting background and leasing experience to provide clients with detailed financial analysis and strategic insights that enable clients to make well informed leasing decisions.



**SIERRA PIERCE**  
Transaction Coordinator

Sierra has a sharp eye for detail with a background in client service and project coordination. With experience in marketing, small business ownership, and healthcare administration, Sierra has spent her career managing logistics, building strong relationships, and ensuring no task falls through the cracks.



# Disclaimer

CONFIDENTIALITY & DISCLAIMER All materials and information received or derived from SterlingCRE Advisors its directors, officers, agents, advisors, affiliates, and/or any third party sources are provided without representation or warranty as to completeness, veracity, or accuracy, condition of the property, compliance or lack of compliance with applicable governmental requirements, developability or suitability, the financial performance of the property, the projected financial performance of the property for any party's intended use or any and all other matters. Neither SterlingCRE Advisors its directors, officers, agents, advisors, or affiliates makes any representation or warranty, express or implied, as to accuracy or completeness of any materials or information provided, derived, or received. Materials and information from any source, whether written or verbal, that may be furnished for review are not a substitute for a party's active conduct of its own due diligence to determine these and other matters of significance to such party. SterlingCRE Advisors will not investigate or verify any such matters or conduct due diligence for a party unless otherwise agreed in writing. EACH PARTY SHALL CONDUCT ITS OWN INDEPENDENT INVESTIGATION AND DUE DILIGENCE. Any party contemplating or under contract or in escrow for a transaction is urged to verify all information and to conduct their own inspections and investigations including through appropriate third-party independent professionals selected by such party. All financial data should be verified by the party including by obtaining and reading applicable documents and reports and consulting appropriate independent professionals. SterlingCRE Advisors makes no warranties and/or representations regarding the veracity, completeness, or relevance of any financial data or assumptions. SterlingCRE Advisors does not serve as a financial advisor to any party regarding any proposed transaction. All data and assumptions regarding financial performance, including that used for financial modeling purposes, may differ from actual data or performance. Any estimates of market rents and/or projected rents that may be provided to a party do not necessarily mean that rents can be established at or increased to that level. Parties must evaluate any applicable contractual and governmental limitations as well as market conditions, vacancy factors, and other issues in order to determine rents from or for the property. Legal questions should be discussed by the party with an attorney. Tax questions should be discussed by the party with a certified public accountant or tax attorney. Title questions should be discussed by the party with a title officer or attorney. Questions regarding the condition of the property and whether the property complies with applicable governmental requirements should be discussed by the party with appropriate engineers, architects, contractors, other consultants, and governmental agencies. All properties and services are marketed by SterlingCRE Advisors in compliance with all applicable fair housing and equal opportunity laws.