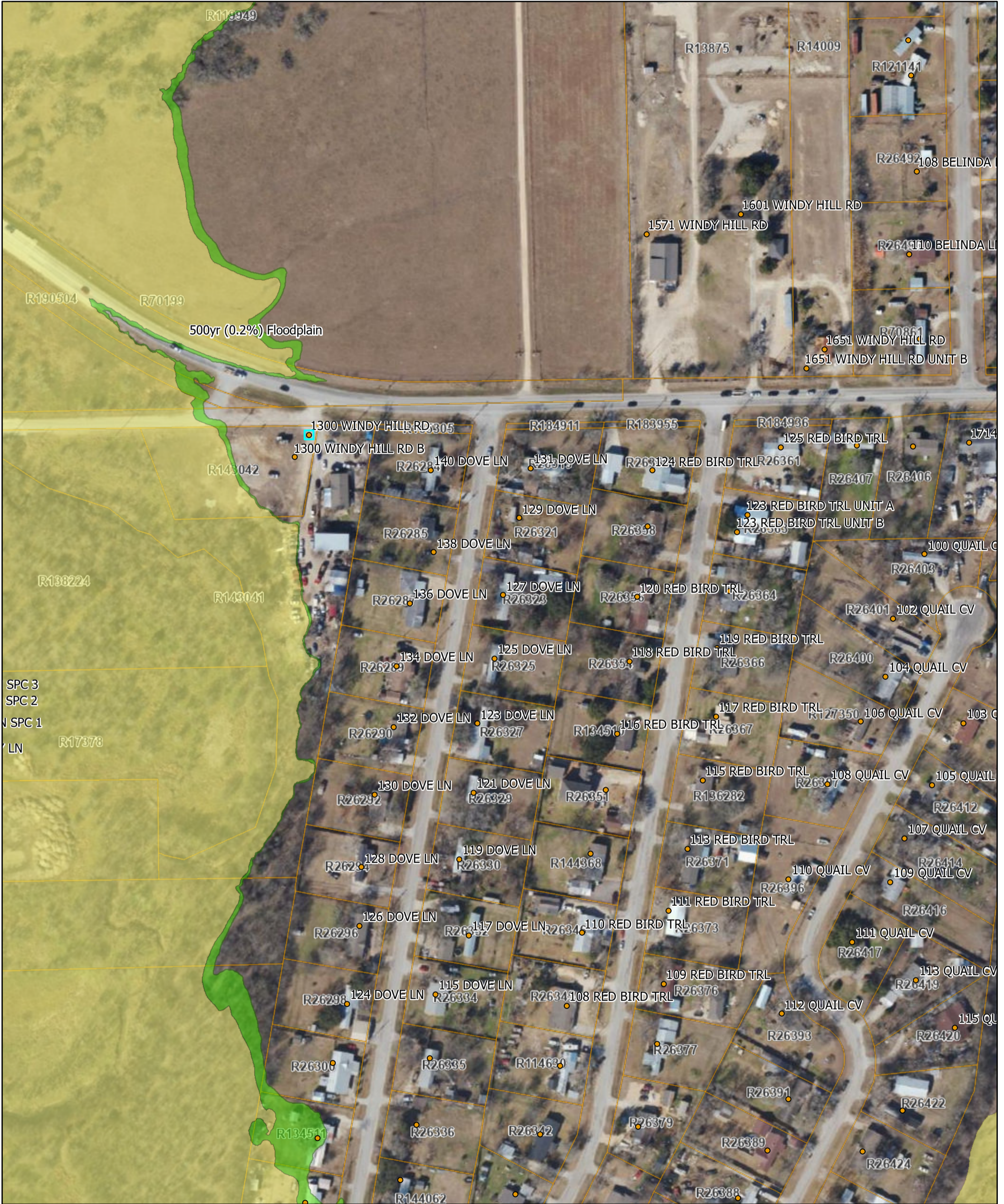


Hays County Development Services

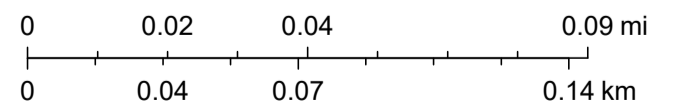


8/21/2023, 2:37:00 PM

Best Available Floodplain

- 100Yr (1%) Floodplain
- 500yr (0.2%) Floodplain
- HaysCoParcels

1:2,257



Sources: Esri, Airbus DS, USGS, NGA, NASA, CGIAR, N Robinson, NCEAS, NLS, OS, NMA, Geodatastyrelsen, Rijkswaterstaat, GSA, Geoland, FEMA, Intermap and the GIS user community, Esri Community Maps Contributors, Austin Community College, City of Austin, Texas Parks & Wildlife, © OpenStreetMap, Microsoft,