

# DURANGO TRAILS OFFICE PARK

5235 S. Durango Drive, Suite 104, Las Vegas, NV 89113

AVAILABLE  
For Lease



5960 South Jones Boulevard  
Las Vegas, Nevada 89118  
T 702.388.1800  
F 702.388.1010  
[www.mdlgroup.com](http://www.mdlgroup.com)

**Michael Greene, CCIM**  
Vice President  
Lic#: S.0186326  
702.388.1800  
[mgreene@mdlgroup.com](mailto:mgreene@mdlgroup.com)

**Luke Ramous**  
Senior Advisor  
Lic#: S.0188531  
702.388.1800  
[lramous@mdlgroup.com](mailto:lramous@mdlgroup.com)

**Hayim Mizrachi, SIOR, CCIM**  
CEO | Principal | Broker  
Lic#: B.0143643.CORP | PM.0167653.BKR  
702.388.1800  
[hmizrachi@mdlgroup.com](mailto:hmizrachi@mdlgroup.com)





## Lease Details



**\$2.25 PSF NNN**

Sublease Rate



**±1,075 SF**

Available Space



**Southwest**

Submarket

## Property Highlights

- ±1,075 SF office suite available situated on a ±0.09 AC lot
- Ideal for professional or medical practices
- Includes two (2) private offices, reception area, open office space, kitchenette, and a restroom
- Suite offers lots of natural light & high ceilings
- Ample parking
- Located in the Durango Trails Office Park
- Zoned for Commercial Professional (C-P)

## Demographics

Population	1 mile	3 miles	5 miles
2025 Population	±19,849	±183,376	±528,264
Average Household Income	1 mile	3 miles	5 miles
2025 Average Household Income	\$60,921	\$65,683	\$67,302



## Property Overview

MDL Group is pleased to present Suite 104 at 5235 S Durango Dr (the "Property") for lease, a  $\pm 1,075$  SF single-tenant office located in Durango Trails. Located in a well-maintained building with easy access to major thoroughfares, this suite offers a flexible layout ideal for a variety of office uses. Enjoy a prime Southwest Las Vegas location surrounded by amenities and services.

## Property Details

+ Parcel Number:	163-29-616-037, 163-29-616-039
+ Submarket:	Southwest
+ Building:	5235 (Ste. 104)
+ Zoning:	Commercial Professional (C-P)
+ Building Size:	$\pm 3,763$ SF
+ Lot Size:	$\pm 0.09$ Acres
+ Year Built:	2005
+ Available Signage:	Multi-Tenant Monument
+ Traffic Counts	Durango Drive $\pm 29,300$ VPD
	Tropicana Avenue $\pm 33,000$ VPD

## Area Overview

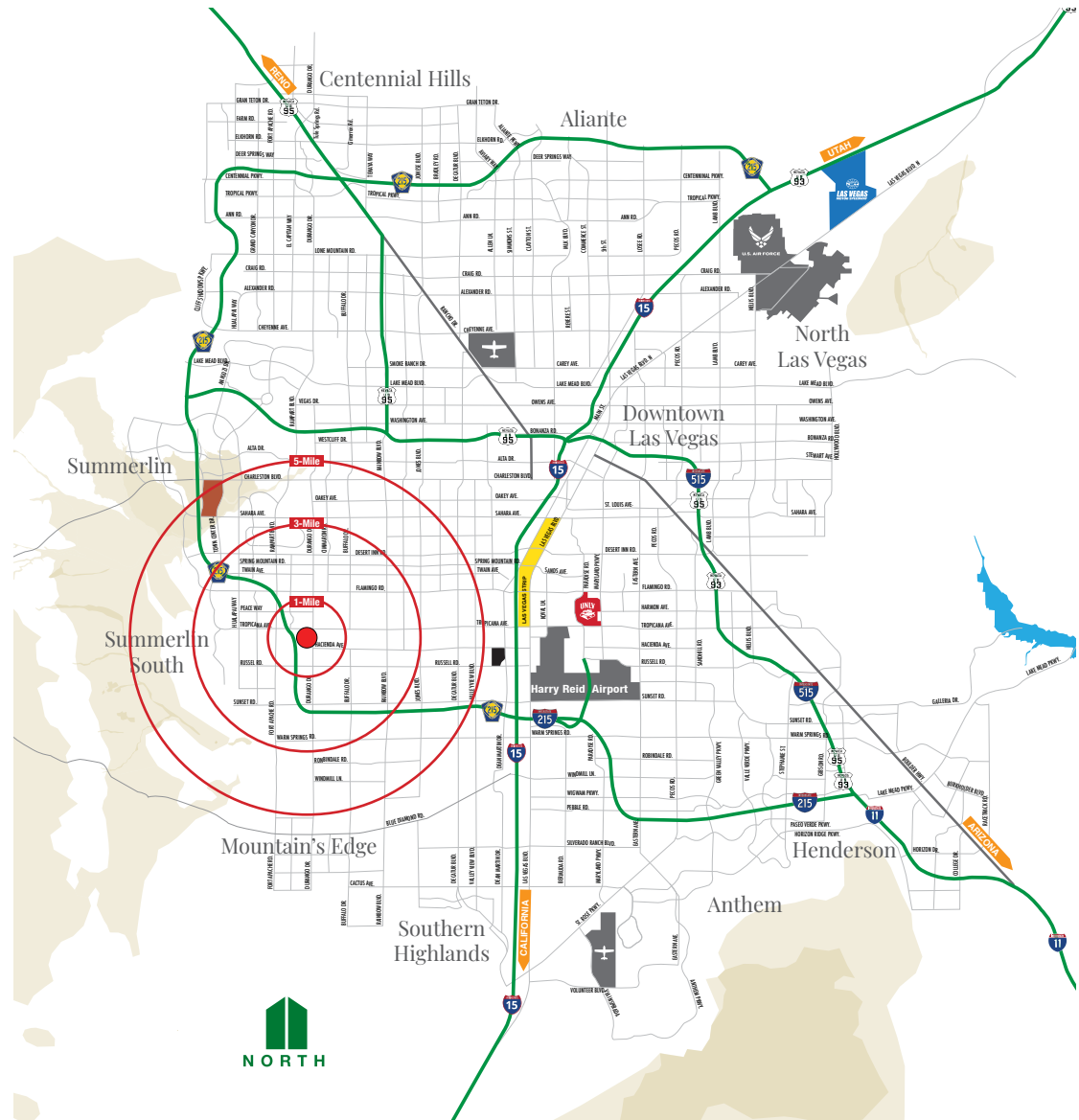
The property sits along the well-traveled Durango Drive corridor just south of Tropicana Avenue, positioned across from the upscale Spanish Trail residential community and minutes from major 215 Beltway interchanges, providing excellent access throughout the west Las Vegas Valley. The surrounding area is a vibrant mix of established medical and professional services, with convenient transit options and proximity to multiple commuter routes.

Population	1 mile	3 miles	5 miles
2010 Population	10,242	138,173	301,153
2020 Population	15,125	167,857	360,423
<b>2025 Population</b>	<b>16,371</b>	<b>178,775</b>	<b>380,657</b>
2030 Population	17,193	188,527	399,459
2010-2020 Annual Rate	3.98%	1.97%	1.81%
2020-2025 Annual Rate	1.52%	1.21%	1.05%
2025-2030 Annual Rate	0.98%	1.07%	0.97%
2025 Median Age	40.6	39.9	40.1

Households	1 mile	3 miles	5 miles
2025 Wealth Index	103	86	90
2010 Households	4,309	54,898	121,280
2020 Households	6,268	66,949	143,827
<b>2025 Total Households</b>	<b>6,784</b>	<b>72,026</b>	<b>153,288</b>
2030 Total Households	7,170	76,704	161,982
2010-2020 Annual Rate	3.82%	2.00%	1.72%
2020-2025 Annual Rate	1.52%	1.40%	1.22%
2025-2030 Annual Rate	1.11%	1.27%	1.11%

Average Household Income	1 mile	3 miles	5 miles
<b>2025 Average Household Income</b>	<b>\$125,378</b>	<b>\$112,504</b>	<b>\$115,706</b>
2030 Average Household Income	\$139,534	\$125,682	\$129,897
2025-2030 Annual Rate	2.16%	2.24%	2.34%

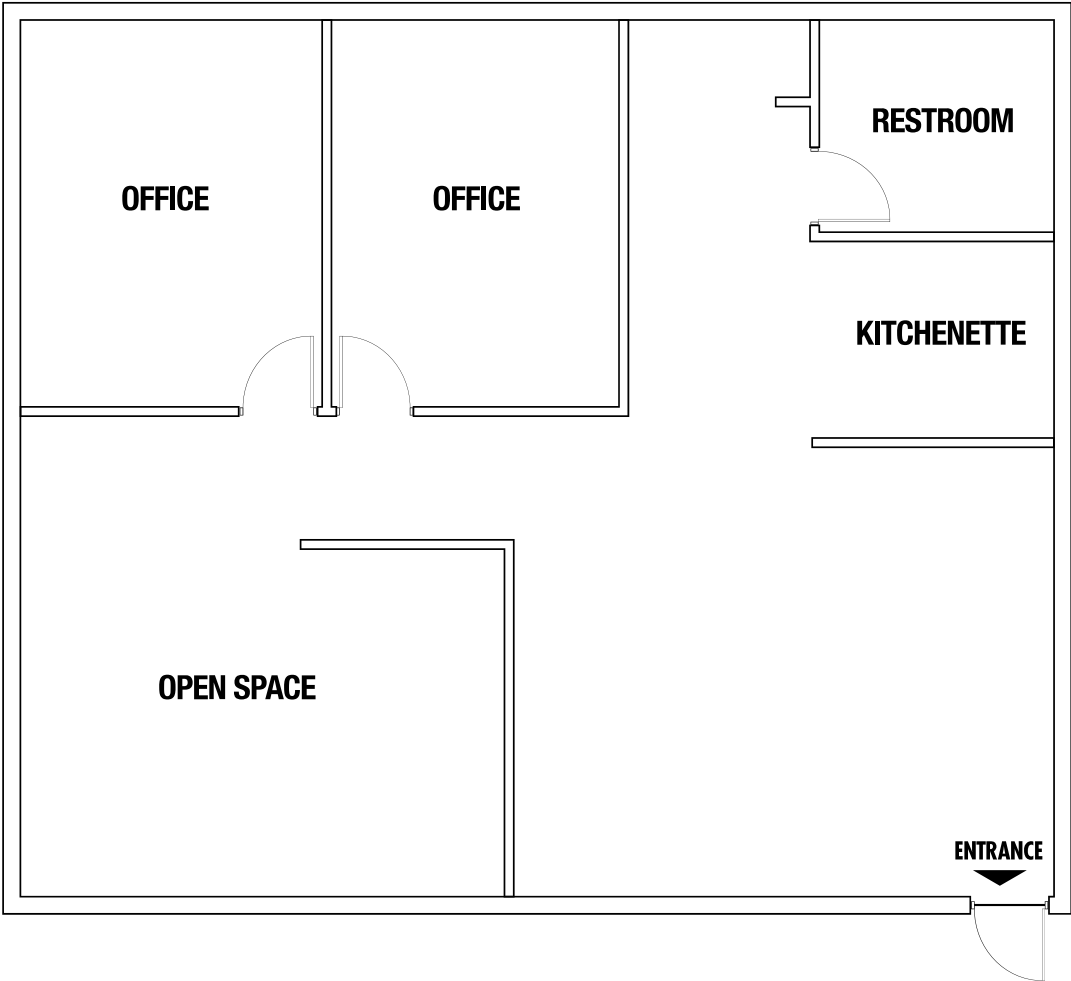
Housing	1 mile	3 miles	5 miles
2010 Total Housing Units	5,059	62,757	140,747
2020 Total Housing Units	6,802	71,690	154,751
<b>2025 Total Housing Units</b>	<b>7,256</b>	<b>76,579</b>	<b>163,789</b>
2025 Owner Occupied Housing Units	3,670	38,351	80,914
2025 Renter Occupied Housing Units	3,114	33,675	72,374
2025 Vacant Housing Units	472	4,553	10,501
2030 Total Housing Units	7,585	80,843	172,386
2030 Owner Occupied Housing Units	3,893	40,812	86,438
2030 Renter Occupied Housing Units	3,277	35,893	75,544
2030 Vacant Housing Units	415	4,139	10,404





● Retail Center ● Casino & Resort ● Golf & Recreation ● Hospital





Lease Details



\$2.25 PSF NNN

Sublease Rate



\$0.32 PSF

CAM Charges



\$2,762.75

Monthly Rent

Suite 104 Information

+ Total SF	±1,075
+ Private Offices	2
+ Kitchenette	1
+ Restroom	1
+ Available	Immediately

*Drawings and plans are not to scale. Any measurements are approximate and are for illustrative purposes only. There is no guarantee, warranty or representation as to the accuracy or completeness of any plans or designs.*



## Interior Photos



# Clark County Nevada


## Synopsis


As of the 2020 census, the population was 2,265,461, with an estimated population of 2,350,611 in 2024. Most of the county population resides in the Las Vegas Census County Divisions across 435 square miles. It is by far the most populous county in Nevada, and the 14th most populous county in the United States. It covers 7% of the state's land area but holds 73% of the state's population, making Nevada one of the most centralized states in the United States.


With jurisdiction over the world-famous Las Vegas Strip and covering an area the size of New Jersey, Clark County is the nation's 14th-largest county. The County is a mix of urban and rural locales that offers the convenience of city living with access to some of the nation's best outdoor recreational areas just a short drive away.

Clark County employs more than 10,000 people over 38 departments. The County has an annual budget of \$11.4 billion, which surpasses that of the state government.

## Quick Facts

 **±7,892**  
Land Area  
(Square Miles)

 **2,265,461**  
Population

 **298**  
Pop. Density  
(Per Square Mile)

*Sources: clarkcountynv.gov, data.census.gov, lvgea.org, wikipedia.com*



# Professional Sports

## Synopsis

The Las Vegas Valley is home to many sports, most of which take place in the unincorporated communities around Las Vegas rather than in the city itself. It has rapidly established itself as a premier sports city, hosting a lineup of major professional teams that have brought home championships. These successful teams not only foster fan interest and growth but also play a significant role in strengthening the local economy.

The Vegas Golden Knights, the city's first major league franchise, wasted no time making their mark by winning the Stanley Cup in 2023. The Las Vegas Aces have dominated the WNBA, securing back-to-back championships in 2022 and 2023. The Las Vegas Raiders, while having their championship triumphs tied to their time in Oakland and Los Angeles, have a storied history that includes three world championship victories (XI, XV, and XVIII). The Las Vegas Athletics brings a legacy of 9 world championships and are looking to add more at their new home. These teams have not only captivated local fans but have also helped solidify reputation of the city as a major player in the world of professional sports.

Las Vegas is also a great place for minor league sports, with the Las Vegas Aviators (Minor League Baseball, Triple-A affiliate of the Las Vegas Athletics), the Henderson Silver Knights (American Hockey League, affiliate of the Vegas Golden Knights), and the Las Vegas Lights FC (USL Championship soccer) all calling the area home. The city also has indoor football and box lacrosse teams, the Vegas Knight Hawks and the Las Vegas Desert Dogs, respectively, who share a venue in Henderson.



Service you deserve. People you trust.



WORLD CHAMPIONS



WORLD CHAMPIONS



WORLD CHAMPIONS



WORLD CHAMPIONS



**HENDERSON**  
SILVER KNIGHTS™



5960 South Jones Boulevard  
Las Vegas, Nevada 89118

T 702.388.1800 | F 702.388.1010  
www.mdlgroup.com



# Nevada Tax Advantages

## NEVADA

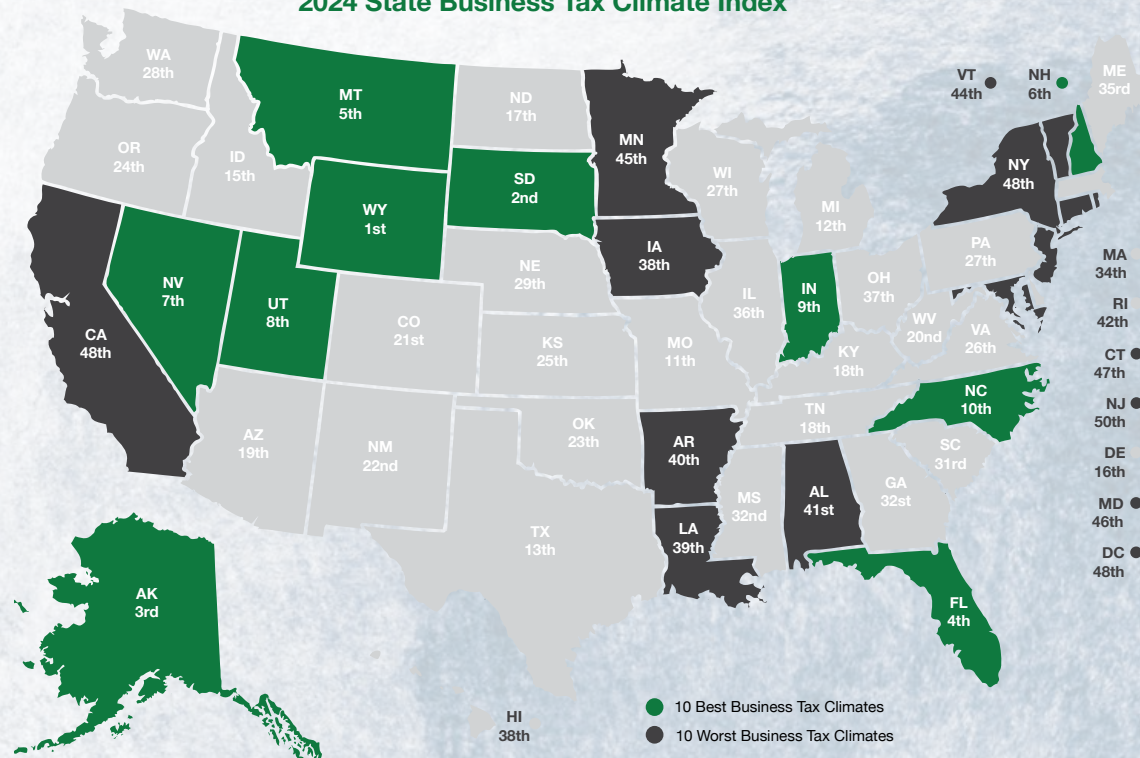
has always been a popular choice for businesses due to various factors such as low-cost startup, regulatory benefits, and competitive utility rates.

The Tax Climate Index ranking  
California ranks 48th, Arizona 14th,  
Idaho 16th, Oregon 28th and Utah  
8th.

### Here are the main tax advantages of this state:

- No income tax
- No tax on pensions
- No tax on social security
- No tax on estate or inheritance
- Low property taxes
- No gross receipts tax
- No franchise tax
- No inventory tax
- No tax on issuance of corporate shares
- No tax on sale or transfer of shares

## 2024 State Business Tax Climate Index



## Nevada Tax System:

Nevada is ranked 7th in the Tax Foundation's 2020 State Business Tax Climate Index, focusing on corporate taxes, individual income taxes, sales taxes, unemployment insurance taxes, and property taxes.

Source: Nevada Governor's Office of Economic Development;  
[www.TaxFoundation.org](http://www.TaxFoundation.org)



### Road Transportation

Las Vegas, and surrounding towns are less than one day's drive over arterial interstate highways to nearly 60 million consumers as well as to the major U.S. deep water seaports serving the Pacific Rim.



### Rail Transportation

Major Union Pacific and Southern Pacific rail connections in Las Vegas and Reno also, too, play an essential role in carrying the world's freight from the Pacific Coast to America's Heartland and beyond.



### Air Transportation

Globally, Harry Reid International Airport in Las Vegas has been a Top 20 airport for more than five years, annually serving more than 40 million and handling more than 189 million pounds of cargo.



Service you deserve. People you trust.



5960 South Jones Boulevard  
Las Vegas, Nevada 89118

T 702.388.1800 | F 702.388.1010  
[www.mdlgroup.com](http://www.mdlgroup.com)



# Southern Nevada Growth

200,000+

Number of jobs  
added between  
2011 and 2019.

7,500+

Number of new  
businesses added  
between 2011 and 2019.

85%

Milestone graduation  
rate for Clark County  
school district in 2019.



## Education & Workforce Development

Southern Nevada's post-secondary education and training institutions have significantly increased their offerings.

Notably, the **University of Nevada, Las Vegas (UNLV)** doubled its research and development (R&D) performance over the last decade and reached R1 status in 2018, the highest classification for research universities. Additionally, the newly formed UNLV School of Medicine started class in 2017.

**Nevada State College (NSC)** more than double its degree awards since 2011, with especially strong growth in awards to racial and ethnic minorities, and in health professions that support a key regional target industry.

**The College of Southern Nevada (CSN)** was named as a Leader College of Distinction by national non-profit network Achieving the Dream in 2019 for its work on improving student outcomes and reducing student achievement gaps.

## Innovation Ecosystem

In 2016, Las Vegas established an Innovation District to spur smart-city technology infrastructure and launched the International Innovation Center @ Vegas (IIC@V) incubator to support development of high priority emerging technologies.

The Las Vegas-based Nevada Institute for Autonomous Systems was designated in 2013 as one of six official unmanned aircraft systems (UAS) test sites in the United States, and the UNLV Tech Park has quickly emerged as a hub for regional innovation.

In July 2019, Google broke ground on a \$600 million data center, and in October 2019 Switch announced a partnership with UNLV to support sports science R&D. Switch also expanded its footprint in Southern Nevada to 4.6M SF of data center space.

The Las Vegas Convention and Visitors Authority (LVCVA) partnered with the Boring Company to build a high-speed electric autonomous people mover for the Las Vegas Convention Center.

*Source: Las Vegas Global Economic Alliance (LVGEA)*