



**Keegan & Coppin**  
COMPANY, INC.

FOR SALE

**NORTHGATE PROPERTIES  
1, 5, 25, 35, 45 & 55 MITCHELL BLVD  
SAN RAFAEL, CA**

**OUTSTANDING OPPORTUNITY  
94% LEASED OFFICE AND  
WAREHOUSE PROJECT**

REPRESENTED BY:

**MATT STORMS, PARTNER**  
LIC # 01233478 (415) 461-1010, EXT 123  
[MSTORMS@KEEGANCOPPIN.COM](mailto:MSTORMS@KEEGANCOPPIN.COM)





## EXECUTIVE SUMMARY



**NORTHGATE PROPERTIES**  
**1, 5, 25, 35, 45 & 55 MITCHELL BLVD.**  
**SAN RAFAEL, CA**

OUTSTANDING OPPORTUNITY

Available for purchase for the first time, Northgate Properties represents a generational opportunity to acquire an iconic multi-tenant commercial property at the gateway to the Northgate Industrial Park, situated on 5.25 acres with immediate access to Highway 101. The buildings have been meticulously maintained and constantly updated and historically enjoy high occupancy levels far above the market average, due to the buildings' quality, amenities and campus-like environment. Both buildings are fully sprinklered, with ADA upgrades throughout, and all building systems are in pristine condition.

Currently 94% leased, the 67 tenant spaces attract a wide variety of small and medium-sized businesses that appreciate the comfortable, efficient and affordable location, the abundant parking, and the flexible floor plans. Under market rents provide future upside for a new owner. The offering also includes the leasehold of two adjacent parcels, which may present an interesting opportunity for a buyer.

Northgate Properties represents an exceptionally stable asset, with pricing well below replacement cost, and, with its 5.25 flat acres, an opportunity for future development.

- 5.25 flat acres
- 74,873 sq. ft. of improvements
- 94% leased
- 67 tenant spaces
- Bonus cell tower income
- Meticulously maintained
- Constantly updated
- 256 striped parking stalls



**REPRESENTED BY:**

**MATT STORMS, PARTNER**  
LIC # 01233478 (415) 461-1010, EXT 123  
MSTORMS@KEEGANCOPPIN.COM

The above information, while not guaranteed, has been secured from sources we believe to be reliable. Submitted subject to error, change or withdrawal. An interested party should verify the status of the property and the information herein.

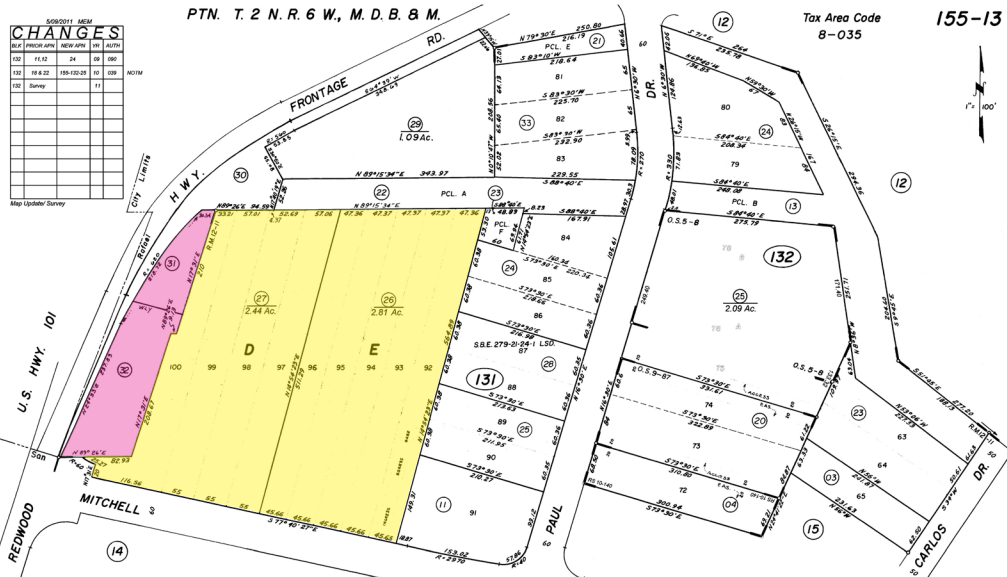


# PROPERTY DESCRIPTION



**NORTHGATE PROPERTIES**  
1, 5, 25, 35, 45 & 55 MITCHELL BLVD.  
SAN RAFAEL, CA

OUTSTANDING OPPORTUNITY



## FEE SIMPLE OFFERING (yellow highlight)

25 & 35 Mitchell Boulevard  
APN: 155-131-27  
Gross Land Area: 106,286 sf (2.44 acres)  
Gross Building Area: 28,480 sf  
Zoning: O  
Parking: 115 striped stalls

45 & 55 Mitchell Boulevard  
APN: 155-131-26  
Gross Land Area: 122,403 sf (2.81 acres)  
Gross Building Area: 38,428 sf  
Zoning: LI/O  
Parking: 106 striped stalls

## LEASEHOLD OFFERING (pink highlight)

1 & 5 Mitchell Boulevard  
APN's: 155-131-32 and 155-131-31  
Gross Land Area: 35,088 sf (.81 acres)  
Gross Building Area: 8,340 sf  
Leasehold Expiration: March 31, 2026  
Zoning: O  
Parking: 35 striped stalls

## 2025 PROJECTED GROSS INCOME

\$1,843,440

## OCCUPANCY

94% Leased

## OFFERING PRICE (combined fee simple and leasehold)

\$16,000,000

REPRESENTED BY:

**MATT STORMS, PARTNER**  
LIC # 01233478 (415) 461-1010, EXT 123  
MSTORMS@KEEGANCOPPIN.COM

The above information, while not guaranteed, has been secured from sources we believe to be reliable. Submitted subject to error, change or withdrawal. An interested party should verify the status of the property and the information herein.





## ABOUT US



NORTHGATE PROPERTIES  
1, 5, 25, 35, 45 & 55 MITCHELL BLVD.  
SAN RAFAEL, CA

OUTSTANDING OPPORTUNITY



# Your partner in commercial real estate in the North Bay & beyond since 1976.

Keegan & Coppin has served our communities in the North Bay for well over 40 years. But our unmatched local experience is only part of what makes us the area's most trusted name in commercial real estate. At Keegan & Coppin, we bring together a range of services that go beyond traditional brokerage. That depth of knowledge and diverse skillset allows us to clarify and streamline all aspects of your transaction, giving you the confidence of knowing that we can help with anything that comes up through all phases of a project.

Keegan & Coppin Co., Inc.  
101 Larkspur Landing Circle, Ste. 112  
Larkspur, CA 94939  
[www.keegancoppin.com](http://www.keegancoppin.com)  
(415) 461-1010

The above information, while not guaranteed, has been secured from sources we believe to be reliable. Submitted subject to error, change or withdrawal. An interested party should verify the status of the property and the information herein.

REPRESENTED BY:

MATT STORMS, PARTNER  
LIC # 01233478 (415) 461-1010, EXT 123  
[MSTORMS@KEEGANCOPPIN.COM](mailto:MSTORMS@KEEGANCOPPIN.COM)