

Prime Steinway Street Retail Available

30-32/36 Steinway Street, Astoria, NY 11103

PROPERTY INFORMATION:

ADDRESS: 30-32/36 STEINWAY ST

CITY, STATE: QUEENS, NY 11103

NEIGHBORHOOD: ASTORIA

SIZES AVAILABLE: +/- 5,000 SF (DIVISIBLE)

SPACE A: +/- 2,000 SF w/ 23' FRONTAGE

SPACE B: +/- 3,000 SF w/ 37' FRONTAGE

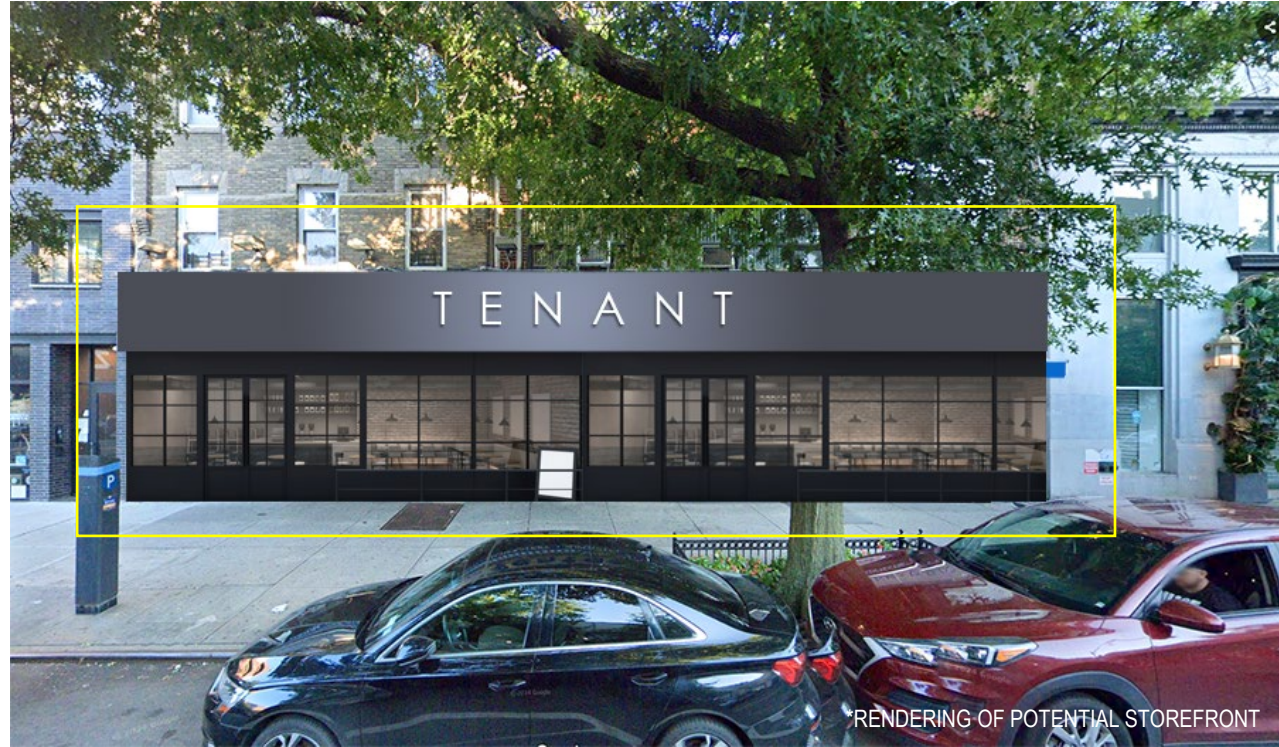
FRONTAGE: 60' ON STEINWAY ST.

ASKING RENT: UPON REQUEST

POSSESSION: ARRANGED

PROPERTY HIGHLIGHTS:

- PRIME RETAIL SPACE ON THRIVING STEINWAY STREET
- SURROUNDED BY LOCAL AND NATIONAL TENANTS
- HIGH-VISIBILITY BRANDING OPPORTUNITY
- 1.5 BLOCKS FROM THE M&R SUBWAY STATION ON BROADWAY & STEINWAY
- DIRECTLY ON "SNEAKER ROW"



AREA TENANTS:

CVS *Walgreens*
pharmacy **DUANE**reade™

EUROPEAN
WAX
CENTER

NYSC

planet
fitness

DUNKIN'
DONUTS

KFC

snipes

T-Mobile

EXPRESS

BANANA REPUBLIC



POPULAR
COMMUNITY BANK



WebsterBank

fabcoshoes

JIMMY
JAZZ

cricket

Foot Locker

SCHUCKMAN
REALTY INC.
schuckmanrealty.com

120 NORTH VILLAGE AVENUE
ROCKVILLE CENTRE, NY 11570
516-496-8888

Contact Exclusive Brokers for More Information

Ryan Adhami
Associate RE Broker
ra@schuckmanrealty.com

Kenneth Schuckman
RE Broker
ken@schuckmanrealty.com

30-32/36 Steinway Street, Astoria, NY 11103

73'-7"

6'-2"

OFFICE

BATH

CL.

STORAGE

BATH

STORAGE

BATH

TO CELLAR

TO 2ND FL UP

WINDOW DISPLAY

WINDOW DISPLAY

+/- 5,000 SF

58'-2"

35'-11"

22'-3"

80'-5"

6'-2"

STEINWAY STREET



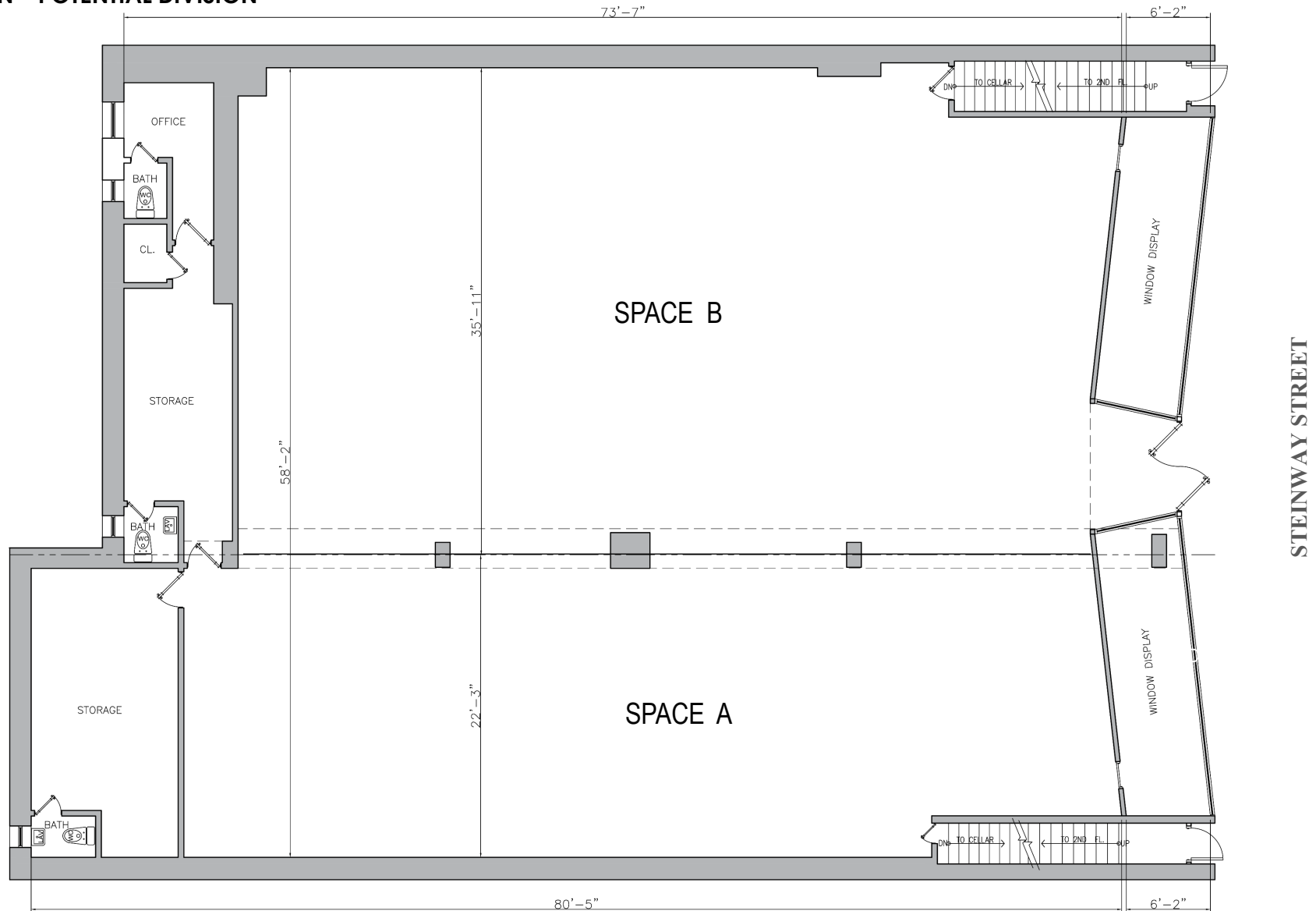
120 NORTH VILLAGE AVENUE
ROCKVILLE CENTRE, NY 11570
516-496-8888

This information contained herein has been obtained from sources believed reliable. However, we have not verified it and make no guarantee, warranty or representation about it. It is submitted subject to the possibility of errors, omissions, change of price, rental and other conditions, prior sale, lease or financing, or withdrawal without notice. It is your responsibility to independently confirm its accuracy and completeness. Any projections, opinions, assumptions, or estimates used are for example only and they may not represent the current or future suitability, availability or performance of the property. You and your tax and legal advisors should conduct your own investigation of any property and transaction. We may or may not have an exclusive or nonexclusive contractual relationship with a tenant or the owner/landlord of a particular property; and if we do, such relationship shall be fully disclosed to you on a timely basis. Third-party trademarks, service marks, graphics, and logos belong to third parties. You are not granted any right or license with respect to Schuckman Realty Inc.'s trademarks service marks, graphics, and logos or the trademarks service marks, graphics, and logos of any third party. Kenneth Schuckman is Broker of record of Schuckman Realty Inc.

Prime Steinway Street Retail Available

30-32/36 Steinway Street, Astoria, NY 11103

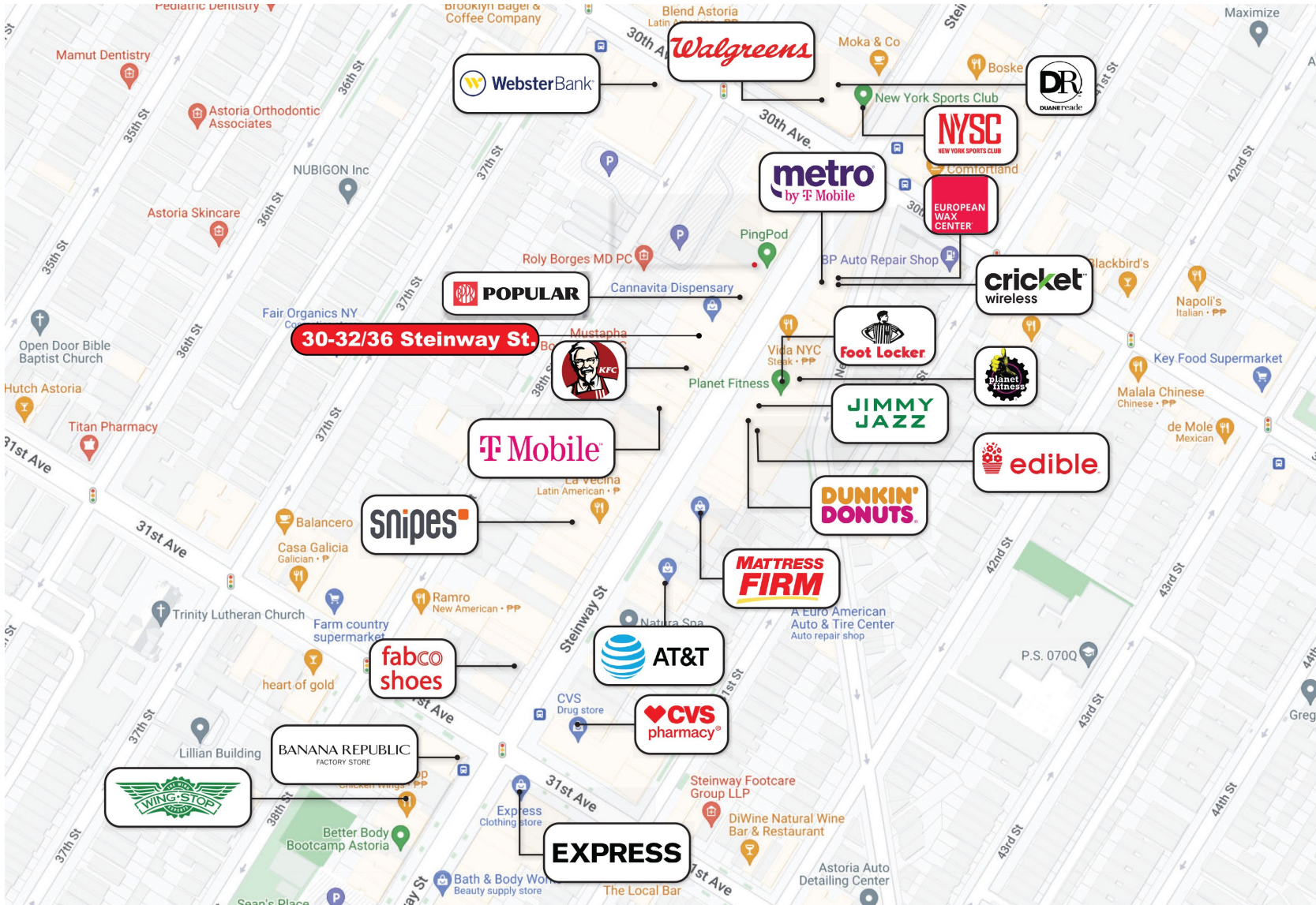
FLOOR PLAN – POTENTIAL DIVISION



Prime Steinway Street Retail Available

30-32/36 Steinway Street, Astoria, NY 11103

AREA RETAIL



SCHUCKMAN[®]
REALTY INC.
schuckmanrealty.com

120 NORTH VILLAGE AVENUE
ROCKVILLE CENTRE, NY 11570
516-496-8888

Contact Exclusive Brokers for More Information

Steven Hakakian
RE Salesperson
sh@schuckmanrealty.com

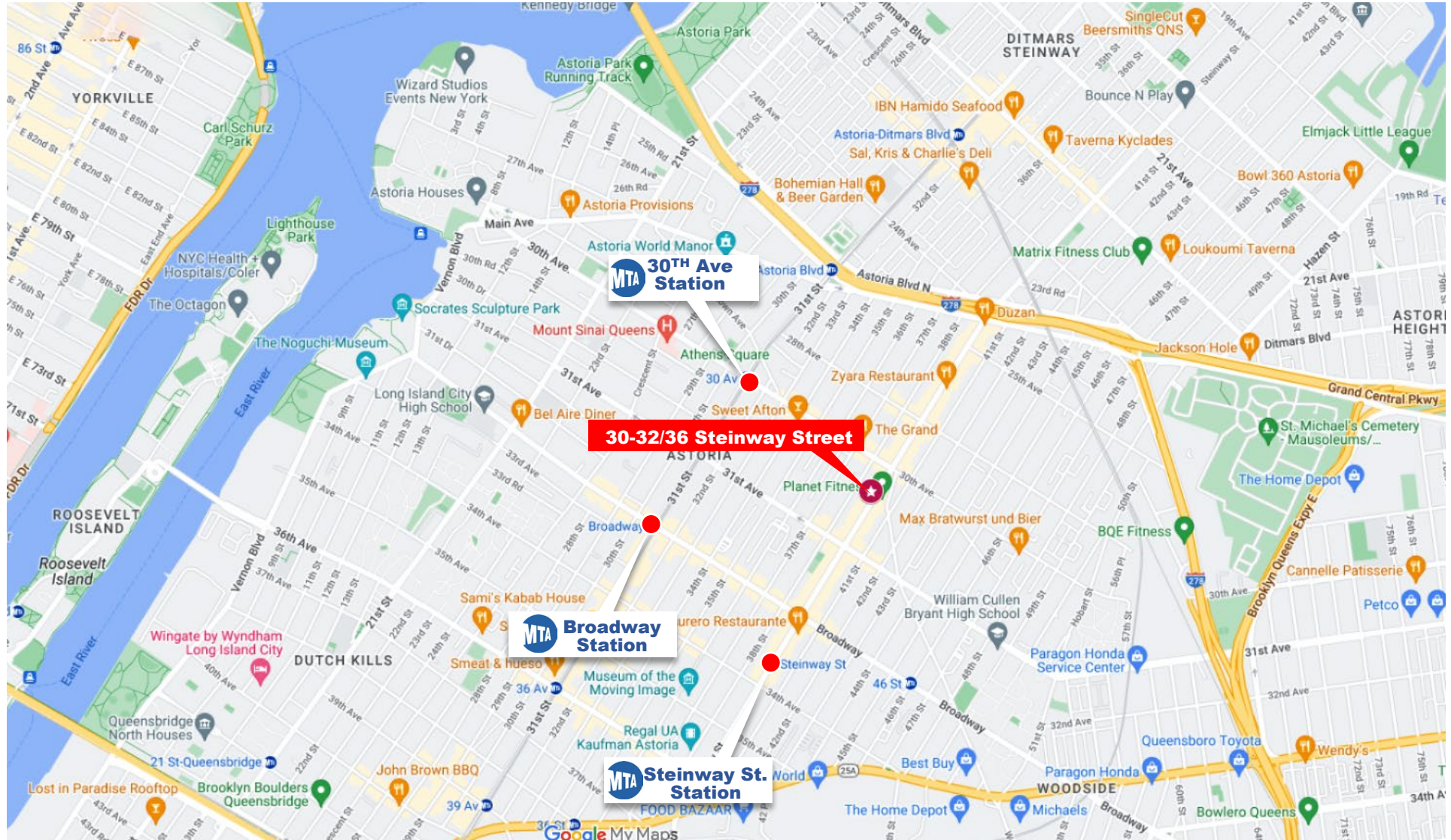
Baruch Edelkopf
Associate RE Broker
be@schuckmanrealty.com

Ryan Adhami
Associate RE Broker
ra@schuckmanrealty.com

Prime Steinway Street Retail Available

30-32/36 Steinway Street, Astoria, NY 11103

LOCATION MAP



Contact Exclusive Brokers for More Information

SCHUCKMAN
REALTY INC.
schuckmanrealty.com

120 NORTH VILLAGE AVENUE
ROCKVILLE CENTRE, NY 11570
516-496-8888

Steven Hakakian
RE Salesperson
sh@schuckmanrealty.com

Baruch Edelkopf
Associate RE Broker
be@schuckmanrealty.com

Ryan Adhami
Associate RE Broker
ra@schuckmanrealty.com

Prime Steinway Street Retail Available

30-32/36 Steinway Street, Astoria, NY 11103

DEMOGRAPHICS

| | 0.25 miles | 0.5 miles | 0.75 miles |
|---------------------------------|------------|-----------|------------|
| Population | | | |
| 2010 Population | 10,173 | 46,888 | 89,049 |
| 2020 Population | 10,095 | 47,803 | 91,103 |
| 2024 Population | 9,885 | 46,545 | 89,056 |
| 2029 Population | 9,835 | 46,104 | 89,164 |
| 2010-2020 Annual Rate | -0.08% | 0.19% | 0.23% |
| 2020-2024 Annual Rate | -0.49% | -0.63% | -0.53% |
| 2024-2029 Annual Rate | -0.10% | -0.19% | 0.02% |
| 2020 Male Population | 48.9% | 49.4% | 48.8% |
| 2020 Female Population | 51.1% | 50.6% | 51.2% |
| 2020 Median Age | 34.9 | 34.8 | 35.4 |
| 2024 Male Population | 49.3% | 50.0% | 49.6% |
| 2024 Female Population | 50.7% | 50.0% | 50.4% |
| 2024 Median Age | 35.8 | 35.7 | 36.4 |
| Households | | | |
| 2024 Wealth Index | 63 | 66 | 68 |
| 2010 Households | 4,452 | 21,186 | 39,745 |
| 2020 Households | 4,634 | 22,605 | 42,625 |
| 2024 Households | 4,561 | 22,072 | 41,793 |
| 2029 Households | 4,534 | 21,824 | 41,758 |
| 2010-2020 Annual Rate | 0.40% | 0.65% | 0.70% |
| 2020-2024 Annual Rate | -0.37% | -0.56% | -0.46% |
| 2024-2029 Annual Rate | -0.12% | -0.23% | -0.02% |
| 2024 Average Household Size | 2.16 | 2.10 | 2.12 |
| Median Household Income | | | |
| 2024 Median Household Income | \$94,391 | \$95,543 | \$94,527 |
| 2029 Median Household Income | \$104,035 | \$105,153 | \$104,974 |
| 2024-2029 Annual Rate | 1.96% | 1.94% | 2.12% |
| Average Household Income | | | |
| 2024 Average Household Income | \$119,986 | \$123,316 | \$124,466 |
| 2029 Average Household Income | \$134,679 | \$139,109 | \$140,566 |
| 2024-2029 Annual Rate | 2.34% | 2.44% | 2.46% |
| Per Capita Income | | | |
| 2024 Per Capita Income | \$55,522 | \$58,166 | \$58,333 |
| 2029 Per Capita Income | \$62,246 | \$65,478 | \$65,749 |
| 2024-2029 Annual Rate | 2.31% | 2.40% | 2.42% |

Contact Exclusive Brokers for More Information