

4680 MISSION STREET, 2ND FLOOR

SAN FRANCISCO, CA

FOR LEASE

BALBOA PARK



PLEASE CONTACT:

MARK GEDYMIN
415-343-7289
MARK@BEACON-CRE.COM
LIC #: 01397159



OPPORTUNITY OVERVIEW

PROPERTY PROFILE

ADDRESS	4680 Mission St., 2 nd floor, San Francisco, CA 94112
PREMISES	+/- 4,000 RSF
FLOOR	2nd Floor (walk-up)
YEAR BUILT	1949
ZONING	NCD (Excelsior Outer Mission Neighborhood Commercial District)
SUBMARKET	Balboa Park
Asking: \$5,000.00 PER MONTH, IG	

The premises features:

- **Expansive wraparound window line**
- **Open plan with five rooms**
- **Two in-suite restrooms**

The building features:

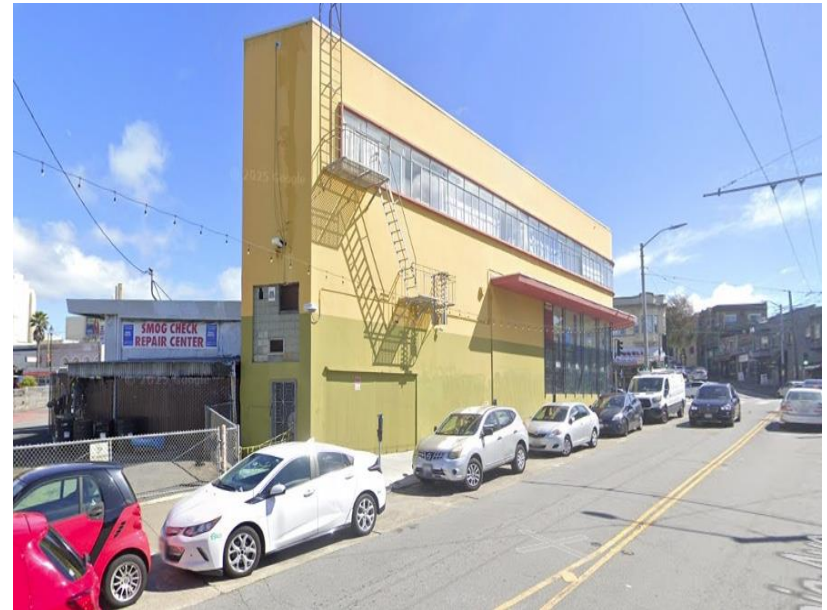
- **Close to shopping, dining, Highway 280 and along Muni's 14 & 49 lines**



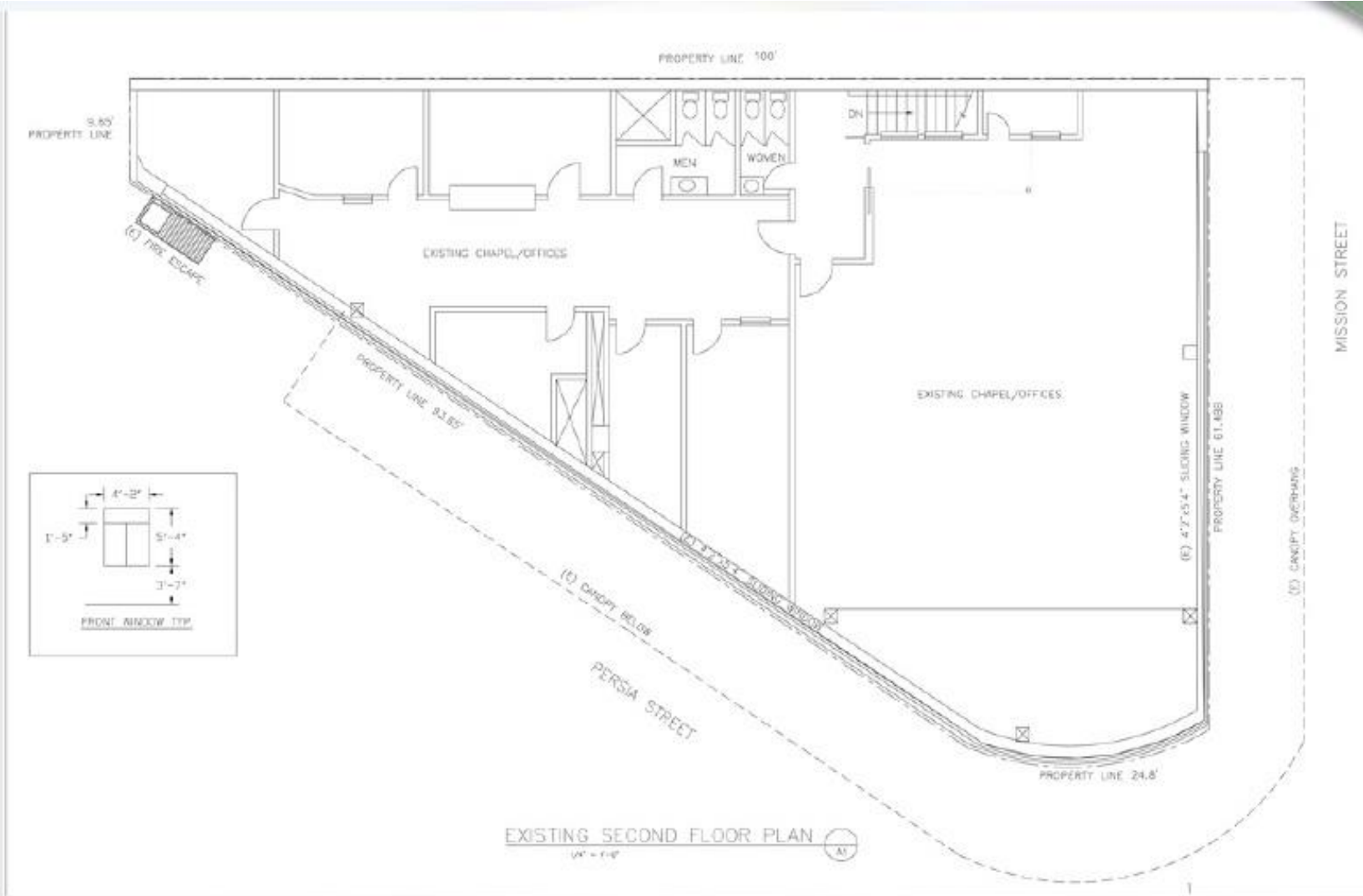
PHOTO GALLERY



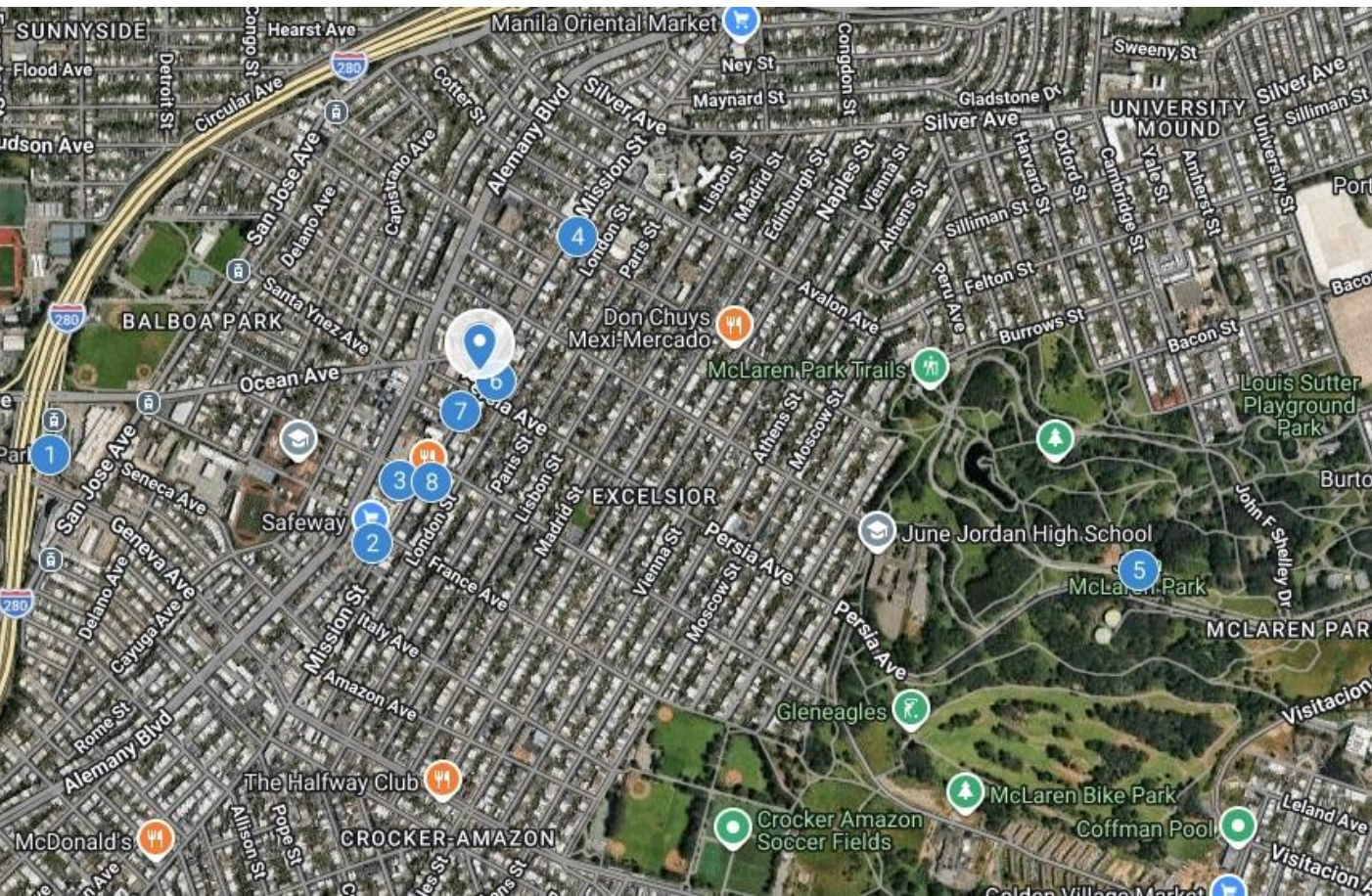
PHOTO GALLERY



FLOORPLAN



LOCATION OVERVIEW



- 1 Balboa Park
- 2 Safeway
- 3 United States Postal Service
- 4 Excelsior Coffee
- 5 John McLaren Park
- 6 Pho Golden
- 7 Cumaica Coffee
- 8 Taqueria El Farolito



MARK GEDYMIN
415-343-7289
MARK@BEACON-CRE.COM
LIC #: 01397159



4680 MISSION STREET, 2ND FLOOR

SAN FRANCISCO, CA

The information contained in this document has been obtained from sources deemed reliable; however, no warranty or representation, expressed or implied, is made as to the accuracy of the information. Any projections, opinions, assumptions, or estimates used are for example only and do not represent the current or future performance of the property. The BEACON Commercial Advisors logo is property of BEACON Commercial Advisors. All other marks or logos displayed within this document are the property of their respective owners, and the use of such marks or logos does not imply any affiliation with or endorsement of BEACON Commercial Advisors.