

FOR LEASE

3119B 24th Street

San Francisco, CA 94010

Listing agents: Hans Hansson and Raul R. Pulido
Storefront Retail / Office for Lease

[View Online](#)



STARBOARD CRE
LOCAL • INDEPENDENT • ENTREPRENEURIAL

STARBOARDCRE.COM
OFC. PHONE 415.765.6900
49 POWELL STREET, SAN FRANCISCO, CA 94102

3119B 24th Street, San Francisco

Type	STOREFRONT RETAIL / OFFICE
Square Ft.	1,758 SF
Rate	\$5,449 Sq.Ft / \$3.10 per Sq. Ft
Term	3-5 Years

Looking for the perfect location for your office or medical practice in San Francisco? Look no further! We are thrilled to present an exceptional leasing opportunity at our prestigious property on 24th Street, situated in the heart of this vibrant neighborhood.

HIGHLIGHTS

- Built-to-suit space.
- Back patio.
- 2 to 3 bathrooms.
- Delivered entirely finished.
- Proximity to public transportation, making it easy for clients and employees to reach the location (BART, MUNI, 101 Highway, Mission St).
- Excellent visibility.
- Prime Location in the iconic Mission District.
- Surrounded by a diverse array of restaurants, cafes, and retail stores, ensuring a vibrant atmosphere.
- This space can be leased together with 3119A 24th ST (657 +/- Sq.Ft)



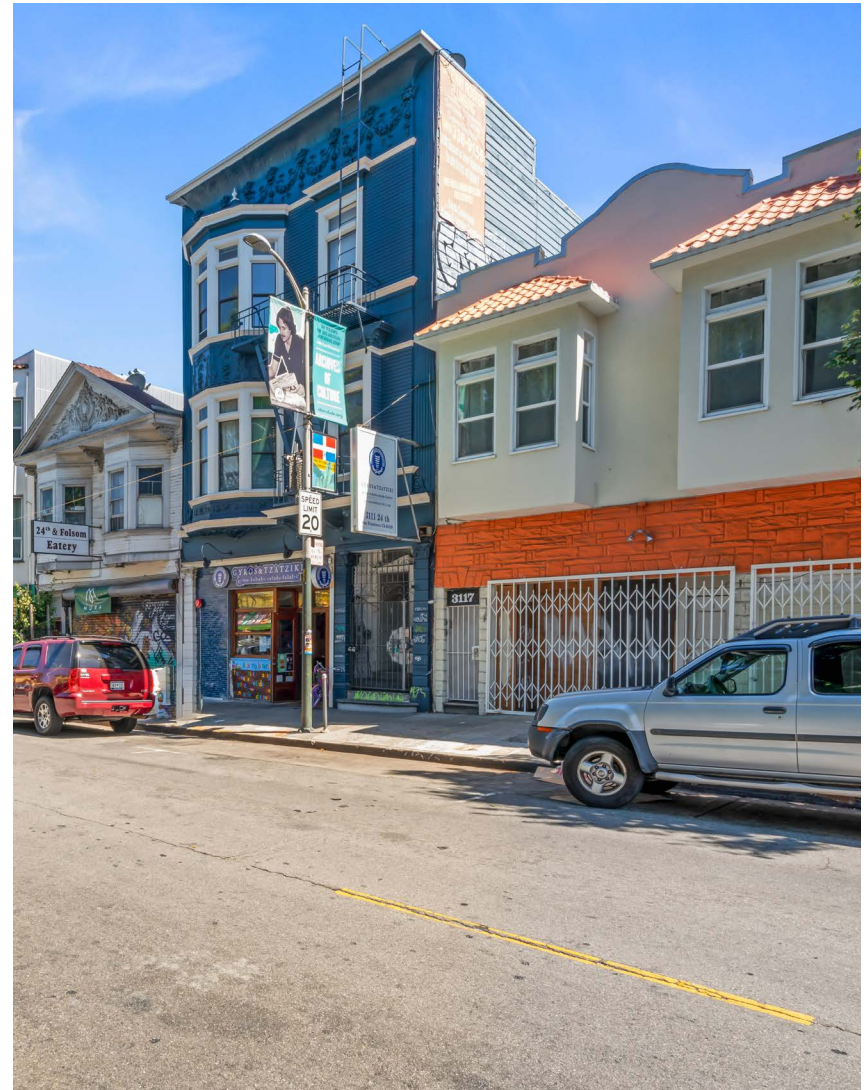
Location: conveniently located on 24th Street, this space benefits from excellent visibility and accessibility. Situated in a bustling neighborhood with a mix of residential and commercial properties, it promises to attract a steady flow of foot traffic and potential clients.

Non-Profit Organizations: This space is tailor-made for non-profits looking for a central location to base their operations. Whether you focus on community engagement, social services, or advocacy, this space provides the visibility and accessibility needed to make a positive impact.

Storefront Retail: This is the golden opportunity to establish or expand your retail presence in the most vibrant street in the Mission District. With its versatile space and strategic placement on 24th Street.

Medical Professionals: For healthcare practitioners, this space provides an ideal setting to set up your medical practice. Whether you're a dentist, physician, therapist, or specialist, the location's high visibility and accessibility will help you grow your patient base.

Business Offices: Entrepreneurs and businesses seeking office space will appreciate the professional environment and strategic location. Establish your corporate headquarters or satellite office in this bustling area, fostering a productive work environment for your team.



Current Condition



Staged



Current Condition



Staged





Hans Hansson

President / Broker of Record
hans@starboardcre.com
CELL: 415.517.2589
OFC. PHONE: 415.765.6900
BRE # 00872902

[View Online](#)



Raul R. Pulido

Multifamily Investment Specialist
raul@starboardcre.com
CELL: 650.660.0997
OFC. PHONE: 415.765.6900
BRE # 02083677

[View Online](#)



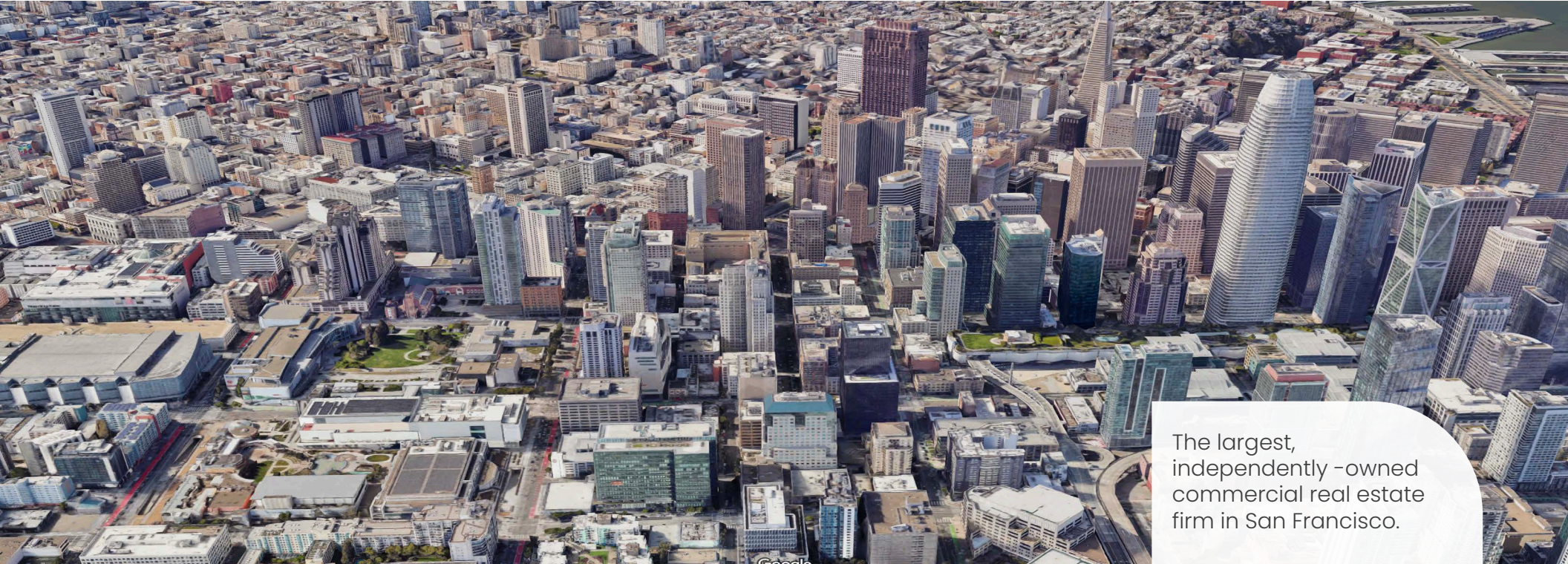


STARBOARD CRE
LOCAL • INDEPENDENT • ENTREPRENEURIAL

STARBOARDCRE.COM

OFC. PHONE 415.765.6900

49 POWELL STREET, SAN FRANCISCO, CA 94102



The largest,
independently -owned
commercial real estate
firm in San Francisco.

Unique Vision

We see what others miss

Local Market Leader

No one knows Northern
California like we do

Full Service Firm

We do it all

Locally based, technology forward, our brokers are highly qualified experts backed by a full-service, in-house support team who understand the intricacies of San Francisco real estate. Starboard CRE brings decades of brokerage experience representing over 600 million square feet of space with an aggregate lease value of over 10 billion and investments sold over 3 billion.

DRE# 01103056

