



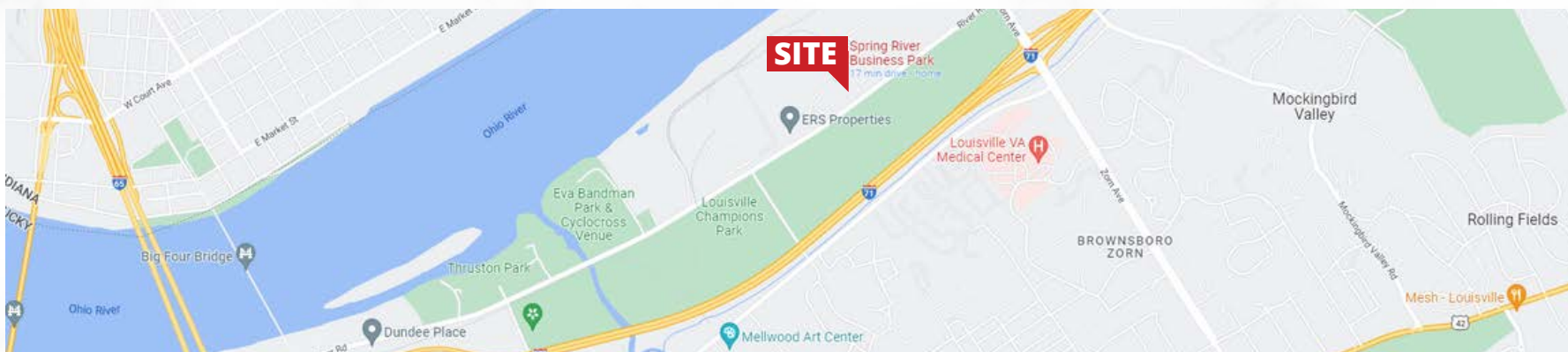
FOR LEASE
3 FLOORS | HIGH VISIBILITY
2305 RIVER ROAD
LOUISVILLE, KY
SPRING RIVER BUSINESS PARK

SCENIC AERIAL



River Road

SITE LOCATION



BUILDING DETAILS



TOTAL SQUARE FOOTAGE

32,586

NUMBER OF STORIES

3

BUILDING SIGNAGE

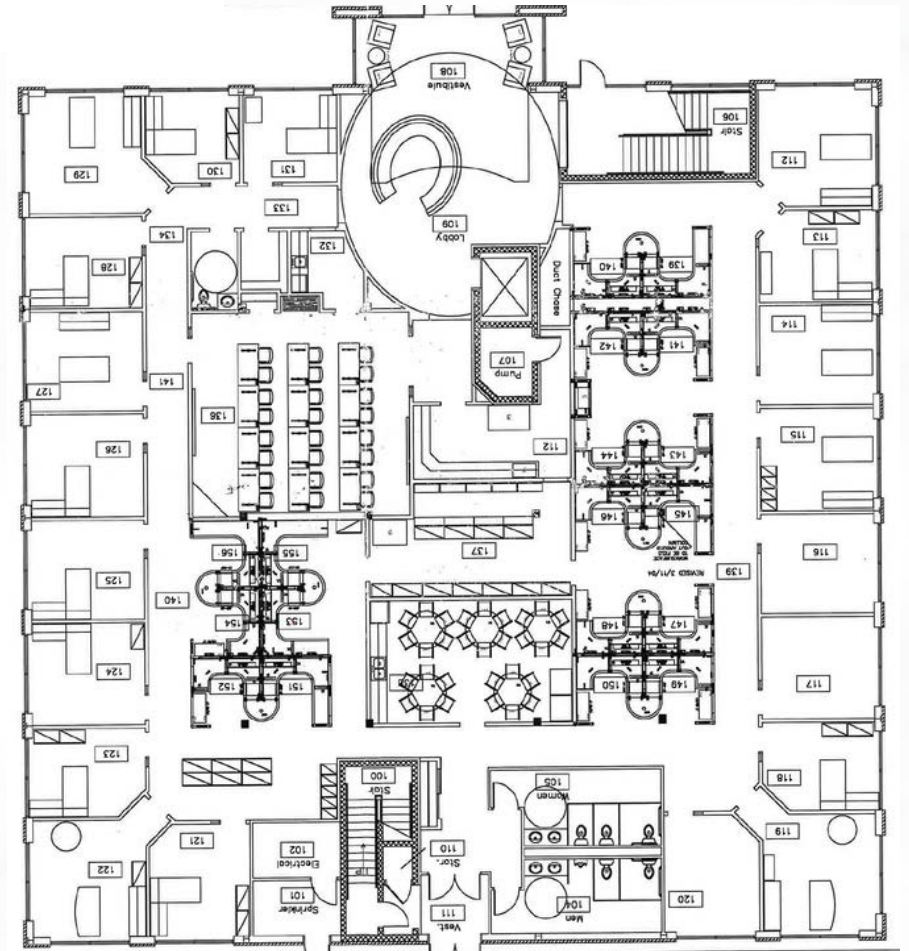
AVAILABLE

PARKING RATIO

4 : 1,000

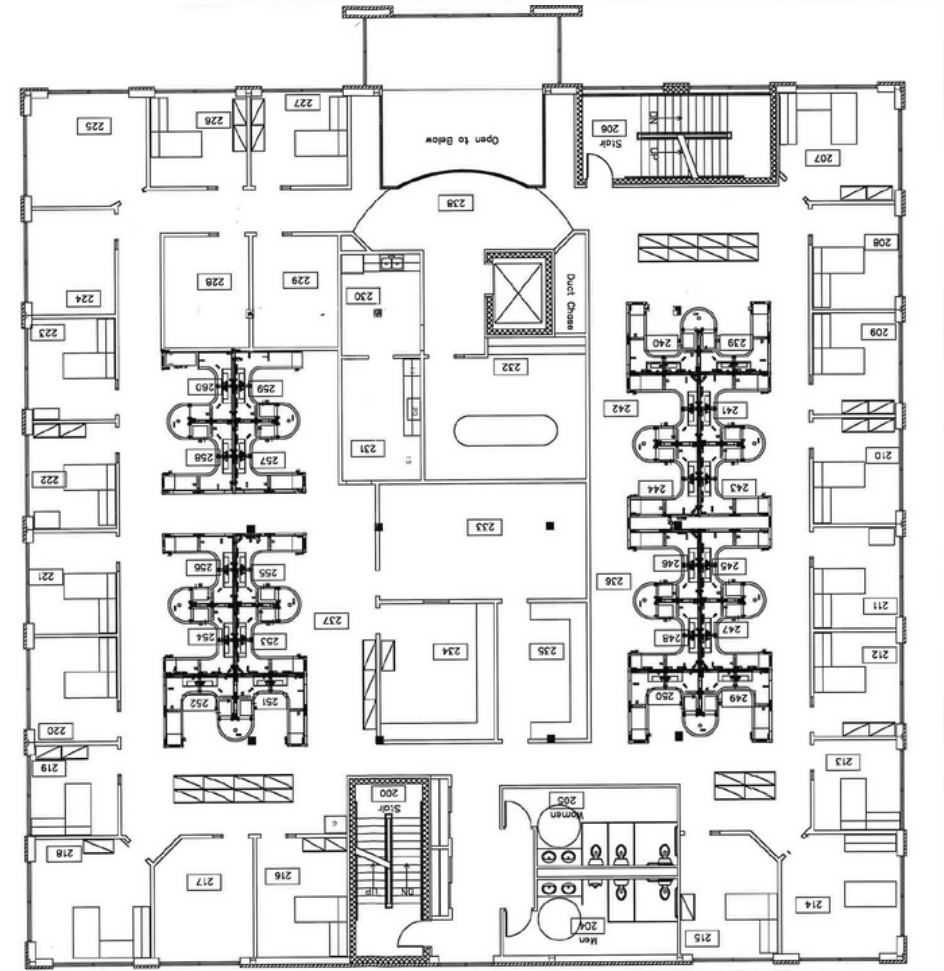
FLOOR PLAN

1ST FLOOR



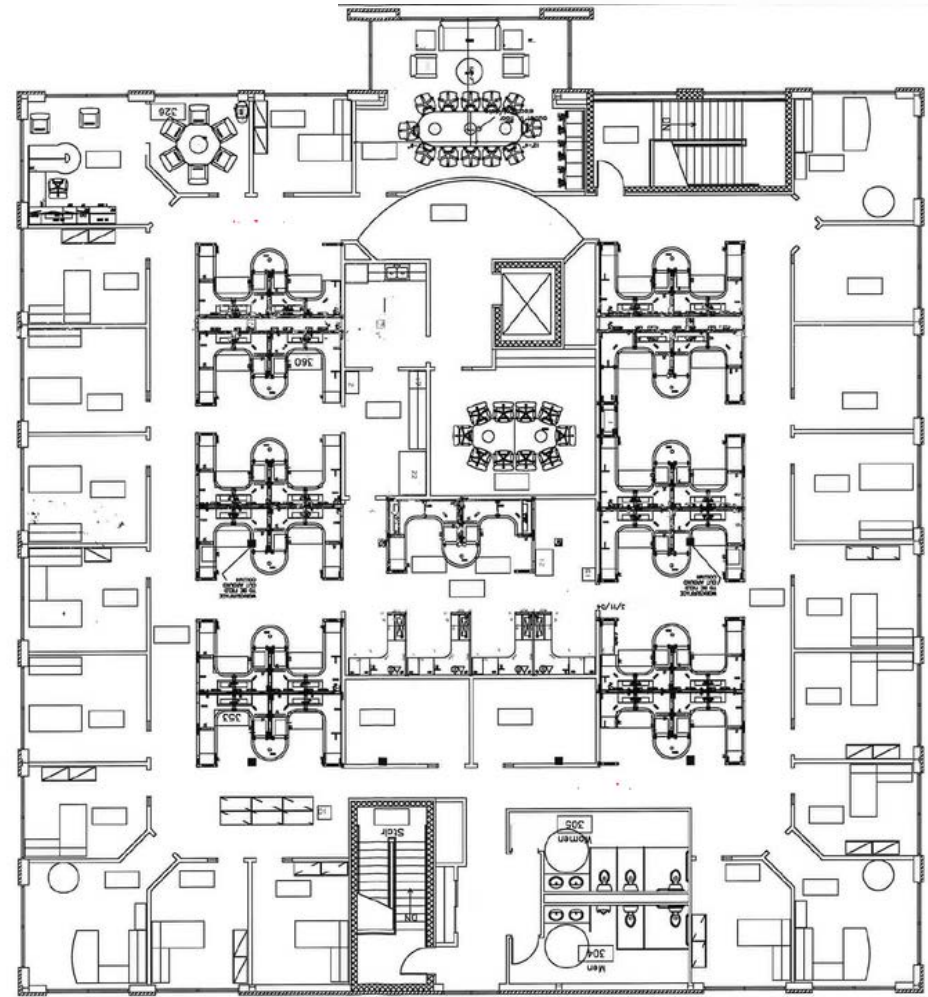
FLOOR PLAN

2ND FLOOR



FLOOR PLAN

3RD FLOOR



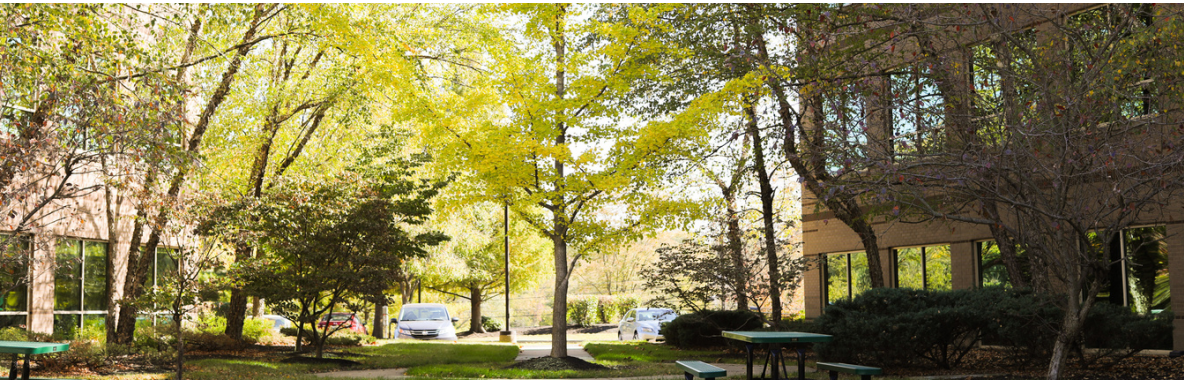
IMAGES

INTERIOR

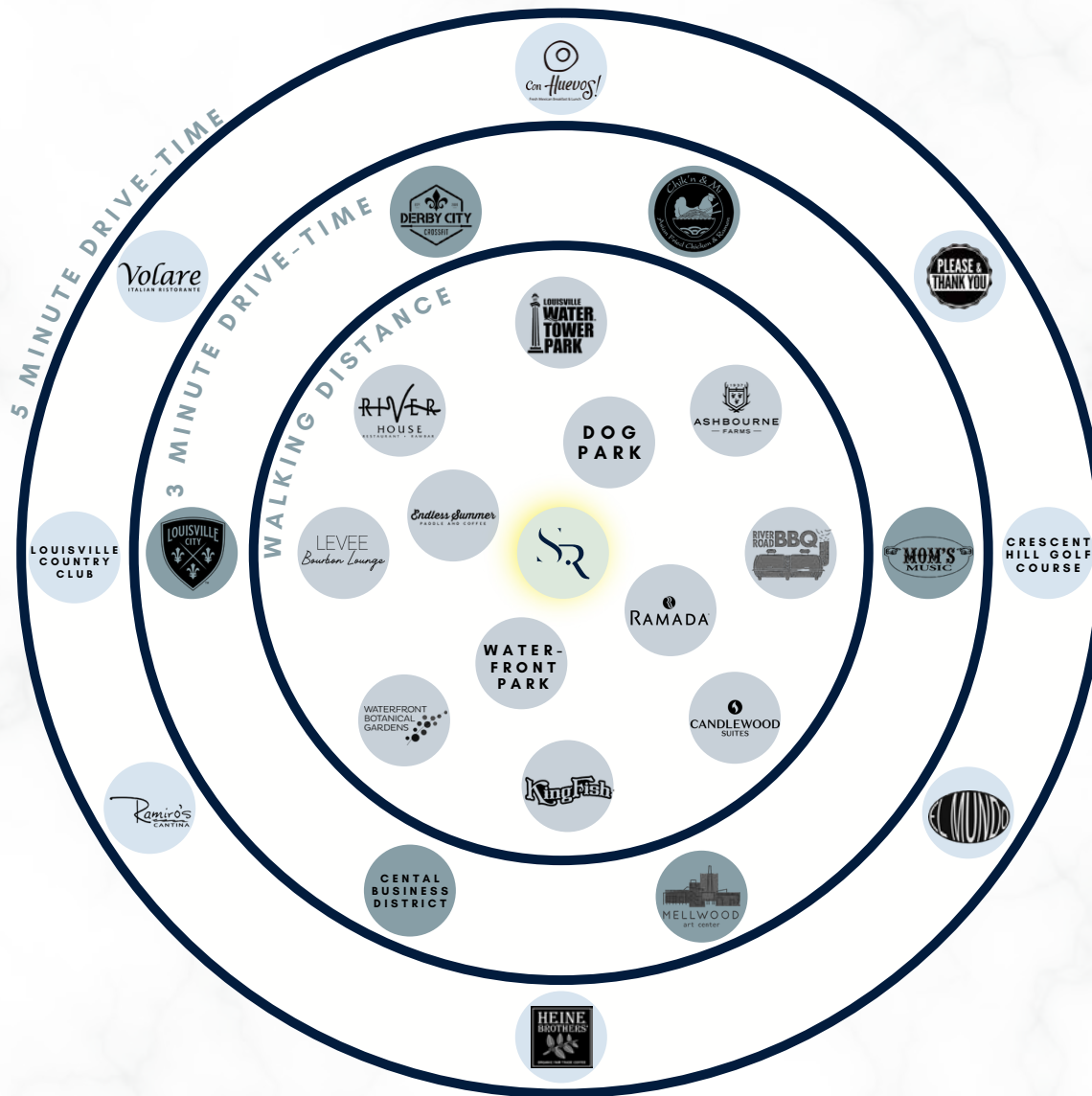


IMAGES

EXTERIOR



NEARBY AMENITIES



CONTACT INFORMATION



The information contained herein was obtained from sources we believe to be reliable. However, Horizon Commercial Realty nor the property owner has verified the information and make no representation, warranty or guarantee of its accuracy or completeness. The information provided is for informational purposes only and is provided subject to the possibility of errors, omissions, change in offering terms, withdrawal of offering without notice and to any other special listing conditions. You and your tax, legal and financial advisors agree to conduct an independent investigation.

John Hollenbach Jr.

jhollenbachjr@hcrky.com | 502.821.4080

Clayton Pitcock

cpitcock@hcrky.com | 502.417.8960

