

5300 3RD STREET

FOR LEASE | HIGH-EXPOSURE RETAIL CORNER | EXCELLENT ACCESS & PARKING

TCP
TOUCHSTONE
COMMERCIAL PARTNERS



WWW.TCPRE.COM

ETHAN MANN

C 415.990.9127

ethan@tcpre.com DRE # 0223262

GEORGE FARLEY

C 415.994.5767

george@tcpre.com DRE # 02233755

5300 3RD STREET

PROPERTY SUMMARY

ADDRESS

5300 3rd St, San Francisco, CA 94124

AVAILABLE SPACE

Building +/- 13,905 Square Feet

Lot Size +/- 34,314 Square Feet

RENTAL RATE

Negotiable, NNN

AVAILABLE

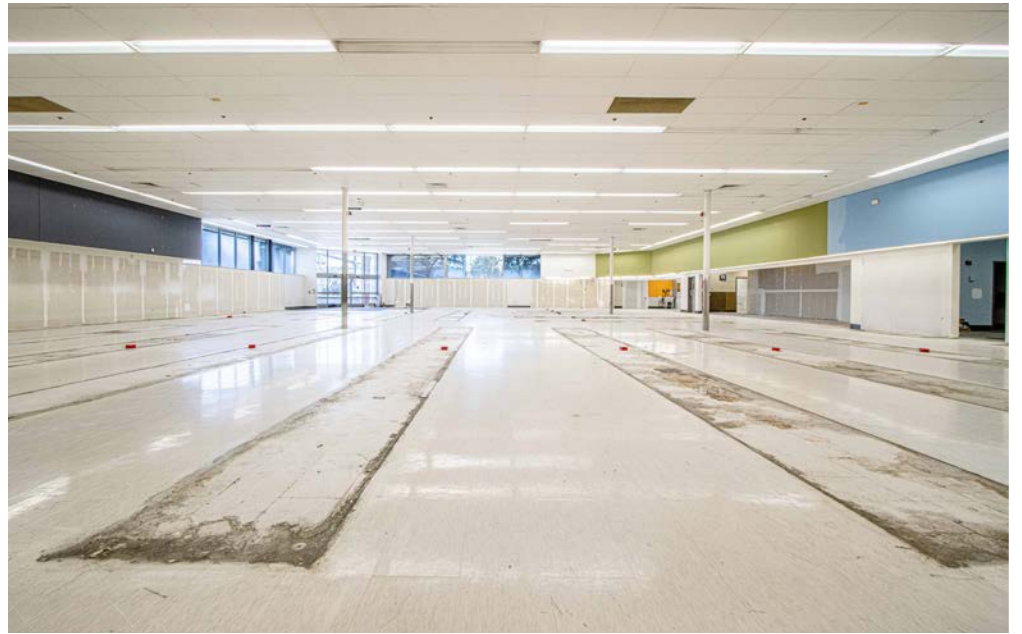
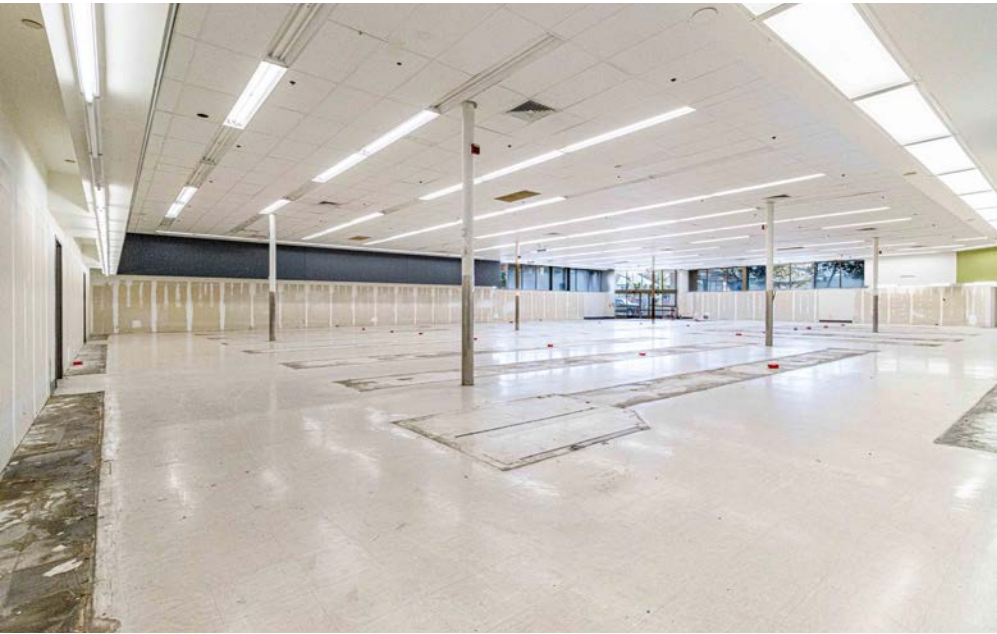
Immediately



BUILDING ATTRIBUTES

- + Former Walgreens Location
- + ~ Fifty (50) Parking Stalls
- + Three (3) Entrances & Exits Along Parking Lot
- + One (1) Loading Dock
- + Full HVAC Throughout
- + High Traffic Count
- + Negotiable TI Allowance
- + Prime Location w/ Access to HWY-101 and I-280





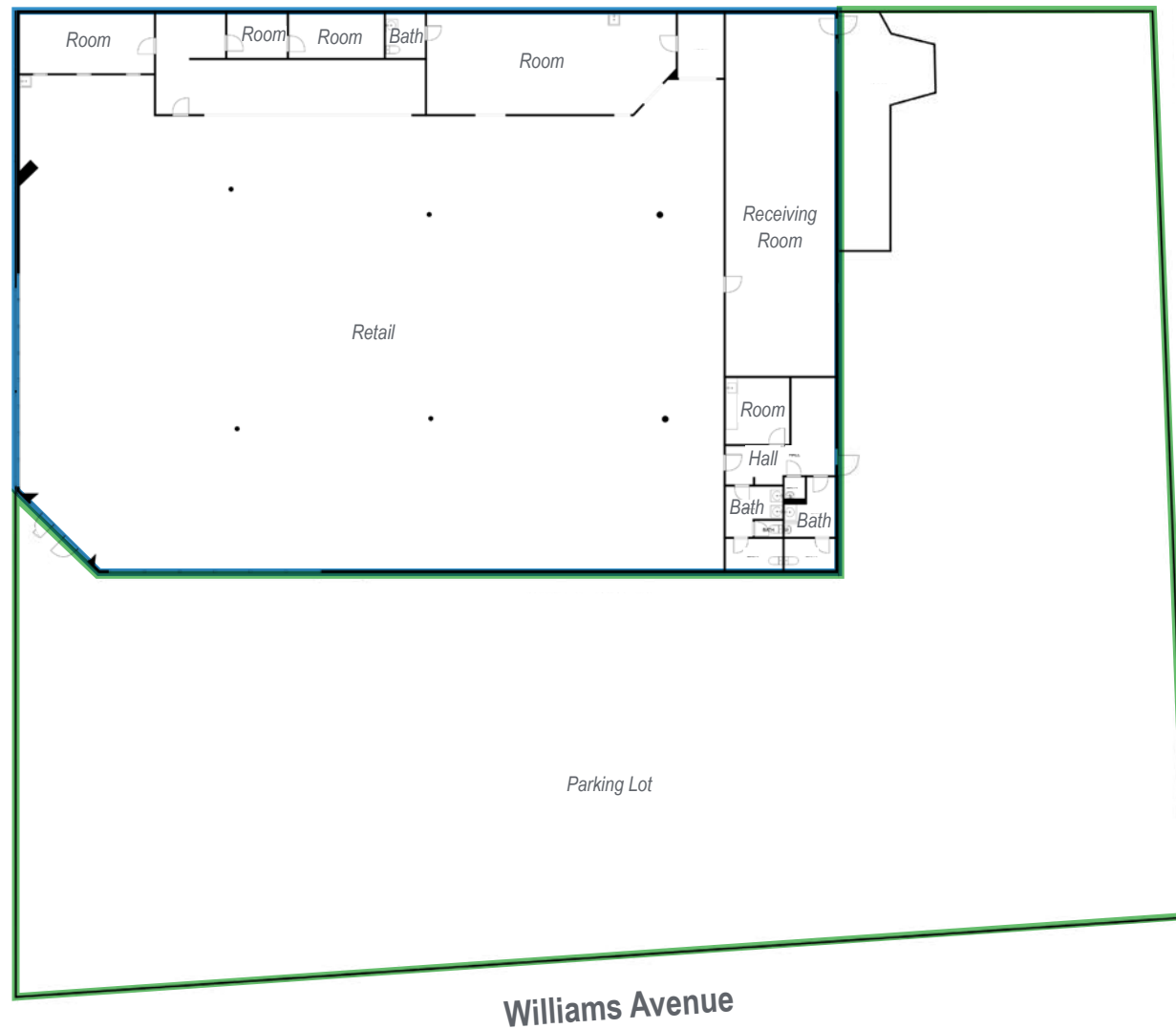
5300 3RD STREET

FLOOR PLAN

□ Building: +/- 13,905 Square Feet

□ Lot: +/- 34,314 Square Feet

3rd Street



Williams Avenue

5300 3RD STREET

LOCATION OVERVIEW

Desirable Bayview location, walkable to nearby amenities, public transportation and to surrounding neighborhoods.



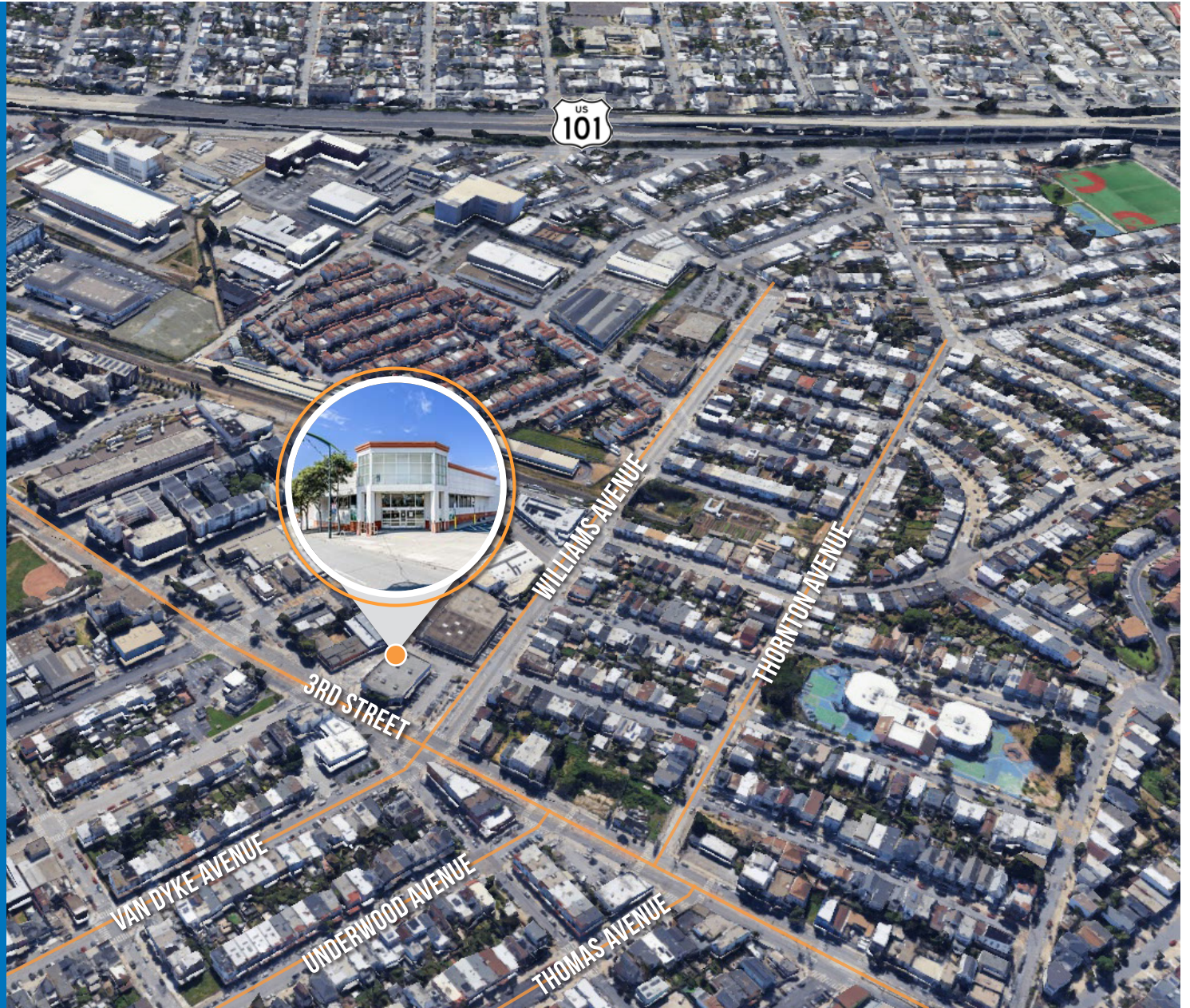
01 MIN to 3rd St Muni
10 MIN to Palou Ave Muni
21 MIN to Hilltop Parl



07 MIN to Visitacion Valley
12 MIN to Potrero Hill
14 MIN to Mission District



03 MIN to 101 On-Ramp
10 MIN to 280 On-Ramp
12 MIN to 80 On-Ramp



5300 3RD STREET

NEARBY AMENITIES

- 1..... Craftsman and Wolves the Den
- 2..... Asados El Primo
- 3..... Cemitas El Puebla
- 4..... McDonald's
- 5..... City Lunch Restaurant
- 6..... Sco's
- 7..... Frank Grizzly's
- 8..... Martin Luther King Jr Pool
- 9..... MY-Malaysian Food
- 10..... Laughing Monk Brewing
- 11..... Las Palmas
- 12..... Butchertown Coffee
- 13..... Gumbo Social
- 14..... Sabbis Groceries
- 15..... Lee's Food Market
- 16..... The Vegan Hood Chefs
- 17..... Hilltop Park (Sundial Park)
- 18..... B&J Burgers
- 19..... Montecristo
- 20..... Foods Co.





HILLTOP PARK



LAUGHING MONK BREWING



FRANK GRIZZLY'S



CRAFTSMAN AND WOLVES - THE DEN



B&J BURGERS

5300 3RD
STREET



Corp. Lic. 01112906
www.tcpre.com

ETHAN MANN

C 415.990.9127

ethan@tcpre.com DRE # 0223262

GEORGE FARLEY

C 415.994.5767

george@tcpre.com DRE # 0223755

This document has been prepared by Touchstone Commercial Partners for advertising and general information only. Touchstone Commercial Partners makes no guarantees, representations or warranties of any kind, expressed or implied, regarding the information including, but not limited to, warranties of content, accuracy and reliability. Any interested party should undertake their own inquiries as to the accuracy of the information. Touchstone Commercial Partners excludes unequivocally all inferred or implied terms, conditions and warranties arising out of this document and excludes all liability for loss and damages arising there from. This publication is the copyrighted property of Touchstone Commercial Partners and/or its licensor(s). ©2025. All rights reserved.