



### Scan For Details

60,000 Sqft Industrial Park:  
3,775 -15,000 Sqft Spaces Available



# District on Main.



COVER 1

INDEX 2

MAP 3

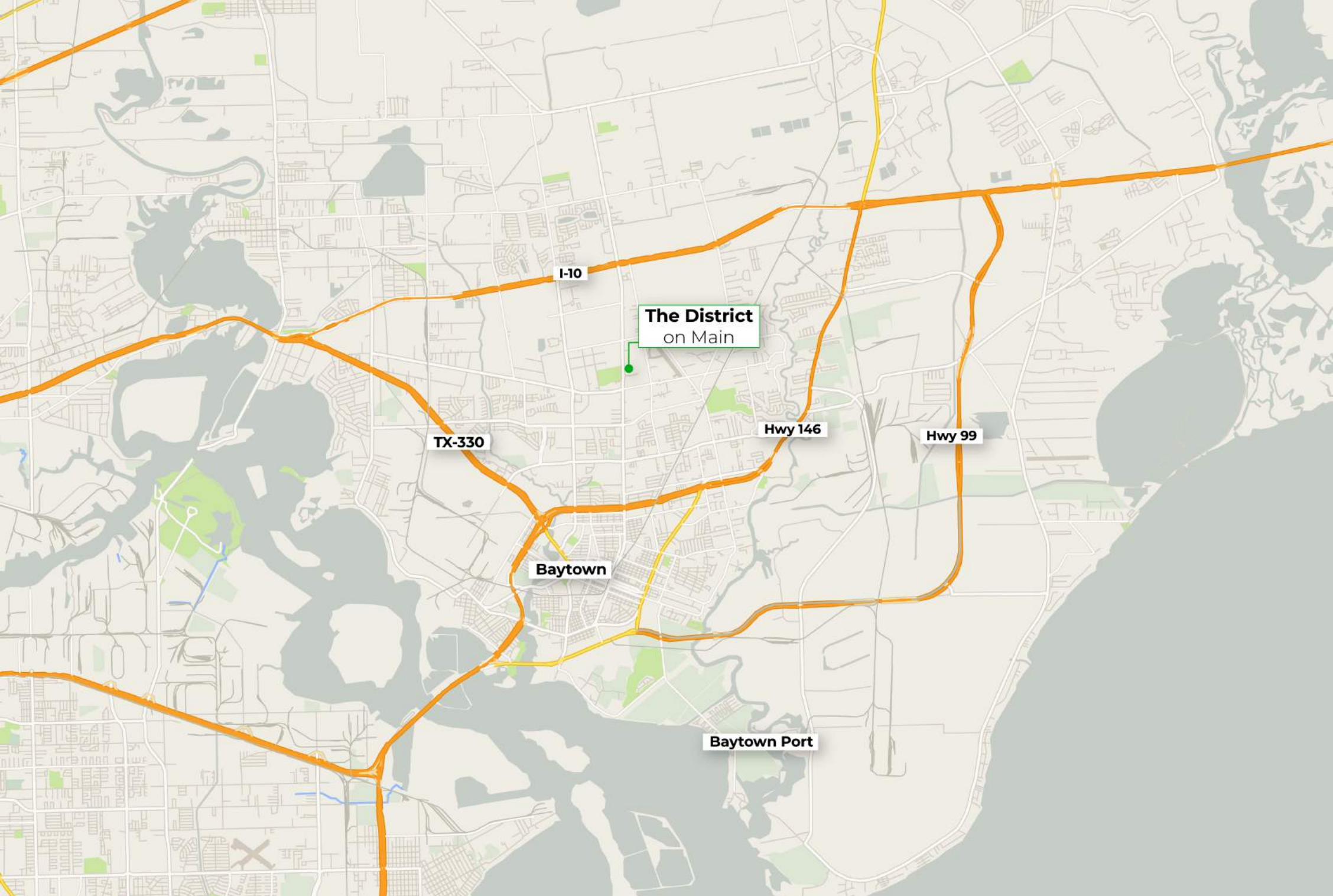
ABOUT 4

FLOORPLANS 5

SITEPLAN 6

LEASING TEAM 7

# CONTENTS





# About

Welcome to District on Main Industrial Park, your premier destination for industrial leasing in Baytown, Texas. Strategically situated just a mile away from the bustling I-10 corridor, this state-of-the-art industrial park offers unparalleled convenience and accessibility for businesses of all sizes.

Spanning an impressive 60,000 square feet, District on Main Industrial Park comprises four distinct buildings, each boasting 15,000 square feet of versatile industrial space. Whether you require 3,750 square feet or a spacious 15,000 square feet, we have the perfect solution to accommodate your business needs.

This cutting-edge industrial park is currently under construction, with completion slated for January 2025. Be among the first to secure your spot in this dynamic business hub by leasing now. Benefit from the advantages of a brand-new facility, tailored to meet the demands of modern industrial operations.

With its central location in the heart of Baytown, you'll enjoy seamless access to major transportation routes, facilitating effortless logistics and connectivity.

## Leasing Information

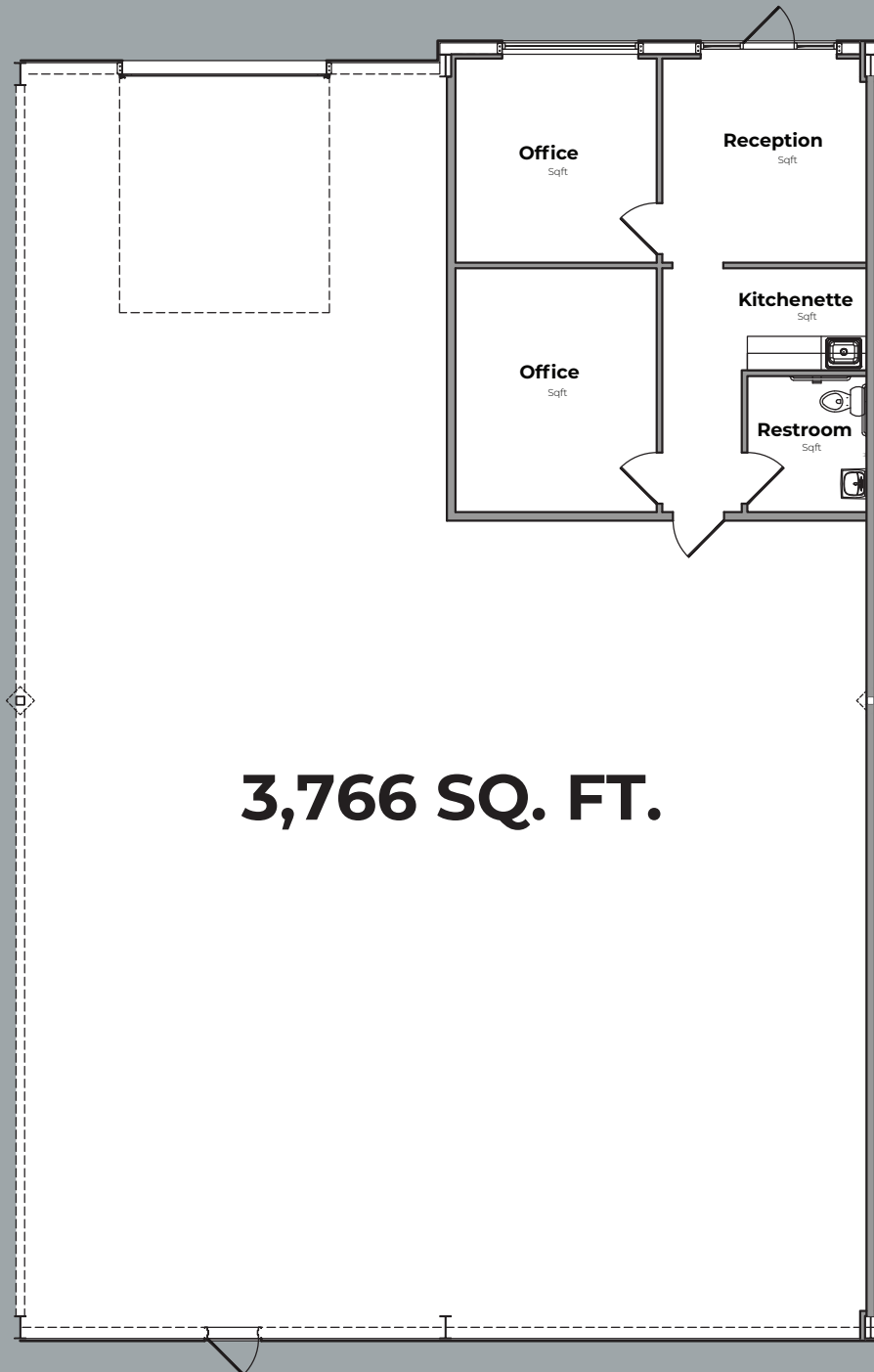
Lease Terms:	<b>5-10 Years</b>
Rental Rate:	<b>\$16.50 / SF/YR + NNN</b>
Space Use:	<b>Flex / Industrial</b>
Availability:	<b>January 2025</b>

# Build To Suit Solutions

Are you envisioning the perfect industrial space tailored to your unique requirements? Look no further than our building-to-suit options at District on Main Industrial Park.

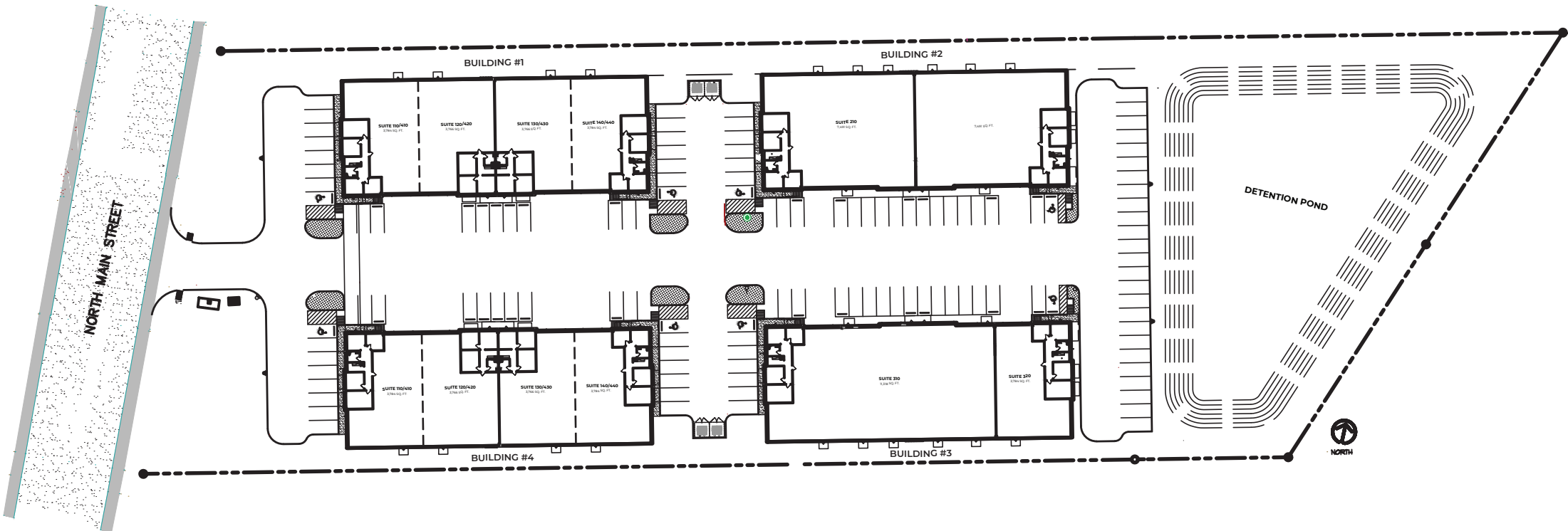
Our experienced team is ready to collaborate with you to design and construct a facility that precisely meets your specifications. From layout and design to amenities and features, we'll work closely with you every step of the way to ensure your vision becomes a reality.

Experience the ultimate in customization and efficiency with a building-to-suit solution in our premier industrial park.





# Site Plan





## Contact Us

**Jacob Dow**

*Listing Agent*

832.770.8865

[Jacob@DowRealEstateGroup.com](mailto:Jacob@DowRealEstateGroup.com)

[Facebook.com/jacobdowrealtor](https://www.facebook.com/jacobdowrealtor)

[Instagram.com/jacobdowrealtor](https://www.instagram.com/jacobdowrealtor)

*Reach Out Today  
for a Showing*

BROKERED BY  
**exp**<sup>®</sup>  
REALTY