

# 4550 Kearny Villa Rd

## San Diego CA 92123

FOR SALE

DANIEL FEFFERMAN  
BROKER-ASSOCIATE | FOUNDER  
DRE #02026109  
(619) 733-9038  
DANIEL@DEFINESDRE.COM  
WWW.DEFINEREALESTATE.COM





# LANDMARK CENTRE

Offered for sale is this 2,552 sq ft office condo in the heart of growing Kearny Mesa. Featuring 4 distinct units, this opportunity caters to owner-users, savvy investors, or a blend of both; perfect for those seeking to establish or expand their business footprint. Versatile layout offers flexibility for customization or lease opportunities and the ability to utilize SBA financing. Ideal location with growth potential. Landmark Centre features two buildings totaling approximately 32,000 on just over 2 acres with ample parking.

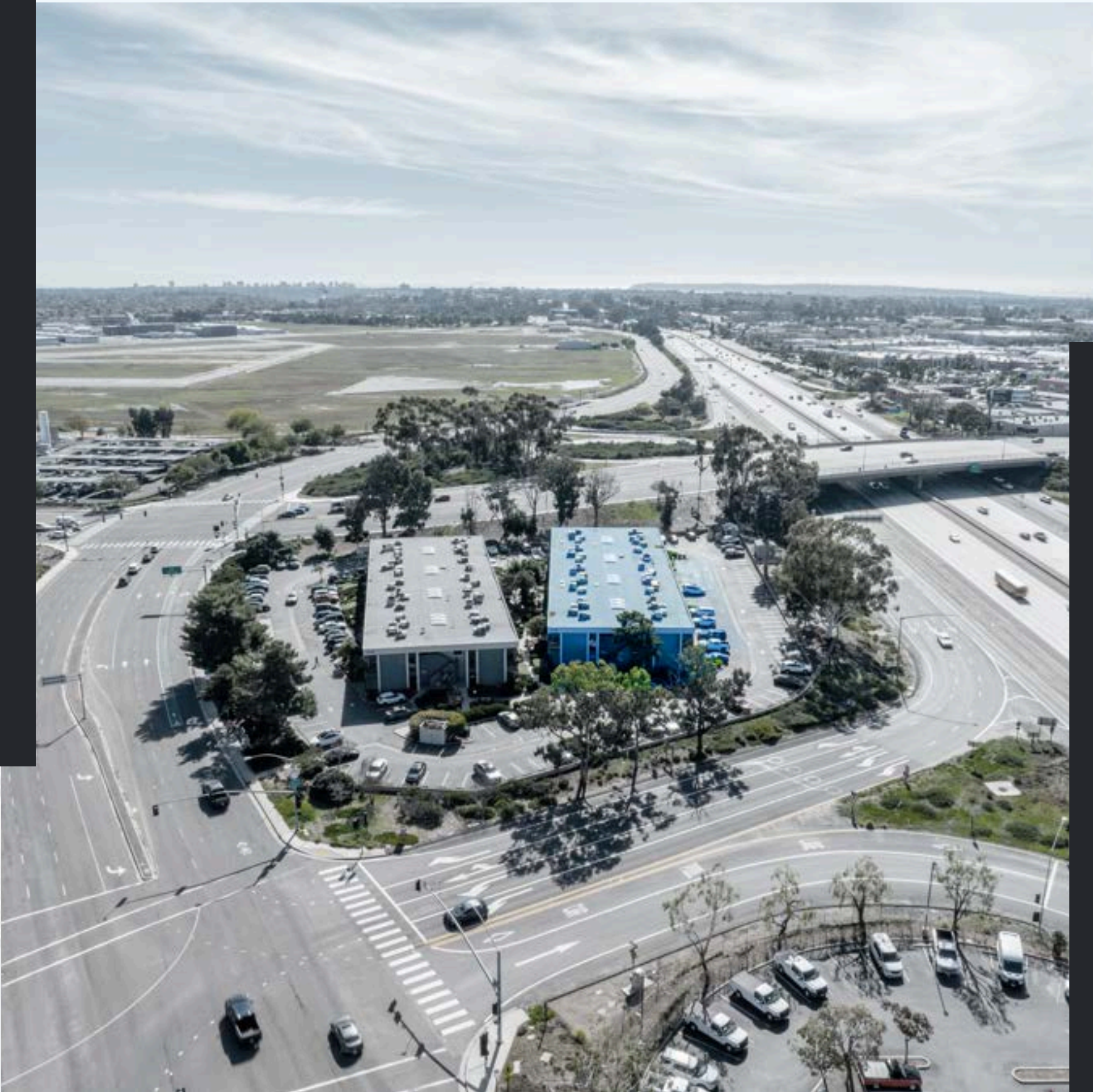




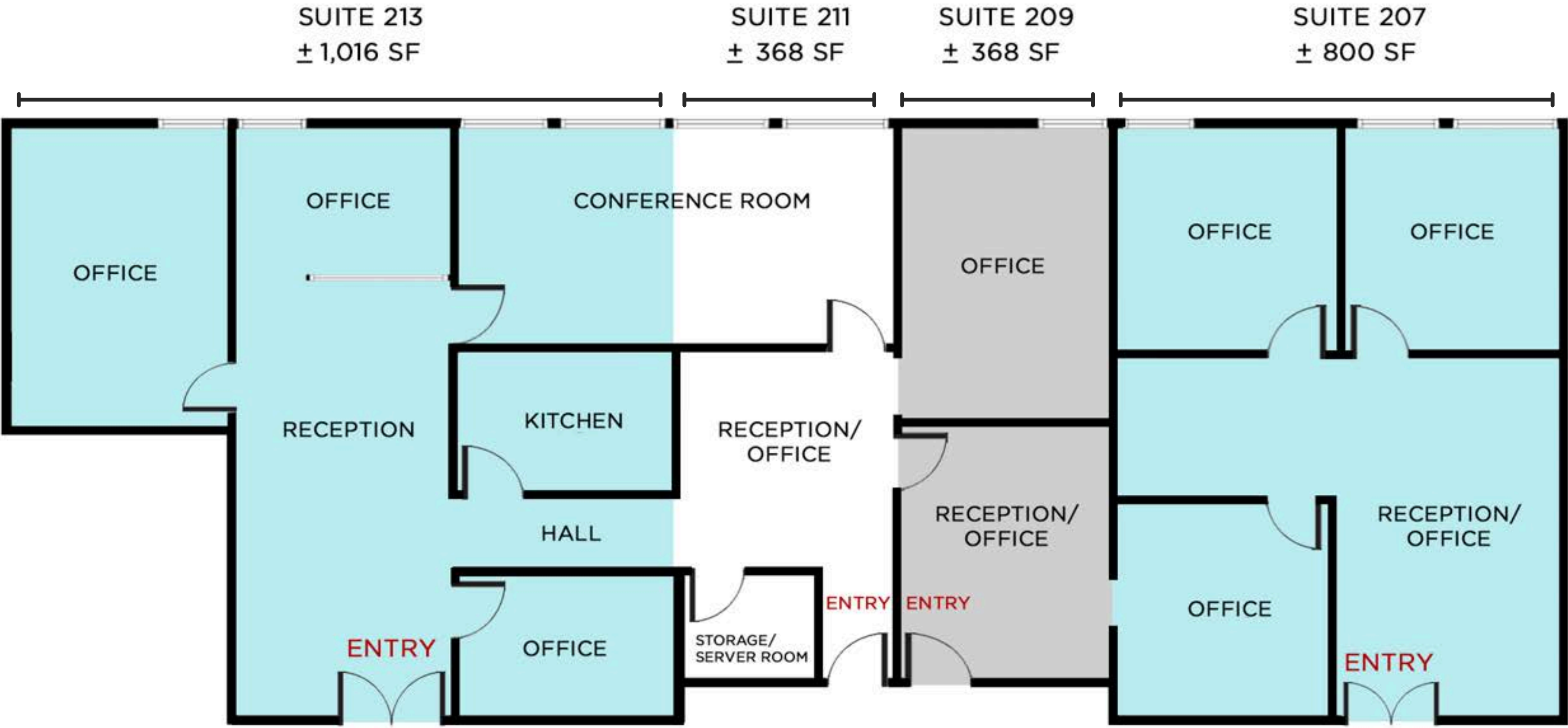


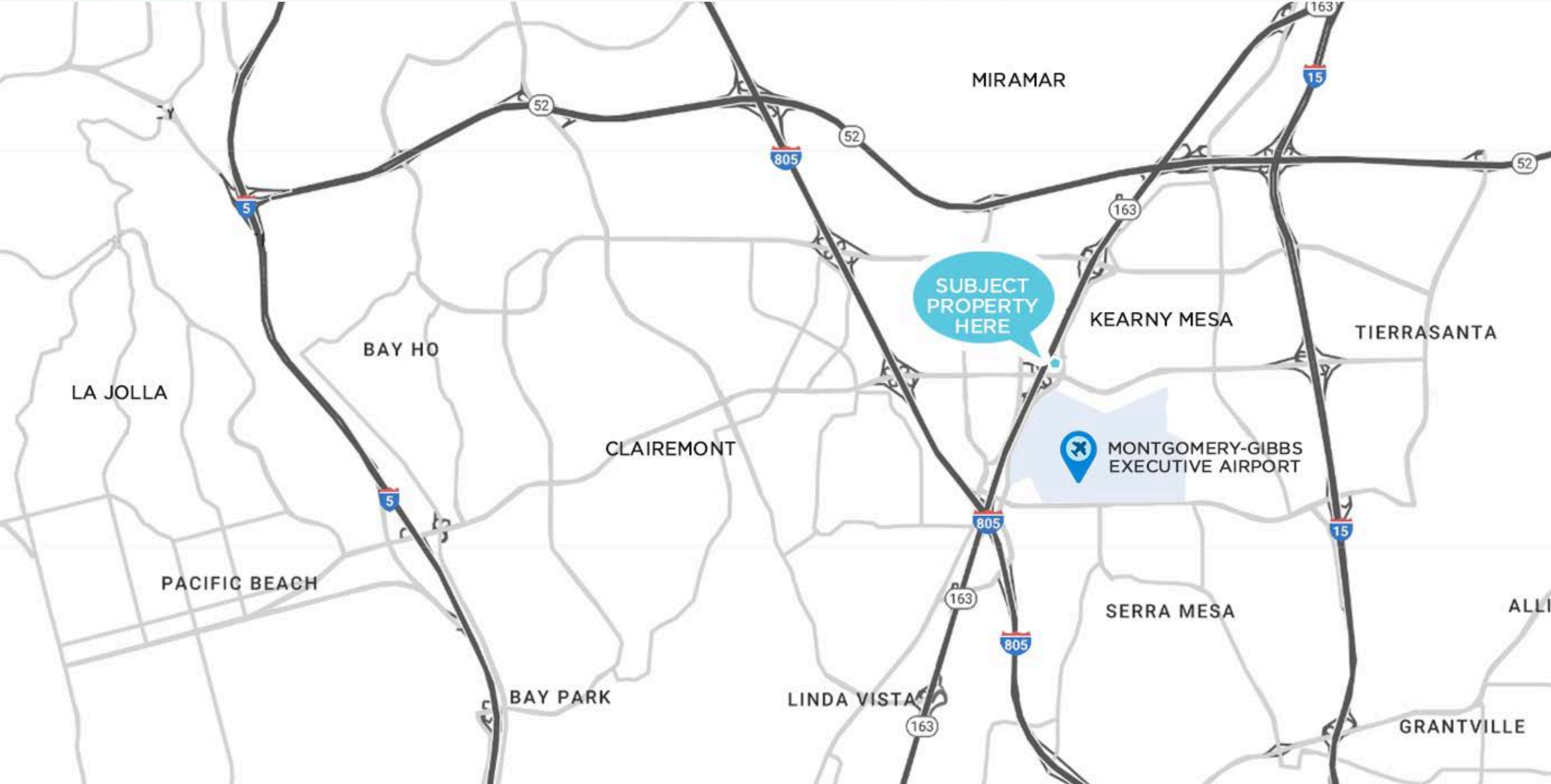
# PROPERTY HIGHLIGHTS

- Approximately 2,552 SF
- Units include: 207, 209, 211, 213
- Updated common areas including restrooms
- Second floor units
- Available fully furnished
- Upgraded HVAC
- Signage options
- Quick access to Highways 163, 15 & 805 freeways
- Central location in Kearny Mesa close to retail shopping, restaurants and other amenities

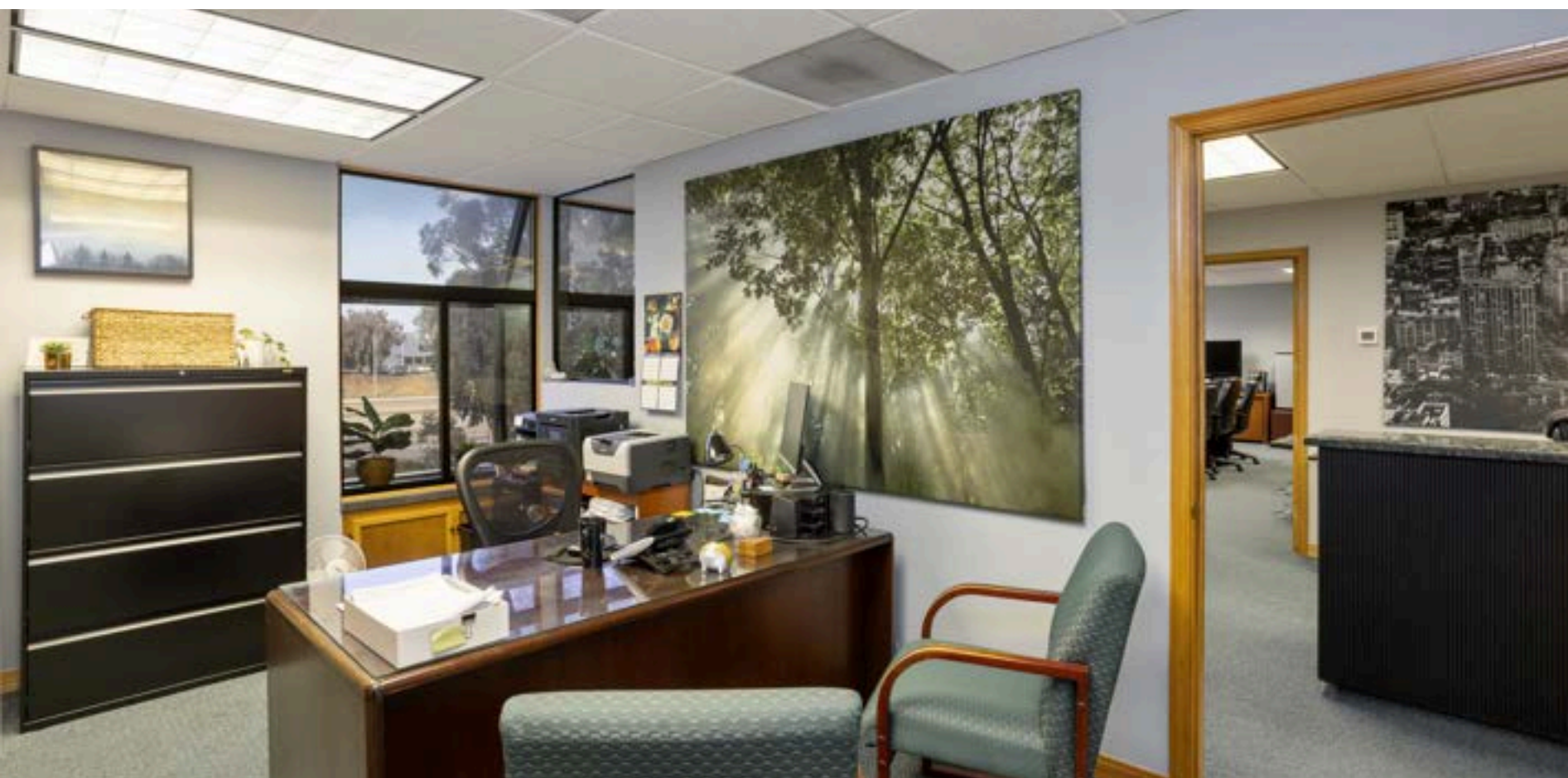




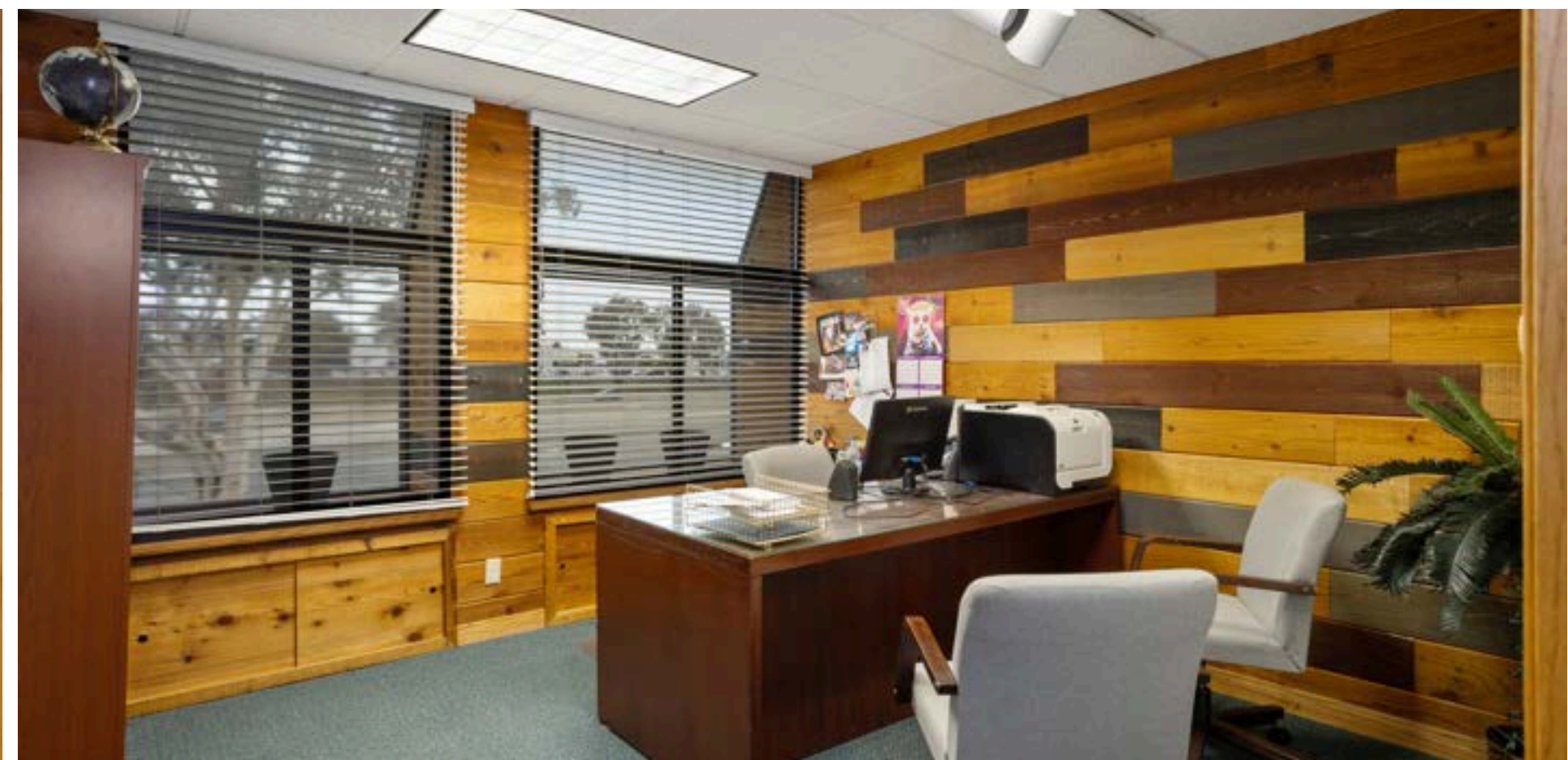
















# Contact

DANIEL FEFFERMAN  
Broker-Associate, Founder



## Address

4950 Waring Rd STE 5, San Diego, CA 92120



## Phone Number

(619) 733-9038



## Email

Daniel@DefineSDRE.com



## Website

[www.Definerealestate.com](http://www.Definerealestate.com)



## License

DRE #02026109