



6850 REGIONAL ST

*Office Suites Now Available in
Multi-Tenant Building in Dublin*

6850 REGIONAL ST, DUBLIN, CA 94568



*Flexible Multi-Tenant Office Suites
for Lease in Prime Location with
Easy Access to I-580/I-680 and
West Dublin BART*

Multi-tenant office suites available for lease

Flexible lease terms

Elevator served second floor

Ample on site, free parking

Close proximity to I-580 and I-680

Walkable to many retail amenities

Short walk to West Dublin BART

Sprinklers throughout

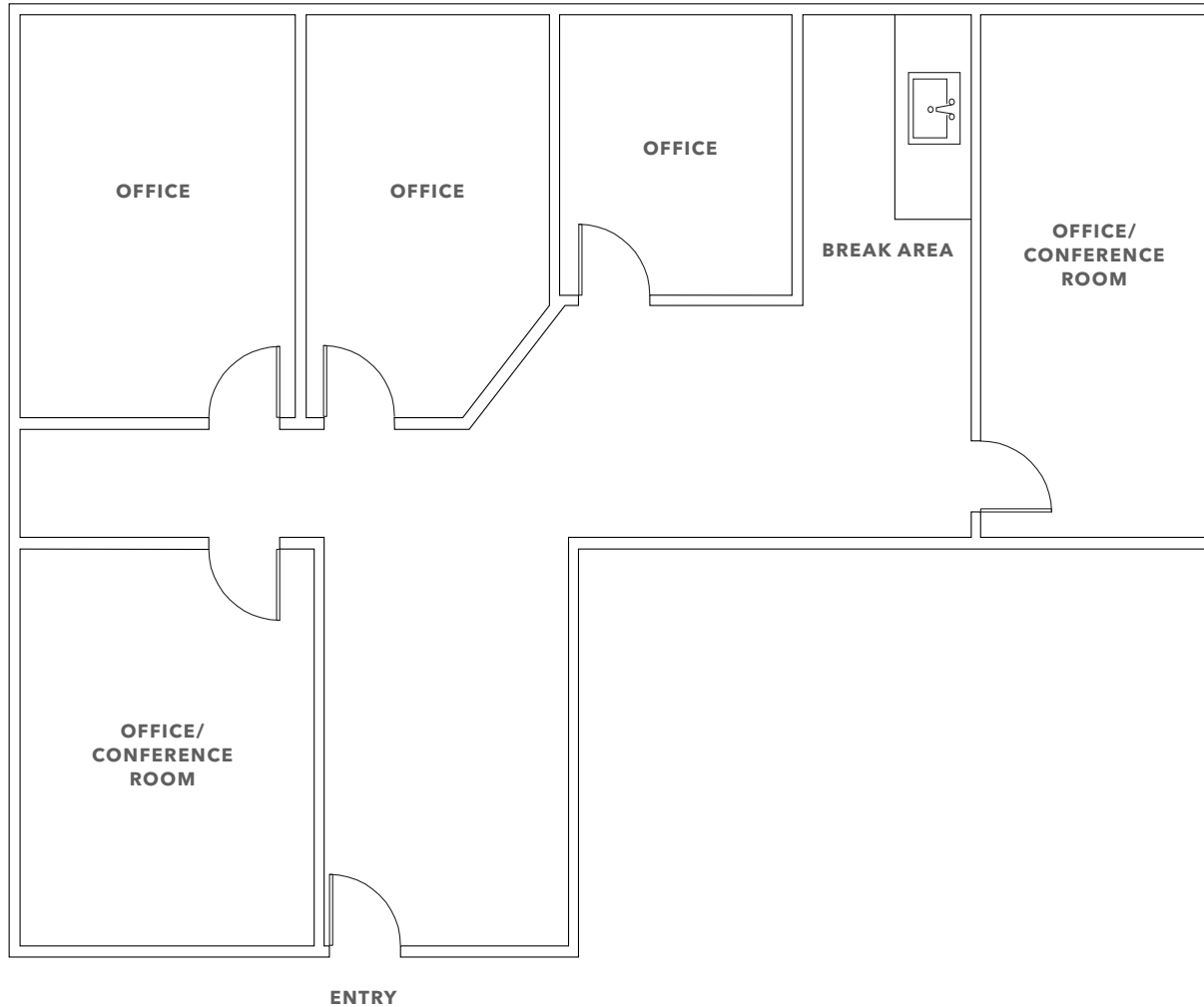
NOW

AVAILABLE

CALL

BROKER FOR LEASE RATE

SUITE 200



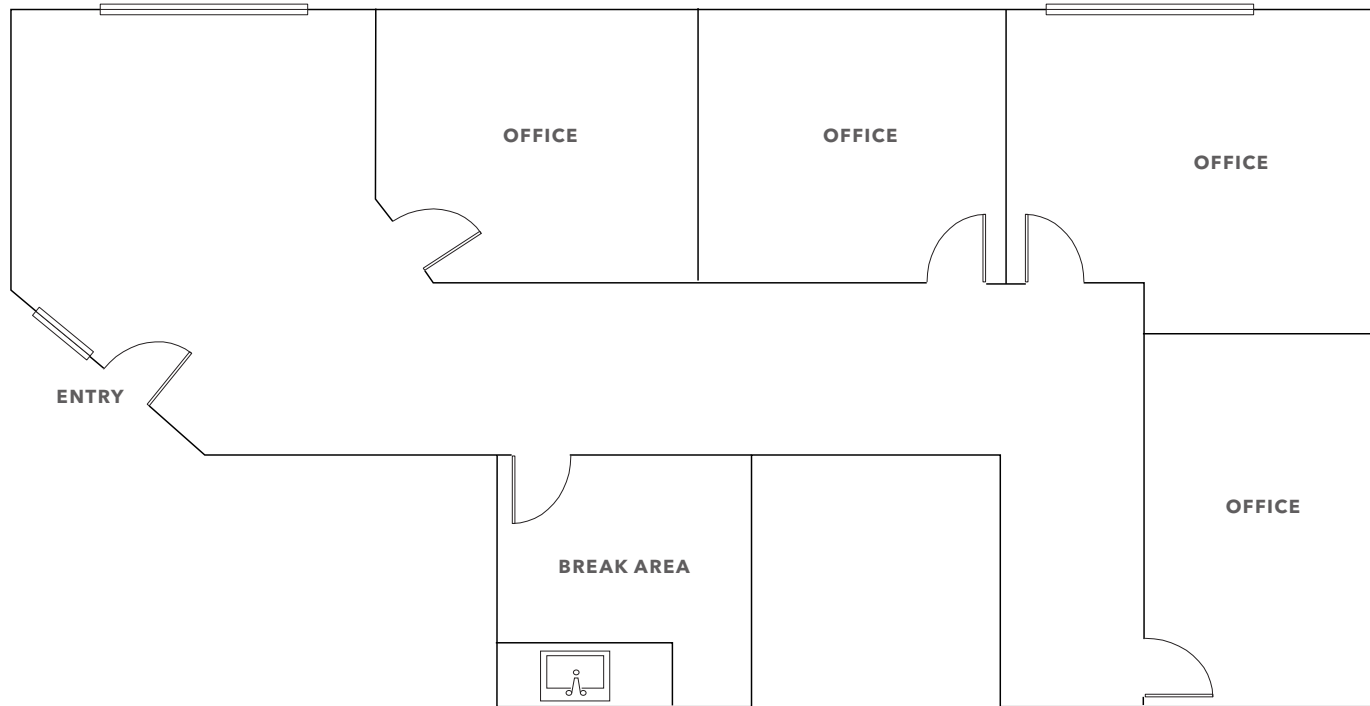
±1,650 RSF
AVAILABLE

CALL
BROKER FOR LEASE RATE

NOW
AVAILABLE

FLOOR PLAN NOT TO SCALE

SUITE 210



±1,500 RSF

AVAILABLE

CALL

BROKER FOR LEASE RATE

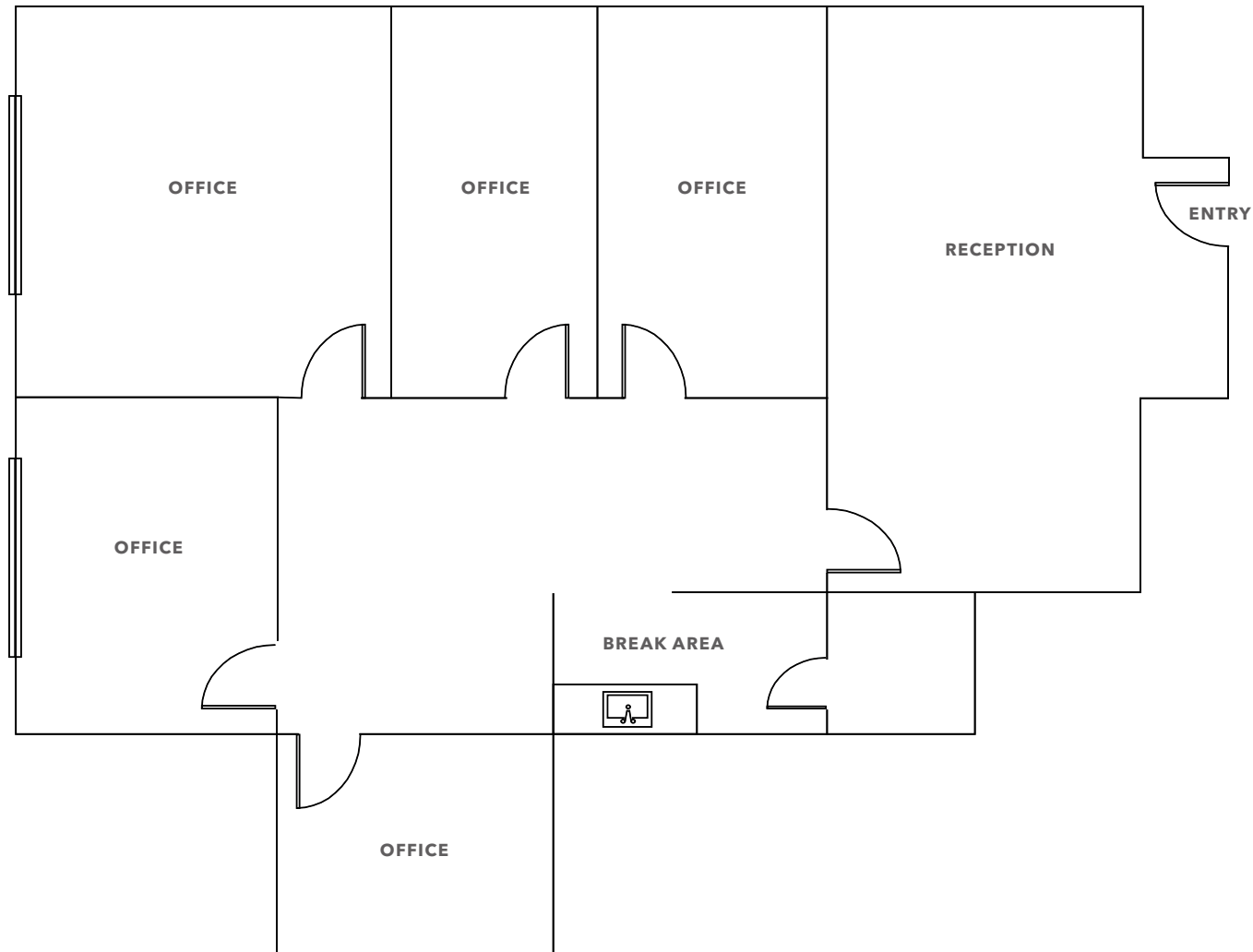
NOW

AVAILABLE

Can be combined with Suite 220 for
a total of 3,172 RSF.

FLOOR PLAN NOT TO SCALE

SUITE 220



±1,672 RSF

AVAILABLE

CALL

BROKER FOR LEASE RATE

NOW

AVAILABLE

Can be combined with Suite 210 for a total of 3,172 RSF.

FLOOR PLAN NOT TO SCALE

SUITE 260

±1,602 RSF

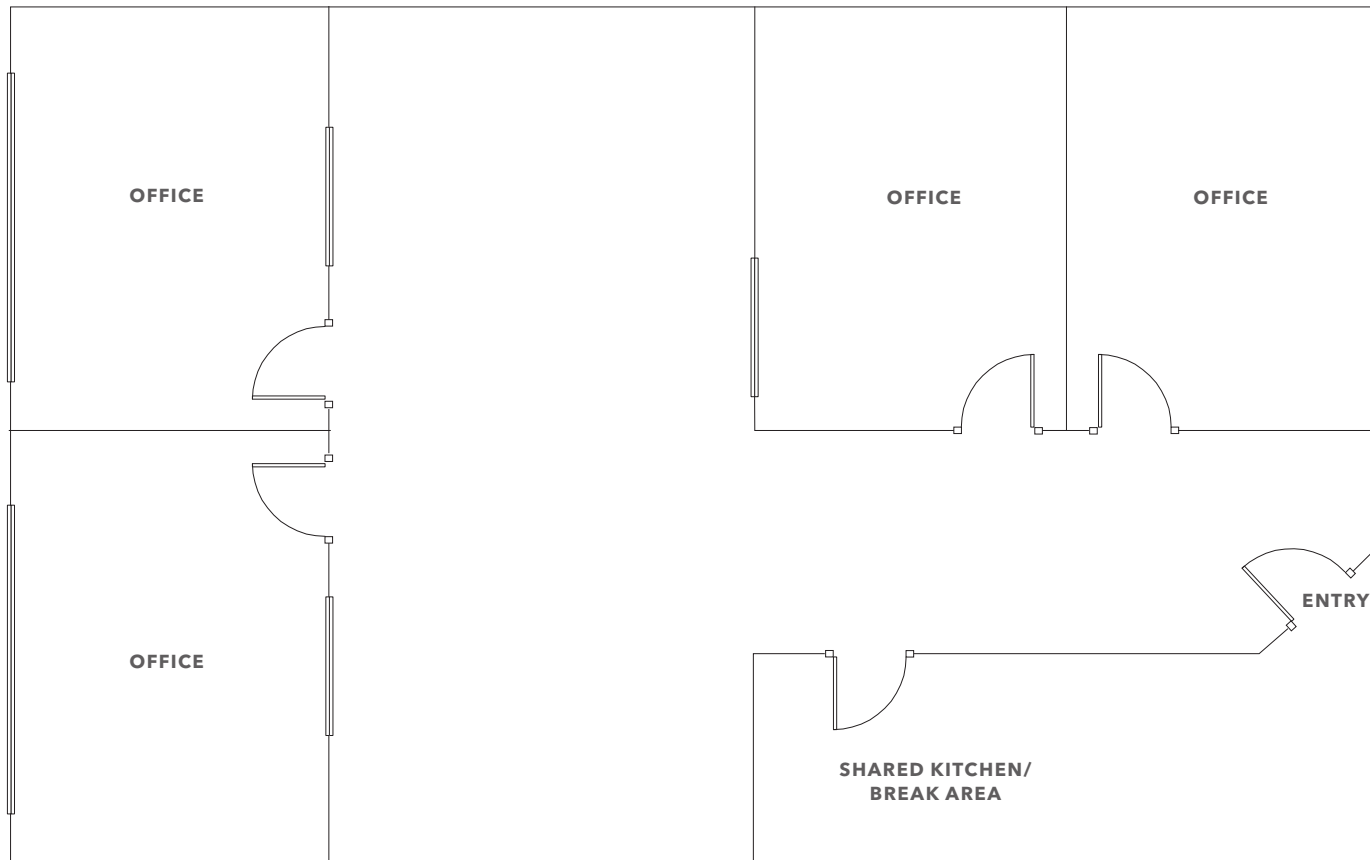
AVAILABLE

CALL

BROKER FOR LEASE RATE

NOW

AVAILABLE



FLOOR PLAN NOT TO SCALE



6850 REGIONAL ST

For more information on this property, please contact

WILL BALLOWE
 925.389.2499
 will.ballowe@kidder.com
 LIC N° 02053125

KIDDER.COM

This information supplied herein is from sources we deem reliable. It is provided without any representation, warranty, or guarantee, expressed or implied as to its accuracy. Prospective Buyer or Tenant should conduct an independent investigation and verification of all matters deemed to be material, including, but not limited to, statements of income and expenses. Consult your attorney, accountant, or other professional advisor. All Kidder Mathews designs are the sole property of Kidder Mathews. Branded materials and layouts are not authorized for use by any other firm or person.

