



## 1301 W Holmes Rd

Lansing, Michigan 48910

### Property Highlights

- Prime location with high visibility
- Ample parking for tenants and customers
- Well-maintained and inviting facilities
- Versatile layout for customizable use
- Convenient and accessible for patrons
- Flexible space options for retail use
- Modern amenities and infrastructure
- Proximity to major roadways for easy access
- Responsive management

### Offering Summary

Lease Rate:	\$7.50 SF/yr (NNN)
Building Size:	4,000 SF
Available SF:	4,000 SF
Lot Size:	18,886 SF

### For More Information

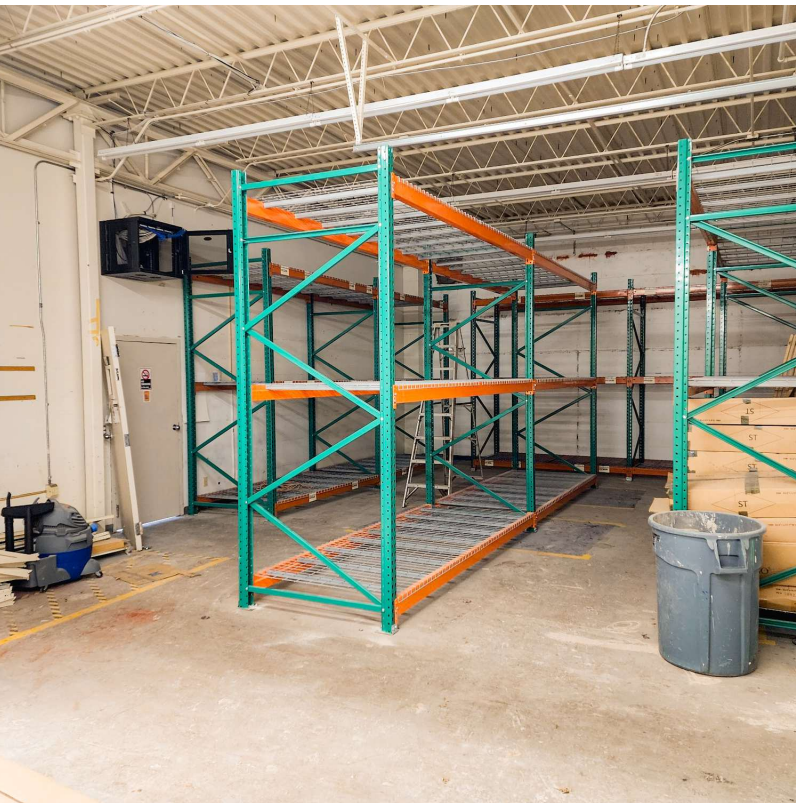


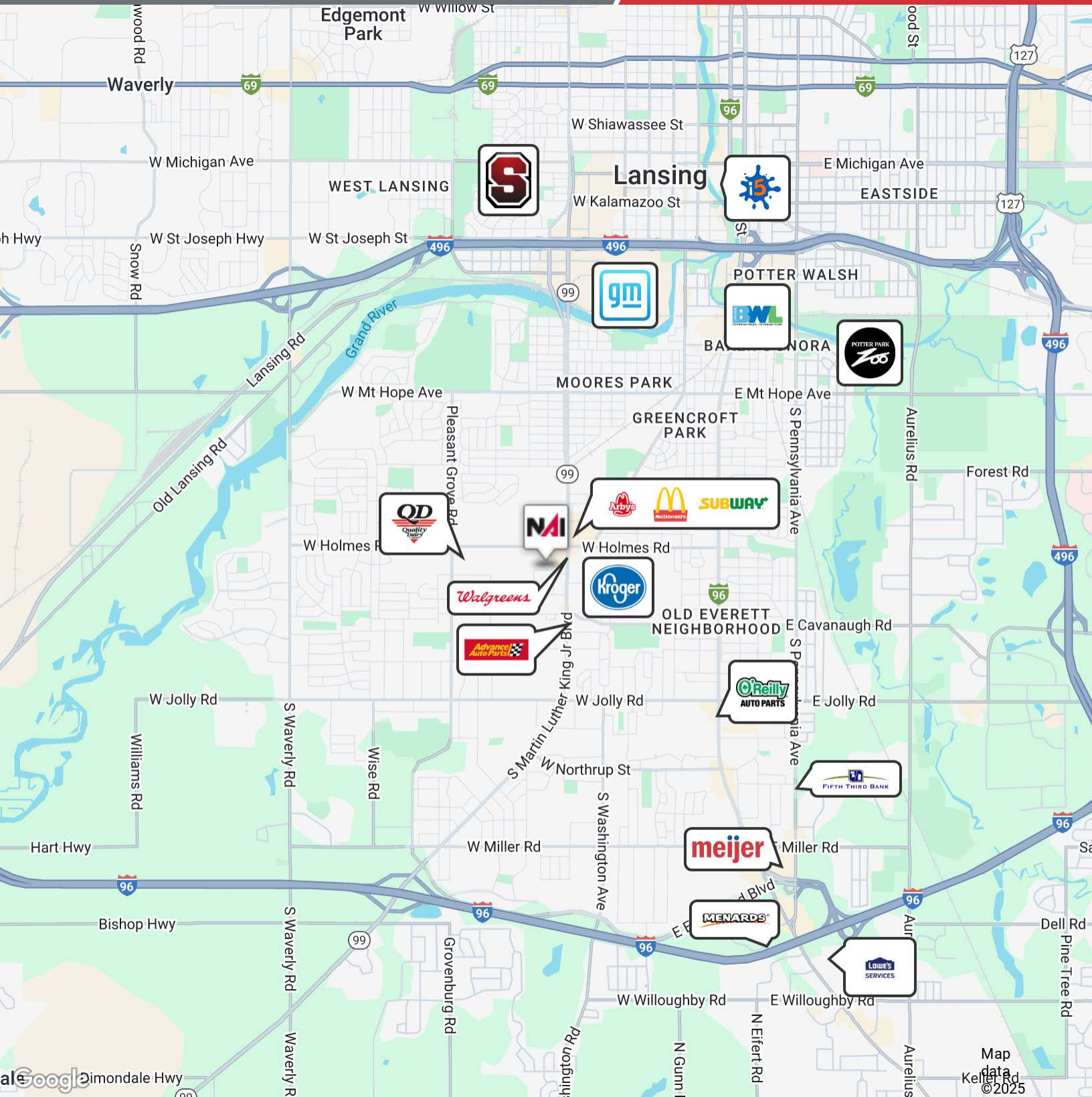
#### Scott Adams

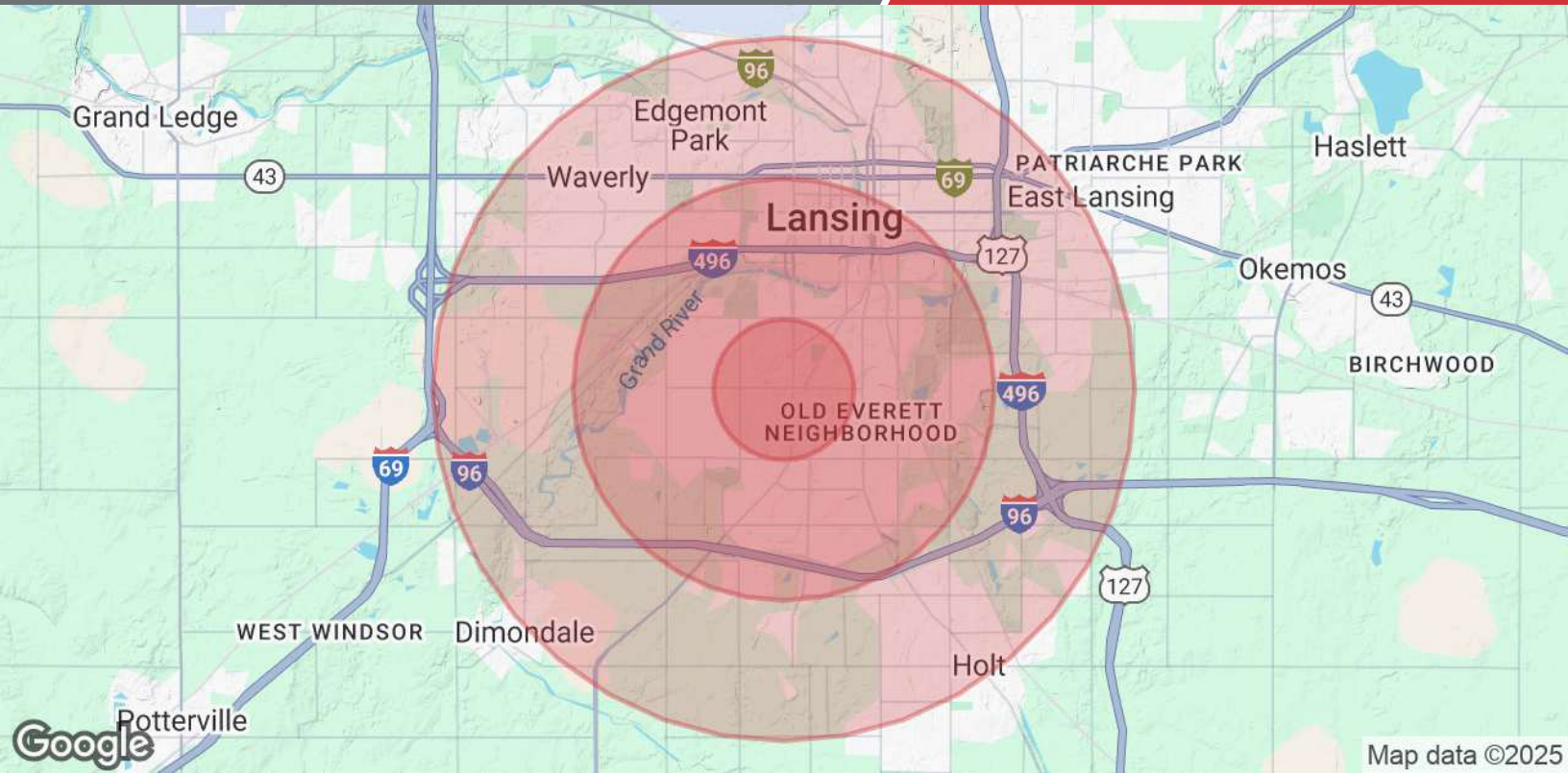
Commercial Advisor

O: 517 487 9222 | C: 517 881 5308

sadams@naimidmichigan.com







<b>Population</b>	<b>1 Mile</b>	<b>3 Miles</b>	<b>5 Miles</b>
Total Population	12,097	79,342	174,023
Average Age	39	39	38
Average Age (Male)	38	37	37
Average Age (Female)	40	40	39
<b>Households &amp; Income</b>	<b>1 Mile</b>	<b>3 Miles</b>	<b>5 Miles</b>
Total Households	5,356	34,906	73,544
# of Persons per HH	2.3	2.3	2.4
Average HH Income	\$58,054	\$65,141	\$74,408
Average House Value	\$125,942	\$144,497	\$160,734

Demographics data derived from AlphaMap