

MEDICAL OFFICE BUILDING

**Move In
Ready!**



**Fully Improved
1,617 SF
Medical Suite Available**

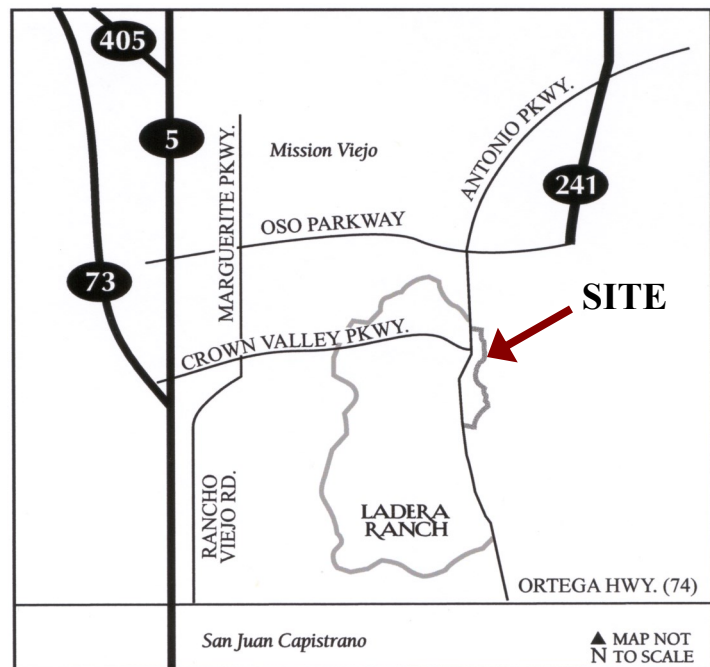
L A D E R A

CORPORATE TERRACE

777 CORPORATE DRIVE (Phase III)
CLASS "A" MEDICAL OFFICE BUILDING

- 1,617 SF move-in ready medical suite available now
- Separate doctor's entrance
- 4 exam rooms + 1 doctor's office
- Private restroom in suite
- Break room
- 23,000 SF Medical Office Bldg.
- Central, Elevator Served Lobby
- 6.67:1 Free Parking
- Walking distance to Food Court
- Campus Environment
- 75 Acre Site including Health Club, Child Care, Professional Offices

LADERA RANCH



ZCA INC.
ZUVICH CORPORATE ADVISORS

LUTZKY ASSOCIATES
DEVELOPMENT, LP

For further information, please contact:

ZUVICH Corporate Advisors, Inc.

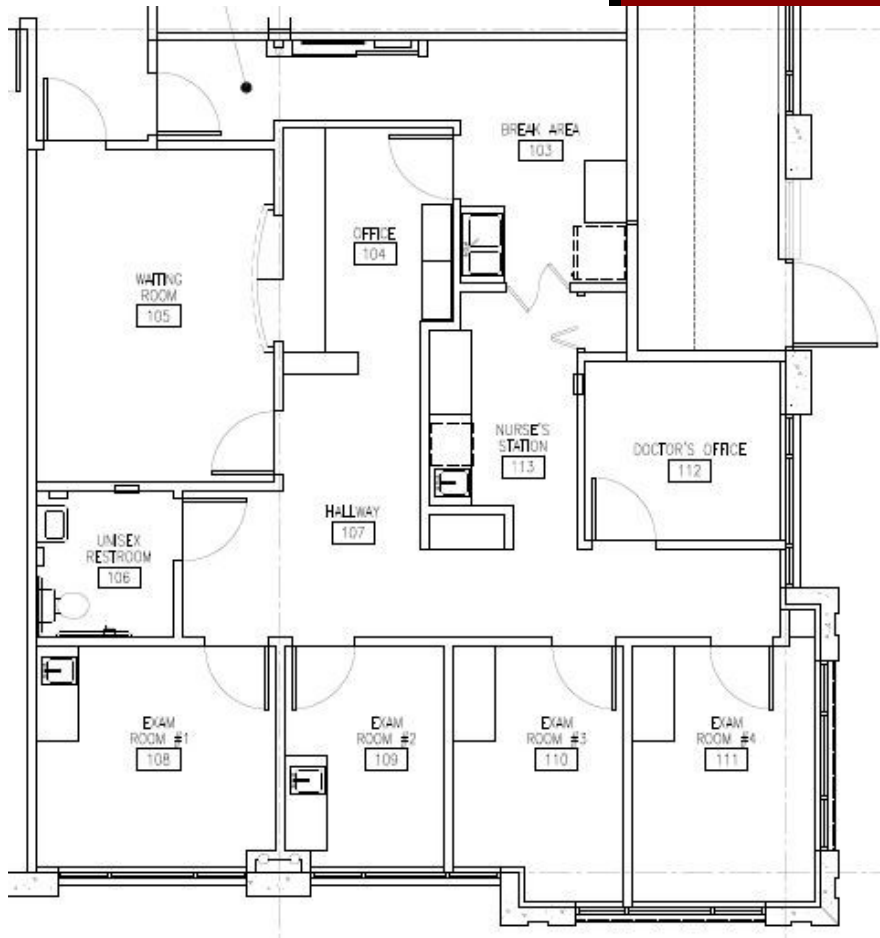
Mark Zuvich License #00983868

Trevor Sette License #02060723

Telephone (949)453-9900
551 Wald Irvine, CA 92618

No warranty or representation, expressed or implied, is made as to the accuracy of the information contained herein, and same is submitted subject to errors, omissions, change of price, rental or other conditions, withdrawal without notice, and to any special listing conditions, imposed by our principals.

LADERA RANCH



ZCA INC.
ZUVICH CORPORATE ADVISORS

For further information, please contact:
ZUVICH Corporate Advisors, Inc.

Mark Zuvich License #00983868

Trevor Sette License #02060723

Telephone (949)453-9900
551 Wald Irvine, CA 92618

No warranty or representation, expressed or implied, is made as to the accuracy of the information contained herein, and same is submitted subject to errors, omissions, change of price, rental or other conditions, withdrawal without notice, and to any special listing conditions, imposed by our principals.