

LEASE

2929 CLEVELAND AVENUE SW
2929 Cleveland Avenue SW Canton, OH 44707



PROPERTY DESCRIPTION

Located on one of South Canton's main corridors, this property has excellent potential for a variety of uses! Call for a showing today!

PROPERTY HIGHLIGHTS

- Next to Gionino's Pizza!
- 1,591 SF Remaining
- New parking lot
- Monument signage on Cleveland Ave. SW
- Terrific corner location
- Restaurant, retail, or office use.

OFFERING SUMMARY

Available SF:	1,591 SF
Lot Size:	0.55 Acres
Building Size:	3,603 SF

DEMOGRAPHICS	1 MILE	5 MILES	10 MILES
Total Households	1,086	49,832	129,228
Total Population	2,544	119,388	311,447
Average HH Income	\$34,587	\$42,821	\$55,842
Total Businesses	160	1,690	3,318
Total	2,11	33,625	57,325

Kristen Kantounatakis
Sales & Leasing Associate
O: (216) 292-3700 x22 | C: (330) 921-1234
kristen@emmcorealtygroup.com

Jeffrey Soclof, CCIM
President and Broker
O: (216) 292-3700 | C: (216) 857-2075
jeffrey@emmcorealtygroup.com



**COLDWELL BANKER
COMMERCIAL**
EMMCO REALTY GROUP

LEASE

2929 CLEVELAND AVENUE SW
2929 Cleveland Avenue SW Canton, OH 44707



Convenient corner parcel with highly-visible monument signage available.



View: Front entrance from rear



View: Rear exit and restroom access from front

Kristen Kantounatakis
Sales & Leasing Associate
O: (216) 292-3700 x22 | C: (330) 921-1234
kristen@emmc Realtygroup.com

Jeffrey Soclof, CCIM
President and Broker
O: (216) 292-3700 | C: (216) 857-2075
jeffrey@emmc Realtygroup.com



**COLDWELL BANKER
COMMERCIAL**
EMMCO REALTY GROUP

LEASE

2929 CLEVELAND AVENUE SW
2929 Cleveland Avenue SW Canton, OH 44707



Kristen Kantounatakis
Sales & Leasing Associate
O: (216) 292-3700 x22 | C: (330) 921-1234
kristen@emmc Realtygroup.com

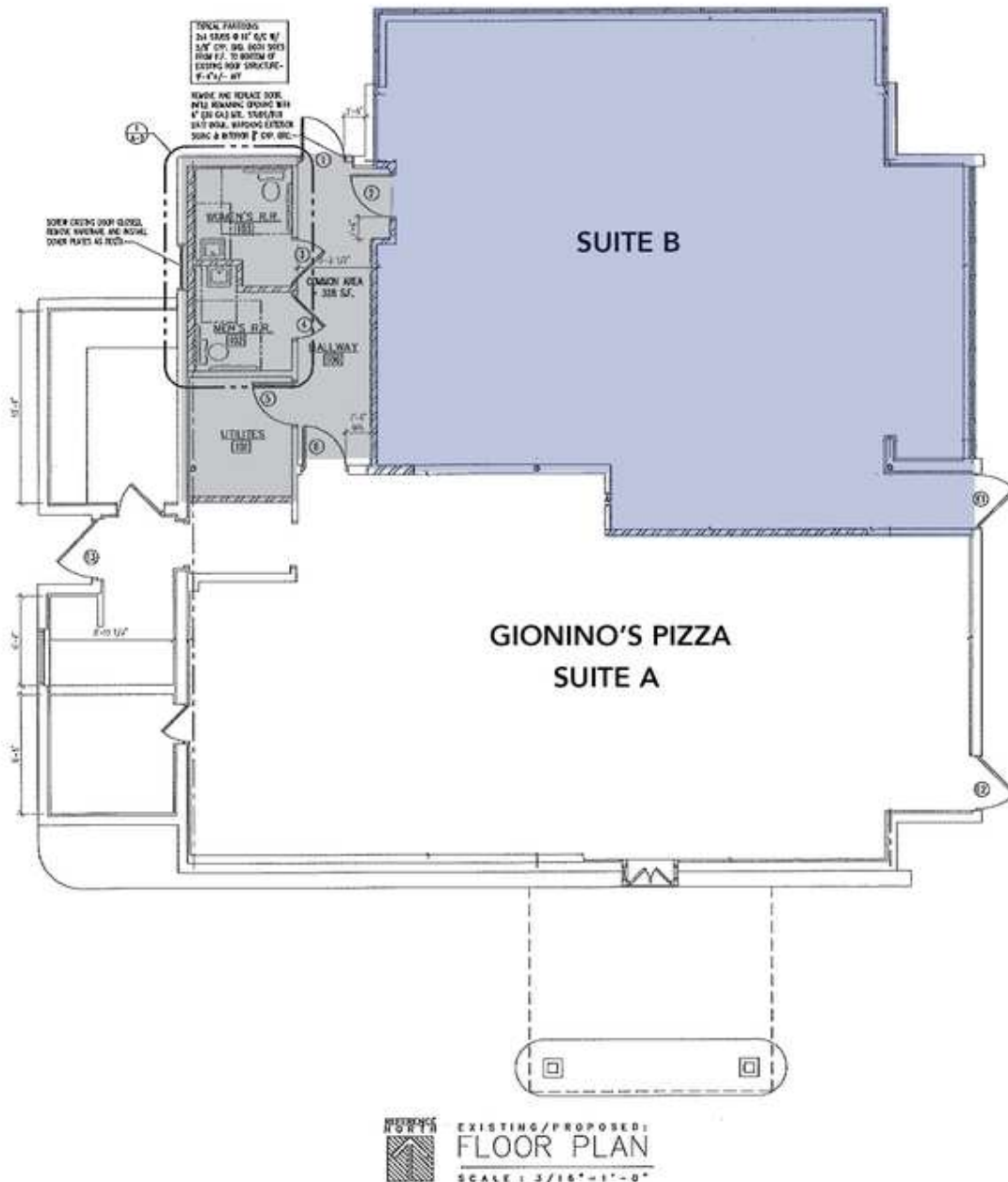
Jeffrey Soclof, CCIM
President and Broker
O: (216) 292-3700 | C: (216) 857-2075
jeffrey@emmc Realtygroup.com



**COLDWELL BANKER
COMMERCIAL**
EMMCO REALTY GROUP

LEASE

2929 CLEVELAND AVENUE SW
2929 Cleveland Avenue SW Canton, OH 44707



Kristen Kantounatakis
Sales & Leasing Associate
O: (216) 292-3700 x22 | C: (330) 921-1234
kristen@emmcurealtygroup.com

Jeffrey Soclof, CCIM
President and Broker
O: (216) 292-3700 | C: (216) 857-2075
jeffrey@emmcurealtygroup.com



**COLDWELL BANKER
COMMERCIAL**
EMMCO REALTY GROUP

LEASE

2929 CLEVELAND AVENUE SW
2929 Cleveland Avenue SW Canton, OH 44707



Kristen Kantounatakis

Sales & Leasing Associate

O: (216) 292-3700 x22 | C: (330) 921-1234

kristen@emmcorealtygroup.com

Jeffrey Soclof, CCIM

President and Broker

O: (216) 292-3700 | C: (216) 857-2075

jeffrey@emmcorealtygroup.com



**COLDWELL BANKER
COMMERCIAL**
EMMCO REALTY GROUP