



# SOUTH PARK GROUP

[www.southparkgroup.com](http://www.southparkgroup.com)



## FOR LEASE

### SECOND FLOOR CREATIVE OFFICE

7421 Beverly Boulevard, Suite 9B

Los Angeles, California 90036

Gorgeous 3 private office suite with a generous bull pen space featuring two assistant desks and waiting room area. Interior communal open air courtyard features a koi pond. The bright open space features covid friendly wall to wall windows in all office and spaces. All walkways into the space are open air exterior.

#### AVAILABLE SPACE

**Size:** Approximately 1,311 sqft

**Rate:** \$3.65 per sqft, Modified Gross

#### DAVID RAVANSHENAS

Tel. 323.782.1205

E. [david@southparkgroup.com](mailto:david@southparkgroup.com)

No. 01869082

#### STEVE RAVAN

Tel. 323.782.1262

E. [steveravan@southparkgroup.com](mailto:steveravan@southparkgroup.com)

No. 01869082

SOUTH PARK GROUP | 8322 Beverly Blvd., Suite 301 | Los Angeles, CA 90048

This information has been furnished by sources that we deem reliable, but for which we assume no liability. The information contained herein is given, in confidence, with the understanding that all negotiations pertaining to this property be handled through the submitting office. All measurements are approximate.

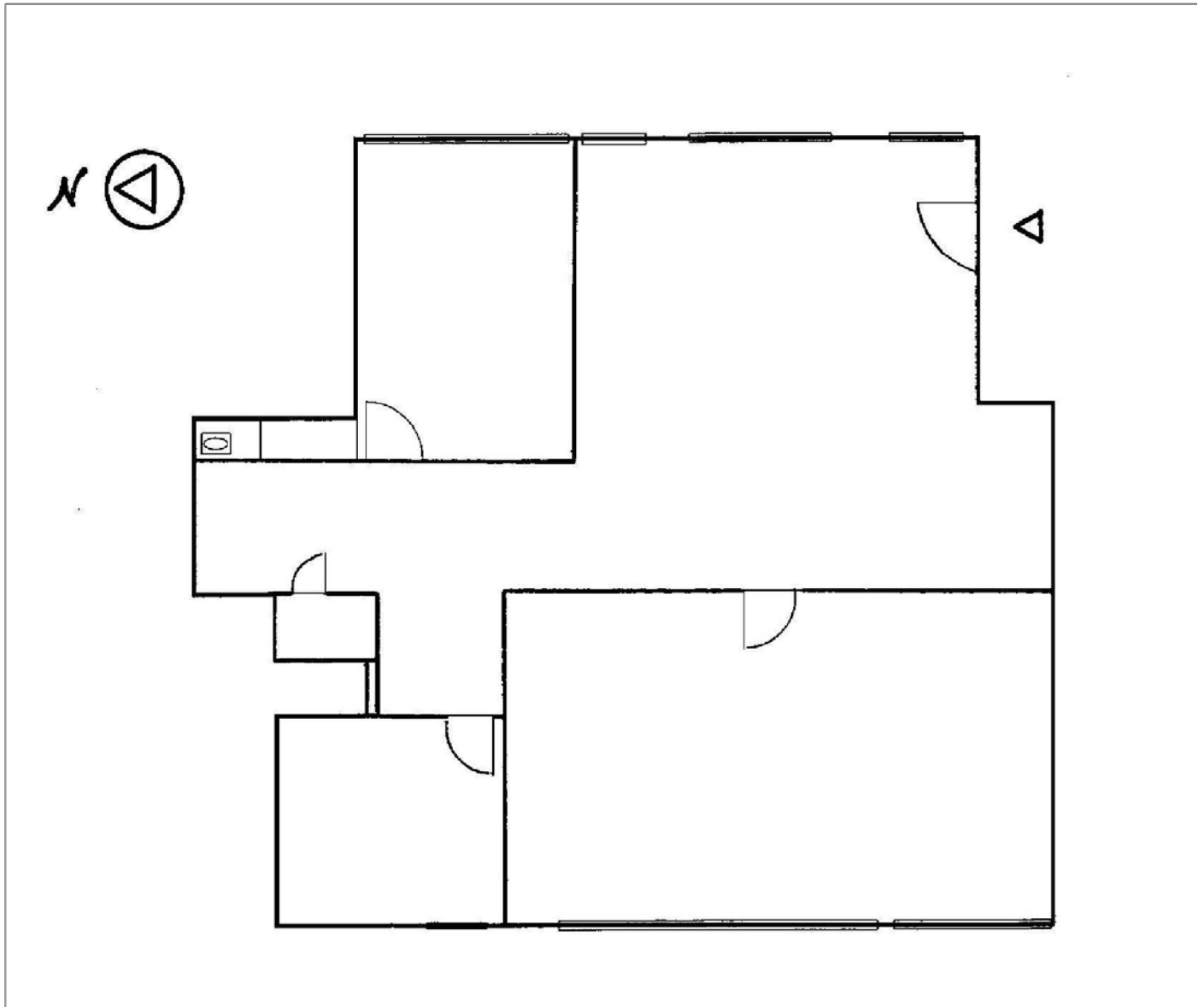


# SOUTH PARK GROUP

[www.southparkgroup.com](http://www.southparkgroup.com)

## FLOOR PLAN

7421 Beverly Blvd, Suite 9B, Los Angeles, California 90036



**SOUTH PARK GROUP | 8322 Beverly Blvd., Suite 301 | Los Angeles, CA 90048**

This information has been furnished by sources that we deem reliable, but for which we assume no liability. The information contained herein is given, in confidence, with the understanding that all negotiations pertaining to this property be handled through the submitting office. All measurements are approximate.



# SOUTH PARK GROUP

[www.southparkgroup.com](http://www.southparkgroup.com)

## INTERIOR

7421 Beverly Blvd., Suite 9B, Los Angeles, California 90036



**SOUTH PARK GROUP | 8322 Beverly Blvd., Suite 301 | Los Angeles, CA 90048**

This information has been furnished by sources that we deem reliable, but for which we assume no liability. The information contained herein is given, in confidence, with the understanding that all negotiations pertaining to this property be handled through the submitting office. All measurements are approximate.