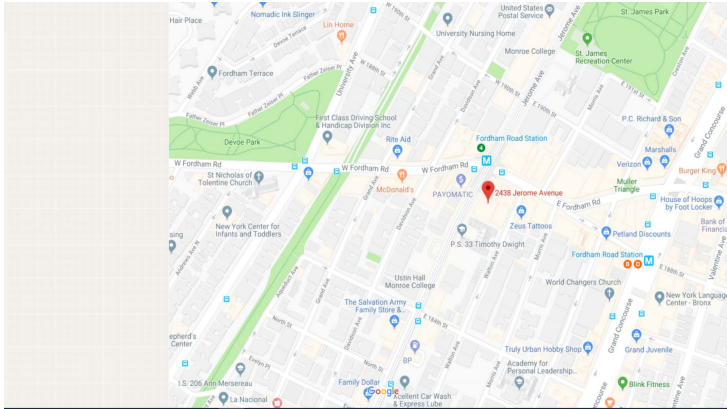
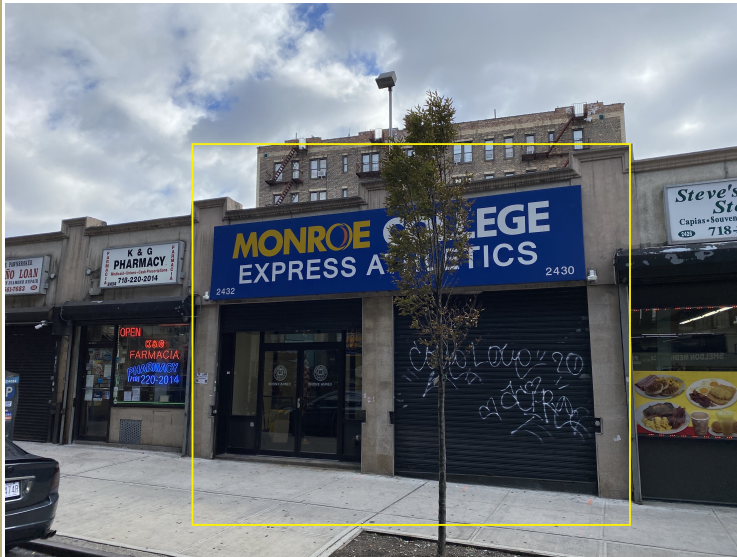


# 2430-2432 Jerome Avenue Bronx, NY 10468 Price: \$16,000 Per Month

COMMERCIAL



## PROPERTY HIGHLIGHTS

Prime Retail location, Off Fordham road  
6000 Sq. Ft. plus basement, 26 ft frontage  
\$16,000 per month

## Neighboring Tenants:

Bank Of America, Salvation Army  
Monroe College, PayOmatic,  
Rainbow, Clean rite, Army & Navy  
T-Mobile, Dunkin Donuts, AT&T  
Walgreens, PS 33, Save A thon, Twin  
Donut, Panda Express and many more on  
Fordham road.

# CENTURY 21

Commercial

Mizrahi Realty

We know the Boroughs

Samuel Mizrahi

Broker Associate

President Commercial Division

718-998-5700

[Samuelmizrahi3@gmail.com](mailto:Samuelmizrahi3@gmail.com)

<https://samuelmizrahicommercial.c21.com/>

©2018 Century 21 Real Estate LLC. All Rights Reserved. C21 Commercial® and CENTURY 21® are registered service marks owned by Century 21 Real Estate LLC. Century 21 Real Estate LLC fully supports the principles of the Fair Housing Act and the Equal Opportunity Act. Each office is independently owned and operated.