

Route 66 PADS

Route 66 PADS, Yukon, OK 73099



Eric Williams

ewilliams@mcgeecre.com
(405) 405-819-1638

McGee Commercial Real Estate

4324 Grant Blvd
Yukon, OK 73099

MCGEE COMMERCIAL REAL ESTATE

MCGEE COMMERCIAL REAL ESTATE

Presented by
McGee Commercial Real Estate

Price:

Lot's are priced between \$10/psf - \$18/psf and can be divided depending upon needs.

Kilpatrick Turnpike Lots (West Side)

Outparcel 3 – 1.44 AC / \$18/PSF

Outparcel 4 – 1.91 AC / \$18/PSF

Outparcel 8 – 3.27 AC / \$18/PSF

Total Available – 6.62 AC

East Side

Outparcel 6D – 1.59 AC / \$12 PSF

Outparcel 7 - 2.74 AC / \$12 PSF

Total Available - 4.33 AC

Lot 6A – SOLD 'Medical'

Lot 6B – SOLD 'Office'

Lot 6C – SOLD 'Medical'

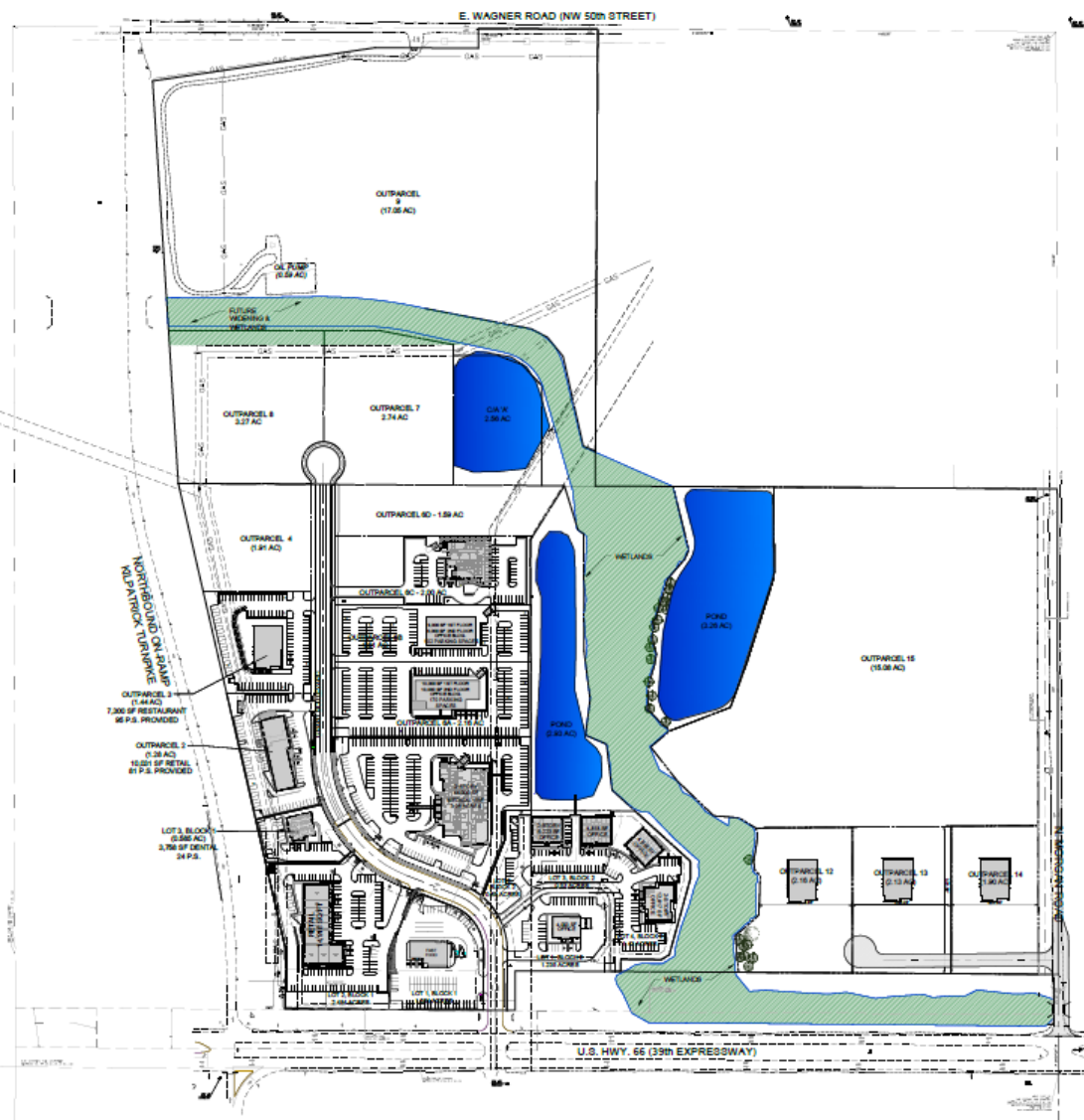
Located off the Kilpatrick Turnpike and NW 39th (Rt 66). Route 66 Landing is a Class A development anchored by Total Healthcare Partners. Kilpatrick Turnpike reports traffic counts exceeding 40,000, while NW 39th reports counts over 17,000.

Come join the excitement!

ROUTE 66 LANDING

OVERALL SITE CONCEPT
YUKON, OK

CONCEPT ILLUSTRATION
DRAWING PREPARED APRIL 16, 2024



ORIGINAL PAPER SIZE 30X42





