





## PROPERTY INFORMATION

### SF\*

2,520 Rentable SF

- 1,754 SF on 1st Floor
- 766 SF on 2nd Floor
- Additional Storage in Basement

**ZONING:** NC-(Neighborhood Commercial)

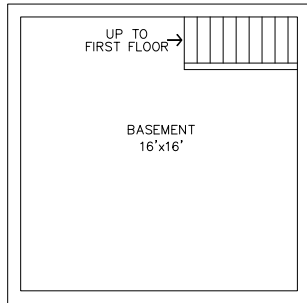
### FEATURES:

- 4 Offices on 1st floor, open layout on the 2nd floor
- 1 Conference room
- 1 Kitchen
- 1 Bathroom on each floor
- Hardwood floor, renovated conference and office rooms
- Private parking lot and street parking available

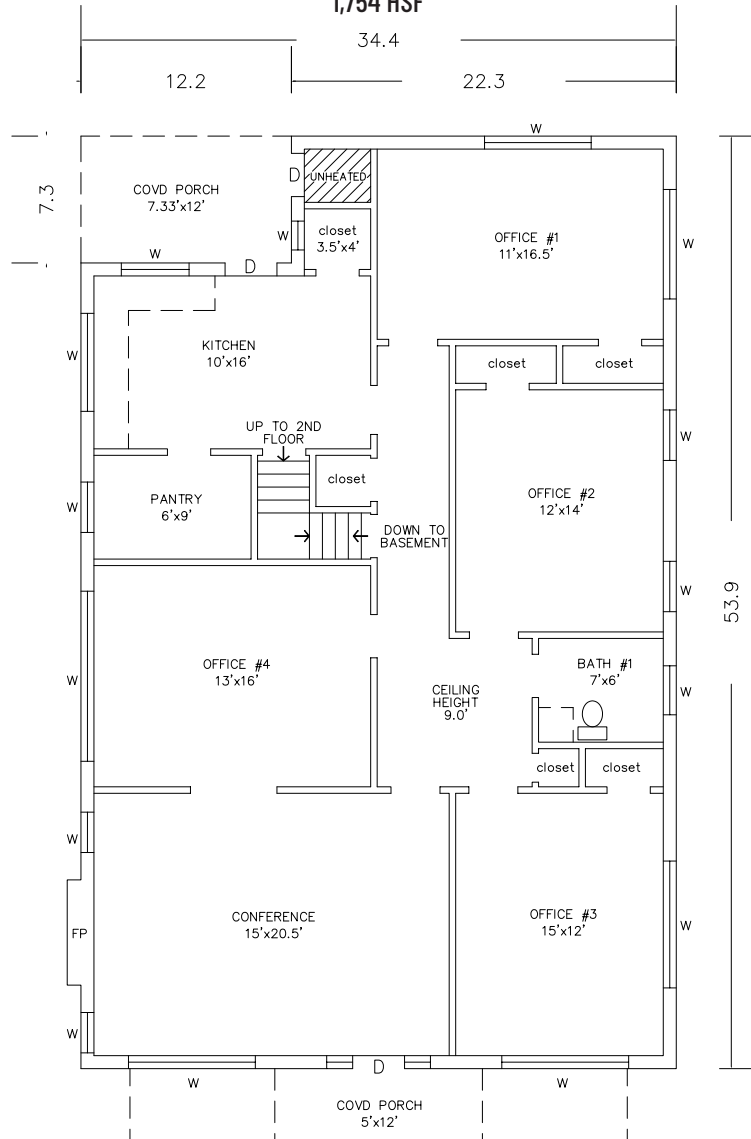
**AVAILABILITY:** Immediately

**LEASE RATE:** Call Broker for Details

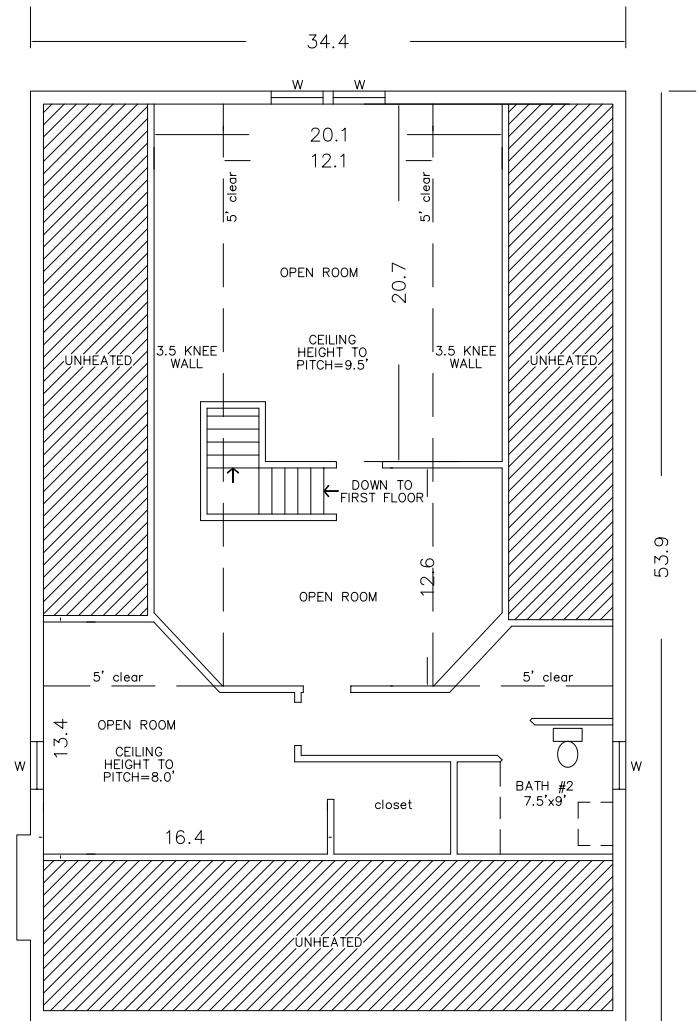
## BASEMENT 249 USF



## FIRST FLOOR 1,754 HSF



## SECOND FLOOR - 1,120 HSF CALC. ALLOWED - 766 HSF



**mecacommercial.com**

© 2025 Metro Realty, LLC. All rights reserved. Metro Realty, LLC fully supports the principles of the Fair Housing Act and the Equal Opportunity Act.  
\*The land acreage and/or building square footage was obtained from the County's Geographical Information System or other electronic resources. For exact square footage and/or acreage, we recommend that prior to purchase, a prospective Buyer/Tenant obtain a boundary survey or have the building measured professionally.

**KEVIN MITCHELL**  
c 704 317 9245  
kmitchell@mecacommercial.com



**ZACH DANIEL, CCIM**  
c 704 560 1192  
zdaniel@mecacommercial.com



**MECA**  
COMMERCIAL REAL ESTATE