

342 W GERMANTOWN PIKE MEDICAL OFFICE

EAST NORRITON, PA FOR SALE OR LEASE



PROPERTY DETAILS

- 1,763-9,244 of completely finished medical office space
- Move in Ready
- Convenient to Einstein Medical Center Montgomery
- Ample signage on Germantown Pike and on site signage
- Handicapped accessible
- Public transportation within walking distance
- Numerous amenities nearby: restaurants, banks, and hotels



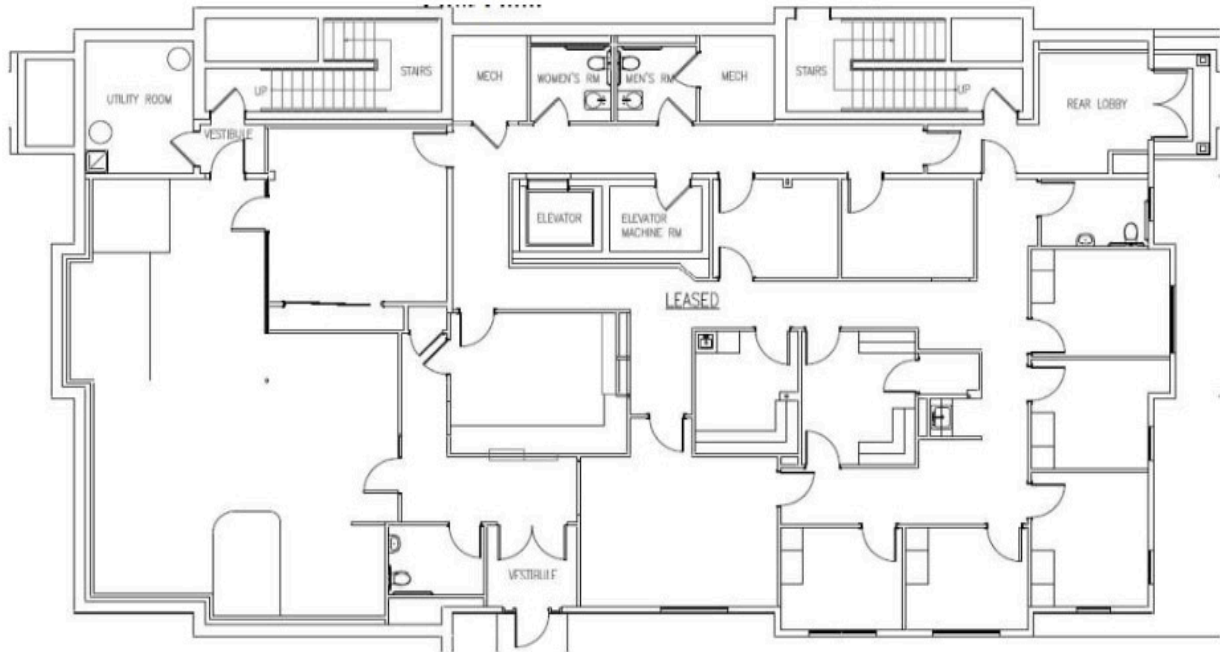
TOM BAILEY
O: 610.359.5810 EXT 17
C: 610.213.7334
Tom@vrpnow.com

This information has been obtained from sources deemed reliable, but has not been verified for accuracy or completeness. You should conduct a careful, independent investigation of the property and verify all information. Any reliance on this information is solely at your own risk.

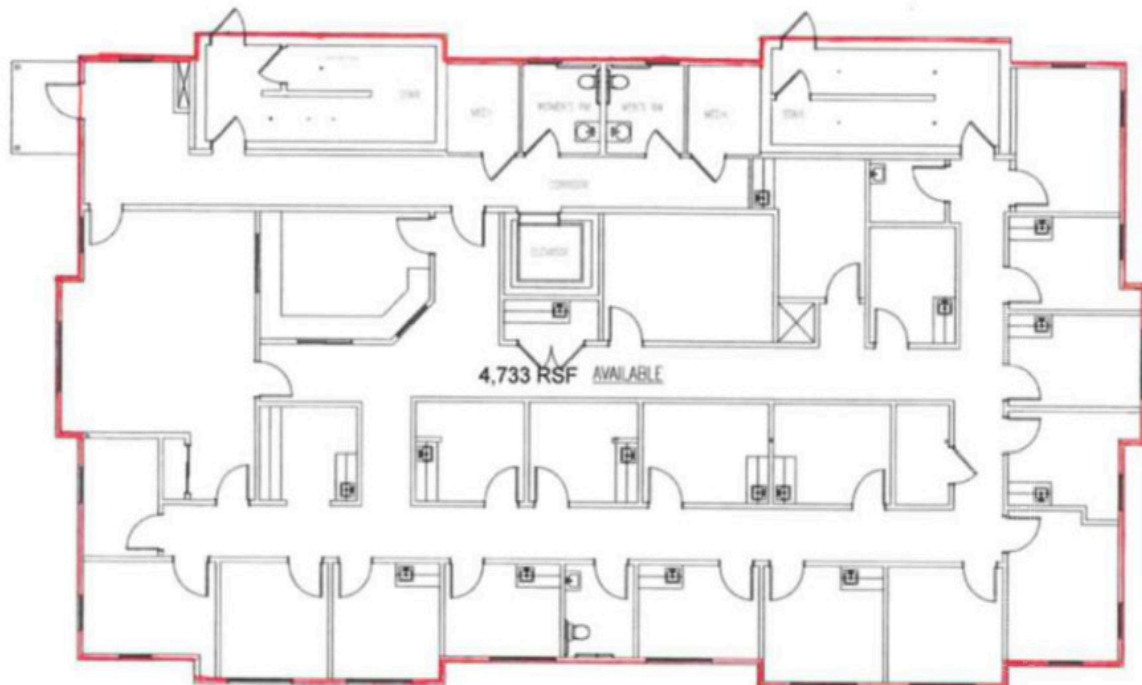
342 W GERMANTOWN PIKE MEDICAL OFFICE

EAST NORRITON, PA FOR SALE OR LEASE

First Floor



Second Floor



TOM BAILEY
O: 610.359.5810 EXT 17
C: 610.213.7334
Tom@vrpnw.com

This information has been obtained from sources deemed reliable, but has not been verified for accuracy or completeness. You should conduct a careful, independent investigation of the property and verify all information. Any reliance on this information is solely at your own risk.