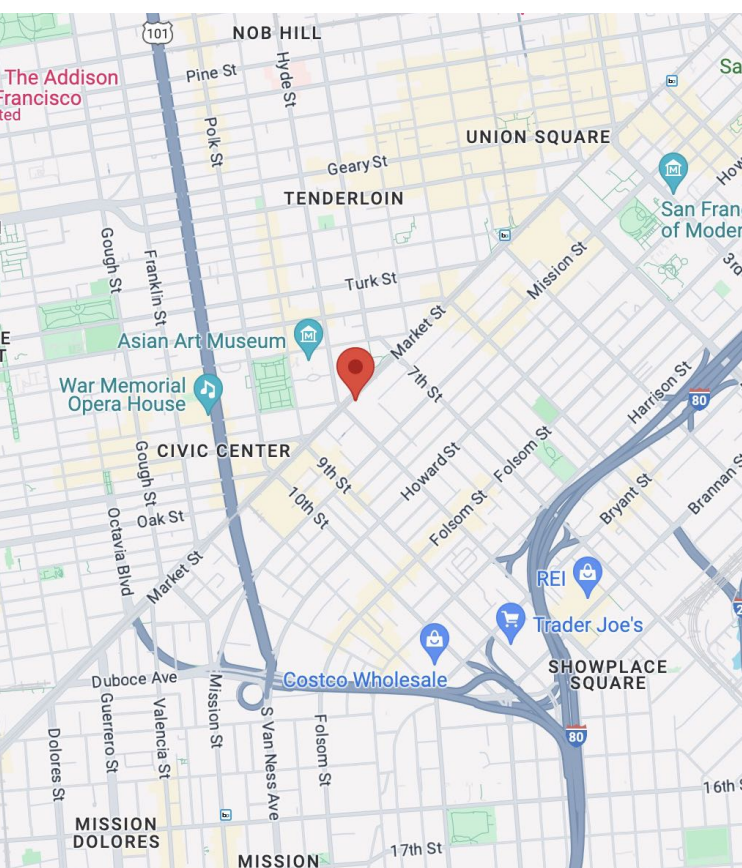


RETAIL SPACE FOR SUBLEASE

1185 MARKET ST
SAN FRANCISCO, CA 94103



BOTTOM FLOOR: 42,018 SF
GROUND FLOOR UNIT: 9,236 SF
FOYER: 4,352 SF
RATE: NEGOTIABLE

- + Any conforming uses will be considered
- + Courtyard space
- + Underground parking
- + Sublease from Whole Foods
- + Desirable Market Street corridor location

STEVE MAXSON

SENIOR VICE PRESIDENT, SAN FRANCISCO BAY AREA AND INTERNATIONAL OPERATIONS

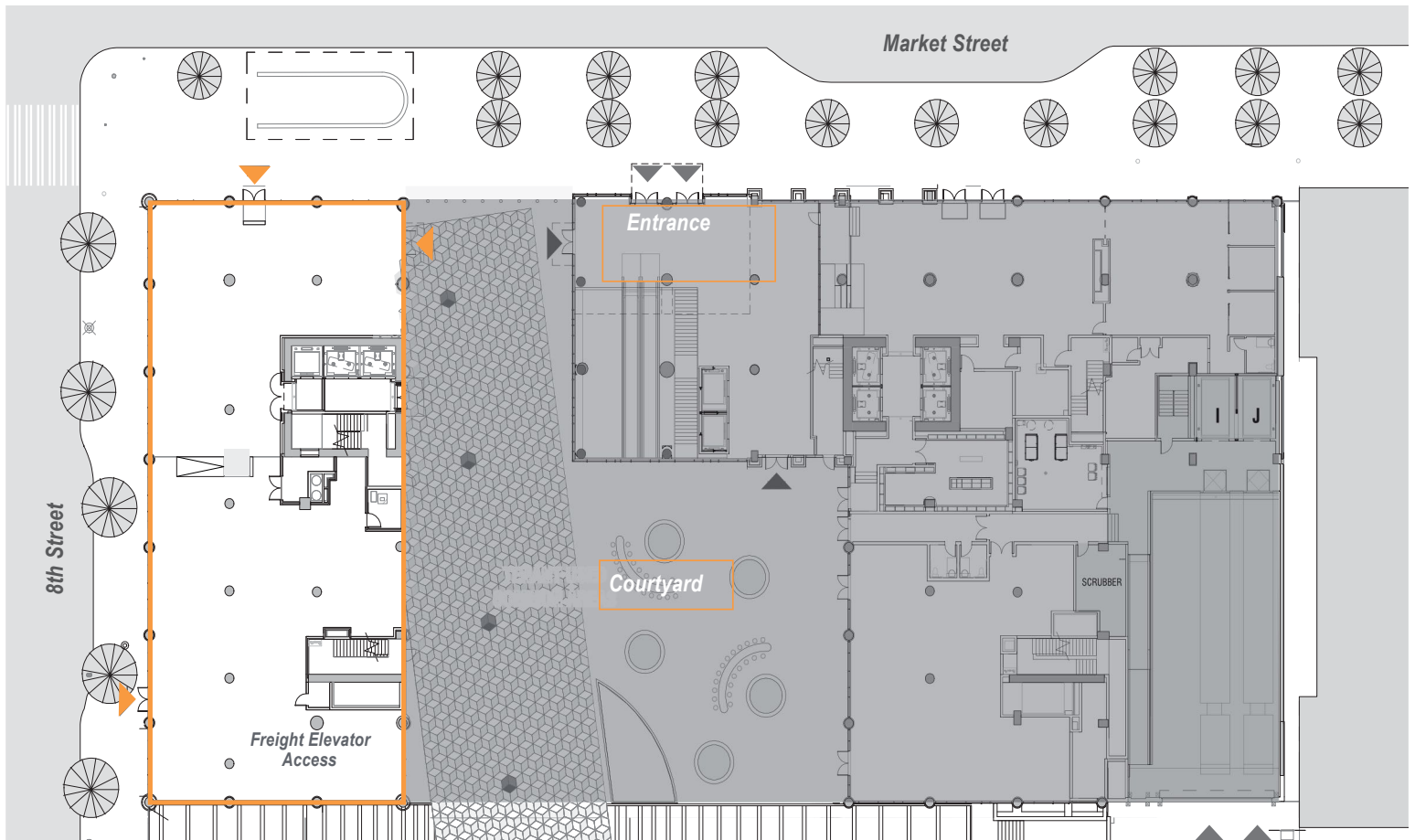
(408) 354-0894 • stevenmaxson@synreg.com • CalBRE # 01958539



RETAIL SPACE FOR SUBLEASE

1185 MARKET ST
SAN FRANCISCO, CA 94103

FLOOR PLAN



POTENTIAL USES

1. Retail space (e.g., clothing, home goods, or furniture store)
2. Restaurant or food hall
3. Co-working space or office suites
4. Fitness studio or wellness center
5. Event venue or conference center
6. Medical or dental office
7. Educational or training facility
8. Art gallery or studio
9. Pop-up market or incubator space
10. Warehouse or distribution center
11. Community center or non-profit organization hub
12. Entertainment venue (e.g., movie theater, bowling alley, or arcade)
13. Health and wellness center (e.g., yoga studio, spa, or chiropractic office)
14. Pet store or animal services center

STEVE MAXSON

SENIOR VICE PRESIDENT, SAN FRANCISCO BAY AREA AND INTERNATIONAL OPERATIONS

(408) 354-0894 • stevenmaxson@synreg.com • CalBRE # 01958539



RETAIL SPACE FOR SUBLEASE

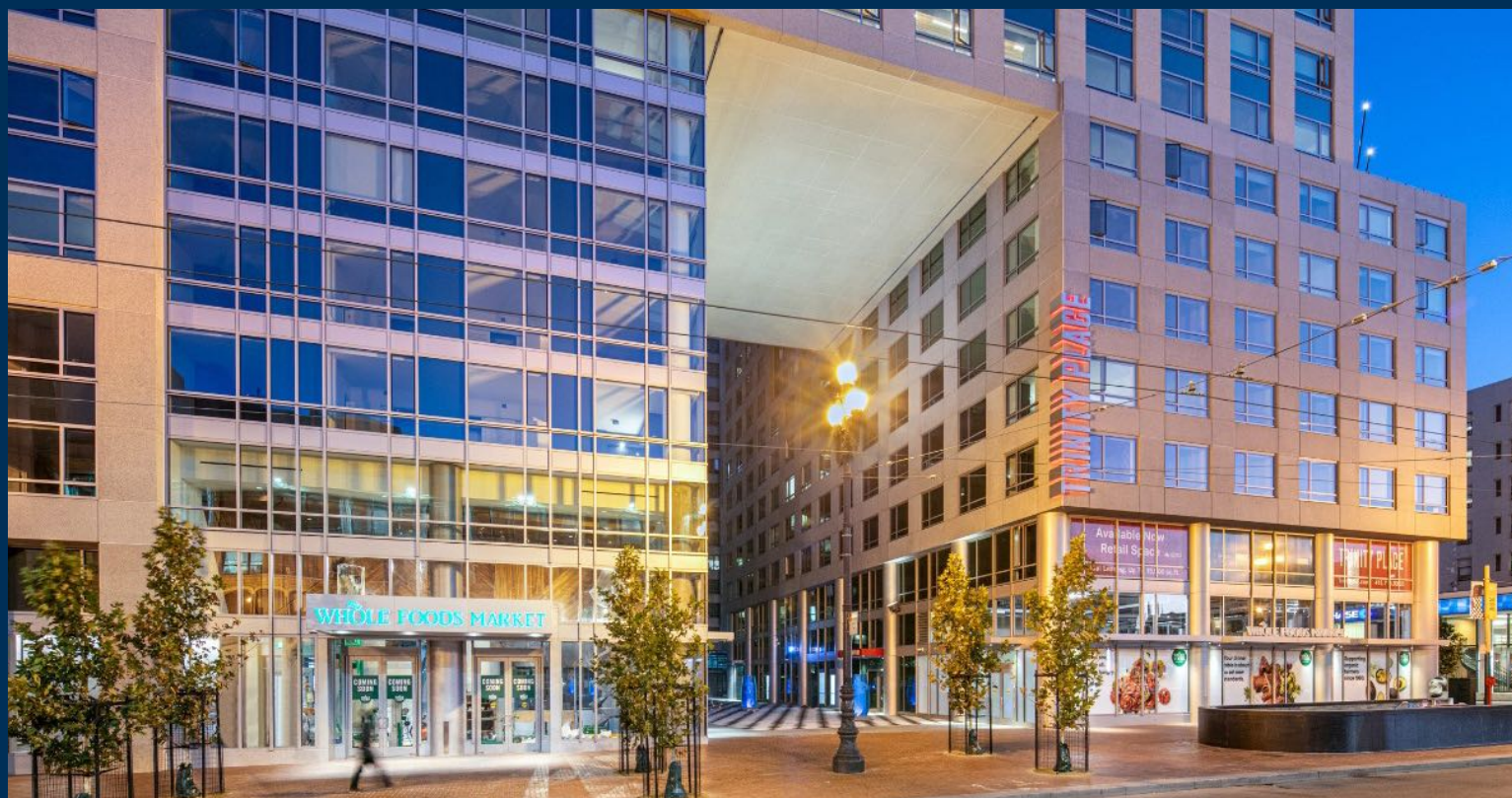
1185 MARKET ST
SAN FRANCISCO, CA 94103

BUILDING ATTRIBUTES

- + 46,370 SF Existing Grocery Store w/ Kitchen Infrastructure
- + 9,236 SF Shell Space
- + Direct Street and Courtyard Access
- + On-Site Parking Available
- + Direct Freight Elevator Loading Access
- + 20 Foot Slab to Slab Ceiling Height
- + Fully Sprinklered & HVAC Throughout
- + Walkable to BART, Caltrain & Many Union Square Amenities

VIDEO WALKTHROUGHS

- + [Market Street Lobby](#)
- + [Lobby Down to Market St](#)
- + [Market Area](#)
- + [Storage & FP](#)



STEVE MAXSON

SENIOR VICE PRESIDENT, SAN FRANCISCO BAY AREA AND INTERNATIONAL OPERATIONS

(408) 354-0894 • stevenmaxson@synreg.com • CalBRE # 01958539

