

# MIDTOWN OFFICE BUILDING

940 N. Waco Ave., Wichita, KS 67203

SALE PRICE: \$439,000



<b>SF AVAILABLE:</b>	9,959 SF
<b>LEASE RATE:</b>	\$10.00 SF/yr (MG)
<b>BUILDING SIZE:</b>	9,959 SF
<b>LOT SIZE:</b>	25,700 SF
<b>YEAR BUILT:</b>	1960
<b>ZONING:</b>	GC/LI

## PROPERTY HIGHLIGHTS

- Free-standing office building.
- Nice mix of private offices and open space.
- Large on-site parking lot.
- Near the Central Business District, Courts, County offices, and City offices.
- Good midtown location.
- Immediate availability.

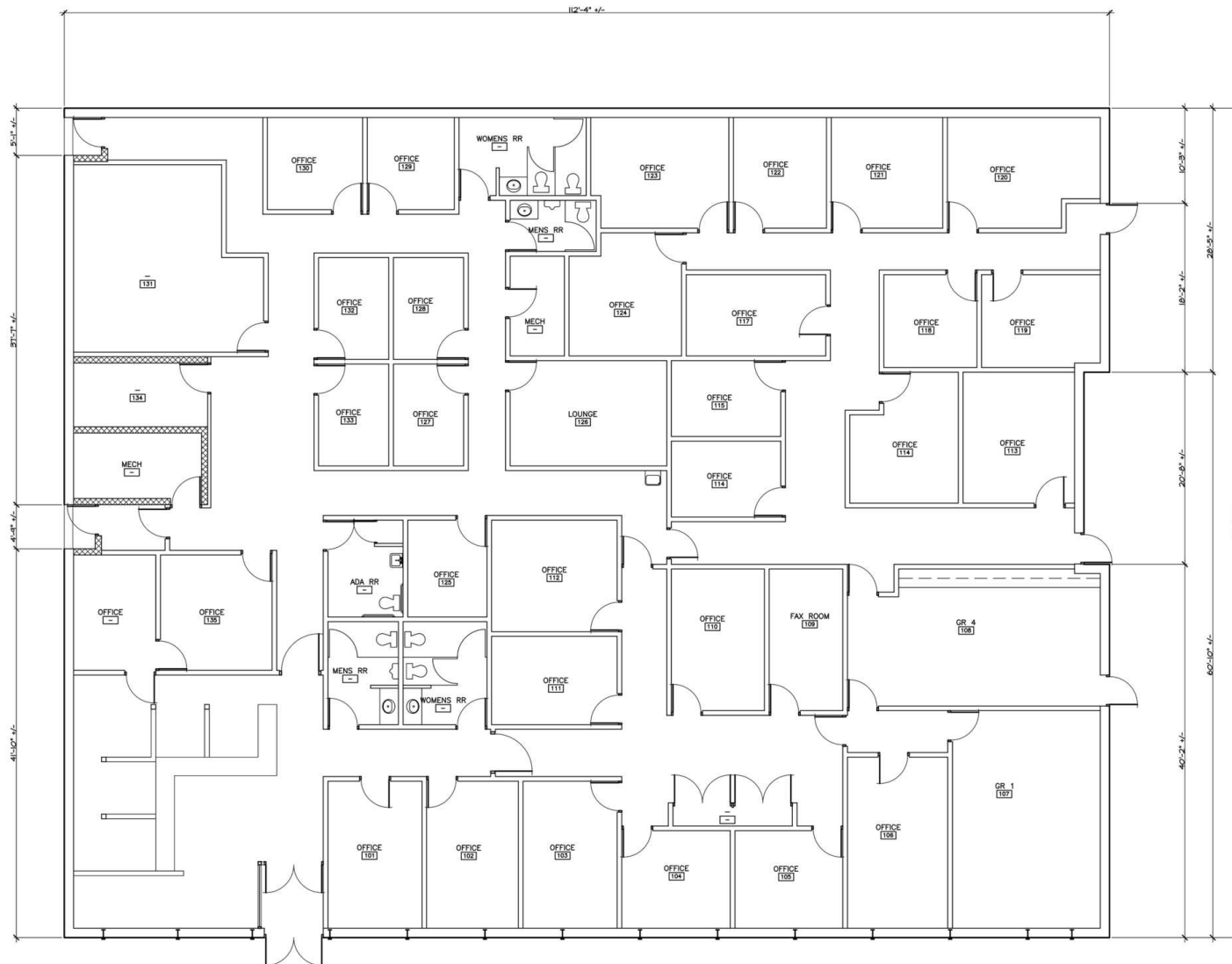


Offered exclusively by: **Randy Johnston** | **316-292-3913** | [rjohnston@weigand.com](mailto:rjohnston@weigand.com)

# MIDTOWN OFFICE BUILDING

940 N. Waco Ave., Wichita, KS 67203

SALE PRICE: \$439,000



Offered exclusively by: **Randy Johnston** | 316-292-3913 | [rjohnston@weigand.com](mailto:rjohnston@weigand.com)



# MIDTOWN OFFICE BUILDING

940 N. Waco Ave., Wichita, KS 67203

SALE PRICE: \$439,000



Offered exclusively by: Randy Johnston | 316-292-3913 | [rjohnston@weigand.com](mailto:rjohnston@weigand.com)