

**AVISON
YOUNG**

For Lease

287 Bridgeland Avenue
North York, ON



Multiple Configurations Available

**Warehouse space
available in the heart of
the Design District**

Tom Clancy

Broker, Principal

647 774 6040

tom.clancy@avisonyoung.com

Tessa Compagno

Sales Representative

905 283 2342

tessa.compagno@avisonyoung.com

Noah Frankel

Sales Representative, Associate

905 283 2379

noah.frankel@avisonyoung.com

FOR LEASE

287 Bridgeland Avenue
North York, ON

Property Summary



SHIPPING
1 TL



TMI (2024)
\$6.50 PSF



Zoning
M2



POSSESSION
IMMEDIATE

	SIZE	CLEAR HEIGHT	OFFICE AREA	ASKING NET RENT	Comments
UNIT A	15,000 sf	14'	10%	\$12.95 psf	- Industrial unit with truck level shipping that can accommodate 53' trailers
UNIT B	4,871 sf	13' 2"	10%	\$12.50 psf	- Built out as a Muay Thai facility, includes showers and is well-suited for use as a gym - Can also be demised into smaller configurations to suit your needs.
UNIT A + B	19,871 sf	14'	10%	\$12.95 psf	- Fiber internet available
UNIT A + B + 200	25,321 sf	14'	10%	\$12.95 psf	- Industrial unit with truck level shipping that can accommodate 53' trailers combined with entire second-floor office space - The unit includes one unisex washroom, fiber internet, and additional on-site parking
UNIT A + 200	20,450 sf	14'	10%	\$12.95 psf	- The space can be demised into smaller configurations

Property Highlights

- Prime corner unit with exposure on Caledonia Road
- Multiple configurations possible
- Building has Highway 401 visibility
- Great connectivity to TTC bus routes
- Quick access to Allen Road and Highway 401 interchange

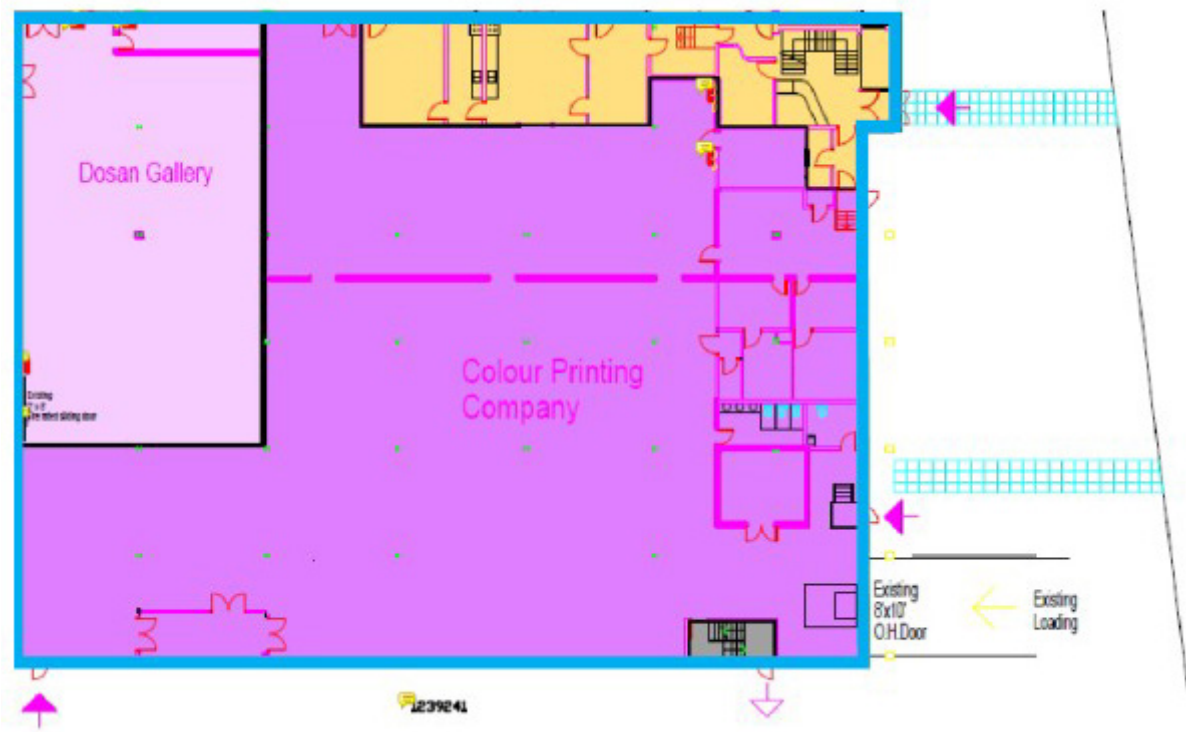


FOR LEASE

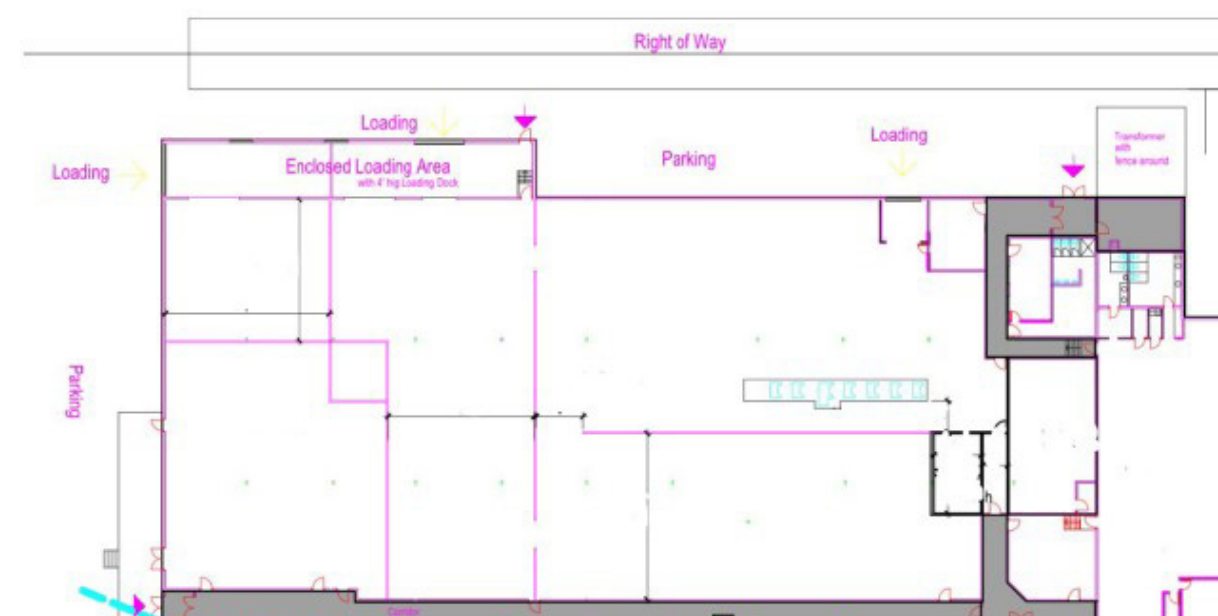
287 Bridgeland Avenue
North York, ON

Floor Plan

Front Unit



Unit D

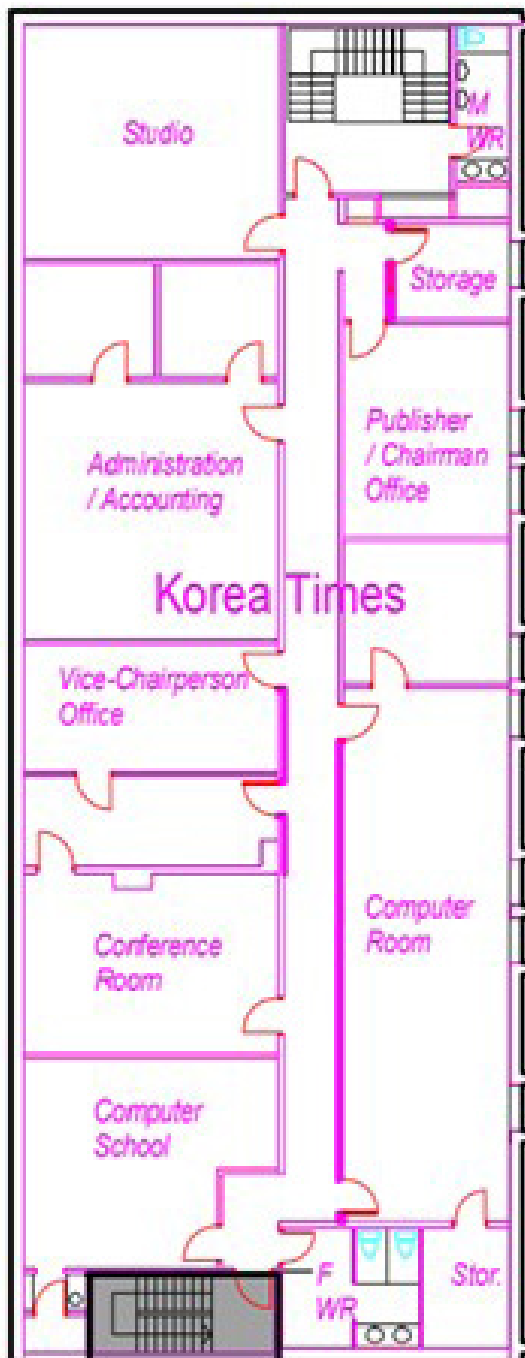


FOR LEASE

287 Bridgeland Avenue
North York, ON

Floor Plan

Second Floor



FOR LEASE

287 Bridgeland Avenue
North York, ON

Property Photos

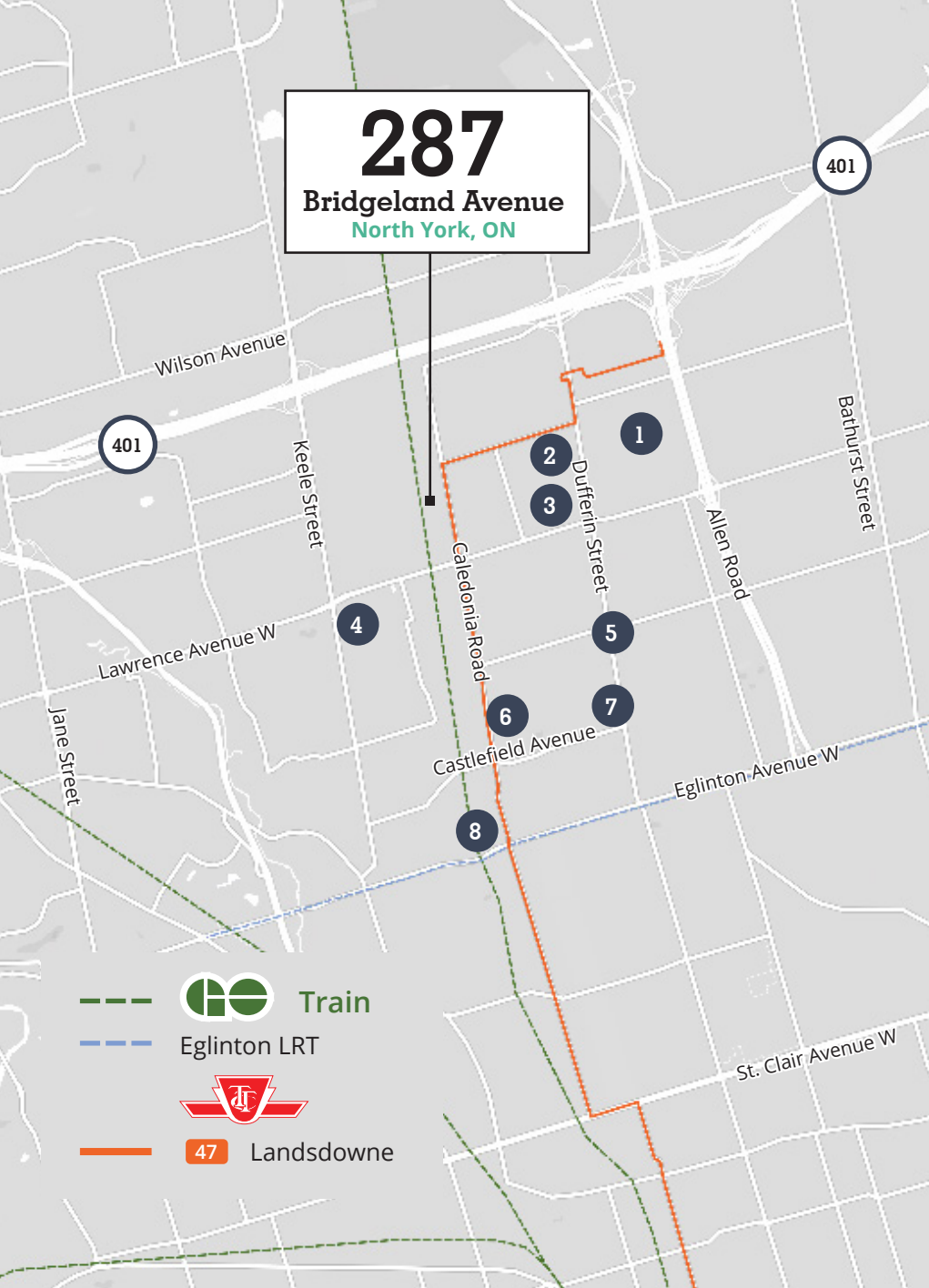


Zoning - M2

Permitted uses

- adult education school
- artist studio
- banquet hall
- car rental agency
- car washing establishment
- club
- college
- commercial gallery
- commercial recreation
- commercial school
- communications and broadcasting;
- community centre
- contractor's establishment
- custom workshop
- financial institution
- fitness centre
- gasoline station
- golf course
- health science research laboratory
- hotel
- industrial sales and service;
- information processing
- laundry
- manufacturing
- motor vehicle body repair shop
- motor vehicle dealership
- museum
- office uses
- park
- parking lot
- personal service shop
- pinball and video games arcade
- place of worship
- public library
- public self storage warehouse
- research laboratory
- restaurant, with or without an outdoor patio
- retail store
- service shop
- service station
- showroom
- transportation terminal
- university uses
- veterinary clinic
- warehouse
- works yard.





Amenities & Transit

- | | |
|---|--|
| 1 Yorkdale Shopping Centre
Indigo
Sephora
Restoration Hardware
Joey
Hudson's Bay | 5 Mr.Sub
Petro
CIBC
McDonalds |
| 2 Staples
Red Lobster
Burger's Priest
Party City | 6 Rona+
Home Depot
Tim Hortons
Starbucks |
| 3 Freshii
Burger King
Shell
Harvey's | 7 Tim Hortons
California Sandwiches
Toronto Pho
Taste of Shawarma |
| 4 Metro
Scotiabank
LCBO
Walmart | 8 FreshCo
Dollar Tree
Canadian Tire |

For more information:

Tom Clancy Broker, Principal 647 774 6040 tom.clancy@avisonyoung.com	Tessa Compagno Sales Representative 905 283 2342 tessa.compagno@avisonyoung.com
--	---

Noah Frankel
Sales Representative, Associate
905 283 2379
noah.frankel@avisonyoung.com

Avison Young Commercial Real Estate Services, LP, Brokerage
77 City Centre Drive, Suite 301, Mississauga, Ontario L5B 1M5
Office 905 712 2100 Fax 905 712 2937 avisonyoung.ca

© 2025, Avison Young Commercial Real Estate Services, LP, Brokerage. Information contained herein was obtained from sources deemed reliable and, while thought to be correct, have not been verified. Avison Young does not guarantee the accuracy or completeness of the information presented, nor assumes any responsibility or liability for any errors or omissions therein. © Mapbox, © OpenStreetMap

