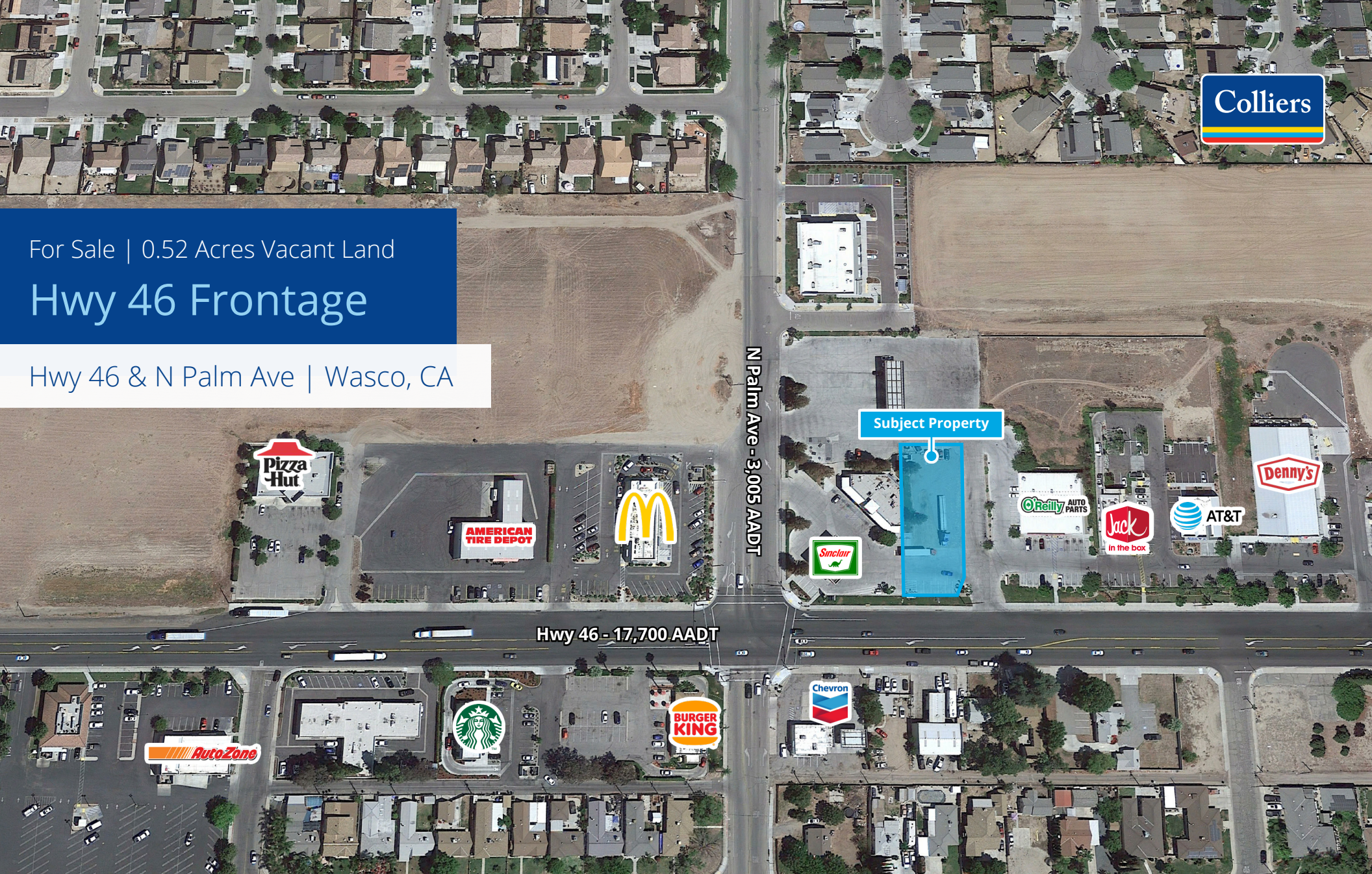




For Sale | 0.52 Acres Vacant Land

Hwy 46 Frontage

Hwy 46 & N Palm Ave | Wasco, CA



Subject Property

N Palm Ave - 3,005 AADT

Hwy 46 - 17,700 AADT

Contact Us:

Scott Wells
Senior Vice President | Principal
License No. 01126196
+1 661 631 3822
scott.wells@colliers.com

Colliers International
10000 Stockdale Hwy, Suite 102
Bakersfield, CA 93311
+1 661 631 3800
www.colliers.com/bakersfield

Property Overview

The subject site is located in Wasco, California at Highway 46 and Palm Avenue, adjacent to the Sinclair Oil Station.

Sales Price:

\$400,000

Available:

0.52 acres

Property Highlights:

- Highly visible and easily accessible.
- Close proximity to major highways and thoroughfares.
- Surrounded by mix of residential and commercial properties.
- Ideal location for businesses looking to expand or establish a presence in the surrounding area.
- Off sites complete
- Zoned commercial retail
- APN: 487-040-27



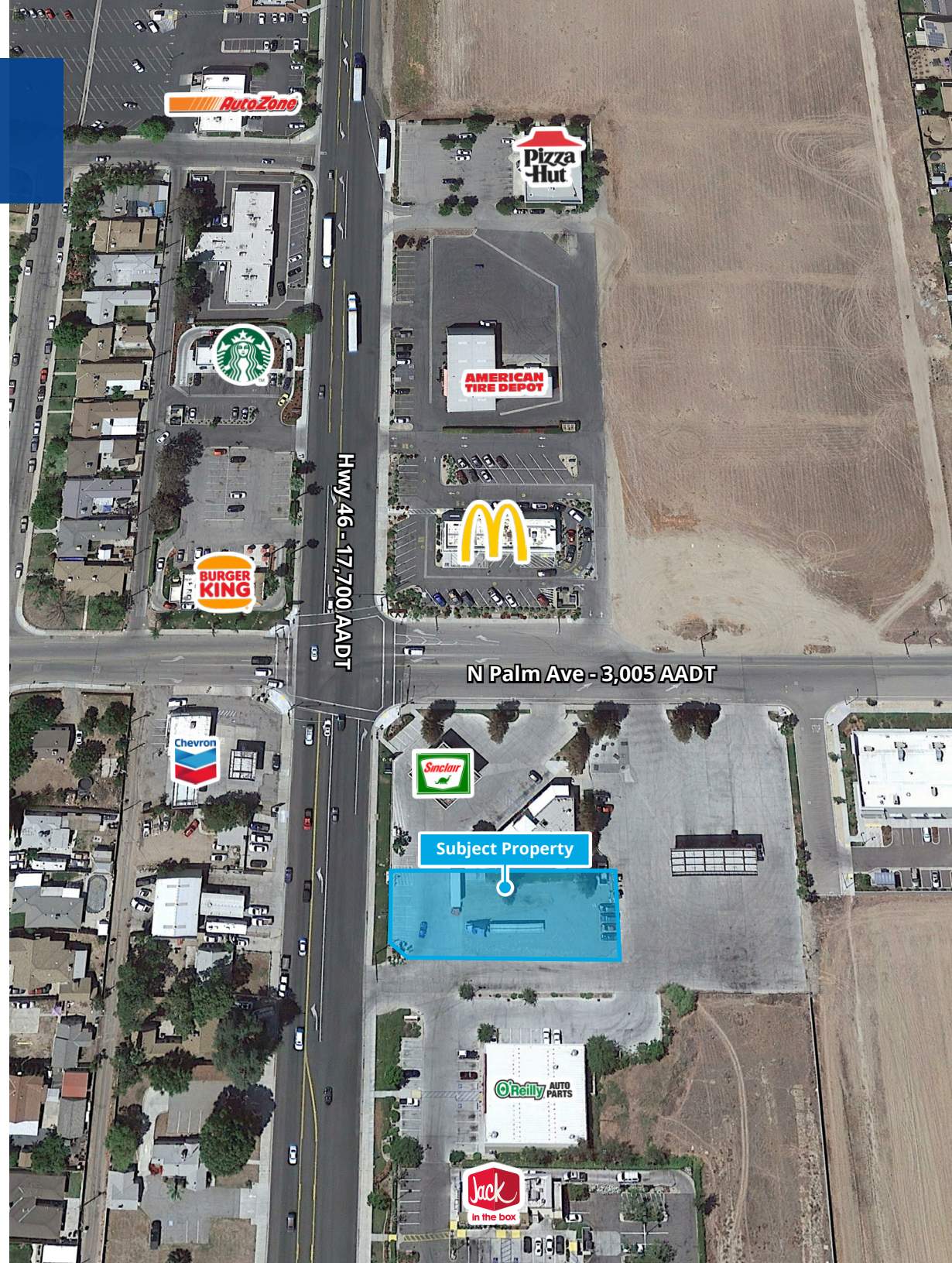
Sewer
City of Wasco



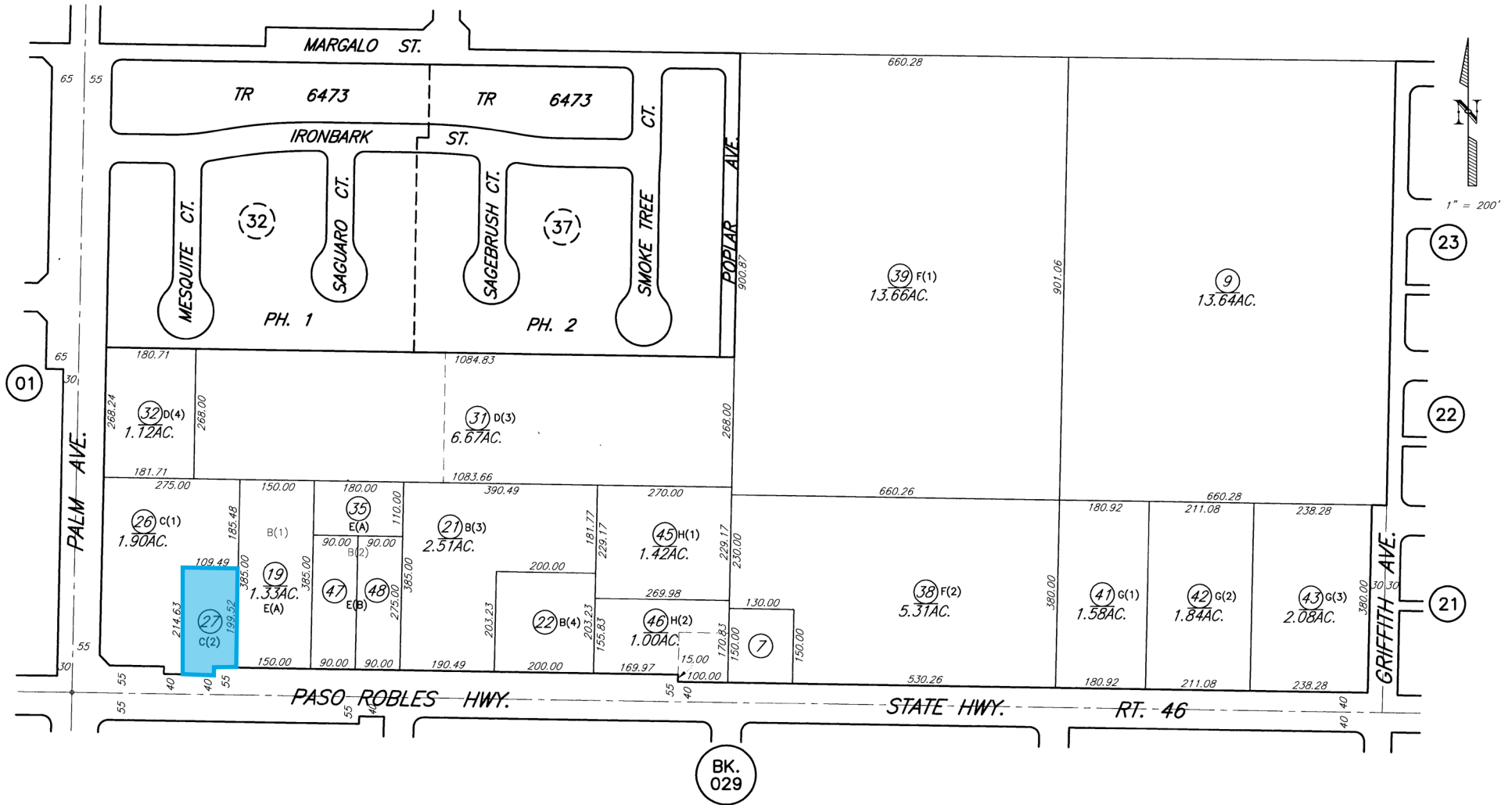
Water
City of Wasco



Electric
PG&E



APN Map



Aerial



Contact Us:

Scott Wells
Senior Vice President | Principal
License No. 01126196
+1 661 631 3822
scott.wells@colliers.com

Colliers International
10000 Stockdale Hwy, Suite 102
Bakersfield, CA 93311
+1 661 631 3800
www.colliers.com/bakersfield