

FOR SALE

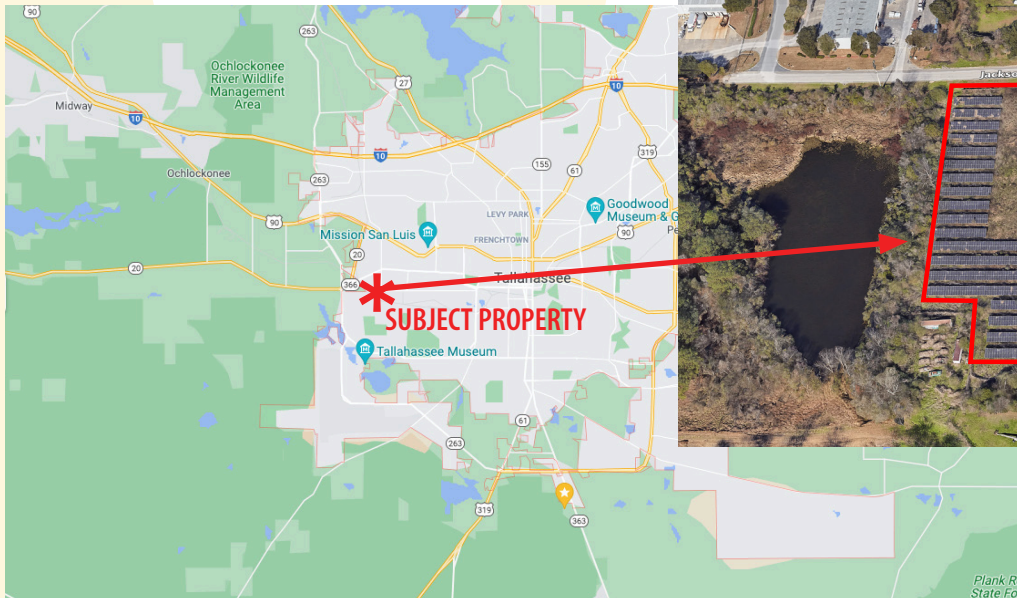
THE **WILLIAMS** GROUP
commercial real estate services

4.056 Acres Industrial Land

Yulee Street at Jackson Bluff Road, Tallahassee, FL

- >> Parcel ID: 4104202380000 & 4104202080000
- >> Zoning: M-1- light industrial
OPPORTUNITY ZONE & HUB ZONE
Up to 200,000 sq ft of floor area allowed for storage
- >> No wetlands, no flood zones, mostly fenced
- >> Possibility to purchase up to 4 acres of capacity from adjacent stormwater pond, eliminating need for on-site stormwater pond
- >> Solar with net metering in place, 3 phase power already on site
- >> 4.0 miles from Tallahassee International Airport
3.8 miles from downtown Tallahassee and State Capitol
4.2 miles to I-10 (exit 196) via Capital Circle (Truck Route)

>> **Asking Price: \$2,000,000**



For more information contact :
Johanna W Money

PO Box 2068 Tallahassee, FL 32316 // p 850.545.1674 // f 850.224.1790 // johanna@williamsgroupcre.com

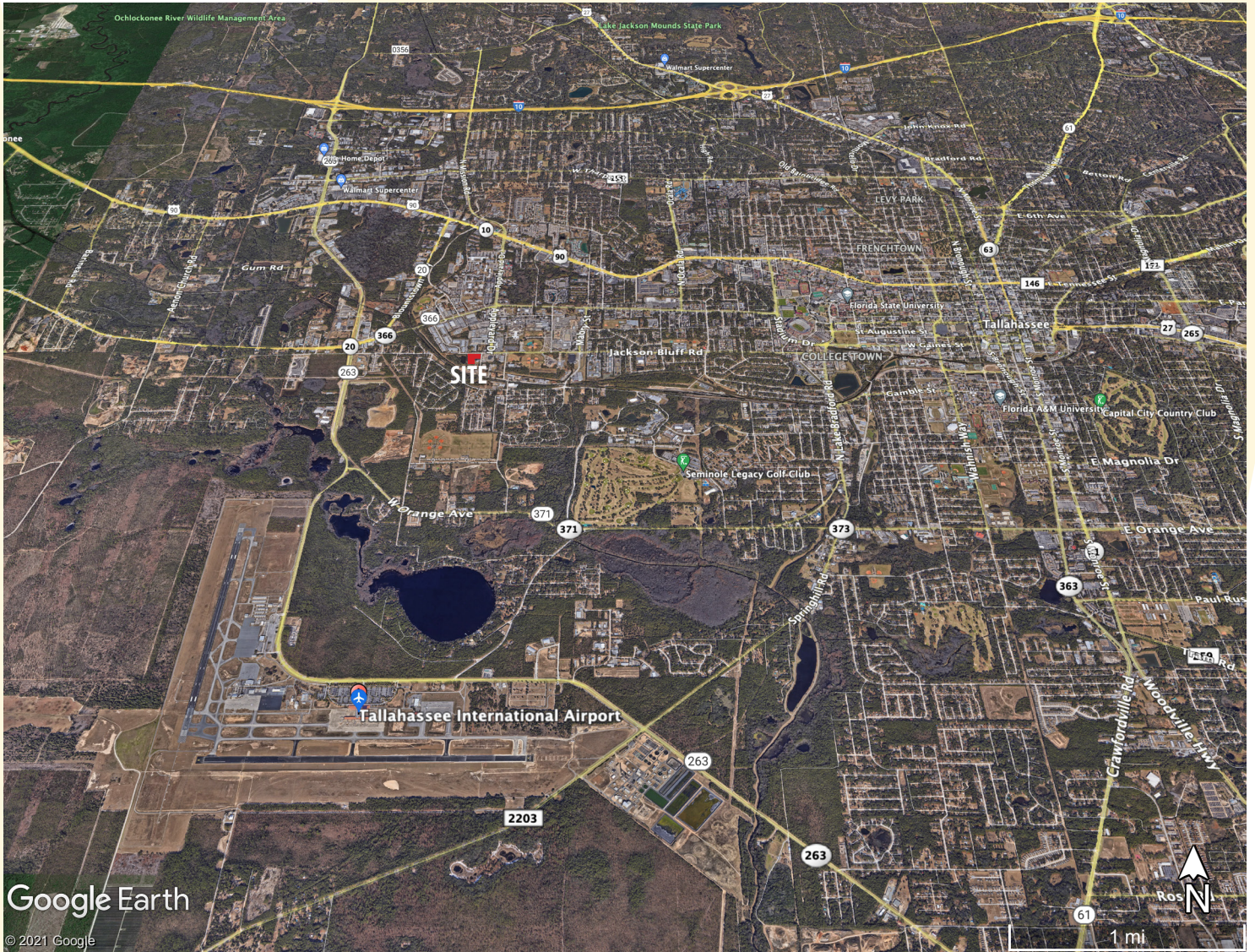
All information contained in this document is deemed reliable but not guaranteed. All properties are subject to prior sale, change or withdrawal notice. The Williams Group believes all information to be correct but assumes no legal responsibility for accuracy.

850.545.1674
www.WilliamsGroupCRE.com

FOR SALE

THE **WILLIAMS** GROUP
commercial real estate services

:::Location:::



Google Earth

© 2021 Google

For more information contact :
Johanna W Money

PO Box 2068 Tallahassee, FL 32316 // p 850.545.1674 // f 850.224.1790 // johanna@williamsgroupcre.com

All information contained in this document is deemed reliable but not guaranteed. All properties are subject to prior sale, change or withdrawal notice. The Williams Group believes all information to be correct but assumes no legal responsibility for accuracy.

850.545.1674
www.WilliamsGroupCRE.com