

235A SW OAK ST

Hillsboro, OR 97123

FOR LEASE



RETAIL SPACE FOR LEASE

DETAILS

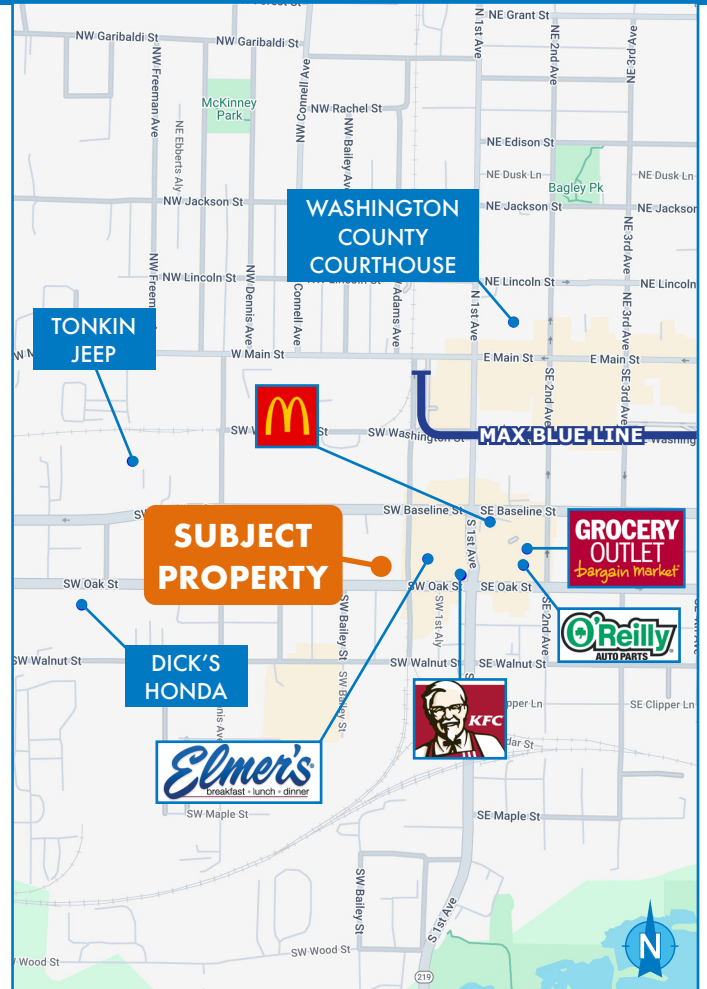
- Space size: ± 4,830 SF
- Lease rate: Call broker for rate/NNN

FEATURES

- Former auto parts store with storefront entrance and back-room storage
- Roll-up door to back room storage area
- Great pylon sign exposure
- Ample on-site parking
- Prime Hillsboro location on SW Oak St with ± 16,488 VPD
- Walking distance to Downtown Hillsboro amenities: MAX line, Grocery Outlet, McDonald's, KFC, Elmer's Restaurant, Washington County Courthouse, O'Reilly Auto Parts, Dick's Honda, and Tonkin Jeep

DEMOGRAPHICS

	1 MILE	3 MILES
Population	9,788	60,318
Households	3,343	20,041
Median Age	37.90	38
Median Household Income	\$73,923	\$87,078
Daytime Employees	13,205	23,709
Population Growth '24 - '29	+ 0.21%	+ 0.26%
Household Growth '24 - '29	+ 0.24%	+ 0.28%



03.14.2024

For more information or a property tour, please contact:

LUIS MARTIN DEL CAMPO

503.416.8422

LuisM@norris-stevens.com

Norris & Stevens

INVESTMENT REAL ESTATE SERVICES



Information contained herein has been obtained from others and considered to be reliable; however, a prospective purchaser or lessee is expected to verify all information to their own satisfaction.

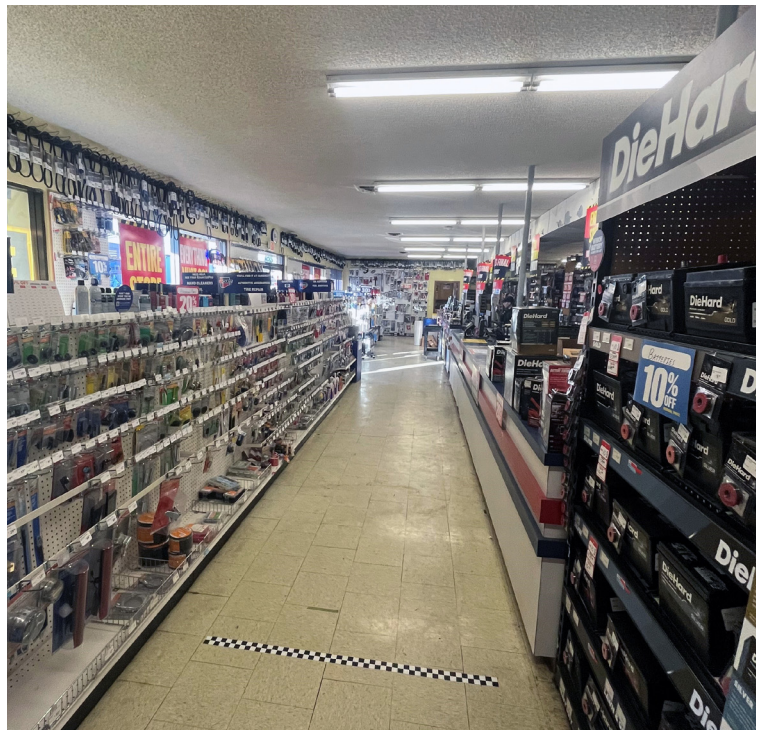
900 SW 5th Avenue • 17th Floor • Portland, OR 97204
503.223.3171 • norris-stevens.com

235A SW OAK ST

Hillsboro, OR 97123

FOR LEASE

PROPERTY PHOTOS



For more information or a property tour, please contact:

LUIS MARTIN DEL CAMPO

503.416.8422

LuisM@norris-stevens.com

Norris & Stevens

INVESTMENT REAL ESTATE SERVICES



Information contained herein has been obtained from others and considered to be reliable; however, a prospective purchaser or lessee is expected to verify all information to their own satisfaction.

900 SW 5th Avenue • 17th Floor • Portland, OR 97204
503.223.3171 • norris-stevens.com