

SPOKANE VALLEY PLAZA

15521 - 15735 E. Broadway – Spokane Valley, WA



**FOR
LEASE:
WALMART
ANCHORED
POWER
CENTER**

Join us in welcoming
our newest Tenants:



UNITS AVAILABLE:

+/- 4,597 Sq Ft near Walmart, Sally Beauty, Club Pilates
(15735 E Broadway Suite C1 –Plato’s Closet)

Property Information

- Dynamic Power Center Anchored by Super Walmart
- High Traffic Valley Retail Location
- Excellent Visibility from I-90 (94,000 ADT)
- Pylon Signage
- Largest Power Center on I-90 between Seattle & Minneapolis
- Nearest access to Spokane Valley shoppers

For information,
contact:

Ryan Clifford
(509) 456-2530
rcclifford@gmail.com

Clifford Enterprises
818 W. Riverside Ave.
Suite 660
Spokane, WA 99201

The above statement was made based upon information furnished by the owner or from sources which we believe are reliable. While we do not doubt its accuracy we have not verified it and we do not make any guarantee, warranty or representation about it. It is your responsibility to independently verify its accuracy and completeness. Your tax, financial, legal and toxic substance advisors should conduct a careful independent investigation of the property and its suitability for your needs, including contacting the appropriate governmental offices for zoning and land use information.



SPOKANE VALLEY PLAZA

15521 - 15735 E. Broadway – Spokane Valley, WA

National Co-Tenants



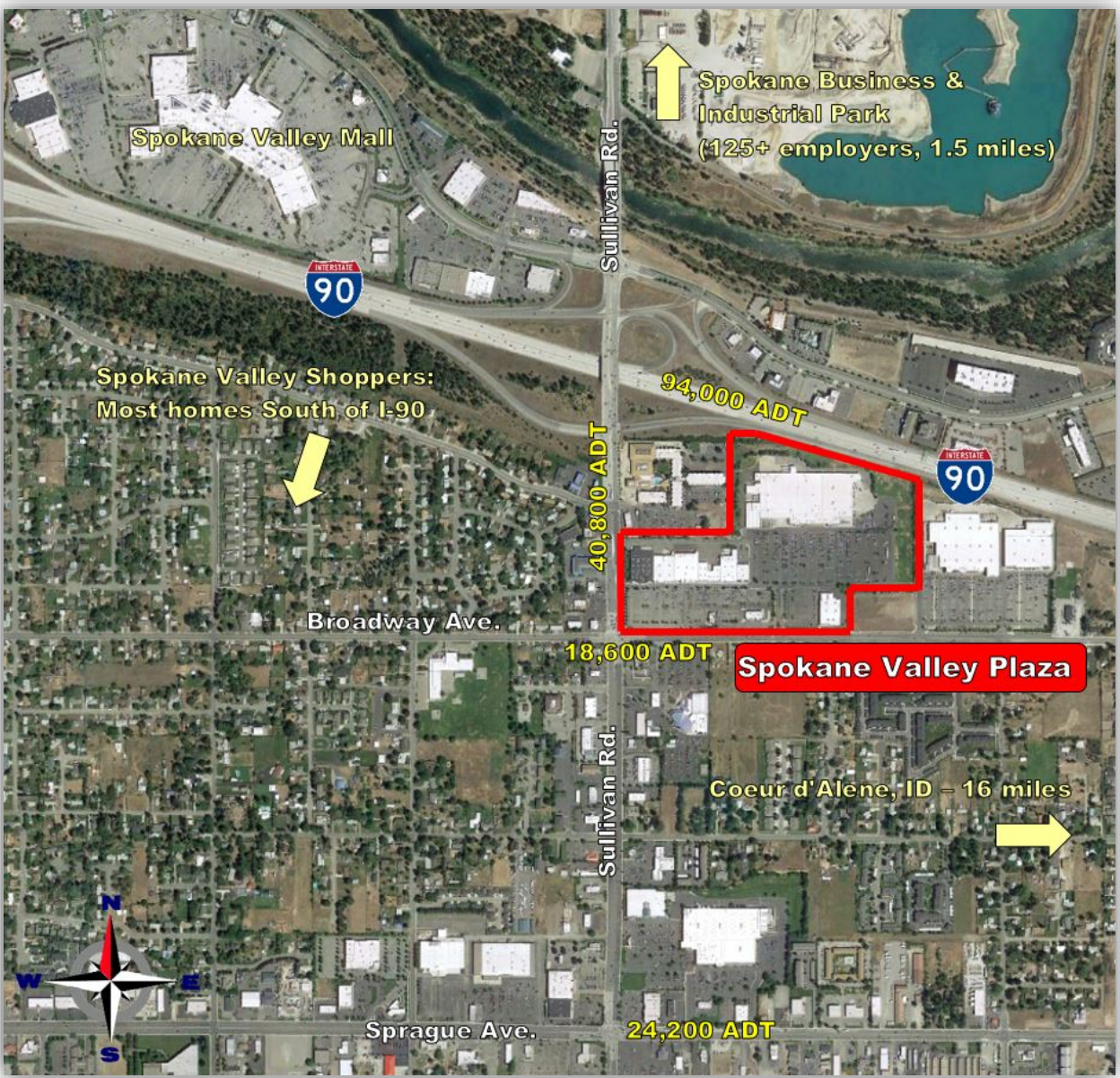
CE

CLIFFORD
ENTERPRISES

SPOKANE VALLEY PLAZA

15521 - 15735 E. Broadway – Spokane Valley, WA

Great Location: Great Traffic, Great Demographics



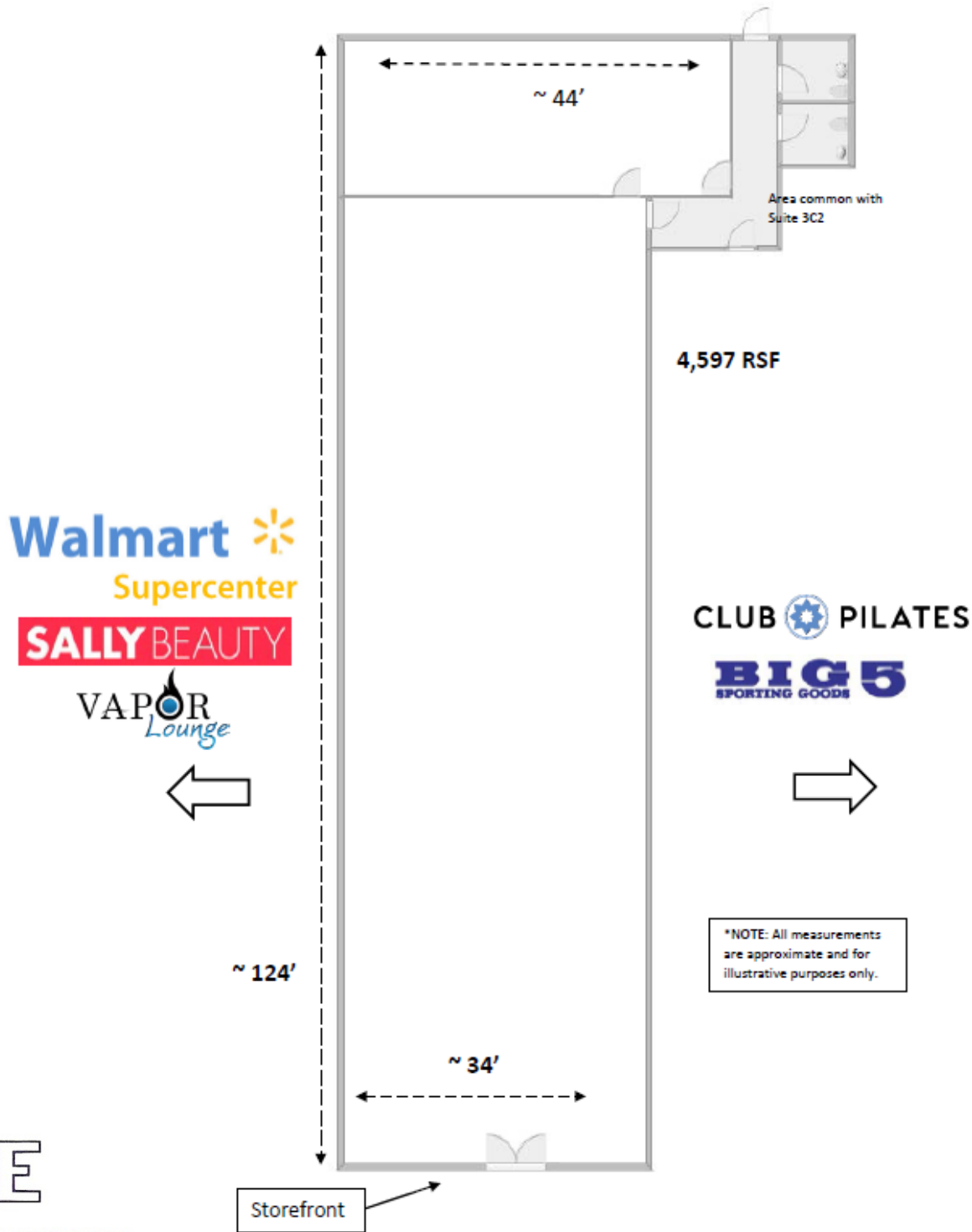
Demographics	1-Mile	3-Mile	5-Mile
Population	7,041	66,621	109,182
2024 Pop.	7,716	71,974	117,457
Employees	8,840	32,058	53,370
Businesses	732	3,143	5,346
Avg. HH Inc.	\$62,642	\$67,629	\$71,294



SPOKANE VALLEY PLAZA

15521 - 15735 E. Broadway – Spokane Valley, WA

SPOKANE VALLEY PLAZA FLOOR PLAN – UNIT 3C1 (CURRENT PLATO'S CLOSET)



CE
CLIFFORD ENTERPRISES