

**112 N US Highway 1  
Jupiter, FL 33469**

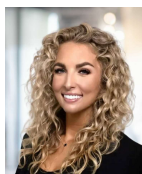
Sale Price  
**\$ 4,675,000**

Introducing a prime opportunity for office building investors in the heart of South Florida: 112-120 N US Highway 1, Jupiter, FL, 33469. This 5,851 square foot building, zoned M-U—MIXED USE (60-TEQUESTA), offers a lucrative investment. The strategic location combined with the robust local market make this property an enticing investment prospect for those seeking a stable and high-performing asset. With its ideal size and zoning, this property presents a promising opportunity for office building investors looking to capitalize on the thriving South Florida area.



**Chip Armstrong**  
*Director of Commercial Sales*

561.371.3787  
chiparmstrong@keyes.com



**Liz Nunes**  
*Director of Luxury*

561.351.4529  
lnunes@ipre.com

**The Keyes Company** Mr. Chip Armstrong, 11290 Legacy Avenue, Suite 210, Palm Beach Gardens, FL 33410 [keyescommercial.com](http://keyescommercial.com)

This information has been secured from sources we believe to be reliable, but we make no representations nor warranties, express nor implied as to the accuracy of the information. References to square footage are approximate. Buyer must verify the information and bears all risks for any inaccuracies.





## Property Description

Introducing a prime opportunity for office building investors in the heart of South Florida: 112-120 N US Highway 1, Jupiter, FL, 33469. This 5,851 square foot building, zoned M-U—MIXED USE (60-TEQUESTA), offers a lucrative investment with 100% occupancy. The strategic location combined with the robust local market make this property an enticing investment prospect for those seeking a stable and high-performing asset. With its ideal size and zoning, this property presents a promising opportunity for office building investors looking to capitalize on the thriving South Florida area.

## Property Highlights

- 5,851 SF building

## Offering Summary

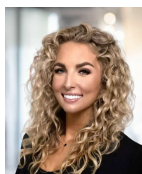
Sale Price:	\$4,675,000
Number of Units:	3
Lot Size:	0.72 Acres
Building Size:	5,851 SF

Demographics	0.3 Miles	0.5 Miles	1 Mile
Total Households	194	594	2,947
Total Population	331	1,016	5,718
Average HH Income	\$143,734	\$143,686	\$136,598



**Chip Armstrong**  
*Director of Commercial Sales*

561.371.3787  
chiparmstrong@keyes.com



**Liz Nunes**  
*Director of Luxury*

561.351.4529  
lnunes@ipre.com

**The Keyes Company** Mr. Chip Armstrong, 11290 Legacy Avenue, Suite 210, Palm Beach Gardens, FL 33410 [keyescommercial.com](http://keyescommercial.com)

This information has been secured from sources we believe to be reliable, but we make no representations nor warranties, express nor implied as to the accuracy of the information. References to square footage are approximate. Buyer must verify the information and bears all risks for any inaccuracies.





**Chip Armstrong**  
*Director of Commercial Sales*

561.371.3787  
chiparmstrong@keyes.com



**Liz Nunes**  
*Director of Luxury*

561.351.4529  
lnunes@ipre.com

The Keyes Company Mr. Chip Armstrong, 11290 Legacy Avenue, Suite 210, Palm Beach Gardens, FL 33410 [keyescommercial.com](http://keyescommercial.com)

This information has been secured from sources we believe to be reliable, but we make no representations nor warranties, express nor implied as to the accuracy of the information. References to square footage are approximate. Buyer must verify the information and bears all risks for any inaccuracies.



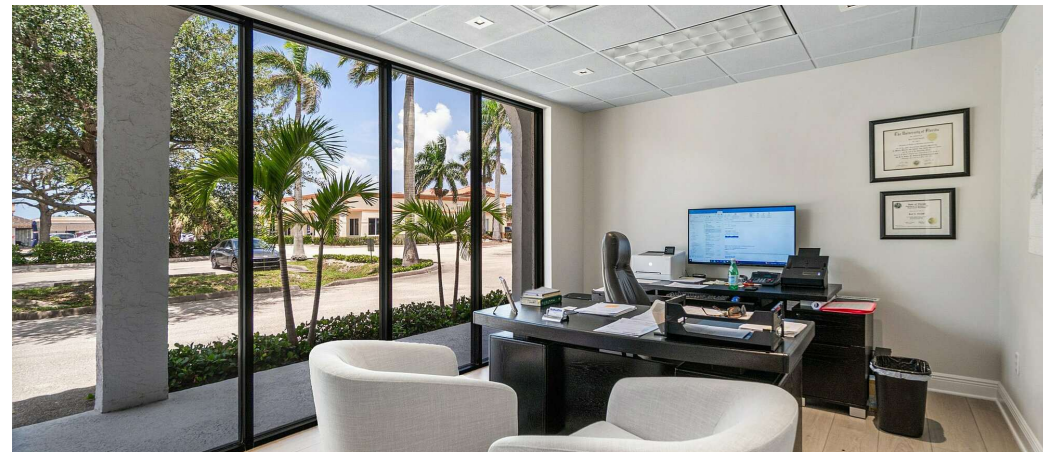
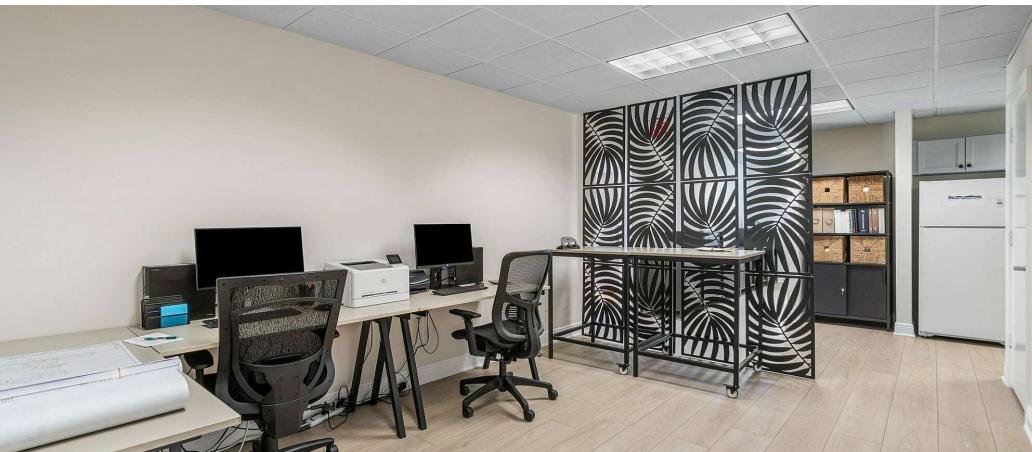
561.371.3787  
chiparmstrong@keyes.com



561.351.4529  
lnunes@ipre.com

This information has been secured from sources we believe to be reliable, but we make no representations nor warranties, express nor implied as to the accuracy of the information. References to square footage are approximate. Buyer must verify the information and bears all risks for any inaccuracies.





**Chip Armstrong**  
*Director of Commercial Sales*

561.371.3787  
chiparmstrong@keyes.com



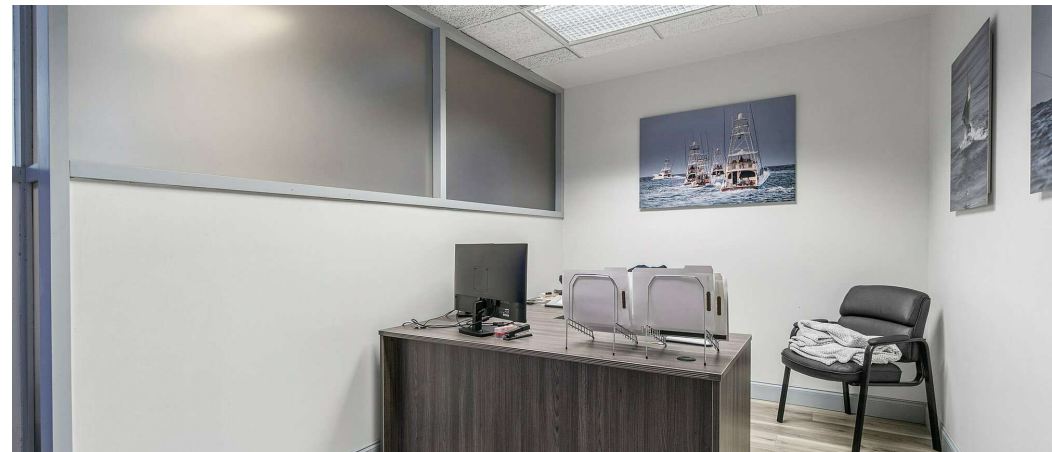
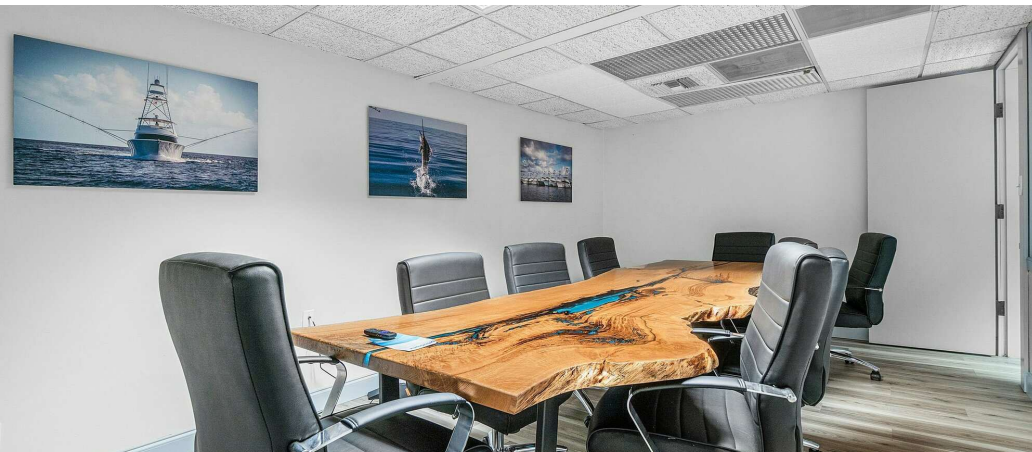
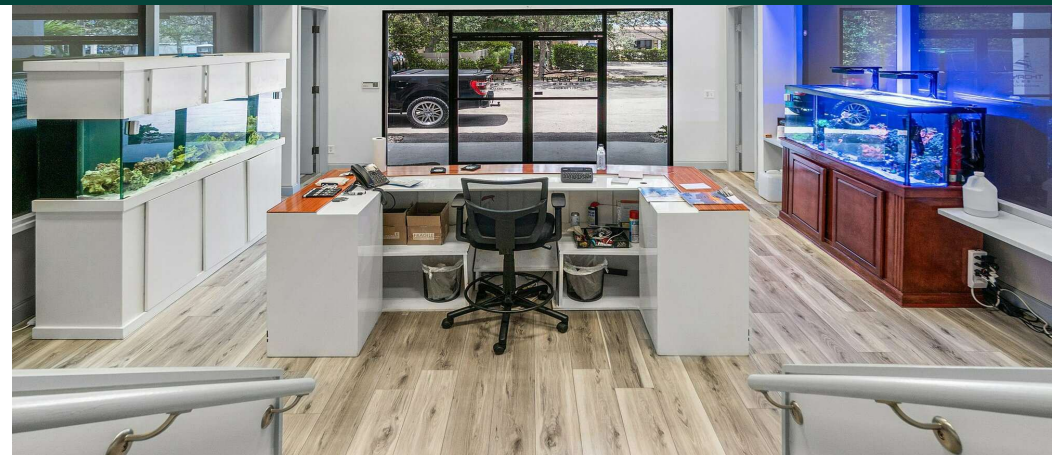
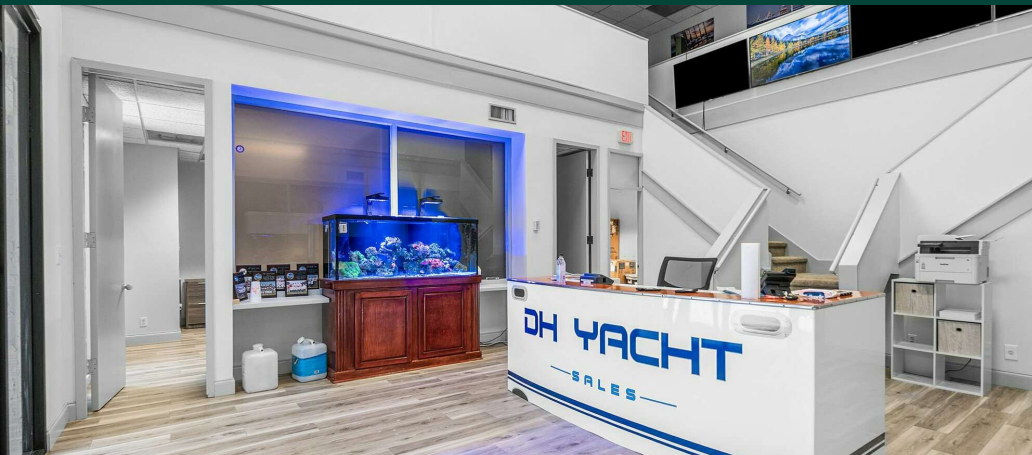
**Liz Nunes**  
*Director of Luxury*

561.351.4529  
lnunes@ipre.com

**The Keyes Company** Mr. Chip Armstrong, 11290 Legacy Avenue, Suite 210, Palm Beach Gardens, FL 33410 [keyescommercial.com](http://keyescommercial.com)

This information has been secured from sources we believe to be reliable, but we make no representations nor warranties, express nor implied as to the accuracy of the information. References to square footage are approximate. Buyer must verify the information and bears all risks for any inaccuracies.





**Chip Armstrong**  
*Director of Commercial Sales*

561.371.3787  
chiparmstrong@keyes.com



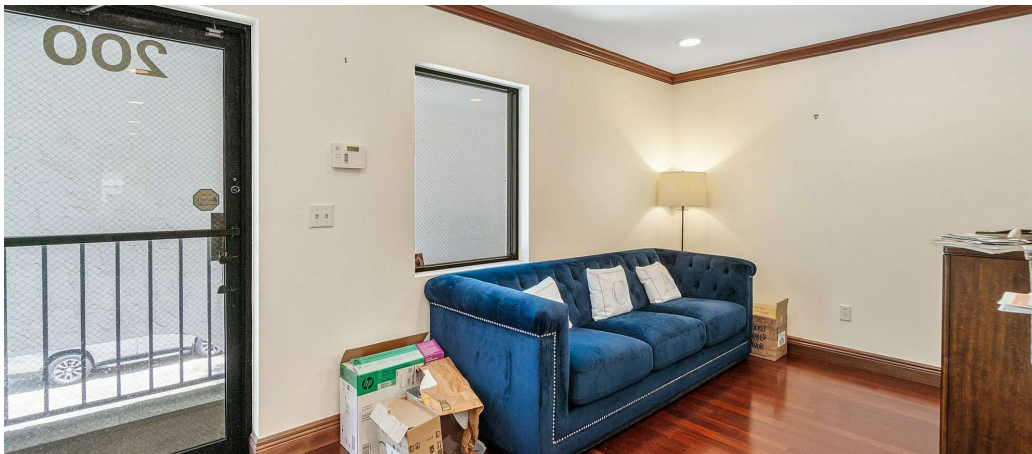
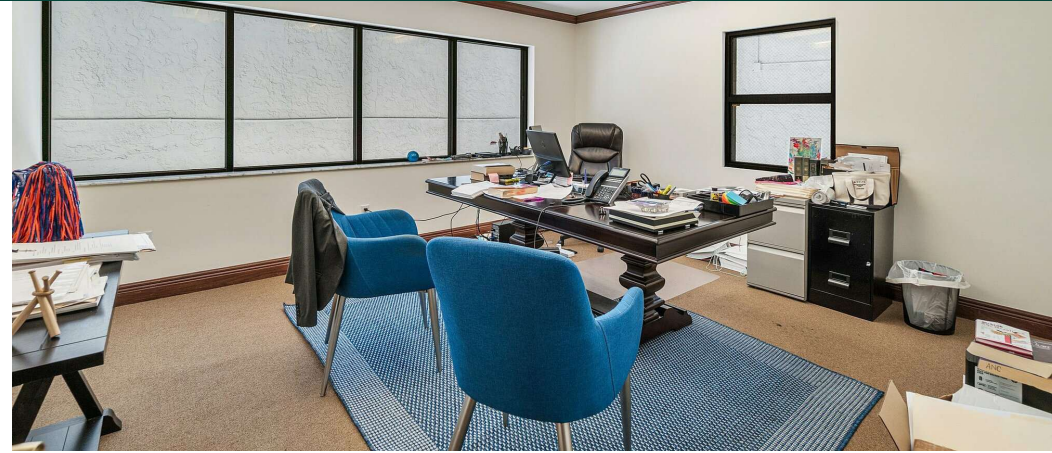
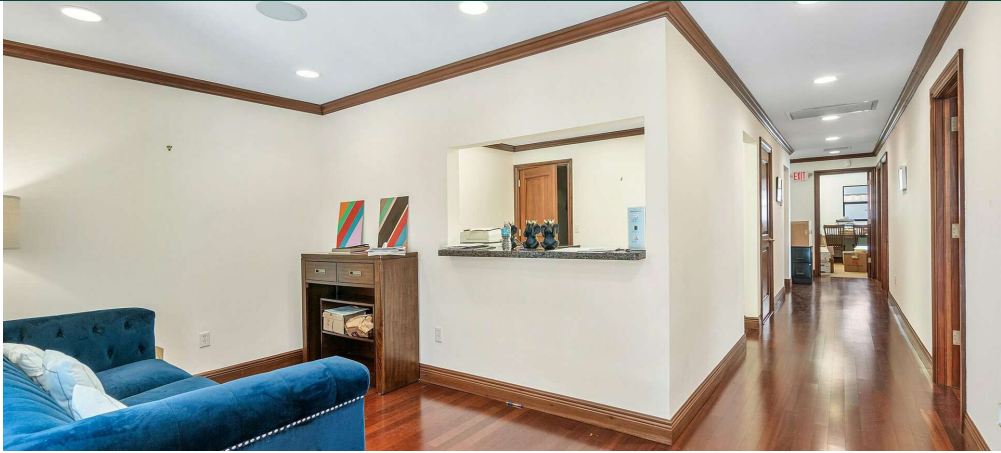
**Liz Nunes**  
*Director of Luxury*

561.351.4529  
lnunes@ipre.com

**The Keyes Company** Mr. Chip Armstrong, 11290 Legacy Avenue, Suite 210, Palm Beach Gardens, FL 33410 [keyescommercial.com](http://keyescommercial.com)

This information has been secured from sources we believe to be reliable, but we make no representations nor warranties, express nor implied as to the accuracy of the information. References to square footage are approximate. Buyer must verify the information and bears all risks for any inaccuracies.





**Chip Armstrong**  
*Director of Commercial Sales*

561.371.3787  
chiparmstrong@keyes.com



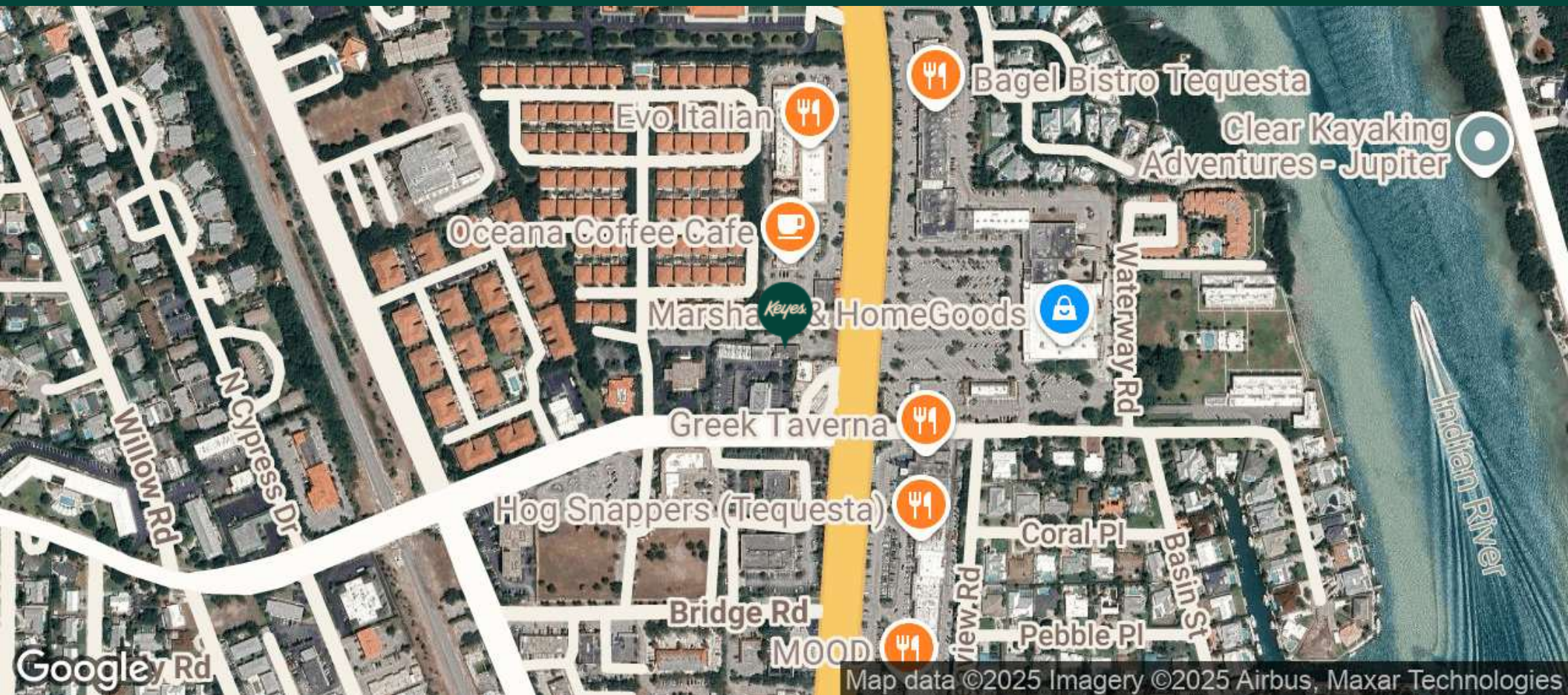
**Liz Nunes**  
*Director of Luxury*

561.351.4529  
lnunes@ipre.com

**The Keyes Company** Mr. Chip Armstrong, 11290 Legacy Avenue, Suite 210, Palm Beach Gardens, FL 33410 [keyescommercial.com](http://keyescommercial.com)

This information has been secured from sources we believe to be reliable, but we make no representations nor warranties, express nor implied as to the accuracy of the information. References to square footage are approximate. Buyer must verify the information and bears all risks for any inaccuracies.





**Chip Armstrong**  
*Director of Commercial Sales*

561.371.3787  
chiparmstrong@keyes.com



**Liz Nunes**  
*Director of Luxury*

561.351.4529  
lnunes@ipre.com

The Keyes Company Mr. Chip Armstrong, 11290 Legacy Avenue, Suite 210, Palm Beach Gardens, FL 33410 [keyescommercial.com](http://keyescommercial.com)

This information has been secured from sources we believe to be reliable, but we make no representations nor warranties, express nor implied as to the accuracy of the information. References to square footage are approximate. Buyer must verify the information and bears all risks for any inaccuracies.

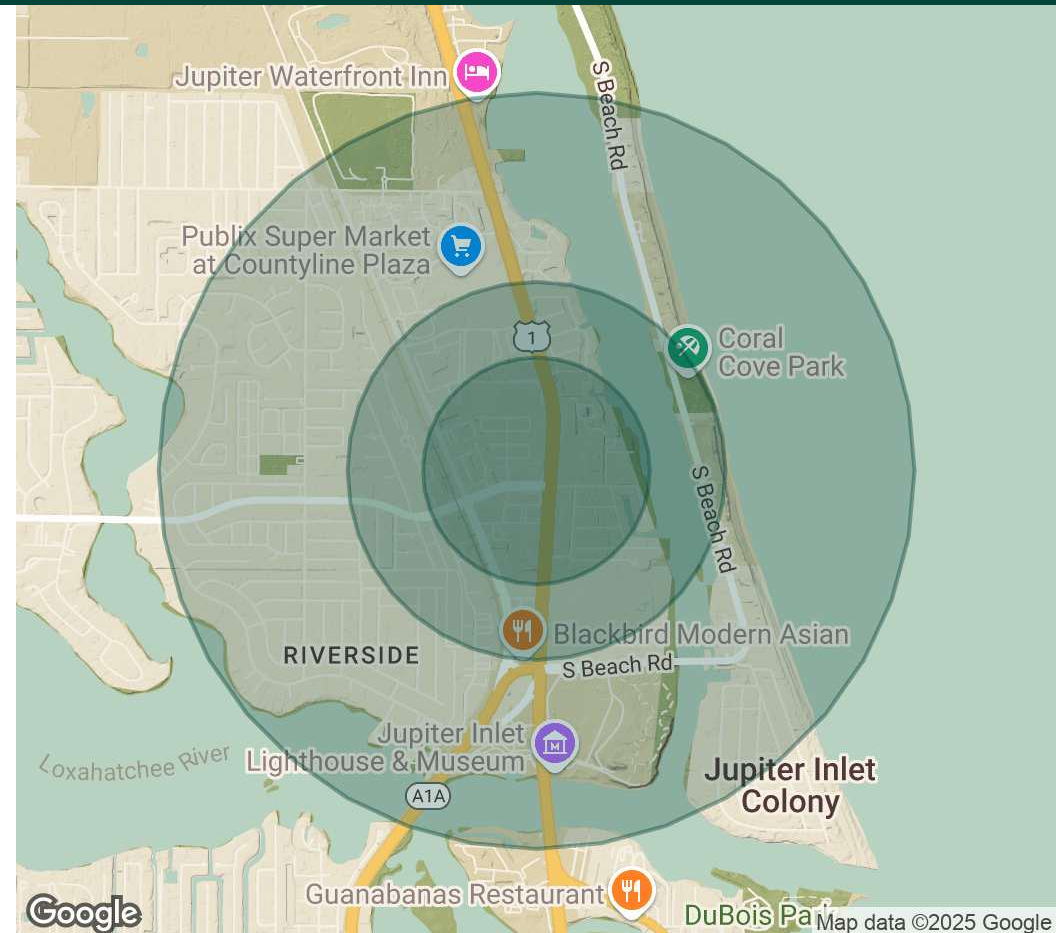


Population	0.3 Miles	0.5 Miles	1 Mile
Total Population	331	1,016	5,718
Average Age	68	67	60
Average Age (Male)	67	66	60
Average Age (Female)	68	67	61

Households & Income	0.3 Miles	0.5 Miles	1 Mile
Total Households	194	594	2,947
# of Persons per HH	1.7	1.7	1.9
Average HH Income	\$143,734	\$143,686	\$136,598
Average House Value	\$755,560	\$735,964	\$732,385

*Demographics data derived from AlphaMap*



**Chip Armstrong**  
*Director of Commercial Sales*

561.371.3787  
chiparmstrong@keyes.com



**Liz Nunes**  
*Director of Luxury*

561.351.4529  
lnunes@ipre.com

**The Keyes Company** Mr. Chip Armstrong, 11290 Legacy Avenue, Suite 210, Palm Beach Gardens, FL 33410 [keyescommercial.com](http://keyescommercial.com)

This information has been secured from sources we believe to be reliable, but we make no representations nor warranties, express nor implied as to the accuracy of the information. References to square footage are approximate. Buyer must verify the information and bears all risks for any inaccuracies.