

PLAZA 75 | PAD

SEC 75TH AVE & INDIAN SCHOOL RD
PHOENIX, AZ 85033

Indian School Road

34,950 VPD

75th Avenue

43,370 VPD

PAD
24,836 SF

PROPERTY SUMMARY

AVAILABLE 24,836 SF

PROPERTY HIGHLIGHTS

- Ground Lease
- Drive-thru capable
- 126,406 total vehicles at intersection
- 57,834 total population

TENANTS



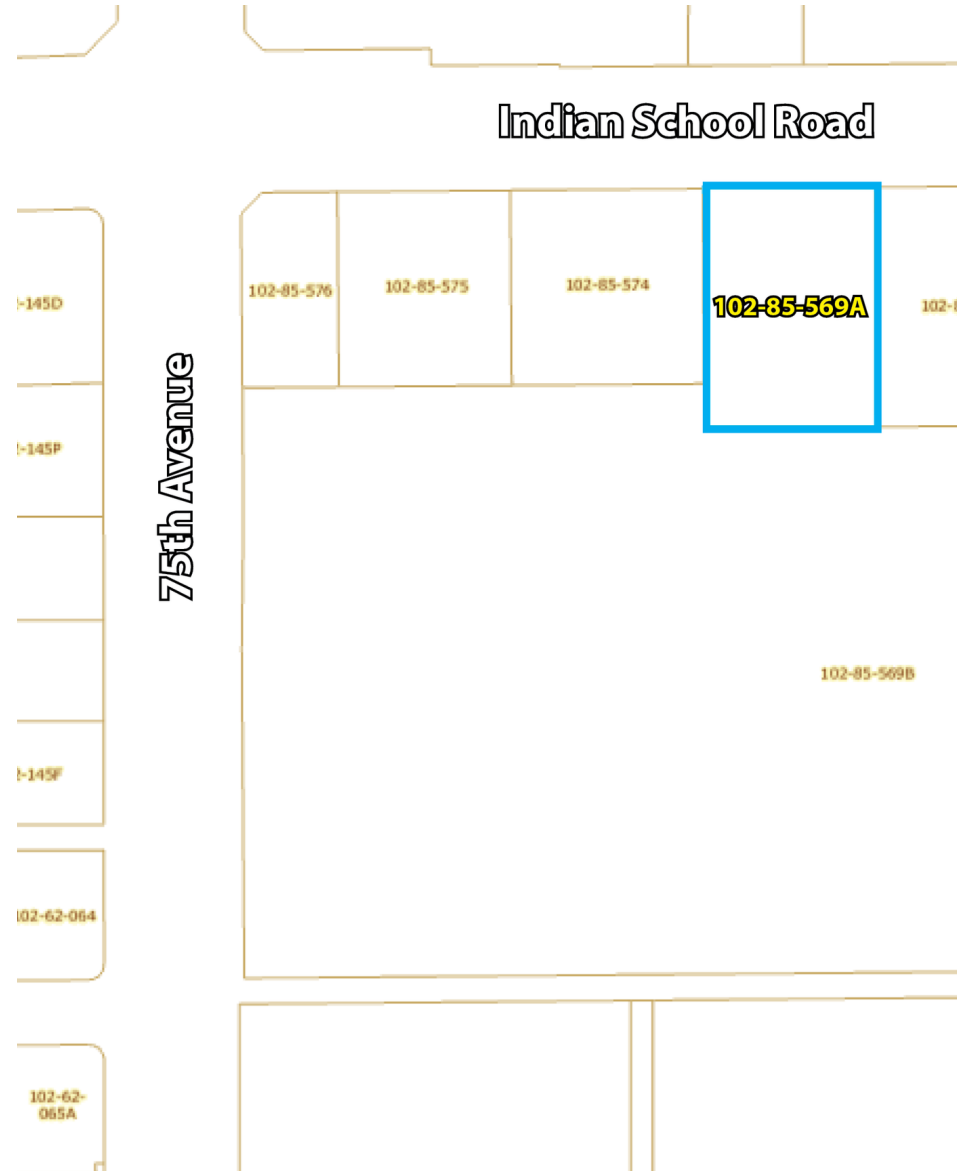
TRAFFIC COUNTS

N 75th Ave: 21,175 VPD

S 75th Ave: 43,370 VPD

E Indian School Rd: 34,950 VPD

W Indian School Rd: 26,911 VPD



SEC 75TH AVENUE & INDIAN SCHOOL ROAD



NATALIE JAAFAR

602.386.5710

njaafar@camcre.com

2701 E. CAMELBACK RD., SUITE #170, PHOENIX, AZ 85016

602.489.7990

WWW.CAMCRE.COM



SITE PLAN



SEC 75TH AVENUE & INDIAN SCHOOL ROAD



NATALIE JAAFAR

602.386.5710

njaafar@camcre.com

2701 E. CAMELBACK RD., SUITE #170, PHOENIX, AZ 85016 | 602.489.7990 | WWW.CAMCRE.COM



DEMOGRAPHICS



POPULATION	1 MILE	3 MILES	5 MILES
Total Population	33,130	217,187	423,253
Average Age	29.0	28.9	29.7
Average Age (Male)	26.7	27.9	28.9
Average Age (Female)	31.6	30.4	30.7



AVG. HH INCOME	1 MILE	3 MILES	5 MILES
Average HH Income	\$52,211	\$59,833	\$59,581
Average House Value	\$139,408	\$154,455	\$157,599



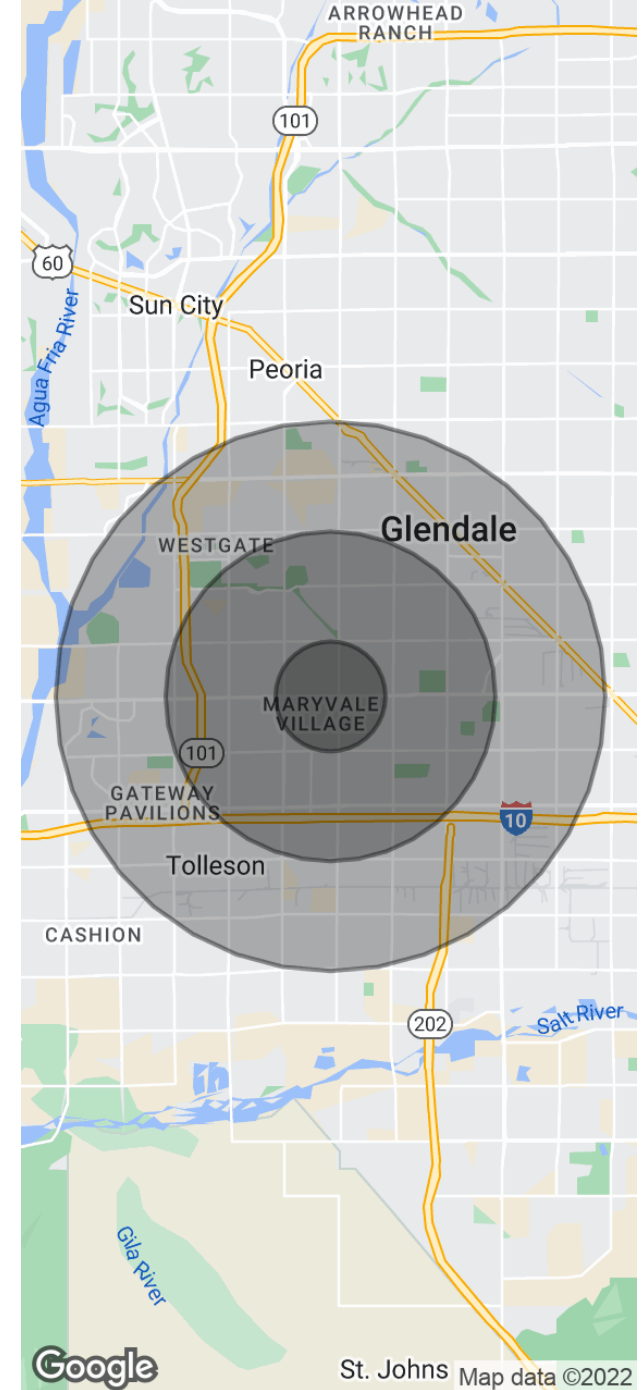
HH UNITS	1 MILE	3 MILES	5 MILES
Total Households	8,810	60,155	124,517
# of Persons per HH	3.8	3.6	3.4



DAYTIME POPULATION	1 MILE	3 MILES	5 MILES
Total Daytime Pop	12,824	90,288	226,622
Workers	4,822	35,575	116,325
Residents	63.3	66.0	42.4



HOUSEHOLDS	1 MILE	3 MILES	5 MILES
2022 Households	8,251	57,834	119,421
2027 Households	8,339	61,002	127,197



SEC 75TH AVENUE & INDIAN SCHOOL ROAD