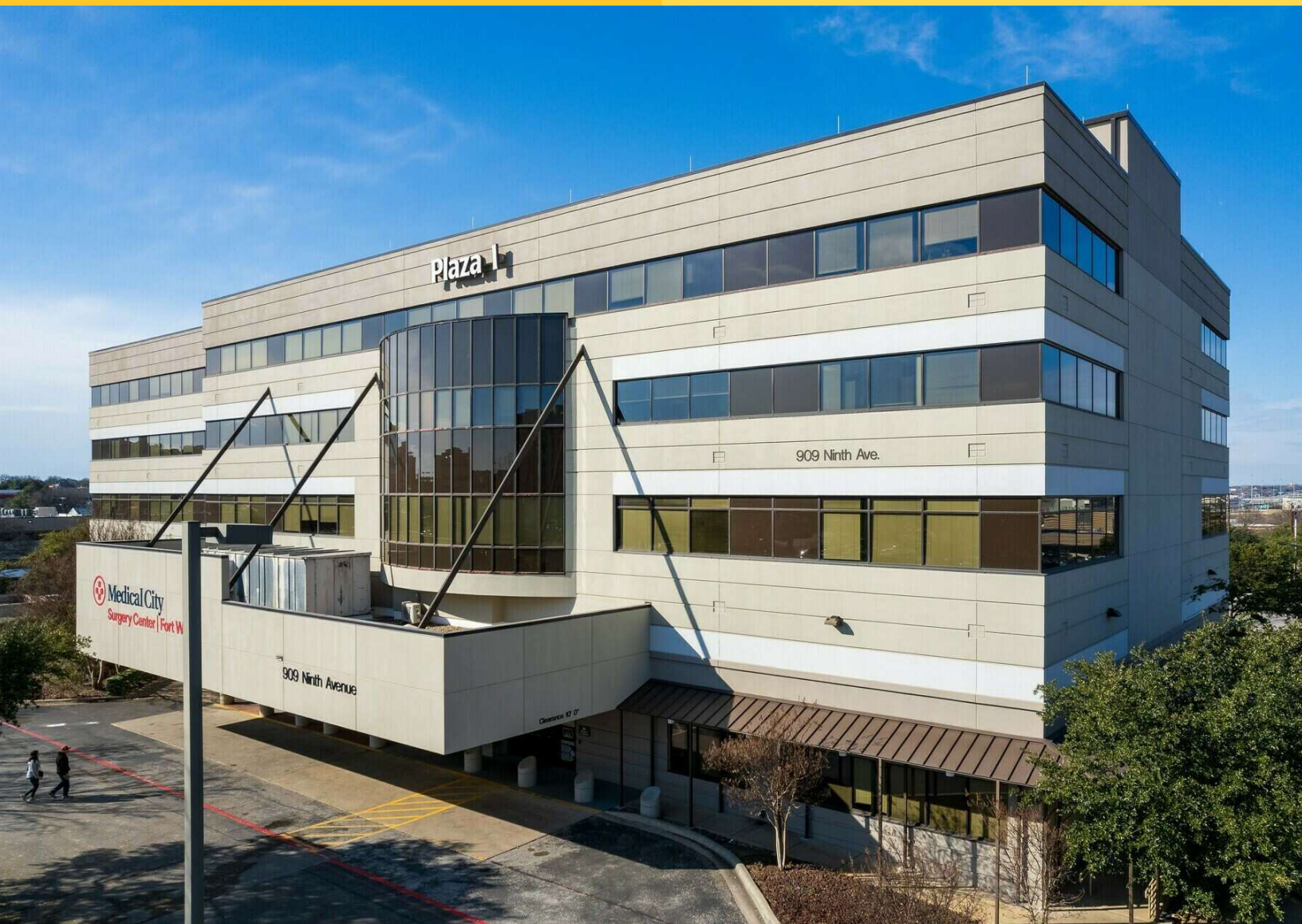


PLAZA MEDICAL CENTER FORT WORTH

909 9th Avenue
Fort Worth, TX 76104

Healthpeak® | DOC
LISTED
NYSE



Leasing Information:
214.461.2300

Banks Newton
214.461.2388
bnewton@lpc.com

Peter Shaw
214.461.2302
PShaw@lpc.com

Elizabeth Madden
214.461.2366
emadden@lpc.com

Lincoln

Lincoln Property Company
8140 Walnut Hill Lane Suite 700
Dallas, TX 75231

www.lpc.com

PLAZA MEDICAL CENTER FORT WORTH

Outpatient Medical For Lease

909 9th Avenue | Fort Worth, TX 76104



Property Overview

Fort Worth Plaza One is a class "A" outpatient medical building with institutional ownership consisting of over 65,000 square feet conveniently located on the campus of Medical City Fort Worth. The property has recently renovated common areas and offers customizable suite options to fit the need of a new or expanding practice. Ownership is offering generous tenant improvement packages for customizable space plans.

Property Highlights

- Excellent tenant mix
- Customizable suites
- Generous TI allowance
- Recent Hospital expansion

Availabilities	SF
208	1,394 SF
210	3,038 SF

Banks Newton

214.461.2388
bnewton@lpc.com

Peter Shaw

214.461.2302
PShaw@lpc.com

Elizabeth Madden

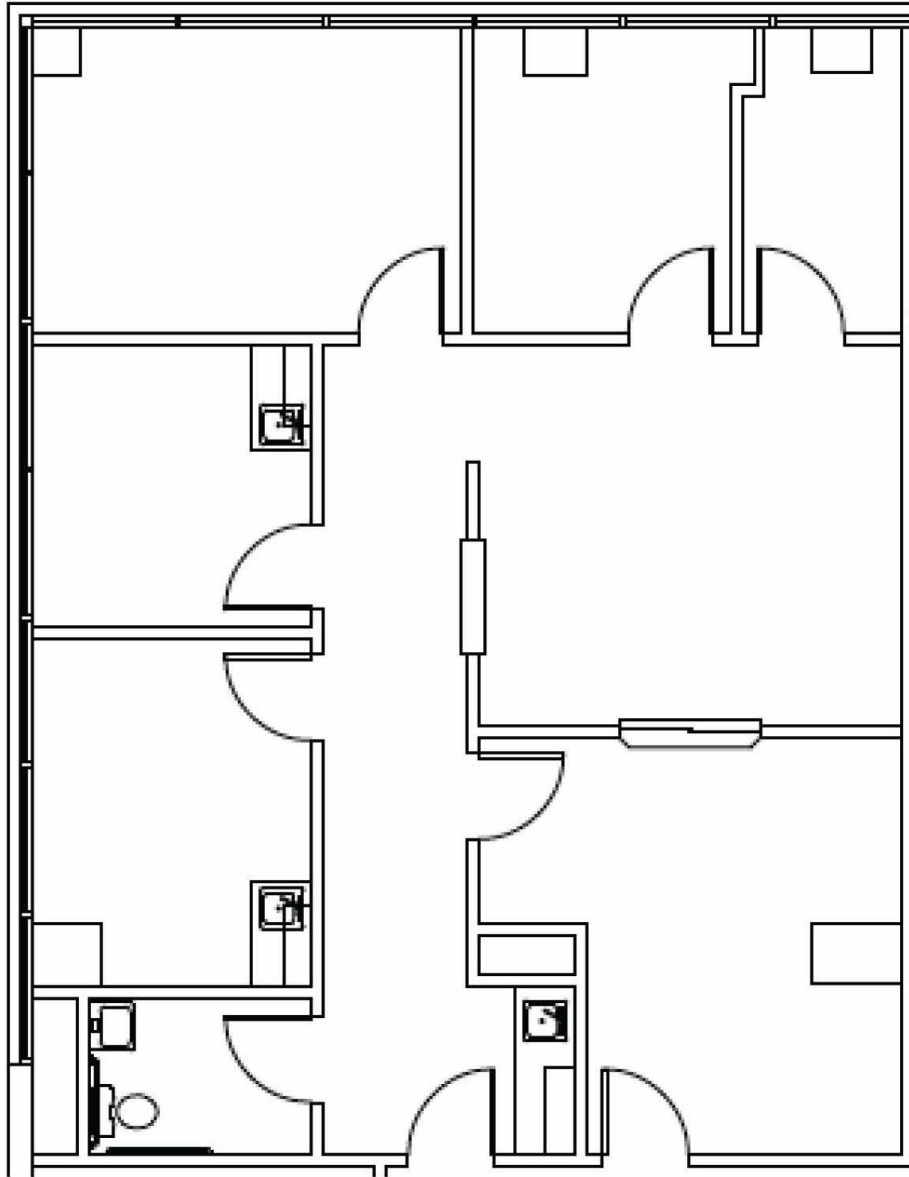
214.461.2366
emadden@lpc.com

Lincoln

PLAZA MEDICAL CENTER FORT WORTH

Suite 208

909 9th Avenue | Fort Worth, TX 76104



Suite

Size

208

1,394 SF

Banks Newton

Peter Shaw

Elizabeth Madden

214.461.2388

214.461.2302

214.461.2366

bnewton@lpc.com

PShaw@lpc.com

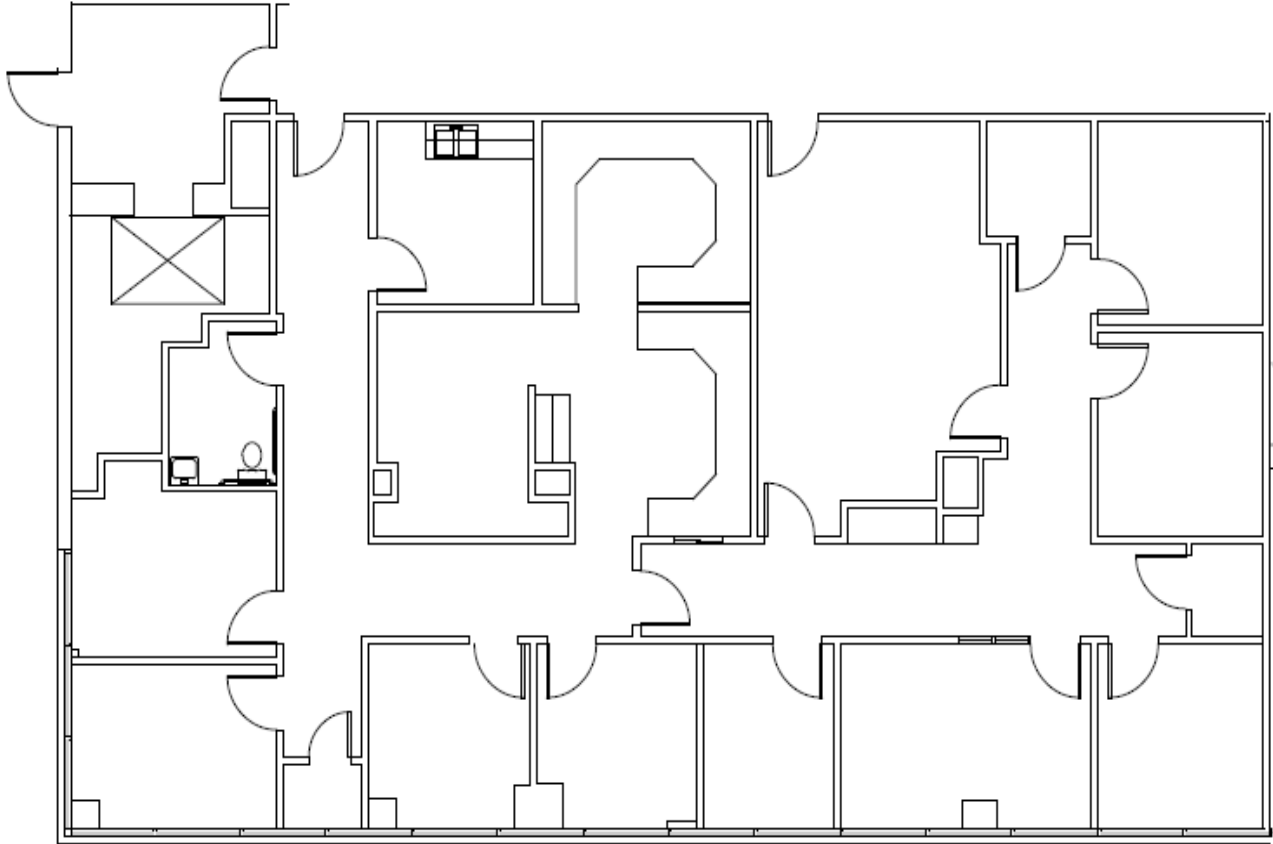
emadden@lpc.com

Lincoln

PLAZA MEDICAL CENTER FORT WORTH

Suite 210

909 9th Avenue | Fort Worth, TX 76104



Suite	Size
210	3,038 SF

Banks Newton
214.461.2388
bnewton@lpc.com

Peter Shaw
214.461.2302
PShaw@lpc.com

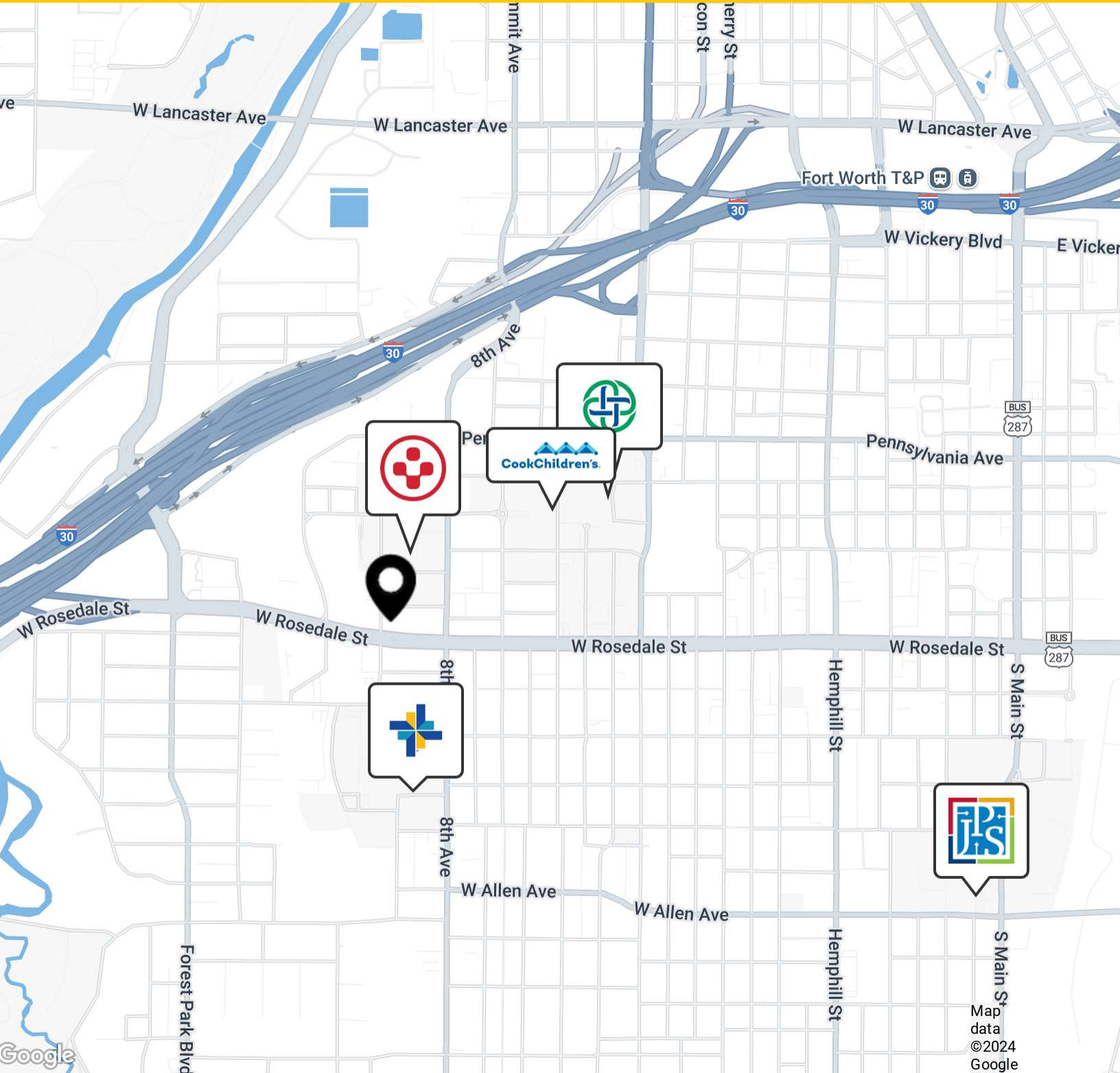
Elizabeth Madden
214.461.2366
emadden@lpc.com

Lincoln

PLAZA MEDICAL CENTER FORT WORTH

Location Map

909 9th Avenue | Fort Worth, TX 76104



Banks Newton

214.461.2388

bnewton@lpc.com

Peter Shaw

214.461.2302

PShaw@lpc.com

Elizabeth Madden

214.461.2366

emadden@lpc.com

Lincoln



PLAZA MEDICAL CENTER FORT WORTH

Healthpeak® | **DOC**
LISTED
NYSE

909 9th Avenue
Fort Worth, TX 76104

Leasing Information:
214.461.2388

Banks Newton
214.461.2388
bnewton@lpc.com

Peter Shaw
214.461.2302
PShaw@lpc.com

Elizabeth Madden
214.461.2366
emadden@lpc.com

Lincoln

Lincoln Property Company
8140 Walnut Hill Lane Suite 700
Dallas, TX 75231

www.lpc.com