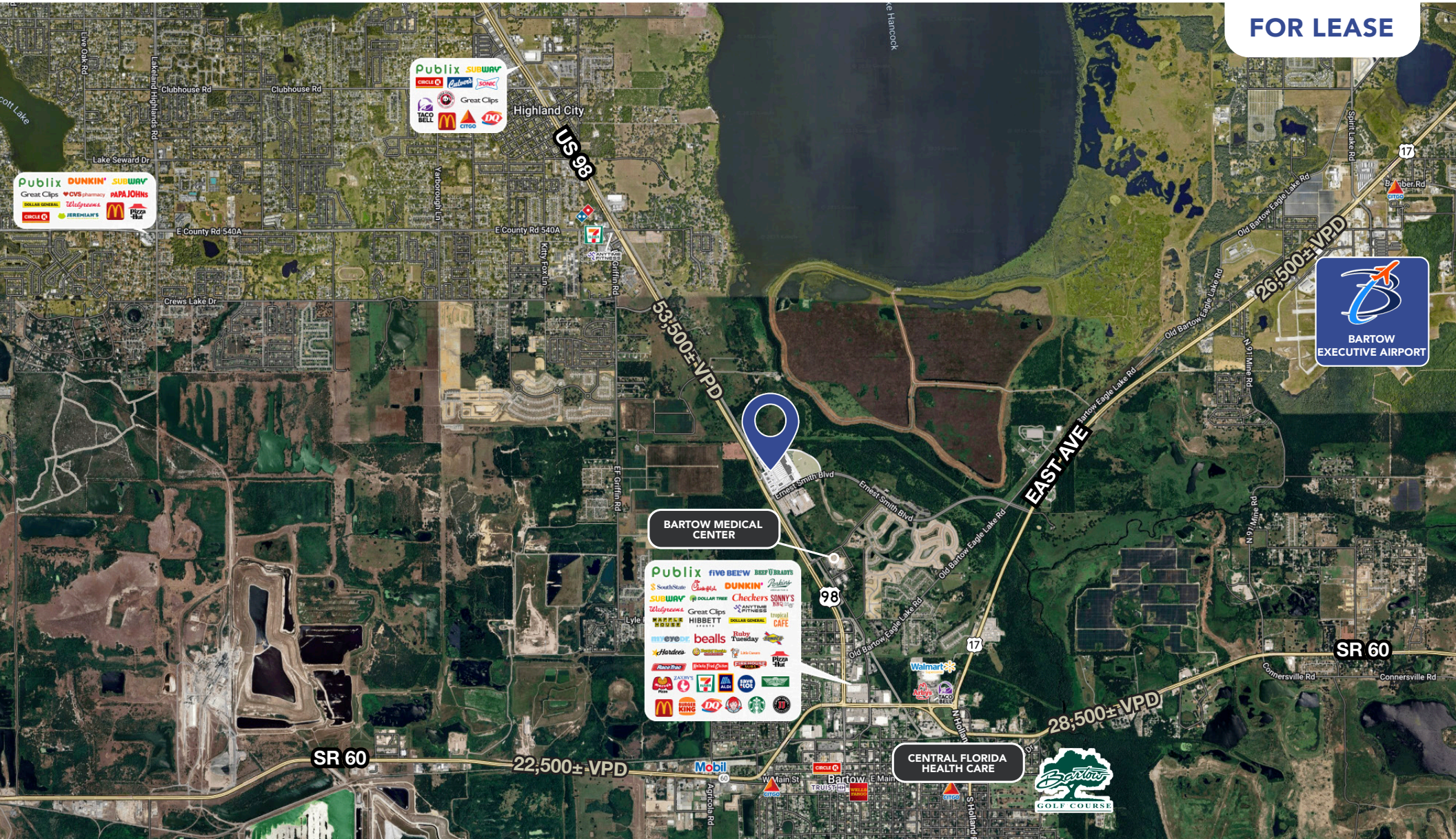


# CORTA COMMONS AT STUART CROSSING

US HIGHWAY 98 N, BARTOW, FL, 33830

FOR LEASE



**Clint Betlock**  
Senior Advisor  
904.629.7541  
Clint.Betlock@TrinityCRE.com

**Jill Brunori**  
Advisor  
843.415.3460  
Jill.Brunori@TrinityCRE.com

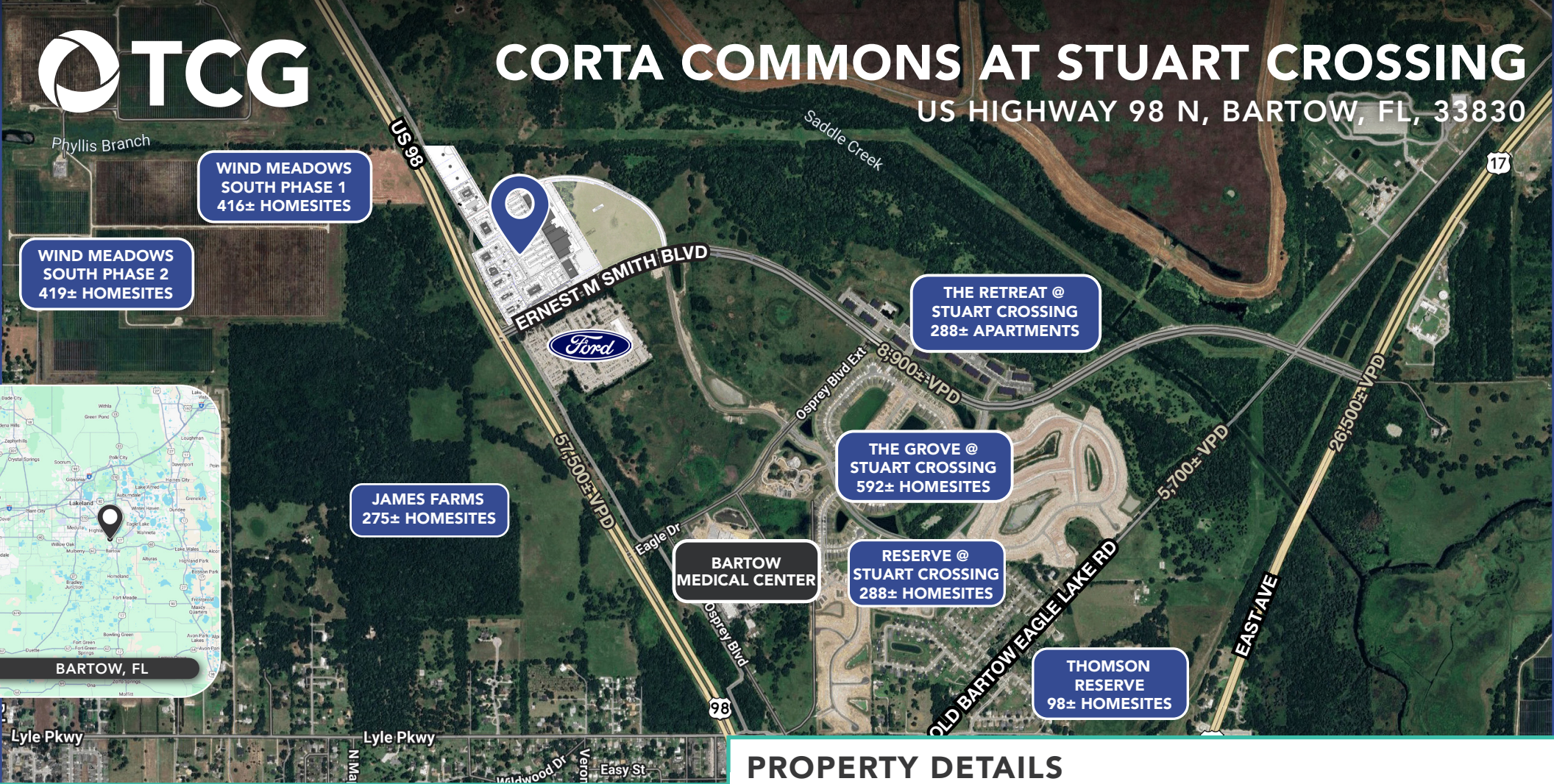






# CORTA COMMONS AT STUART CROSSING

US HIGHWAY 98 N, BARTOW, FL, 33830



## PROPERTY DETAILS

**PRICE** Call for Details

**AVAILABLE** 35.3± AC

### HIGHLIGHTS

CORTA Commons at Stuart Crossing is Bartow's premier new retail destination, located along Hwy 98 and Ernest M. Smith Boulevard. This planned retail development brings together a dynamic mix of national brands, restaurants, and service-oriented retailers designed to serve the rapidly expanding Polk County market.

### LOCATION

The project is strategically positioned to serve both existing Lakeland and Bartow residents as well as the significant future population growth planned directly adjacent to the site. Its convenient access from Hwy 98 and Hwy 17 further enhances connectivity, enabling the site to draw from a broad and diverse trade area.

## 2025 DEMOGRAPHICS

### US HIGHWAY 98 N



#### AVERAGE H.H INCOME

3 MILE	5 MILE	10 MILE
\$111,209	\$119,782	\$103,506



#### POPULATION

20,237	49,802	249,881
--------	--------	---------



#### EMPLOYMENT DENSITY

9,018	17,076	89,118
-------	--------	--------



TrinityCRE.com

© Trinity Commercial Group

*This information is considered accurate, but not guaranteed.*

**Experts in the Market  
Partners in Your Success**

MEMBER OF:





# CORTA COMMONS AT STUART CROSSING

US HIGHWAY 98 N, BARTOW, FL, 33830



**Clint Betlock**  
Senior Advisor  
904.629.7541  
Clint.Betlock@TrinityCRE.com

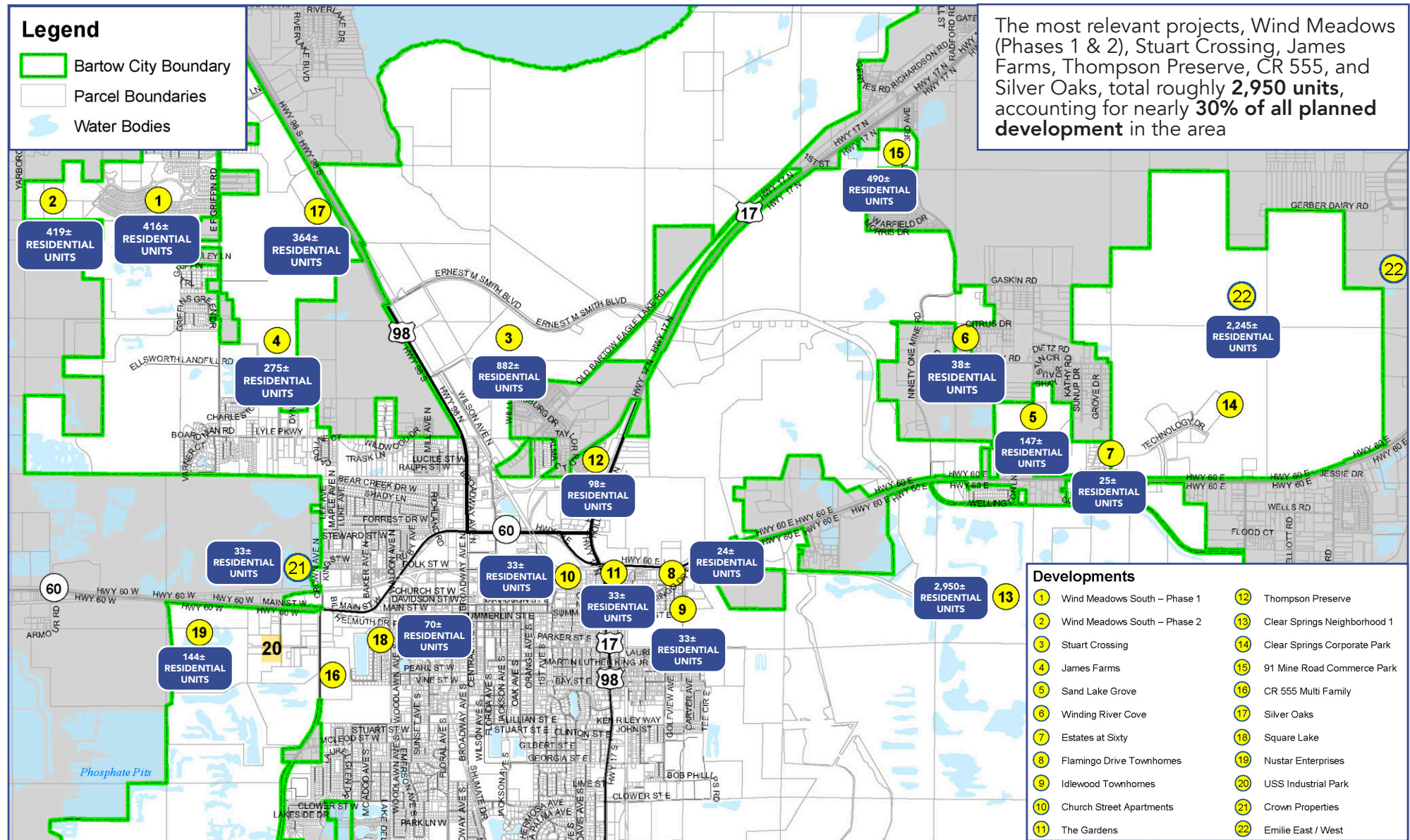
**Jill Brunori**  
Advisor  
843.415.3460  
Jill.Brunori@TrinityCRE.com





# CORTA COMMONS AT STUART CROSSING

US HIGHWAY 98 N, BARTOW, FL, 33830



TrinityCRE.com  
© Trinity Commercial Group  
This information is considered accurate, but not guaranteed.

Experts in the Market  
Partners in Your Success

MEMBER OF:  
**SITE SOURCE**  
RETAIL BROKER NETWORK