

1313-1317 SEVEN MILE ROAD  
DETROIT, MICHIGAN

RETAIL FOR SALE OR LEASE  
5,364 Square Feet Available



**SIGNATURE  
ASSOCIATES**  
KNOW SIGNATURE | KNOW RESULTS

**TWO BUILDING PACKAGE**



## PROPERTY FEATURES

- 5,364 square feet available
- 12' – 14' clear height
- (2) grade level doors
- Zoned B-4
- Two buildings – both have been meticulously maintained
- Excellent landscaper building or auto garage
- Ample parking
- 220 volts, 3-phase power
- Lease Rate: \$2,750/month Gross
- Sale Price: Contact Broker



For more information, please contact:

**JOE STACK**  
(248) 359 0615  
jstack@signatureassociates.com

**MARVIN PETROUS**  
(248) 359 0647  
mpetrous@signatureassociates.com

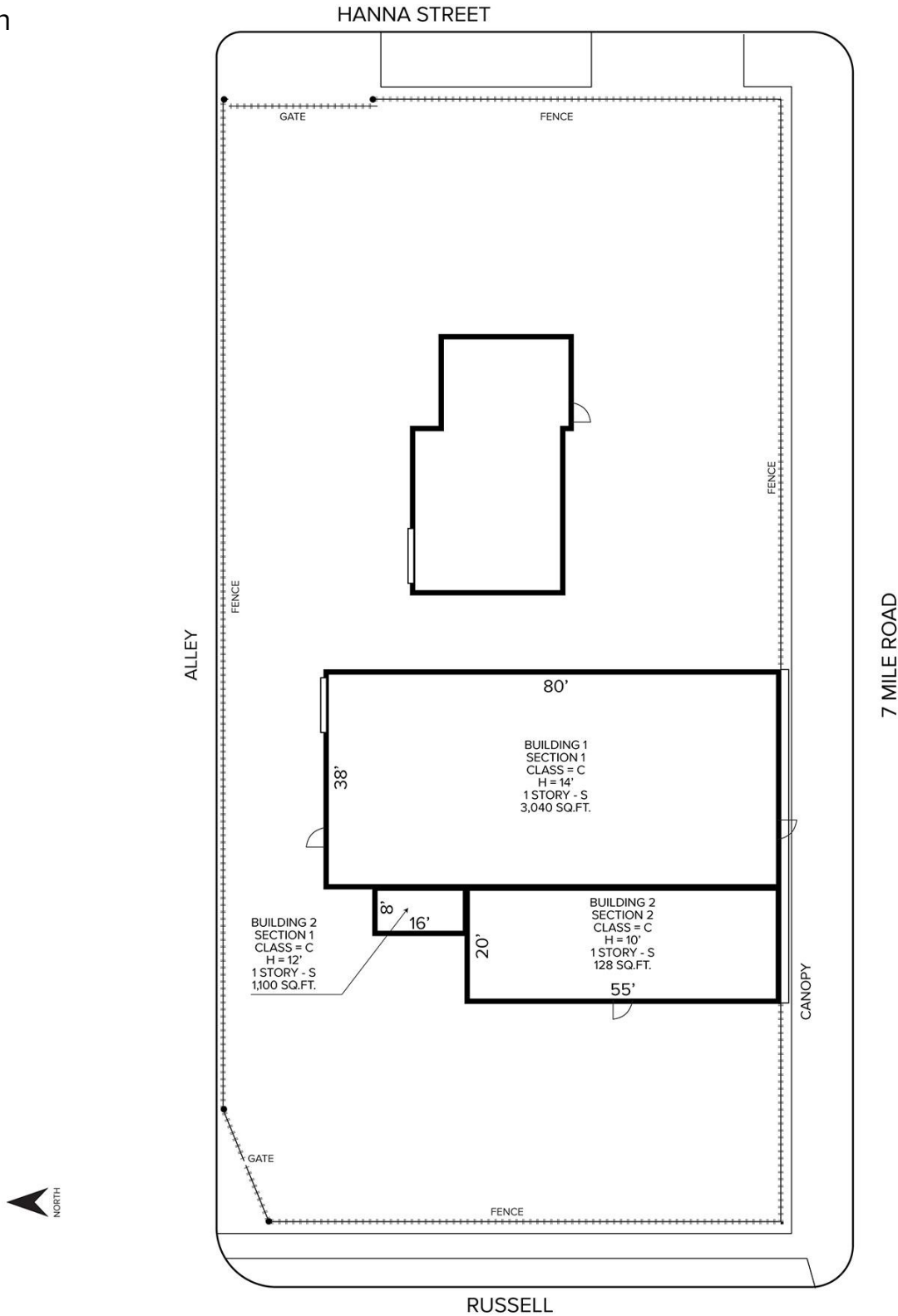
**SIGNATURE ASSOCIATES**  
One Towne Square, Suite 1200  
Southfield, MI 48076  
www.signatureassociates.com

# 1313-1317 Seven Mile Road – Detroit, Michigan

Retail For Sale or Lease

5,364  
Square Feet  
AVAILABLE

## Site Plan



For more information, please contact:

**JOE STACK**  
(248) 359 0615  
jstack@signatureassociates.com

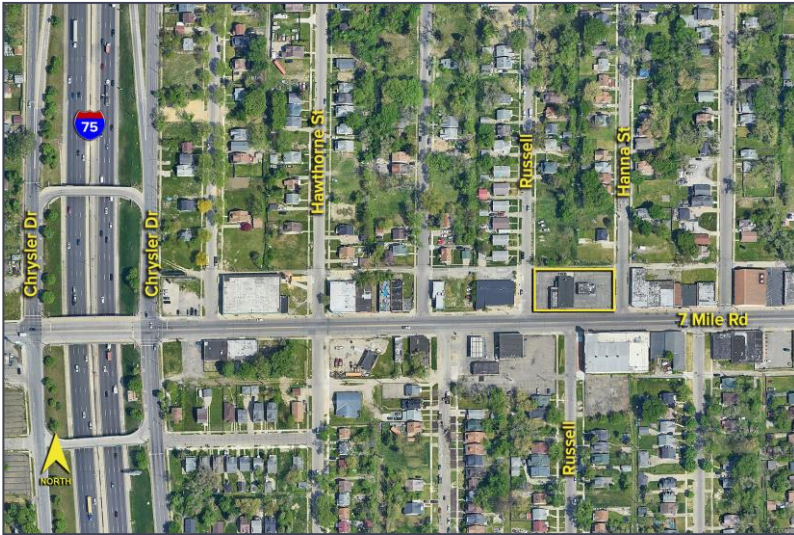
**MARVIN PETROUS**  
(248) 359 0647  
mpetrous@signatureassociates.com

**SIGNATURE ASSOCIATES**  
One Towne Square, Suite 1200  
Southfield, MI 48076  
www.signatureassociates.com

# 1313-1317 Seven Mile Road – Detroit, Michigan

## Retail For Sale or Lease

5,364  
Square Feet  
AVAILABLE

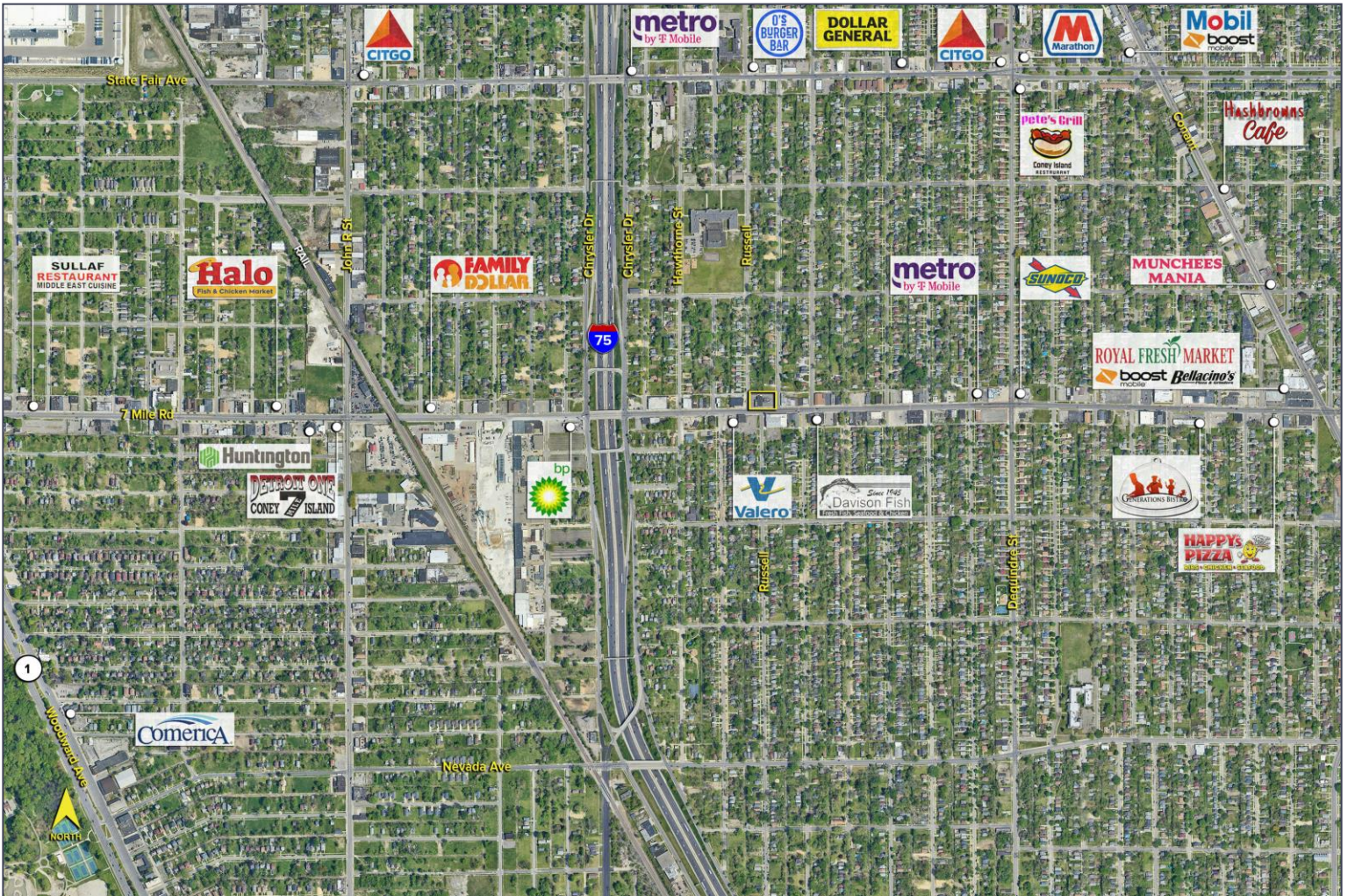


### DEMOGRAPHICS

	POPULATION	MED. HH INCOME
1 MILE	12,990	\$41,388
3 MILE	132,128	\$53,983
5 MILE	371,329	\$56,698

### TRAFFIC COUNTS (TWO-WAY)

12,806	7 Mile Rd. E. of I-75
10,502	7 Mile Rd. W. of I-75
163,411	I-75 N. of 7 Mile Rd.
168,129	I-75 S. of 7 Mile Rd.



For more information, please contact:

**JOE STACK**  
(248) 359 0615  
jstack@signatureassociates.com

**MARVIN PETROUS**  
(248) 359 0647  
mpetrous@signatureassociates.com

**SIGNATURE ASSOCIATES**  
One Towne Square, Suite 1200  
Southfield, MI 48076  
www.signatureassociates.com