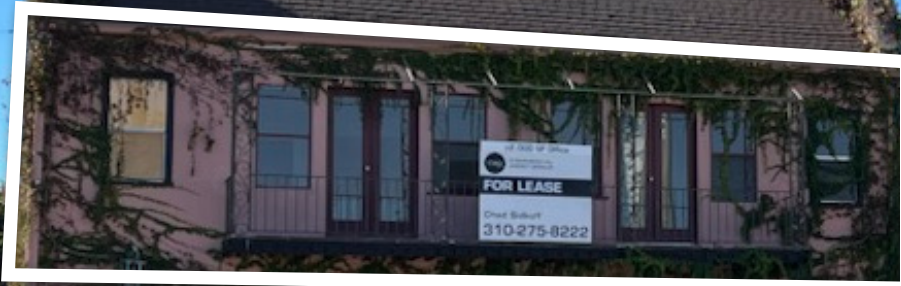


# OFFICE SPACE ON LA CIENEGA BLVD FOR LEASE



CLICK FOR  
PROPERTY  
VIDEO



931 N. LA CIENEGA BLVD  
LOS ANGELES, CA 90069



COMMERCIAL  
ASSET GROUP

These materials are based on information and content provided by others, which we believe are accurate. No guarantee, warranty or representation is made by Commercial Asset Group, Inc. or its personnel. All interested parties must independently verify accuracy and completeness. As well, any projections, assumptions, opinion, or estimates are used for example only and do not represent the current or future performance of the identified property. Your tax, financial, legal and toxic substance advisors should conduct a careful investigation of the property and its suitability for your needs, including land use limitations. The property is subject to prior lease, sale, change in price, or withdrawal from the market without notice.

## **LEASE RATE**

\$6,500/MONTH, MG

## **SPACE SIZE**

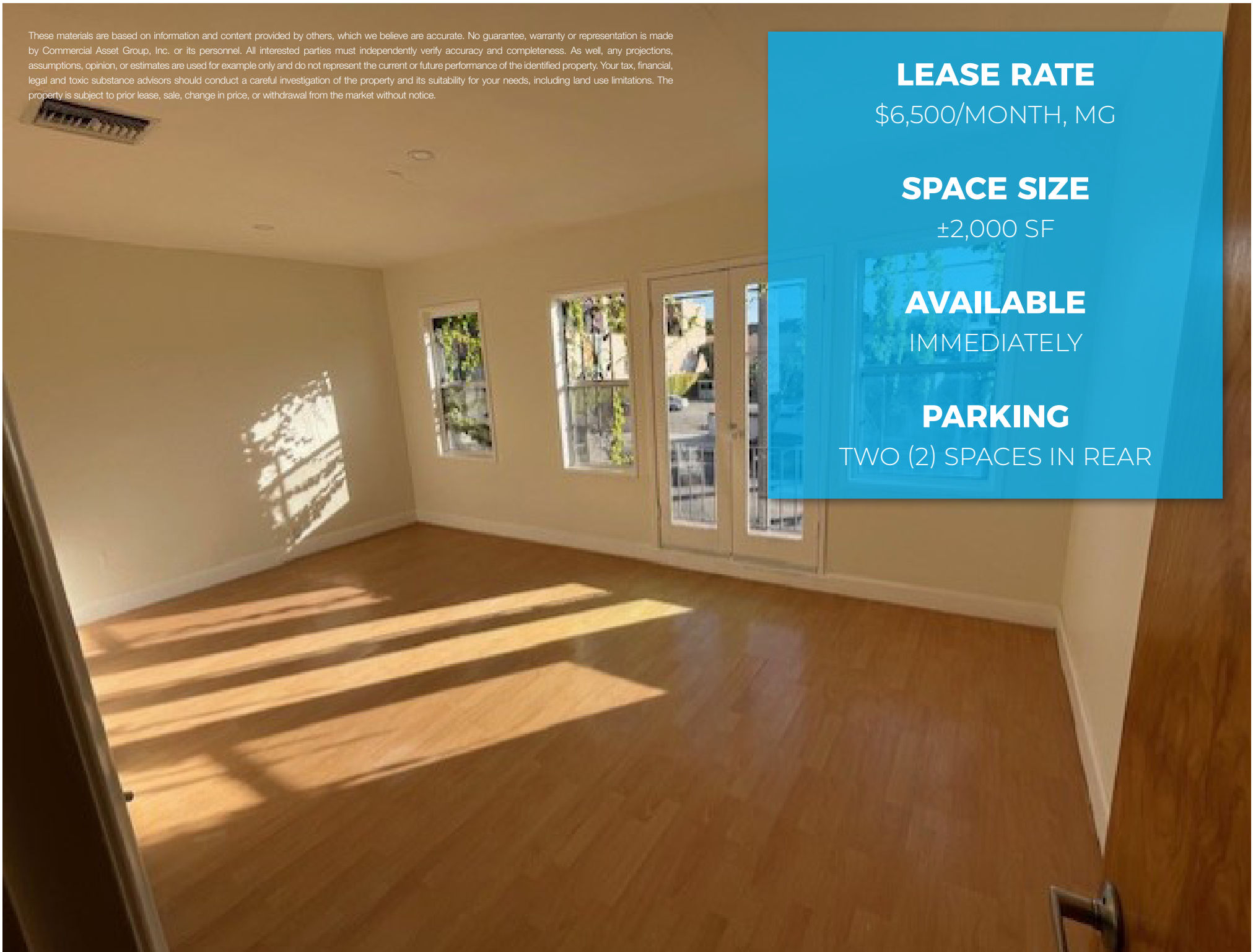
±2,000 SF

## **AVAILABLE**

IMMEDIATELY

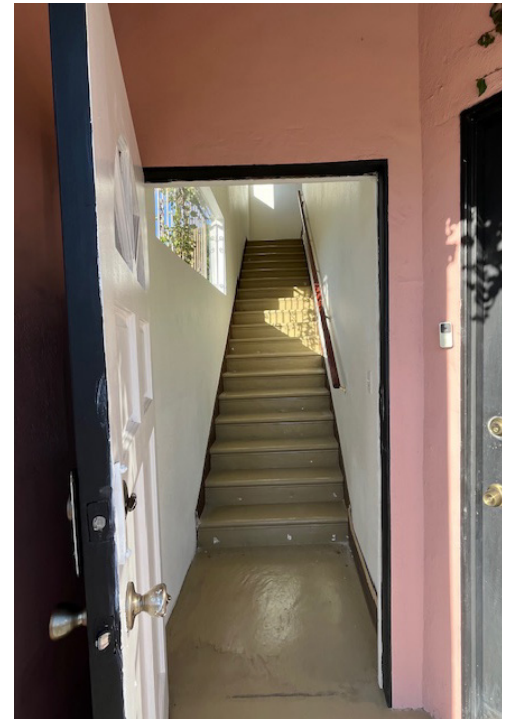
## **PARKING**

TWO (2) SPACES IN REAR

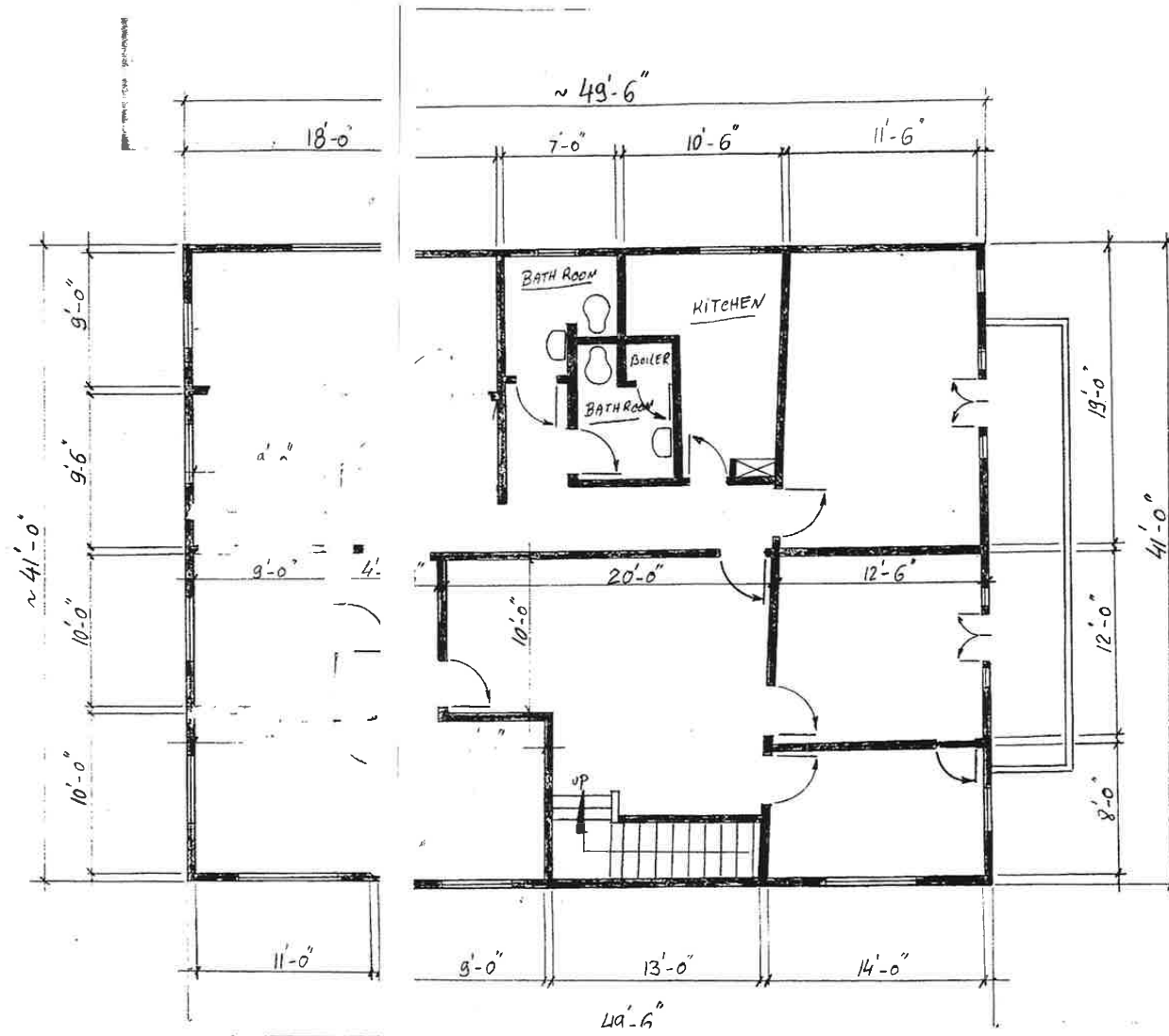




# INTERIOR PHOTOS



# FLOOR PLAN





# AERIAL







# DEMOGRAPHICS

---

## TOTAL POPULATION

1 MILE: 38,086  
3 MILE: 159,330  
5 MILE: 289,335

---

## AVERAGE HOUSEHOLD INCOME

1 MILE: \$129,034  
3 MILE: \$125,951  
5 MILE: \$122,231

---

## MEDIAN AGE

1 MILE: 43.1  
3 MILE: 42.7  
5 MILE: 42.1

---

## WALK SCORE

92





COMMERCIAL  
ASSET GROUP



**CHAD SIDKOFF**

MANAGING DIRECTOR

P 310.272.7392

E CSIDKOFF@CAGRE.COM

LIC. 01875412

**COMMERCIAL ASSET GROUP**

1801 CENTURY PARK EAST, STE 1550

LOS ANGELES, CA 90067

P 310.275.8222 F 310.275.8223

WWW.CAGRE.COM LIC. 01876070