



10225 Chapman Hwy

Seymour, Tennessee 37865

Property Highlights

- 5,000 SF former bank building/restaurant
- High visibility with 28,000+ cars per day on Chapman Hwy
- Ample dedicated parking spaces
- Open layout for flexible use
- Well-maintained property
- Prominent signage opportunity
- Modern exterior and interior finishes
- Convenient access from Chapman Hwy

Property Overview

Introducing a prime leasing opportunity at 10225 Chapman

Offering Summary

Lease Rate:	\$14.50 SF/yr (NNN)
Building Size:	5,882 SF
Available SF:	5,882 SF

Demographics 1 Mile 5 Miles 10 Miles

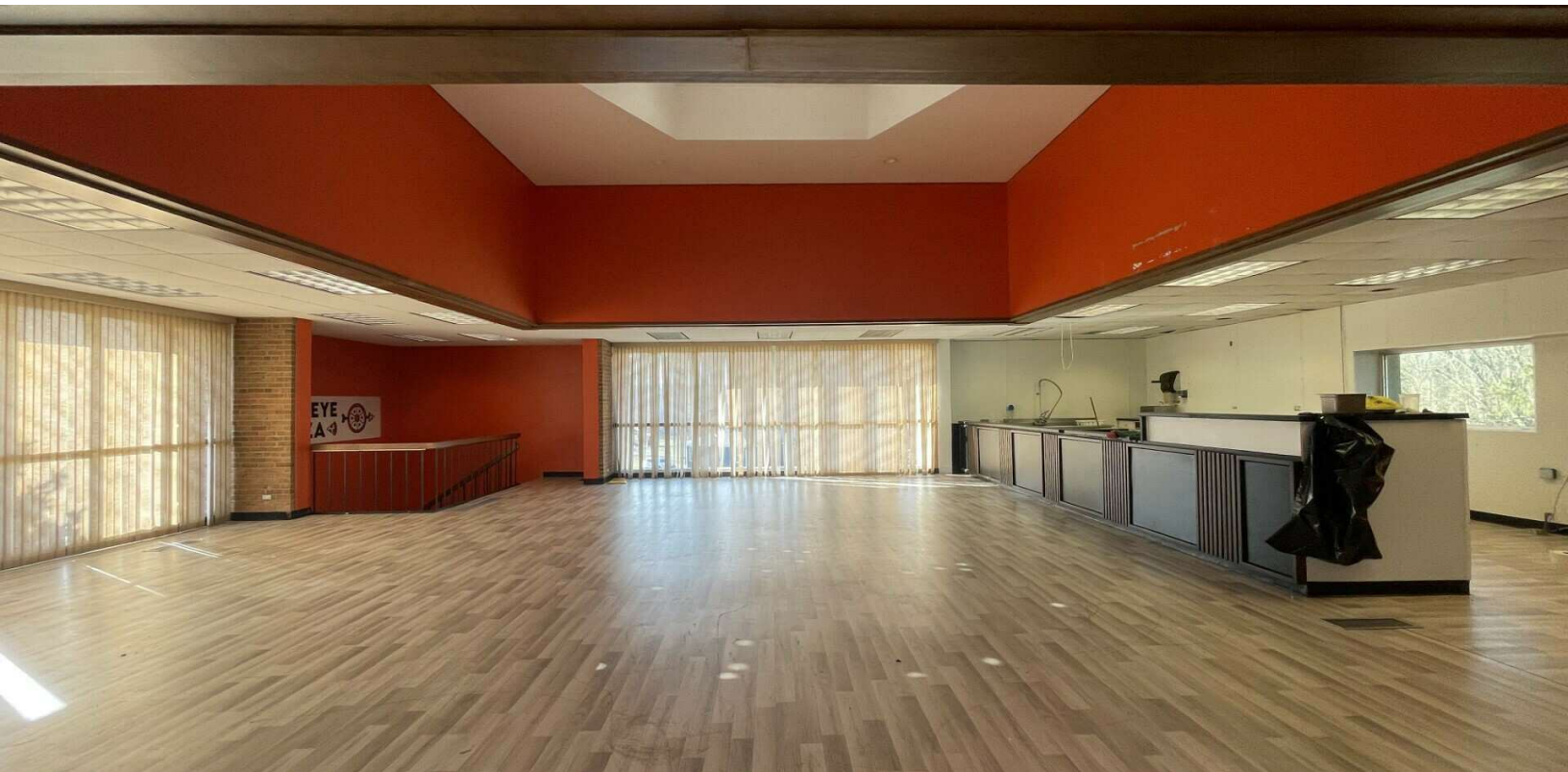
Total Households	809	13,231	63,864
Total Population	1,954	32,046	141,175
Average HH Income	\$60,392	\$69,911	\$56,037

For More Information

Mary Ellen Kilburn

O: 865 531 6400

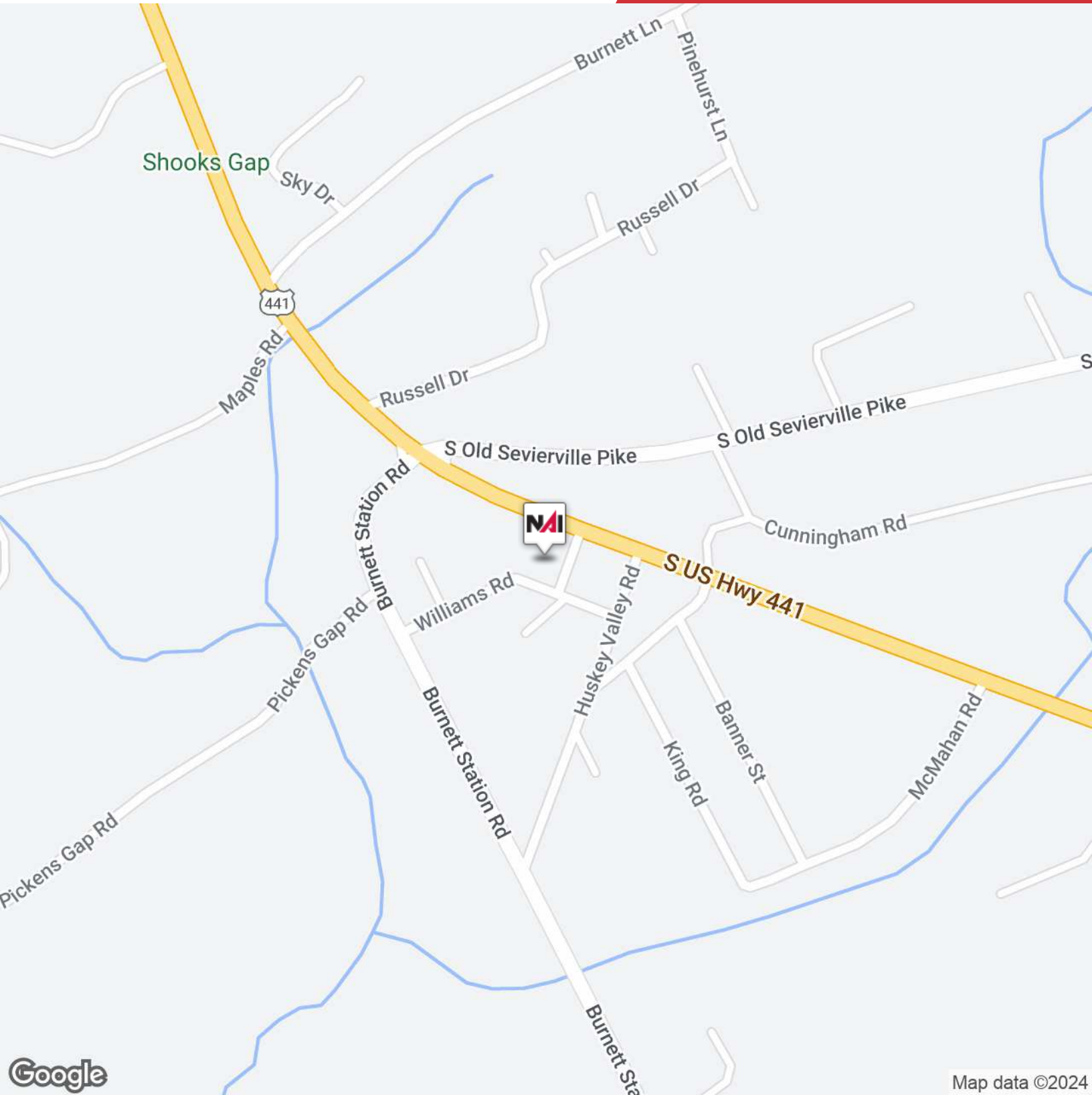
mekilburn@koellamoore.com

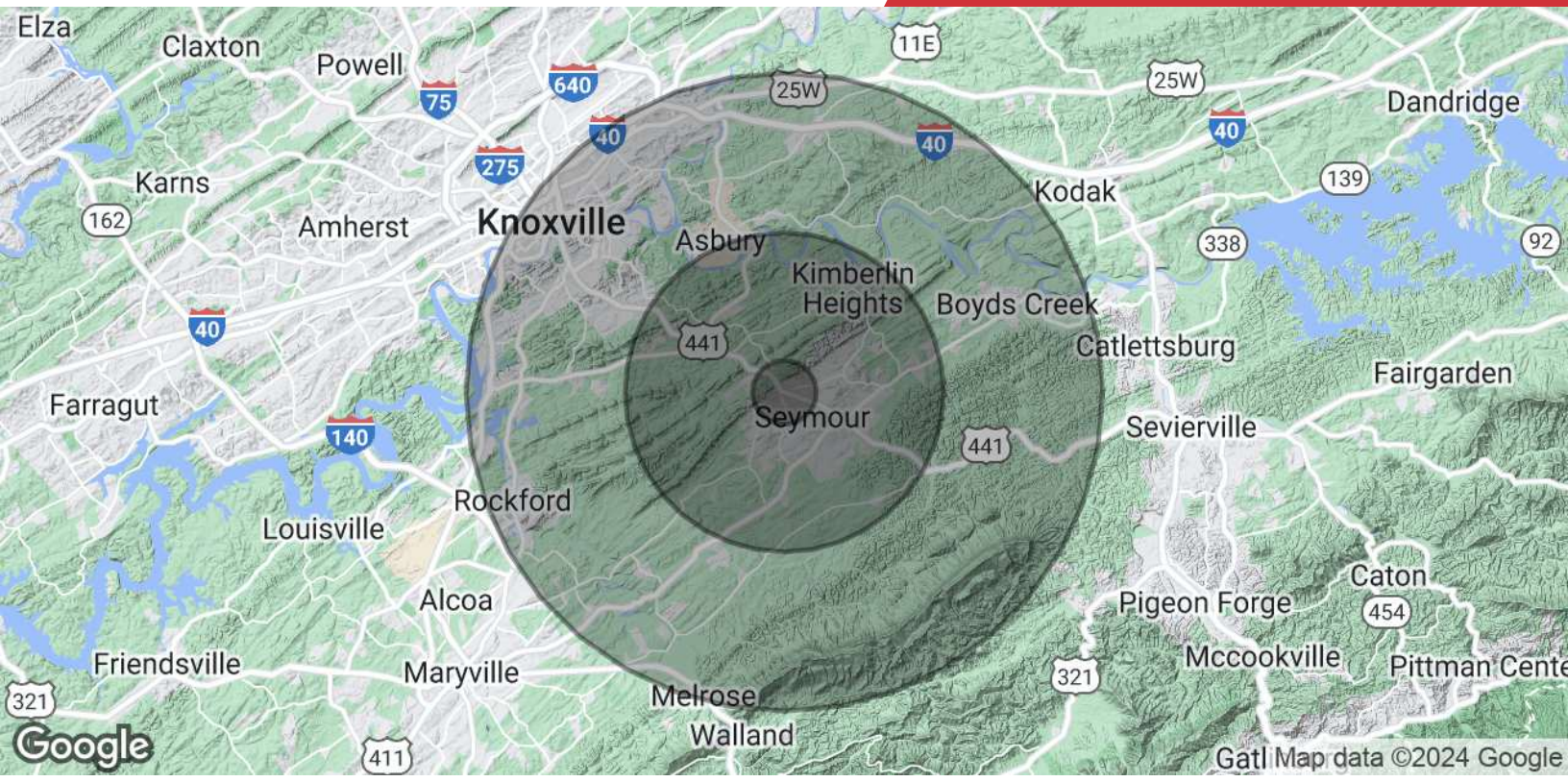


NO WARRANTY OR REPRESENTATION, EXPRESS OR IMPLIED, IS MADE AS TO THE ACCURACY OF THE INFORMATION CONTAINED HEREIN, AND THE SAME IS SUBMITTED SUBJECT TO ERRORS, OMISSIONS, CHANGE OF PRICE, RENTAL OR OTHER CONDITIONS, PRIOR SALE, LEASE OR FINANCING, WITHDRAWAL WITHOUT NOTICE, OR ANY SPECIAL LISTING CONDITIONS IMPOSED BY OUR PRINCIPALS. NO WARRANTIES OR REPRESENTATIONS ARE MADE AS TO THE CONDITION OF THE PROPERTY OR ANY HAZARDS CONTAINED THEREIN, UNLESS THERE IS AN AGREEMENT STIPULATING OTHERWISE, THE AFFILIATE BROKERS OR BROKERS NAMED WITHIN REPRESENT THE OWNER OR LANDLORD.

255 N Peters Road, Suite 101
Knoxville, TN 37923
865 531 6400 tel
koellamoore.com







Population	1 Mile	5 Miles	10 Miles
Total Population	1,954	32,046	141,175
Average Age	45.1	40.5	38.3
Average Age (Male)	42.3	37.9	36.9
Average Age (Female)	47.2	41.8	39.4
Households & Income	1 Mile	5 Miles	10 Miles
Total Households	809	13,231	63,864
# of Persons per HH	2.4	2.4	2.2
Average HH Income	\$60,392	\$69,911	\$56,037
Average House Value	\$185,837	\$189,592	\$160,828

* Demographic data derived from 2020 ACS - US Census



Mary Ellen Kilburn

Senior Advisor

mekilburn@koellamoore.com
Direct: 865.531.6400 | Cell: 865.567.8515

Professional Background

Mary Ellen is a Senior Advisor with NAI Koella | RM Moore. Mary Ellen specializes in site selection for Entertainment and Experiential Retail projects along with Landlord and Tenant Representation in tourism markets. Prior to joining NAI she worked in managing sales, marketing, and leasing of family entertainment development projects. She also served as Commercial Real Estate and Business Development Specialist for The Mountain Mile Entertainment District based in Pigeon Forge, Tennessee where she managed a full range of daily operations including project management, leasing and financial oversight for commercial properties in East Tennessee and North Carolina, including several national retail chains. Mary Ellen began her career in the consumer package goods food and beverage industry with roles in operations and sales management including market and territory management for Frito Lay.

Education

B.S. in Marketing from Louisiana State University

Memberships

TREC

KAAR

International Conference of Shopping Centers

International Association of Amusement Parks & Attractions

NAI Koella | RM Moore
255 N Peters Road, Suite 101
Knoxville, TN 37923
865.531.6400