

FOR LEASE

Owned and Operated by



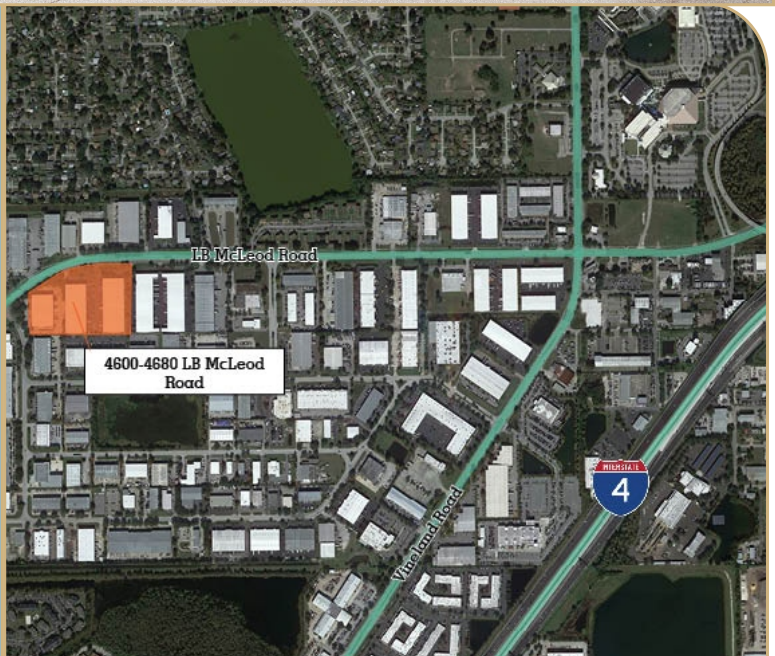
LB McLeod

4600 - 4680 LB McLeod Road, Orlando, FL 32811

4670 LB McLeod Rd - 8,000 - 25,000± sf



LB McLeod consists of 3 office/warehouse buildings totaling 208,377± sf in the 33rd Street Industrial Park. Close proximity to Interstate 4, Kirkman Road, John Young Parkway, International Drive and the Florida Turnpike, makes an ideal location for distribution.



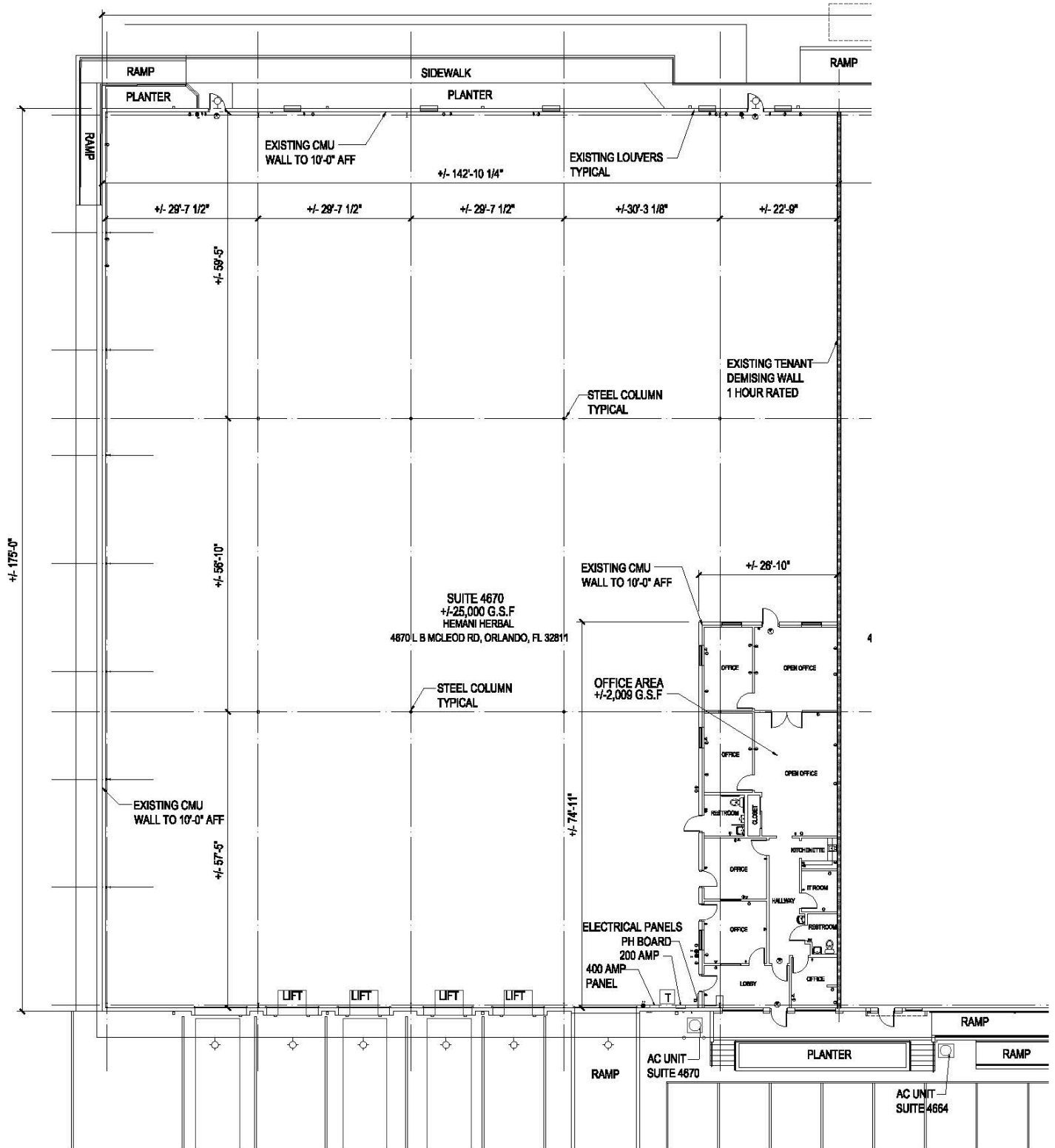
**LEASING INFO
& CONTACT**

Lisa Bailey, SIOR

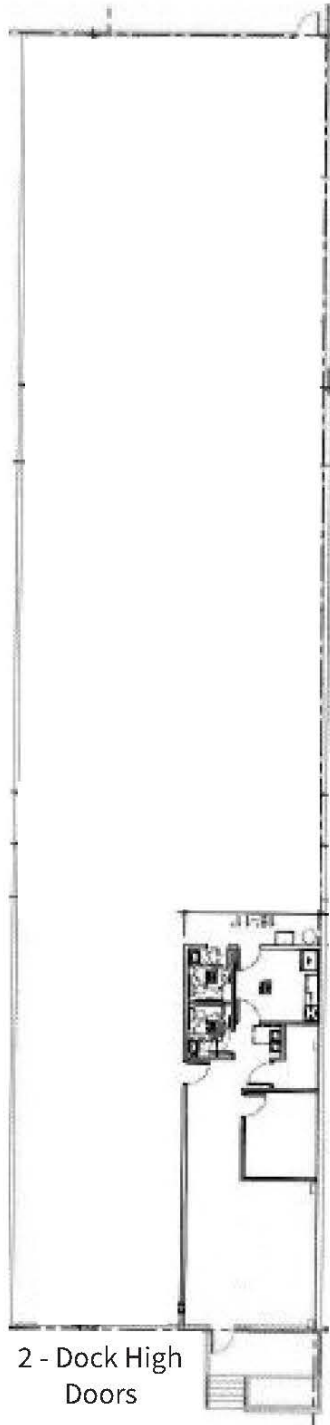
(407) 440-6645 / lisa.bailey@avisonyoung.com

**AVISON
YOUNG**

4670 LB McLeod Road - 25,000 sf
Warehouse/Office Space



4640 LB McLeod Road - 8,000 sf
Warehouse/Office Space



2 - Dock High
Doors