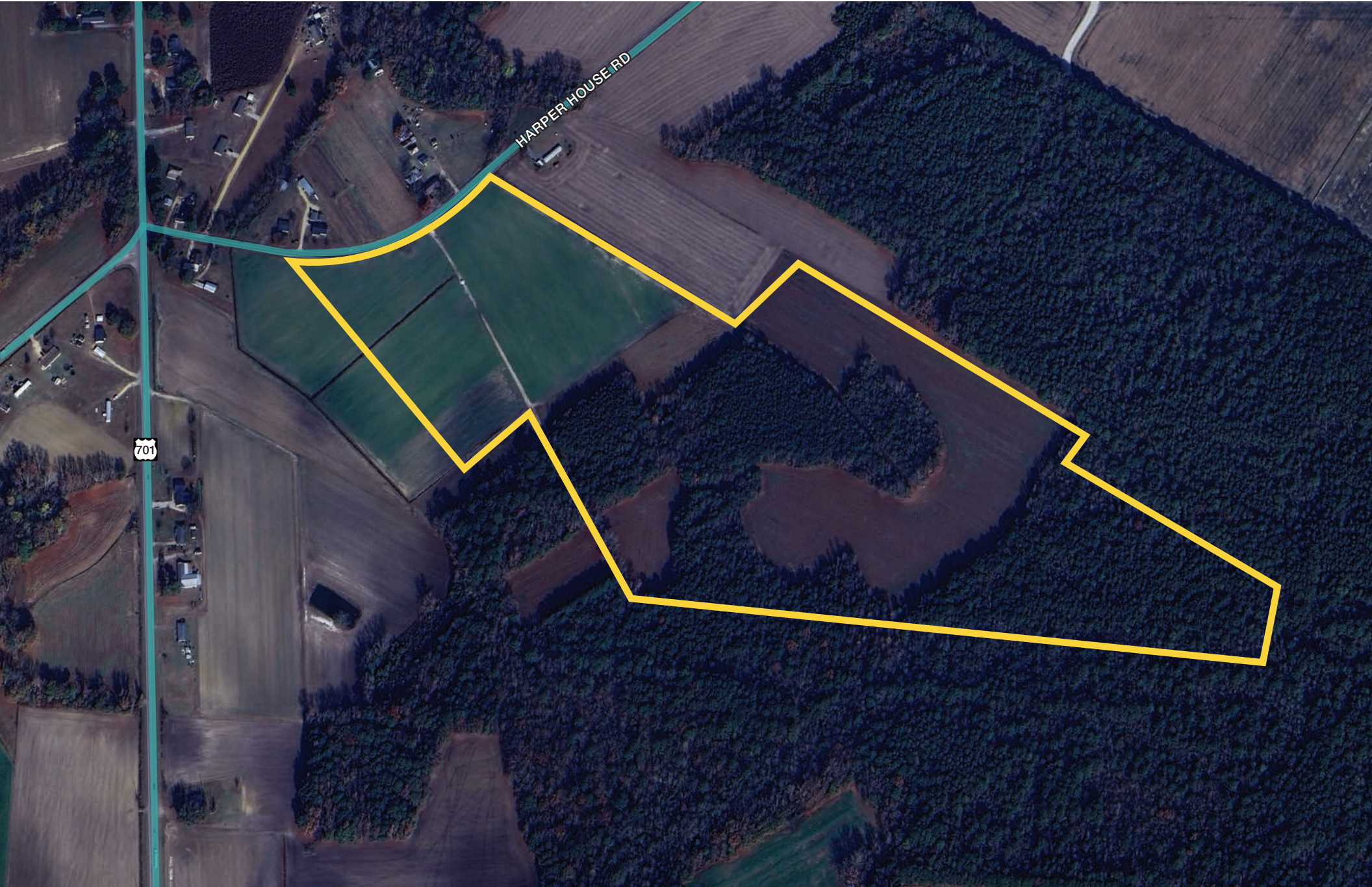


JOHNSTON COUNTY

64.45 ACRES | RESIDENTIAL

LAND
FOR
SALE



HIGHLIGHTS

Great Johnston County land opportunity with approximately 35 tillable acres and remaining in timber. Ideal for hobby farm, long term agricultural investment or recreational/hunting land.

ADDRESS Harper House Rd.
Newton Grove, NC 28366
<https://maps.app.goo.gl/UJgpvQKaYvR3RiC3A>

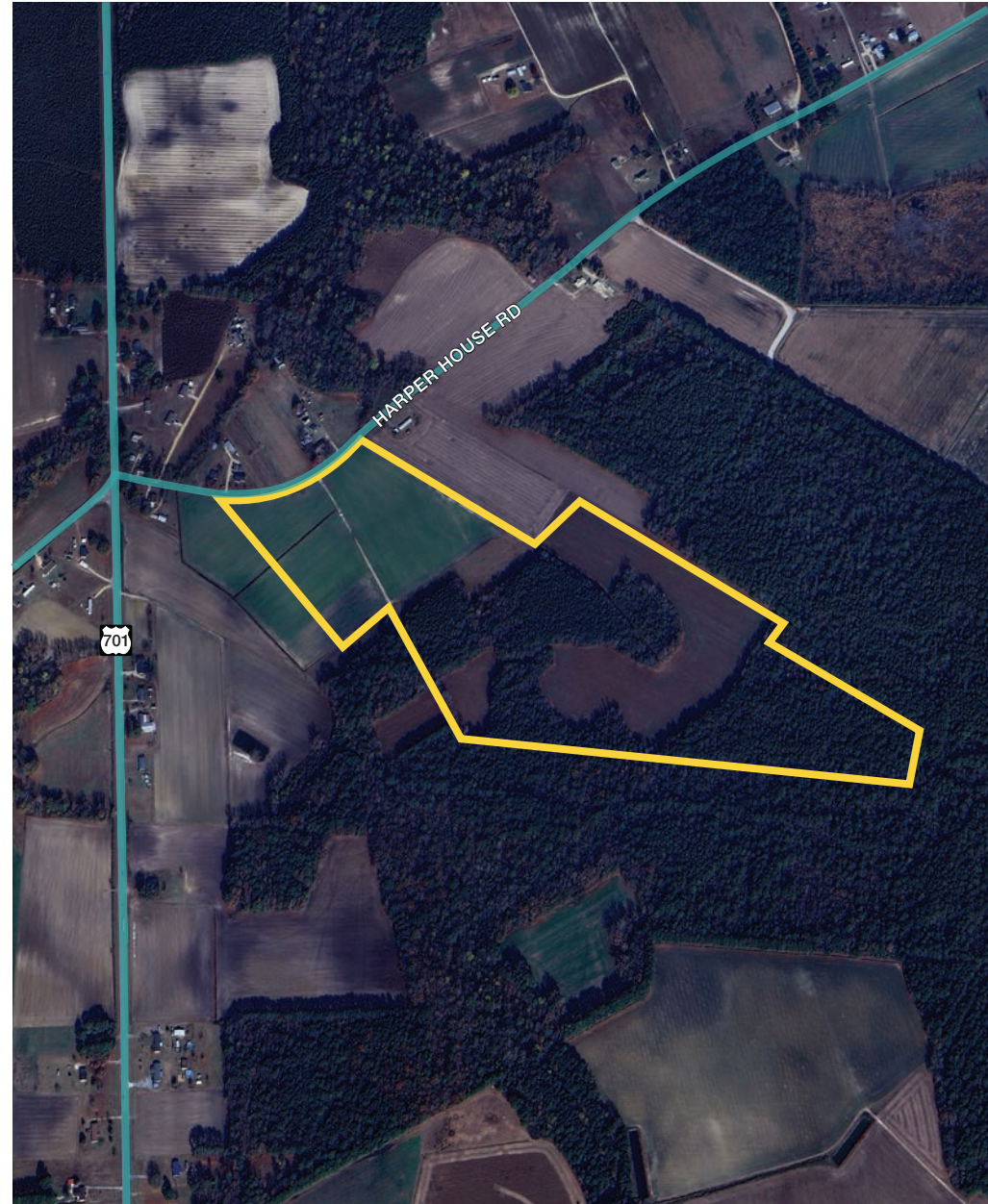
ACRES 64.45 acres

PARCEL 02K18-024 - Johnston County

ZONING AR
[ZONING ORDINANCE \(Johnston County\)](#)

PRICE \$7,500/acre

FEATURES Frontage along Harper House Road
Ideal recreation/hunting site



CONTACT

ROB GRIFFIN | 919.281.2318 | rgriffin@triprop.com

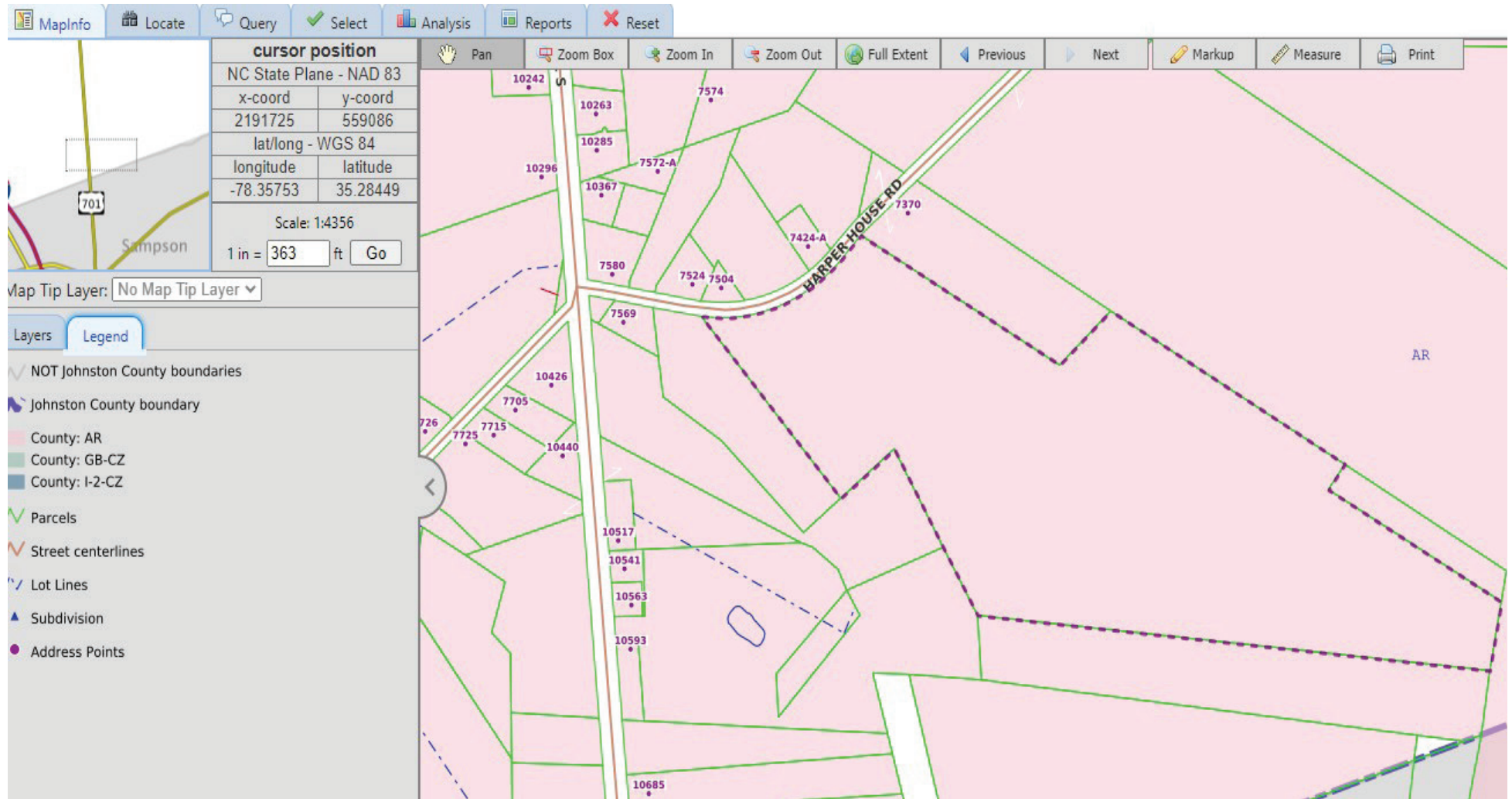
ED BROWN, SIOR, CCIM | 919.714.7116 | ebrown@triprop.com

All information provided herein is from sources deemed reliable. However, all information is subject to verification. NAI Tri Properties does not independently verify nor warrant the accuracy of the information.

NAI TRI PROPERTIES

ZONING

CURRENT LAND USE MAP - ZONED AR



CONTACT

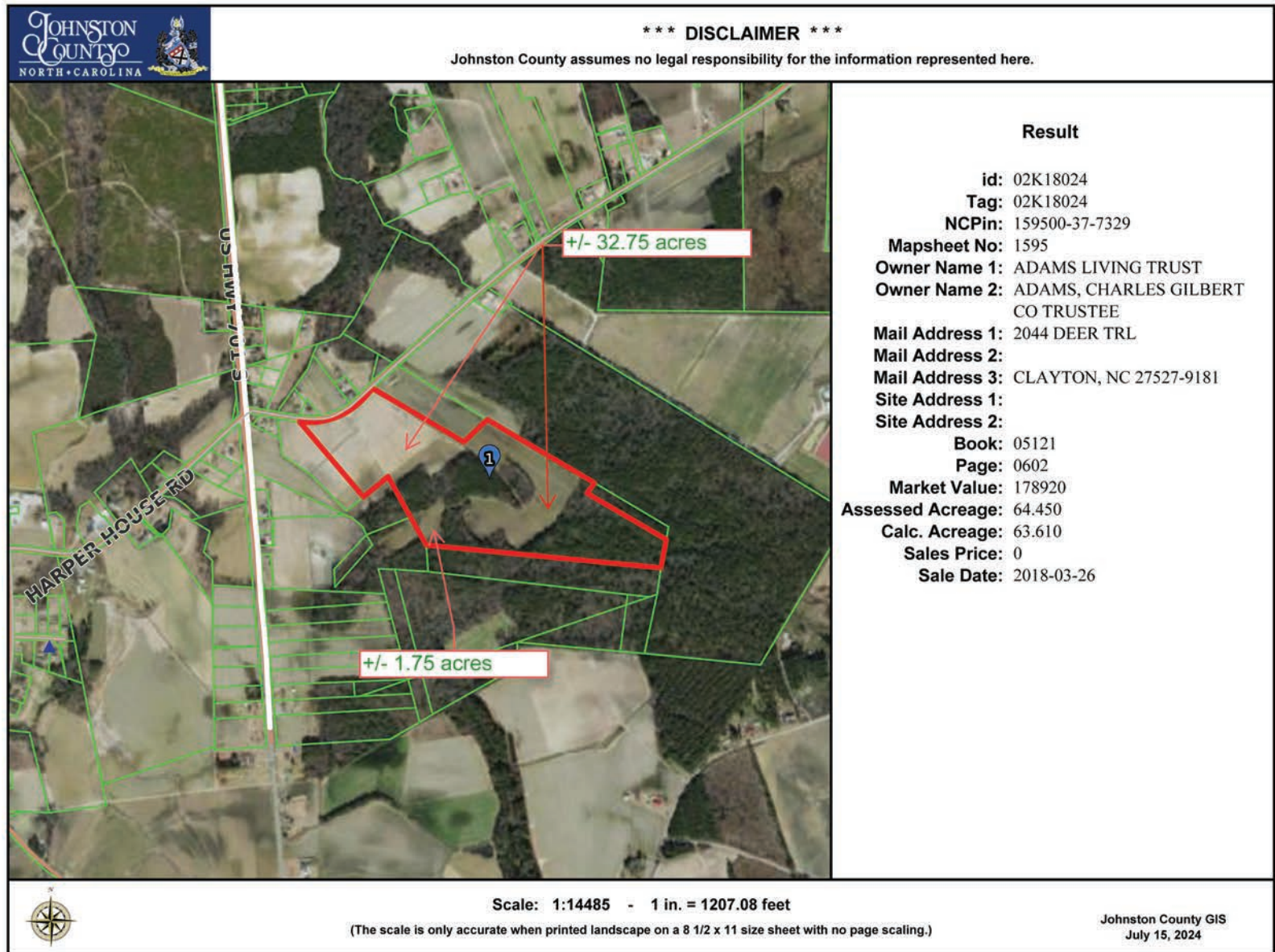
ROB GRIFFIN | 919.281.2318 | rgriffin@triprop.com

ED BROWN, SIOR, CCIM | 919.714.7116 | ebrown@triprop.com

All information provided herein is from sources deemed reliable. However, all information is subject to verification. NAI Tri Properties does not independently verify nor warrant the accuracy of the information.



CLEARED/TILLABLE ACREAGE



CONTACT

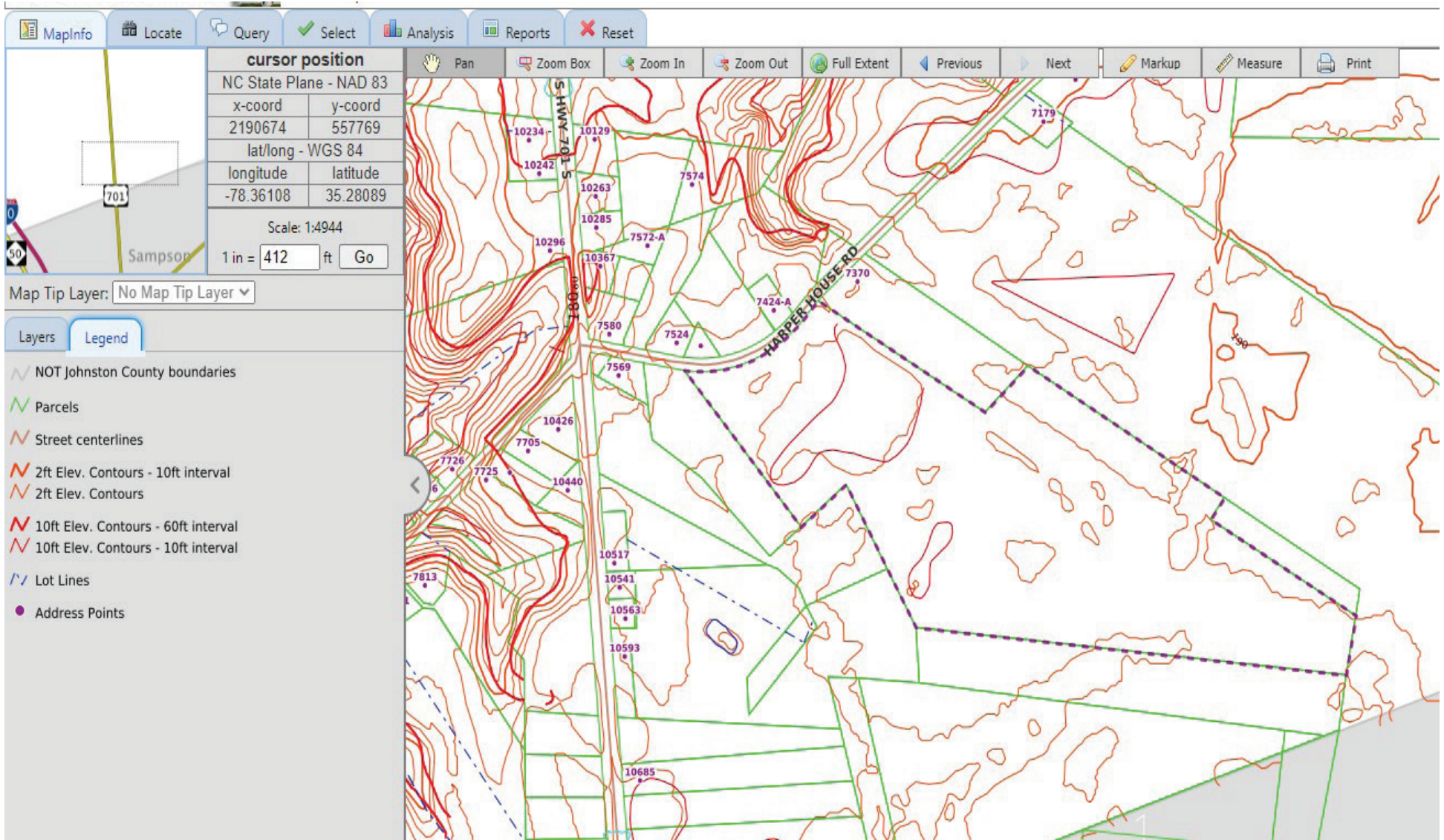
ROB GRIFFIN | 919.281.2318 | rgriffin@triprop.com

ED BROWN, SIOR, CCIM | 919.714.7116 | ebrown@triprop.com

All information provided herein is from sources deemed reliable. However, all information is subject to verification. NAI Tri Properties does not independently verify nor warrant the accuracy of the information.

NAI TRI PROPERTIES

TOPO MAP



CONTACT

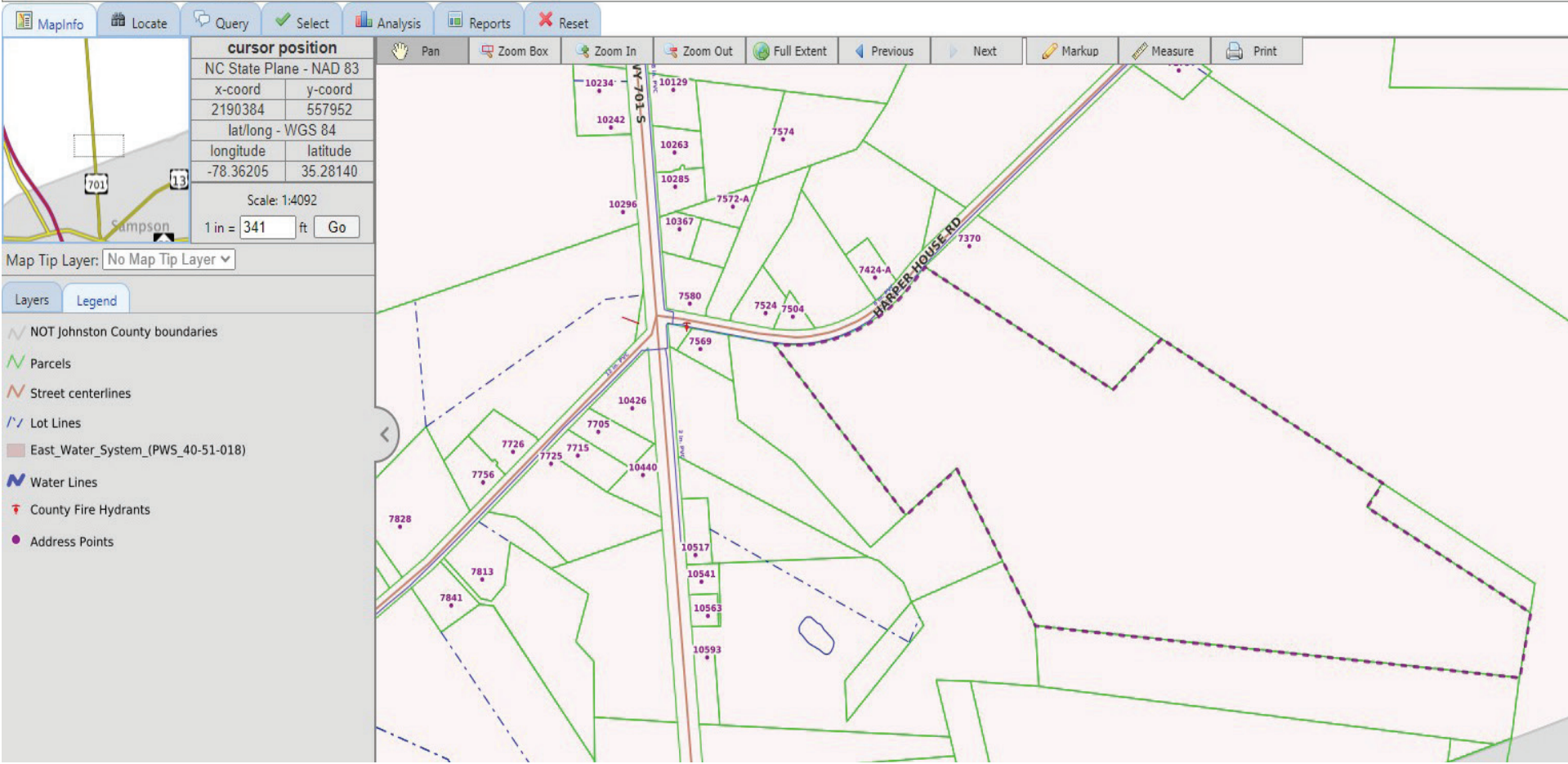
ROB GRIFFIN | 919.281.2318 | rgriffin@triprop.com

ED BROWN, SIOR, CCIM | 919.714.7116 | ebrown@triprop.com

All information provided herein is from sources deemed reliable. However, all information is subject to verification. NAI Tri Properties does not independently verify nor warrant the accuracy of the information.

NAI TRI PROPERTIES

WATER AND HYDRANTS MAP



CONTACT

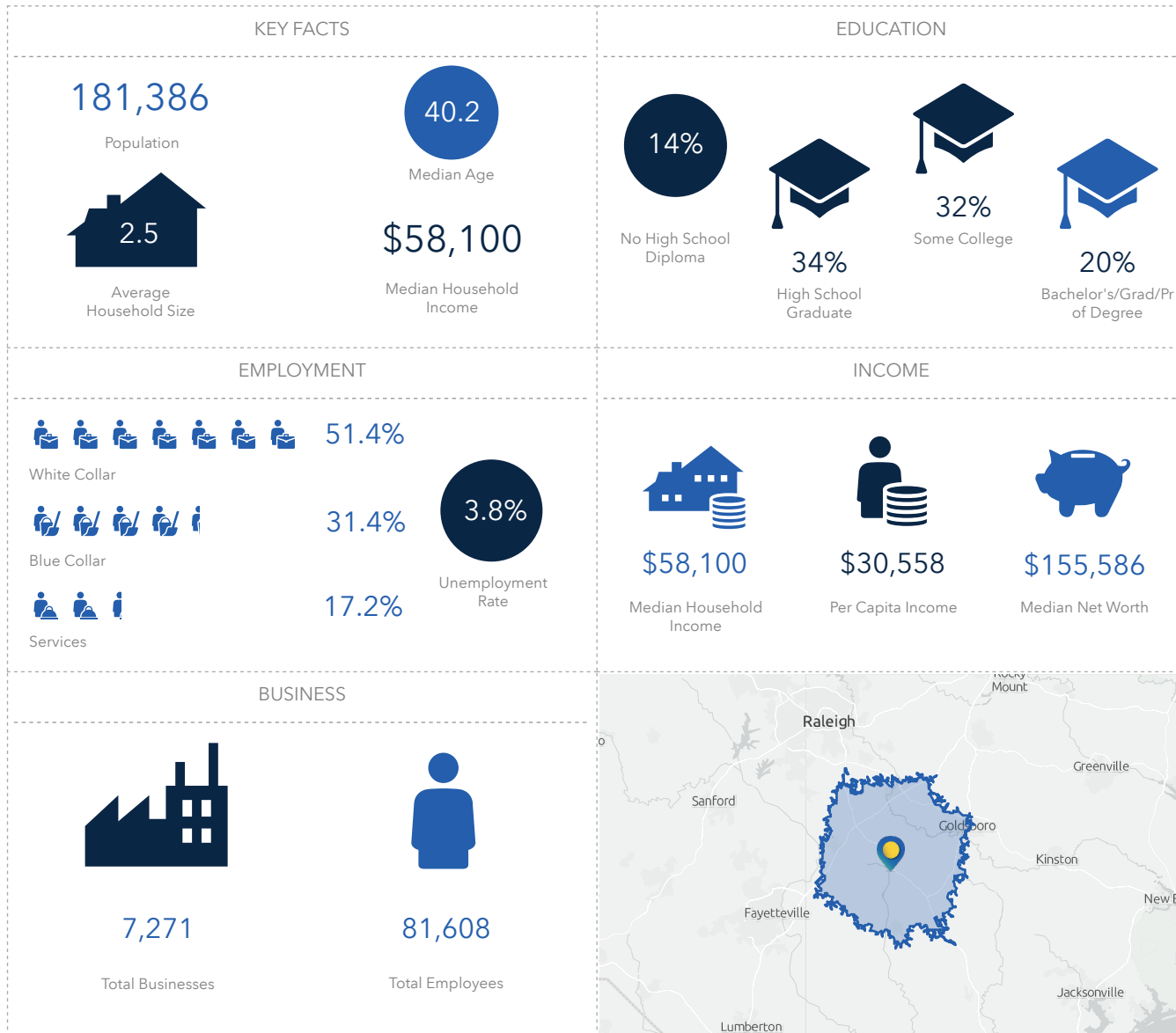
ROB GRIFFIN | 919.281.2318 | rgriffin@triprop.com
 ED BROWN, SIOR, CCIM | 919.714.7116 | ebrown@triprop.com

All information provided herein is from sources deemed reliable. However, all information is subject to verification. NAI Tri Properties does not independently verify nor warrant the accuracy of the information.



DEMOGRAPHICS

KEY COMMUTING RADIUS



CONTACT

ROB GRIFFIN | 919.281.2318 | rgriffin@triprop.com

ED BROWN, SIOR, CCIM | 919.714.7116 | ebrown@triprop.com

All information provided herein is from sources deemed reliable. However, all information is subject to verification. NAI Tri Properties does not independently verify nor warrant the accuracy of the information.

AMENITIES

The land at House Harper Rd is surrounded by a wealth of amenities to live, work, and play. The below list amenities is within 20 minute drive of the property.

FOOD

Angelo's Pizza Restaurant
Barefoot's County Store & Grill
Barley and Burger Smashed
Buffalo Wild Wings
Chick-fil-A
CiCis Pizza
Daddy D's BBQ
Denny's
El Barzon
Fiesta Mexicana
Firehouse Subs
Fry Daddys
Gotham's Deli
McDonald's
Nai Thai Xpress
No 1 Chinese Restaurant
Old North State Food Hall
Papa's Subs & Pizza
Parkside Café
Pizza Inn
Sami's Pizza and Pasta
SoDoSoPa
Tandoori Trail
Taqueria Sarita
The Chicken Barn

HOTELS

Americas Best Value Inn
Baymont by Wyndham
Best Western Smithfield Inn
Comfort Inn
Country Inn & Suites
Days Inn by Wyndam
Econo Lodge
Fairfield Inn & Suites
Four Oaks Lodging
Hampton Inn
Holiday Inn Express
La Quinta Inn & Suites
Masters Inn
Quality Inn
Raleigh Oaks RV Resort & Cottages
Sleep Inn & Suites
Super 8
Travelers Inn
Tru by Hilton
Tucker Lake Campground

PARKS & REC

Bentonville Battlefield State Historic Site
Howell Woods Environmental Learning Center
Johnston-Strickland Kiddie Park

SHOPPING

Ashley Store & Outlet
Brightleaf Flea Market
Carolina Premium Outlet
Foodlion
Lowe's Home Improvement
Walmart Supercenter

HEALTHCARE

Realo Discount Drugs
UNC Health Johnston
Walgreens

BANKS

First Citizens Bank
First Federal Bank
KS Bank
Southern Bank
State Employees Credit Union
Truist
United Community Bank

CONTACT

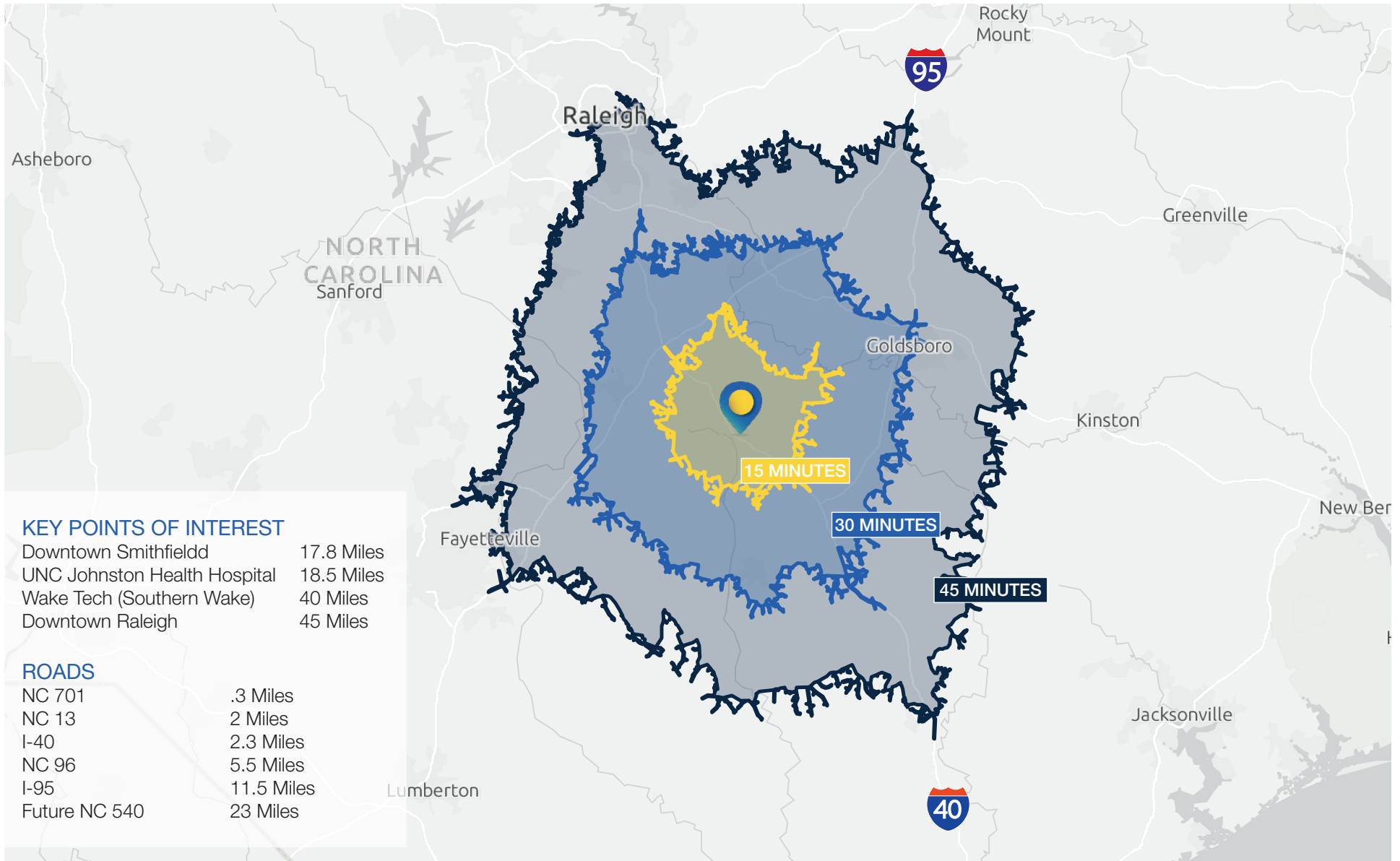
ROB GRIFFIN | 919.281.2318 | rgriffin@triprop.com

ED BROWN, SIOR, CCIM | 919.714.7116 | ebrown@triprop.com

All information provided herein is from sources deemed reliable. However, all information is subject to verification. NAI Tri Properties does not independently verify nor warrant the accuracy of the information.



LOCATION



CONTACT

ROB GRIFFIN | 919.281.2318 | rgriffin@triprop.com

ED BROWN, SIOR, CCIM | 919.714.7116 | ebrown@triprop.com

All information provided herein is from sources deemed reliable. However, all information is subject to verification. NAI Tri Properties does not independently verify nor warrant the accuracy of the information.



JOHNSTON COUNTY

NORTH CAROLINA

Located next to Raleigh, North Carolina and the Research Triangle Park (RTP), Johnston County is the fastest growing county in North Carolina. Ideal access to interstates, rail, seaports in addition to affordable housing options, great schools, diverse arts, and recreation options help explain why this county has seen such exponential growth.

I-40 and I-95 have spurred growth in Johnston County for decades. Several new interstate improvements are planned including:

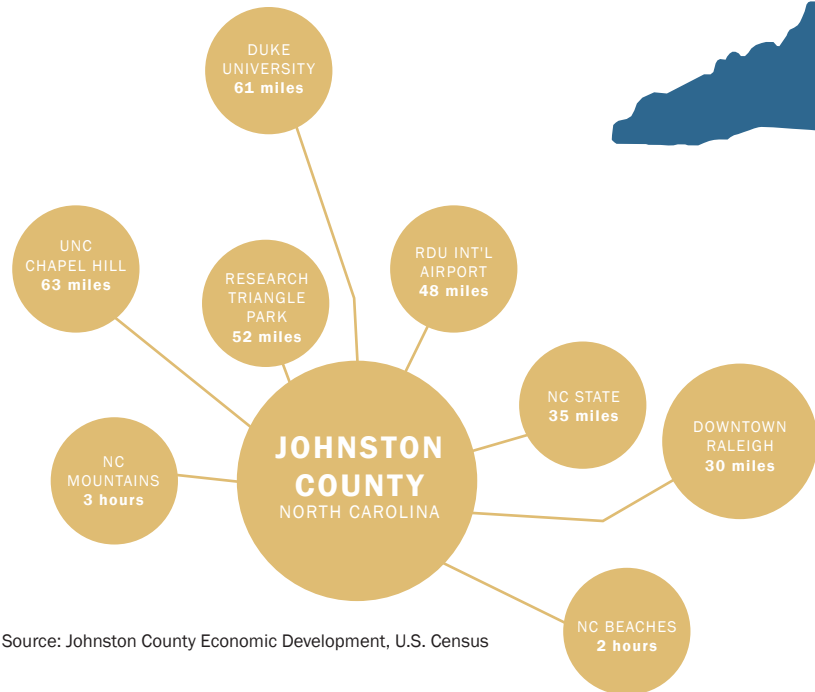
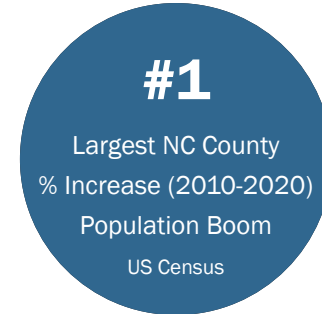
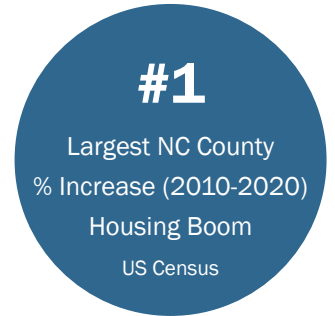
- I-42, which follows U.S. Hwy 70 from Future I-540 in Wake County, past I-95, to Morehead City
- I-685, which will follow route U.S. Hwy 421 connecting I-85 to I-95
- I-95 widening project from 4 to 8 lanes from Fayetteville through Benson (under construction)

Approximately half way between New York and Florida Johnston County is within a two day truck drive of more than 200 million US and Canadian consumers.

Johnston County is pro business and targeted industries include advanced manufacturing, life science, and warehouse and distribution.

DEMOGRAPHICS

- Population growth: **27.9% growth from 2010-2020**
- Educational attainment: **88.2% high school graduate or higher**
- Median household income: **\$61,806**
- Housing unit growth: **24.6% housing boom growth**
- Median Age: **38.4 years old**



MAJOR EMPLOYERS

- Grifols Therapeutics
- Johnston Health/UNC Health Care
- Nova Nordisk
- AAF - Flanders
- Caterpillar

Source: Johnston County Economic Development, U.S. Census

CONTACT

ROB GRIFFIN | 919.281.2318 | rgriffin@triprop.com

ED BROWN, SIOR, CCIM | 919.714.7116 | ebrown@triprop.com

All information provided herein is from sources deemed reliable. However, all information is subject to verification. NAI Tri Properties does not independently verify nor warrant the accuracy of the information.

