

FOR SUBLEASE

LA RONDE CENTRE EAST

*±2,428 SF Former Physical Therapy
Space with Easily Modifiable Floorplan*

14821 N DEL WEBB BLVD, SUN CITY, ARIZONA



KIDDER.COM

km Kidder
Mathews

1 MILE FROM BANNER BOSWELL MEDICAL CENTER WITHOUT USE RESTRICTIONS



HIGHLIGHTS

±2,428 SF	former physical therapy space available
COVERED	walkways
ON-SITE	pharmacy
DIRECT DEAL	option available
DRIVE-UP	patient access
AMPLE	parking for patients and staff with covered reserved physician parking available
MONUMENT	signage and building exterior signage available



3 MI

DRIVE TO LOOP 101 ACCESS

10 MI

DRIVE TO BANNER DEL WEBB MEDICAL



**CONVENIENT
LOCATION
NEAR LOOP 101
ACCESS**



**FLOOR PLATE
IS EASILY
MODIFIABLE**



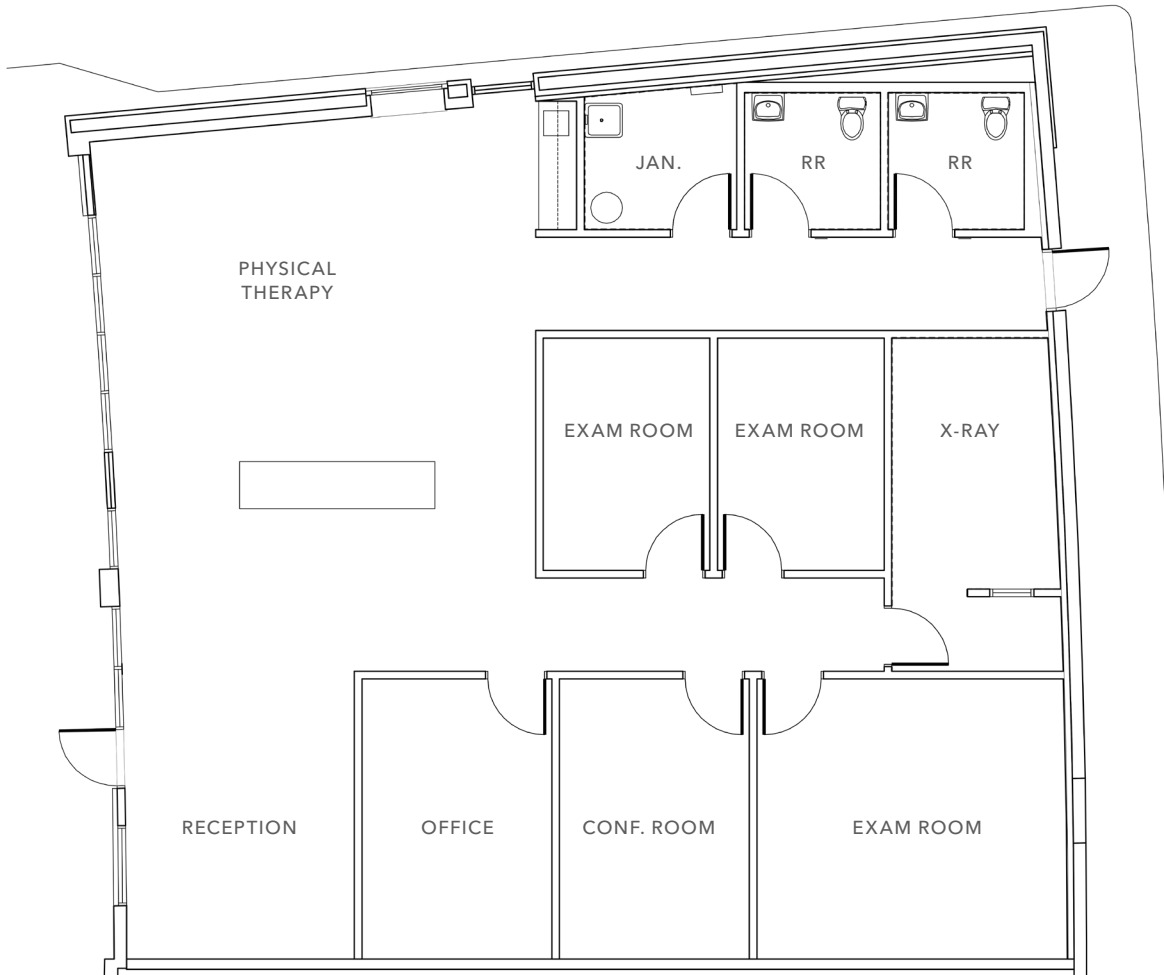
**1 MILE FROM
BANNER BOSWELL
HOSPITAL**



**SIGNAGE WITH
FRONTAGE ON N
DEL WEBB BLVD**



FLOOR PLAN



±2,428 SF

AVAILABLE



LA RONDE CENTRE EAST

For more information on this property, please contact

RACHAEL THOMPSON
602.513.5122
rachael.thompson@kidder.com

KIDDER.COM

This information supplied herein is from sources we deem reliable. It is provided without any representation, warranty, or guarantee, expressed or implied as to its accuracy. Prospective Buyer or Tenant should conduct an independent investigation and verification of all matters deemed to be material, including, but not limited to, statements of income and expenses. Consult your attorney, accountant, or other professional advisor. All Kidder Mathews designs are the sole property of Kidder Mathews. Branded materials and layouts are not authorized for use by any other firm or person.

