



366 CLEMENTINA

San Francisco, CA 94103

Plug & Play High End Creative
Office

AVAILABLE FOR LEASE

±2,260 RSF



VIRTUAL
TOUR
LINK

EXCLUSIVELY REPRESENTED BY:

CASALDRA ANDREASSEN
casaldra@coltoncommercialsf.com
(631) 478-8343
License #: O2028086

BRYAN B. COLTON
bryancolton@coltoncommercialsf.com
(415) 595-6959
License #: O2111407

DANIEL H. STARR
(415) 317-3491
dstarr@coltoncommercialsf.com
License #: O2017899



366 CLEMENTINA

San Francisco, CA 94103

HIGHLIGHTS

±2,260 RSF single tenant building
opportunity(ground floor + mezzanine)

One (1) mezzanine conference room

Three (3)small office/phone rooms

Open space for ±16

Bar/kitchen area ideal for entertaining

±29' exposed, bow-truss ceiling with skylight

Plug & play with high-end improvements

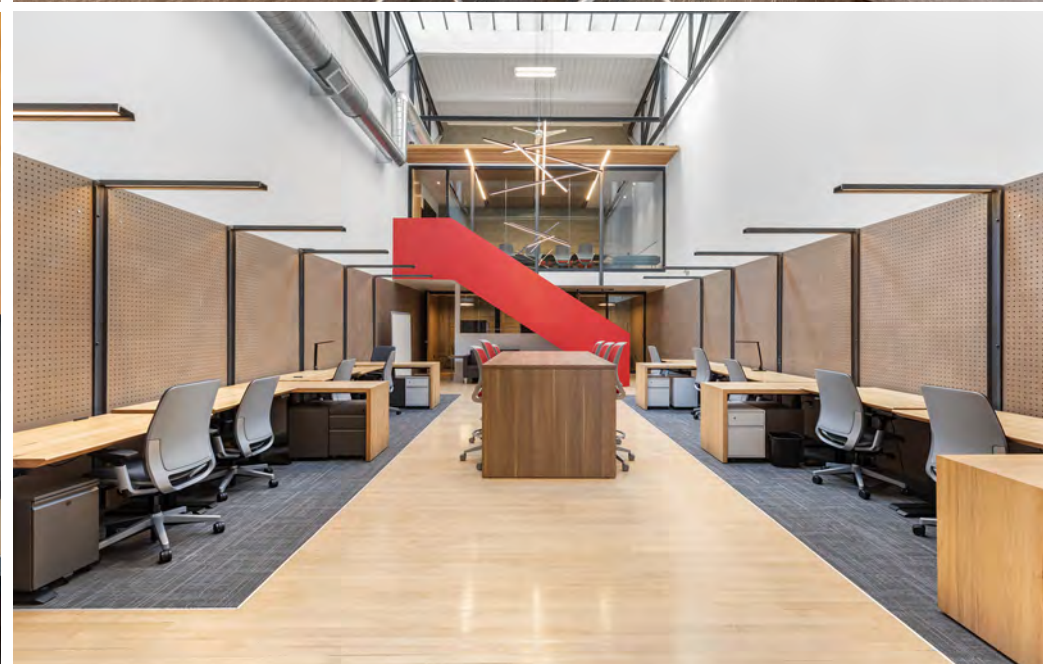
Fully Furnished

Mix of polished concrete and hardwood floors

Full HVAC



366 CLEMENTINA
San Francisco, CA 94103



366 CLEMENTINA

San Francisco, CA 94103



CASALDRA ANDREASSEN

casaldra@coltoncommercialsf.com

(631) 478-8343

License #: O2028086

BRYAN B. COLTON

bryancolton@coltoncommercialsf.com

(415) 595-6959

License #: O2111407

DANIEL H. STARR

(415) 317-3491

dstarr@coltoncommercialsf.com

License #: O2017899



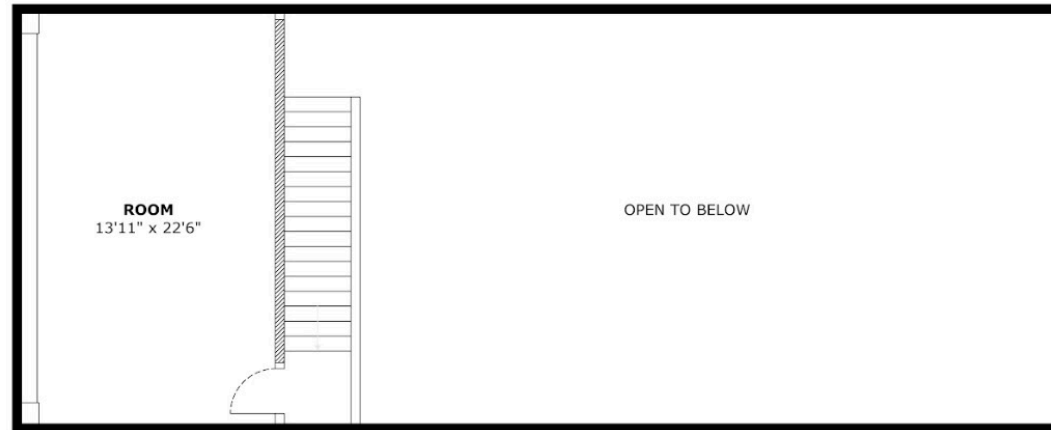
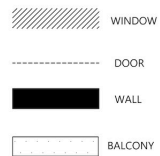
366 CLEMENTINA

San Francisco, CA 94103

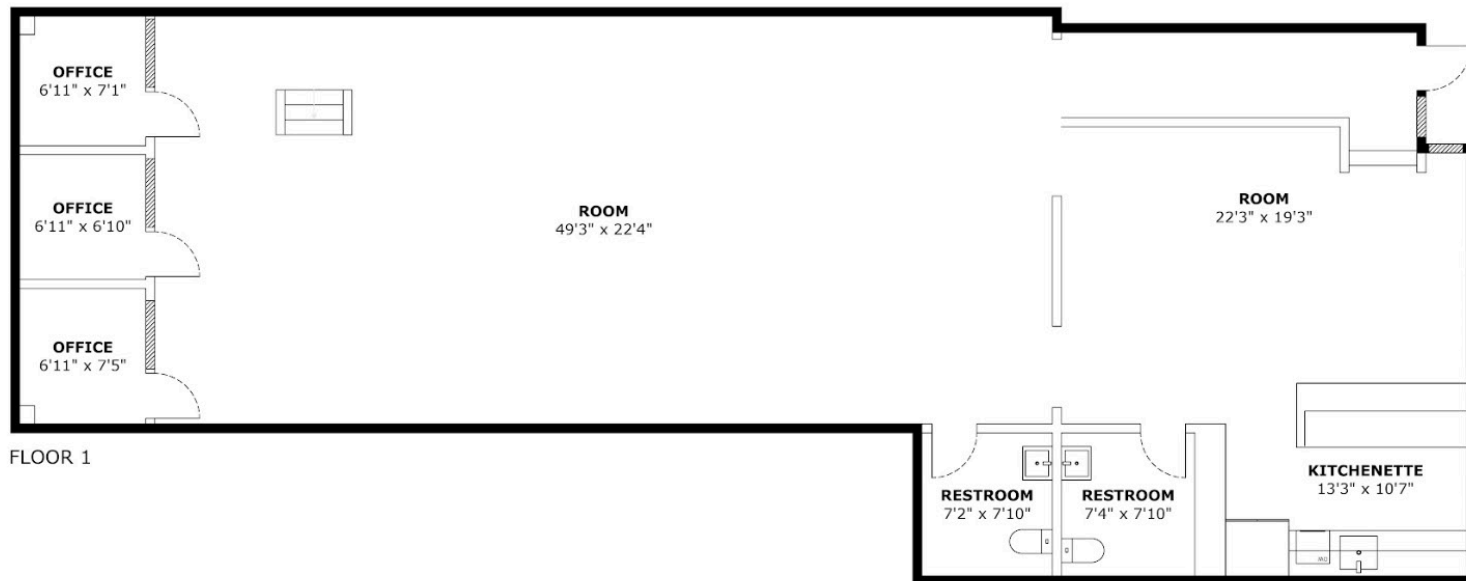


GROUND FLOOR + MEZZANINE FLOOR PLAN

±2,260 RSF



FLOOR 2



FLOOR 1

366 CLEMENTINA

San Francisco, CA 94103



NEIGHBORHOOD MAP

RECREATION & PARKS

- [1](#) Moscone Center
- [2](#) Yerba Buena Gardens
- [3](#) Yerba Buena Center
- [4](#) Salesforce Park
- [5](#) South Park

RESTAURANTS

- [1](#) Mr. East Kitchen
- [2](#) Buena Vida
- [3](#) Delah Coffee
- [4](#) Sightglass Coffee
- [5](#) Deli Board
- [6](#) Chico's Pizza
- [7](#) Tempest Bar & Box Kitchen
- [8](#) Tin Vietnamese
- [9](#) The Melt
- [10](#) Mo'z Cafe
- [11](#) S&R Lounge
- [12](#) Executive Order Bar & Lounge
- [13](#) Gyu-Kaku Japanese BBQ
- [14](#) Oasis Grill
- [15](#) Super Duper Burgers
- [16](#) TRACE
- [17](#) Fogo de Chão Brazilian Steakhouse
- [18](#) Benu

LIFESTYLE

- [1](#) San Francisco Museum of Modern Art
- [2](#) Museum of the African Diaspora
- [3](#) Martin Luther King Memorial
- [4](#) Yerba Buena Center for the Arts
- [5](#) Children's Creativity Museum
- [6](#) San Francisco Centre
- [7](#) Metreon

HOTELS

- [1](#) Inter Continental San Francisco
- [2](#) Hampton Inn San Francisco
- [3](#) The Pickwick Hotel
- [4](#) Parc 55
- [5](#) Hotel Nikko San Francisco
- [6](#) Hilton San Francisco Union Square
- [7](#) Palace Hotel

366 CLEMENTINA

San Francisco, CA 94103

Plug & Play High End Creative
Office

PLEASE CONTACT FOR MORE
INFORMATION:

CASALDRA ANDREASSEN

casaldra@coltoncommercialsf.com

(631) 478-8343

License #: O2028086

BRYAN B. COLTON

bryancolton@coltoncommercialsf.com

(415) 595-6959

License #: O2111407

DANIEL H. STARR

(415) 317-3491

dstarr@coltoncommercialsf.com

License #: O2017899



The foregoing is based upon information provided by others which we believe is accurate, however, no guarantee, warranty or representation is made. We recommend that all interested parties independently verify its accuracy and completeness. As well, any projections, assumptions, opinions, or estimates are used for example only and do not represent the current or future performance of the identified property. Your tax, financial, legal and toxic substance advisors should conduct a careful independent investigation of the property and its suitability for your needs, including land use limitations. The property is subject to prior lease, sale, change in price, or withdrawal from the market without notice.