



# VALUE INDUSTRIAL PARTNERS, LLC

Industrial Real Estate Investment, Brokerage and Management

477 W. Wrightwood Avenue, Elmhurst, Illinois 60126 TEL: 630-333-1900 FAX: 630-333-1910



**8910 W. 192nd Street, Unit J  
Mokena, Illinois**

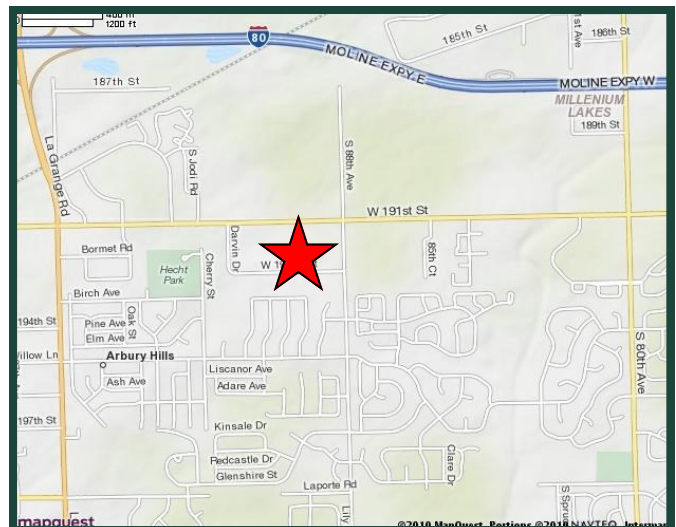
**FOR LEASE  
4,490 SF**

### Building Specifications

Available Size:	4,490 Square Feet
Building Size:	68,929 Square Feet
Office:	+/-30%
Ceiling Height:	16'
Loading:	2 Docks (Common) 1 Drive-In Door
Power:	200 Amps
Sprinklers:	Yes
Real Estate Taxes:	Included with Current Stop
CAM:	Included with Current Stop

### Comments

- Professionally owned and managed
- Minutes to I-80 at LaGrange Rd. and Harlem Ave.
- High-image building
- Minutes to I-355 and I-57 via I-80
- **\*Lease rate includes real estate taxes and CAM\***



**For Further Information, Please Contact:**

**Brian P. Gedvilas, Director of Leasing**  
bgedvilas@valueindustrialpartners.com

**Brian M. Liston, Principal**  
bliston@valueindustrialpartners.com

**TEL: 630-333-1900 FAX: 630-333-1910**

Officers of the firm have an ownership interest in this property.  
Submitted subject to error, change in status, or withdrawal without notice.

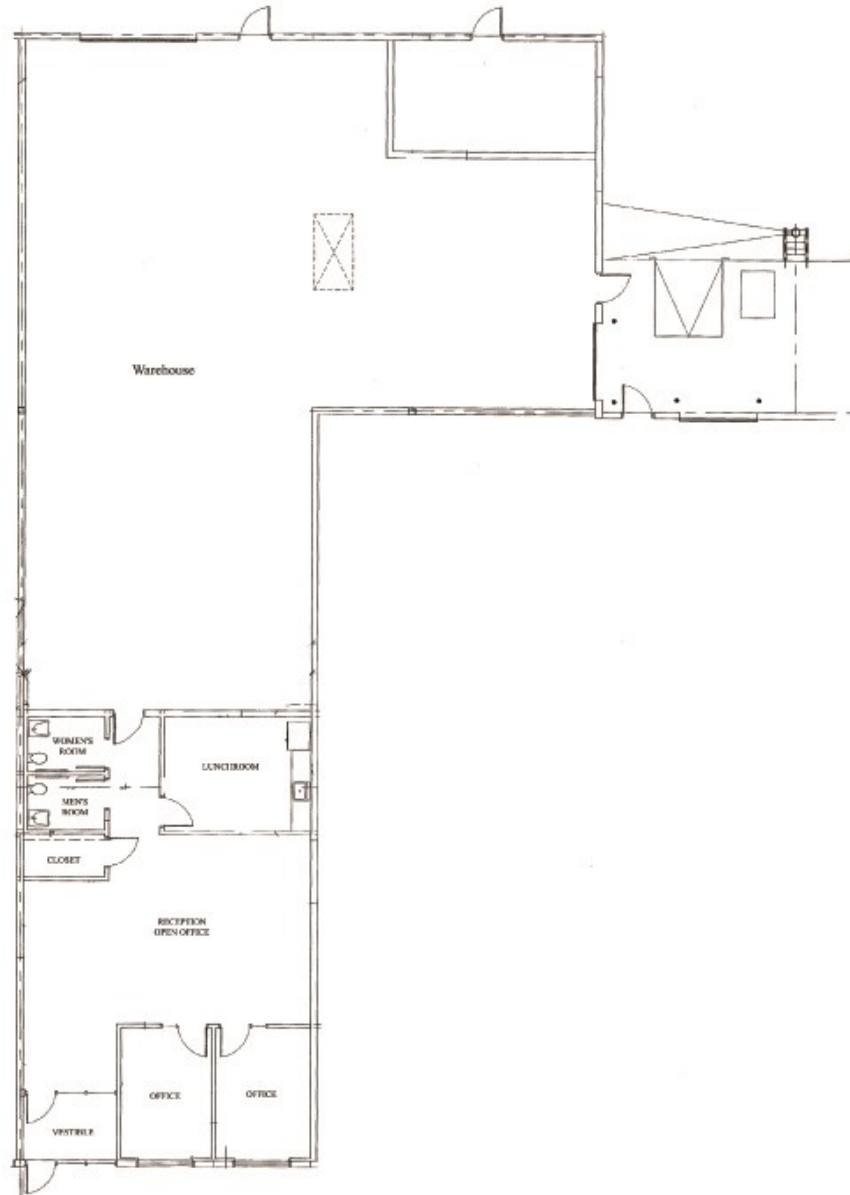


# VALUE INDUSTRIAL PARTNERS, LLC

Industrial Real Estate Investment, Brokerage and Management

477 W. Wrightwood Avenue, Elmhurst, Illinois 60126 TEL: 630-333-1900 FAX: 630-333-1910

## LAYOUT



FOR ILLUSTRATION PURPOSES ONLY

**Officers of the firm have an ownership interest in this property.  
Submitted subject to error, change in status, or withdrawal without notice.**