

LOS ALAMITOS PLAZA

10900 LOS ALAMITOS BLVD, LOS ALAMITOS, CA 90720

**RETAIL / OFFICE
SPACE**



PROPERTY HIGHLIGHTS

Available Space **±792 - ±3,432 RSF**

Asking Rate **\$2.75 / NNN / PSF (RETAIL)
\$2.00 / MG / PSF (OFFICE)**

NNN Expenses **\$0.65 / PSF**

- Mixed-Use Property Consisting of Both Retail and Office Space
- Prominent Los Alamitos Location
- Well Maintained Retail/Office Center
- Plentiful Amenities Within Walking Distance
- Excellent Exposure and Signage Available on Los Alamitos Boulevard
- Easy Access to the 605/405/22 FWYs
- Los Alamitos Plaza is Located on One of the Busiest Intersections in all of Orange County

Contact Us Today!

Josh Reilly MBA

Principal | DRE LIC 01474368

jreilly@leelalb.com

562.505.4848

Kurt Hertzog

Associate | DRE LIC 02011145

khertzog@leelalb.com

562.354.2524

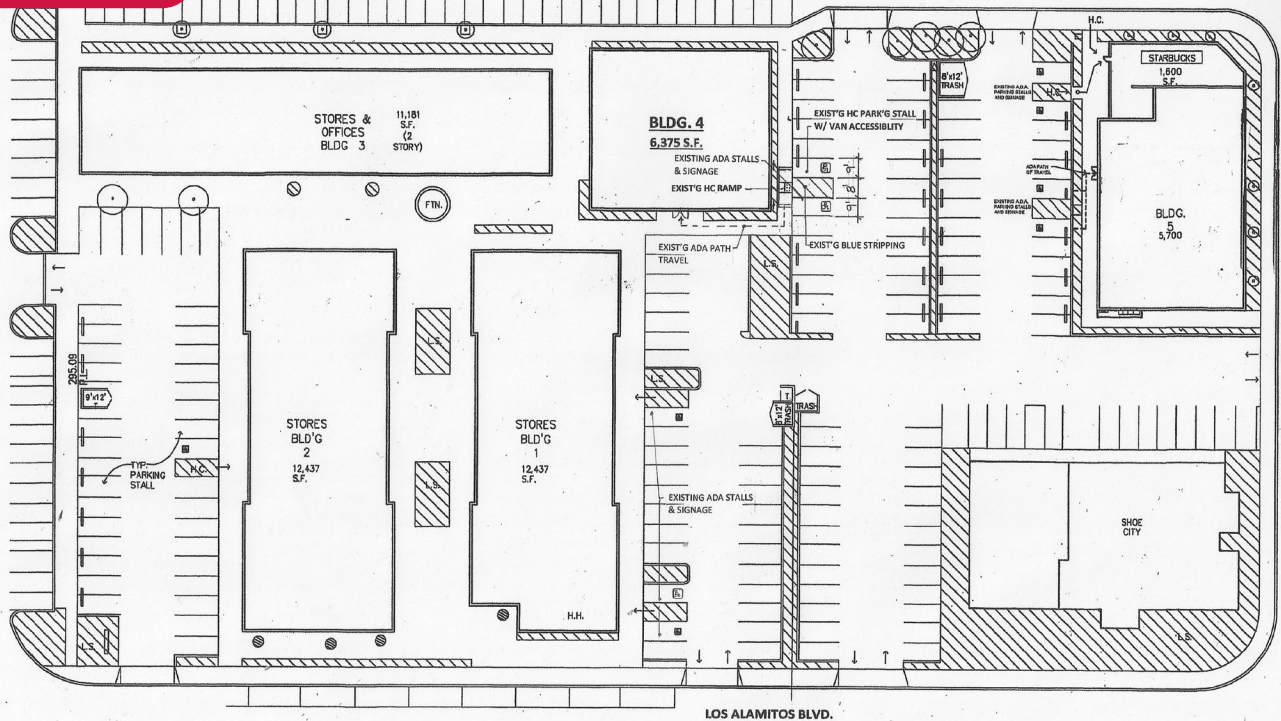
LOS ALAMITOS PLAZA

10900 LOS ALAMITOS BLVD, LOS ALAMITOS, CA 90720

RETAIL / OFFICE SPACE

UNIT	TYPE	SIZE	DESCRIPTION
208	Office	±912 RSF	<ul style="list-style-type: none"> Reception Area Two (2) Private Offices Storage Area
213	Office	±992 RSF	<ul style="list-style-type: none"> Open Area Two (2) Private Offices
120	Retail	±2,800 RSF	<ul style="list-style-type: none"> Shell Space
102	Medical	±3,432 RSF	<ul style="list-style-type: none"> Former Medical Space; Multiple Private Exam Rooms Large Reception Area Los Alamitos Blvd Frontage
132	Retail	±1,200 RSF	<ul style="list-style-type: none"> Large Open Area

SITE PLAN



This plan and its measurements are approximate and not up to scale. It is the responsibility of the buyer/lessor to verify the property's measurements independently.

Josh Reilly ^{MBA}
Principal | DRE LIC 01474368
jreilly@leelalb.com
949.525.2720

Kurt Hertzog
Associate | DRE LIC 02011145
khertzog@leelalb.com
562.354.2524

Lee & Associates Los Angeles - Long Beach Inc.
DRE License 01069854
5000 E Spring St, Suite 600, Long Beach, CA 90815

LOS ALAMITOS PLAZA

10900 LOS ALAMITOS BLVD, LOS ALAMITOS, CA 90720

**RETAIL / OFFICE
SPACE**



Josh Reilly ^{MBA}
Principal | DRE LIC 01474368
jreilly@leelalb.com
949.525.2720

Kurt Hertzog
Associate | DRE LIC 02011145
khertzog@leelalb.com
562.354.2524

Lee & Associates Los Angeles - Long Beach Inc.
DRE License 01069854
5000 E Spring St, Suite 600, Long Beach, CA 90815

LOS ALAMITOS PLAZA

10900 LOS ALAMITOS BLVD, LOS ALAMITOS, CA 90720

**RETAIL / OFFICE
SPACE**



Josh Reilly ^{MBA}
 Principal | DRE LIC 01474368
 jreilly@leelalb.com
 949.525.2720

Kurt Hertzog
 Associate | DRE LIC 02011145
 khertzog@leelalb.com
 562.354.2524

Lee & Associates Los Angeles - Long Beach Inc.
 DRE License 01069854
 5000 E Spring St, Suite 600, Long Beach, CA 90815