

43-08 BROADWAY

BETWEEN 43RD & 44TH STREETS | ASTORIA



43-08 BROADWAY

BETWEEN 43RD & 44TH STREETS | ASTORIA

PROPERTY HIGHLIGHTS

- Dry use only
- Full Basement
- Neighboring tenants:
McDonald's, GDK, USPS, Midtown Comics, Blink Fitness, Dollar Tree, Bank of America, Popeyes, Chase, Dermatology Specialists

SIZE: 1,600 SF Ground Floor
1,600 SF Basement

FRONTAGE: 15'

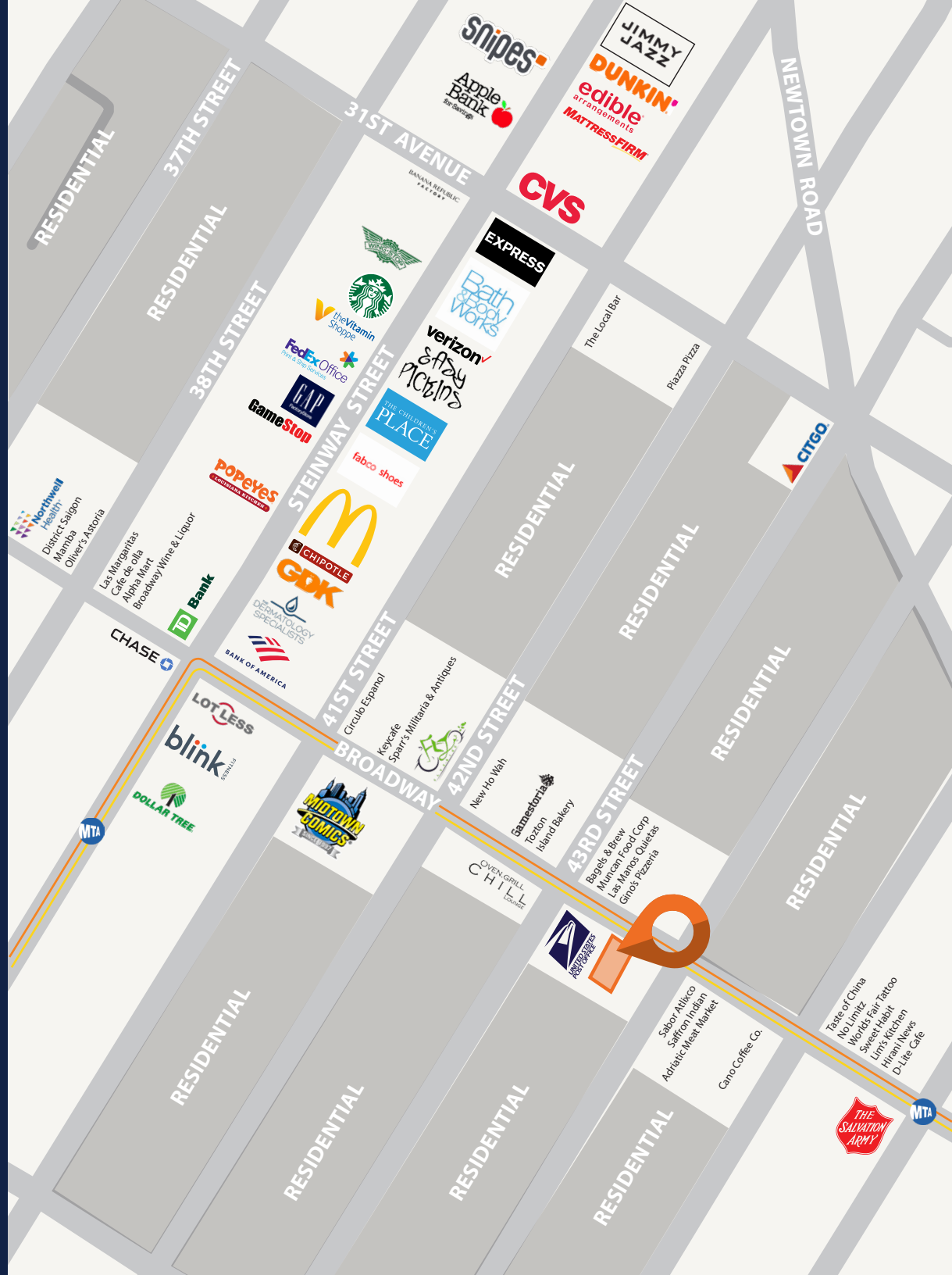
POSSESSION: Immediate

ASKING RENT: Upon Request

TRANSPORTATION: 

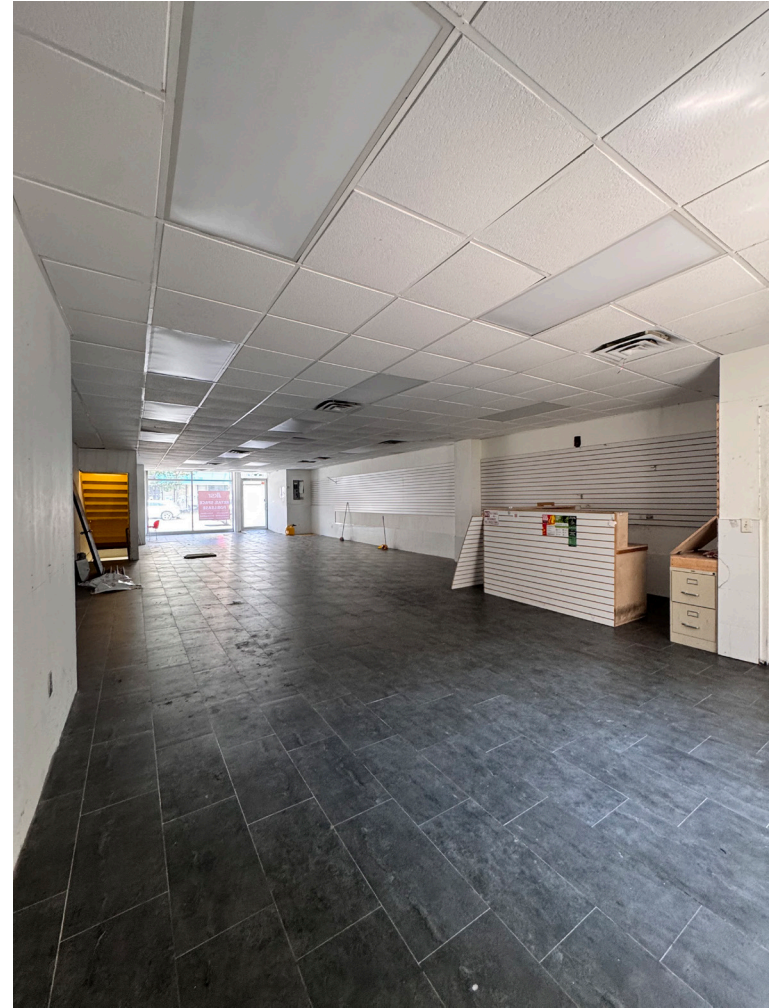


All information supplied in this marketing presentation and/or flyer is from sources deemed reliable and is furnished subject to errors, omissions, modifications, removal of listings from sale/lease and to any listing condition. Any square footage, dimensions, floor plans and/or technical data set forth are approximations and are subject to further elaboration/confirmation.



43-08 BROADWAY

BETWEEN 43RD & 44TH STREETS | ASTORIA



All information supplied in this marketing presentation and/or flyer is from sources deemed reliable and is furnished subject to errors, omissions, modifications, removal of listings from sale/lease and to any listing condition. Any square footage, dimensions, floor plans and/or technical data set forth are approximations and are subject to further elaboration/confirmation.



43-08 BROADWAY

BETWEEN 43RD & 44TH STREETS | ASTORIA

FOR MORE INFORMATION,
PLEASE CONTACT:

CHARLES MARYLES

914.536.5436 | CMaryles@ksrny.com

NATHAN ABALLI

917.915.8763 | NAballi@ksrny.com

