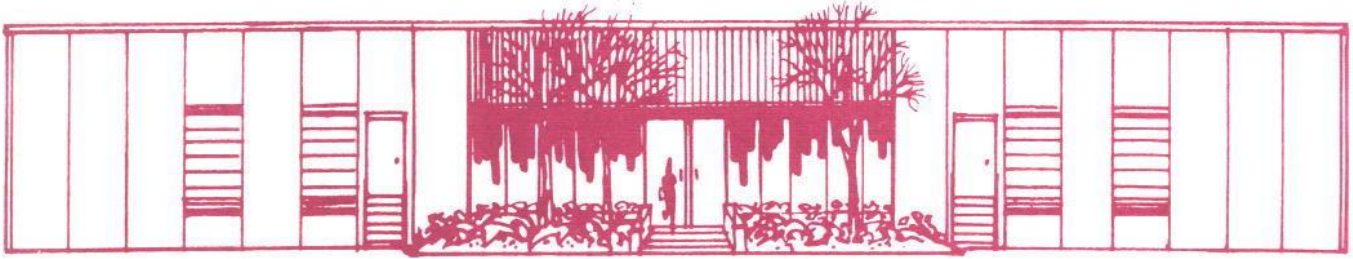


FOR LEASE

(20,820 SQ.FT.)



Office / Warehouse Building

3800 Revere Street, Denver, Colorado

- EASY ACCESS TO I-70 & I-225
- LOCATED IN NORTHEAST DENVER
- SPRINKLERED
- FOUR DOCK HIGH DOORS
- ONE DRIVE-IN RAMP
- 27' x 35' COLUMN SPACING
- INSULATED WALLS & CEILINGS
- 18' CLEAR CEILING HEIGHT
- SKYLIGHTS
- A/C OFFICES
- ATTRACTIVE LANDSCAPING
- 400 AMP/208-480v/3 PHASE POWER
- 26 PARKING SPACES



