

Single Tenant Industrial Building

445 E. Menlo Avenue, Hemet, CA 92543

FOR SALE



12,000± SF
PLUS APPROVED
MEZZANINE WITH FORKLIFT
ACCESS



\$1,850,000
(±\$154.17 PSF)

~~\$2,100,000~~
(±\$175 PSF)



FEATURES:

- Renovations include new siding, security fencing, flooring & restroom
- Secured yard
- Two 12' x 14' ground level doors
- 18' - 20' clear height
- 400 amp, 3 phase power
- Gas enabled property



This offering is a renovated single story industrial warehouse building situated on an approximate one-half acre parcel conveniently located just off State Street and highly visible along the frontage.

This renovated property benefits from being in the highly flexible M-1 (Limited Manufacturing) zone. There are an adequate number of offices in the front of the building, representing about 10% of the overall buildout.

445 E. Menlo is a well located, easy to maintain property with solid, successful local neighbors. Offered at a market low of ~~\$175~~ **±\$154.17 PSF**, this property represents a great investment for most industrial users.

Exclusively Marketed By:

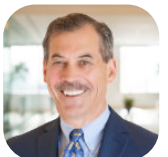
Jerry Palmer

Senior Vice President

CA License # 01442207

(951) 491-6322

jpalmer@westmarcre.com



41623 Margarita Road, Suite 100, Temecula, CA 92591 | Ph: 951.491.6300 | www.WestMarCRE.com

The above information, while not guaranteed, has been secured from sources we believe to be reliable.

Floor plan, site plan, price, tenant mix, and availability subject to change without notice.

Page 1

Rev: 11-18-2025

Single Tenant Industrial Building

445 E. Menlo Avenue, Hemet, CA 92543

FOR SALE



Single Tenant Industrial Building

445 E. Menlo Avenue, Hemet, CA 92543

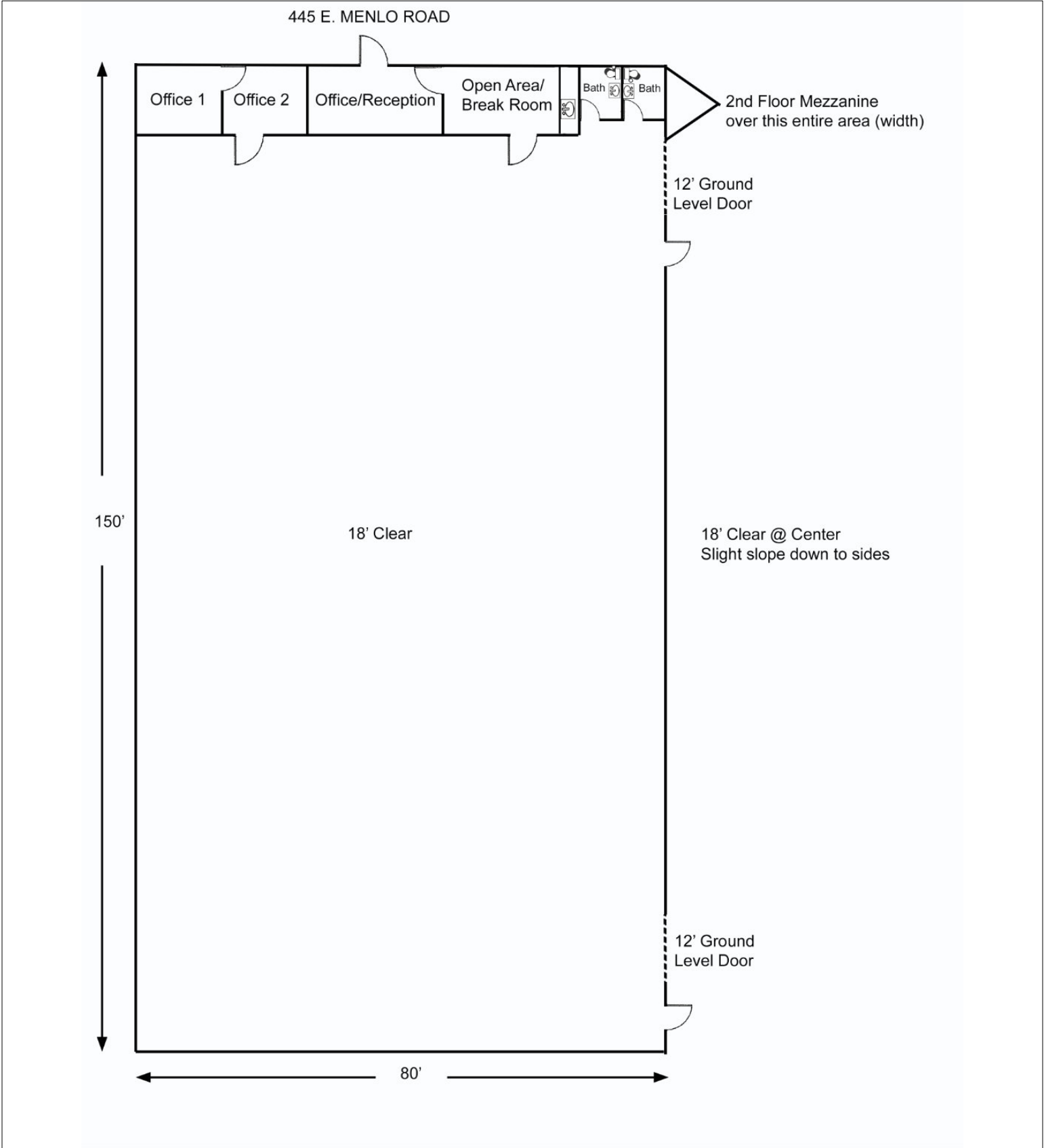
FOR SALE



Single Tenant Industrial Building

445 E. Menlo Avenue, Hemet, CA 92543

FOR SALE



Single Tenant Industrial Building

445 E. Menlo Avenue, Hemet, CA 92543

FOR SALE

