

350 ELEVENTH STREET

A Stanley Saitowitz Designed Landmark Building
Retail Lease Opportunity $\pm 6,250$ RSF
Flagship Ground Floor Space Available Now
Divisible to $\pm 3,125$ RSF

STANLEY SAITOWITZ | NATOMA ARCHITECTS INC.

 Kidder
Mathews

FEATURES

±6,250 RSF ground floor retail space

AVAILABLE now

FLAGSHIP retail space with large entryway and dramatic glass facade

FLEXIBILITY to demise & split the space in half

LANDMARK stand-alone brand new building

PRIME 11th Street SOMA retail corridor location

EXPANSIVE storefront with prominent street frontage

OUTDOOR seating and communal courtyard potential

IDEAL location centralized for all transit systems

FLOOR TO CEILING glass windows

MASSIVE 18 FOOT CEILING heights with minimal columns

HIGHLY RESPONSIVE local, experienced ownership

INQUIRE with broker for rate & terms

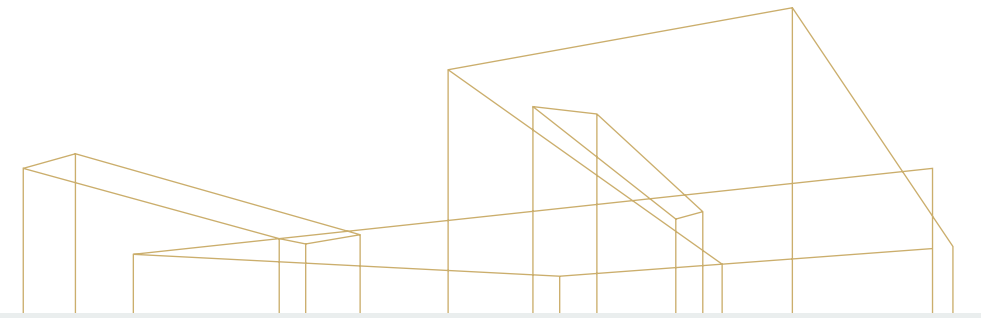
MAX SANDER
415.229.8901
max.sander@kidder.com
LIC N° 01979663

km Kidder
Mathews





350 ELEVENTH STREET ±6,250 RSF AVAILABLE NOW

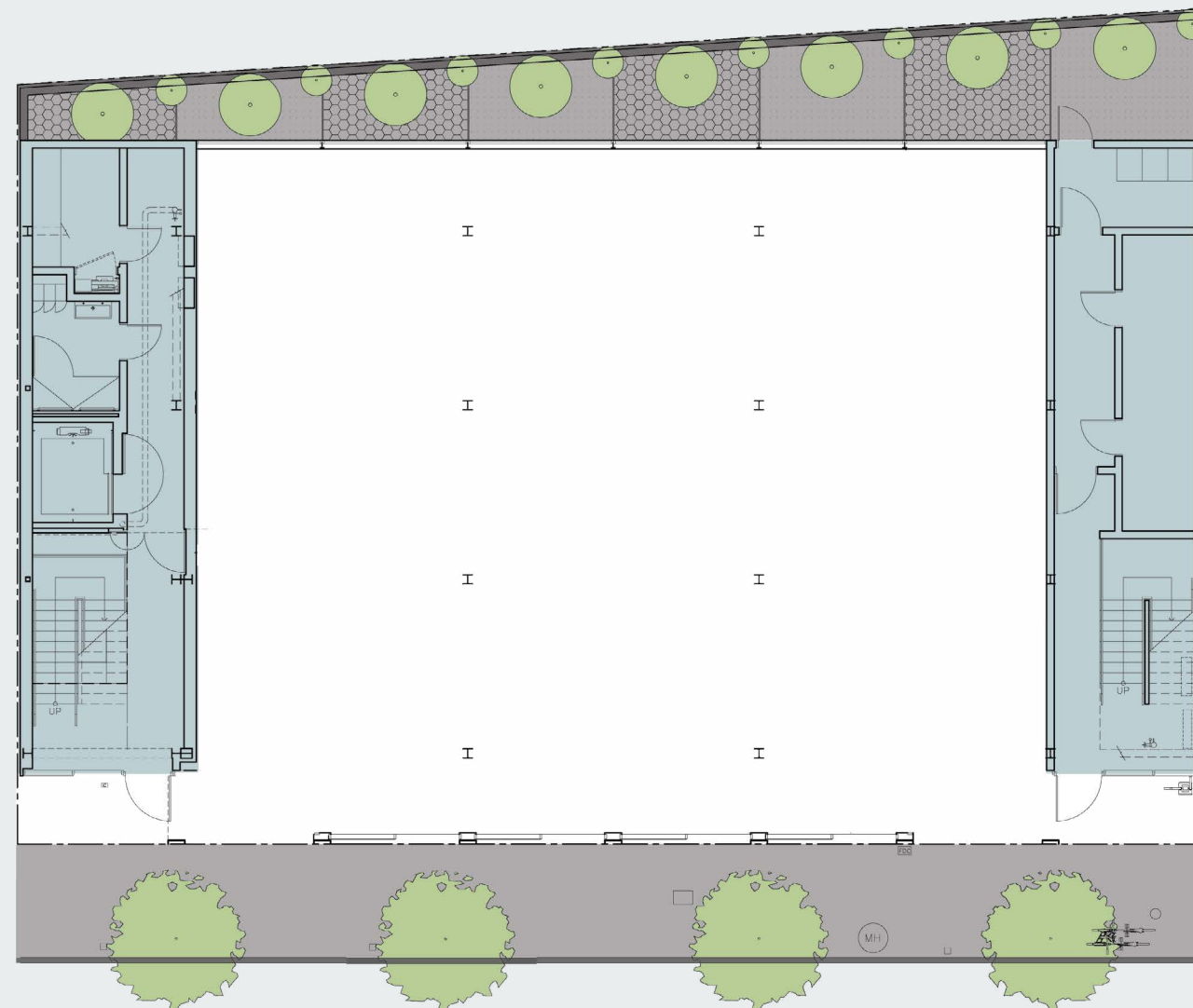


AS BUILT
WARM SHELL
GROUND FLOOR

±6,250
SQUARE FEET

TI AVAILABLE
MARKET RATE

FLOOR TO CEILING
GLASS WINDOWS



ELEVENTH ST

For leasing information contact

MAX SANDER
415.229.8901
max.sander@kidder.com
LIC N° 01979663

EVAN HOUSEL
415.229.8922
evan.housel@kidder.com
LIC N° 01882475

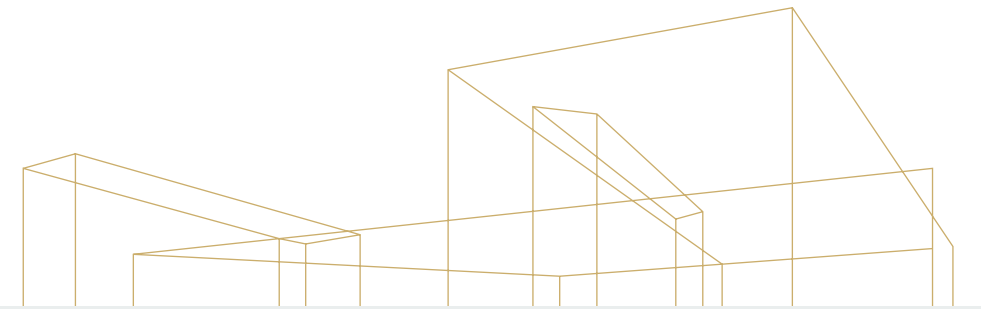
KIDDER.COM



This information supplied herein is from sources we deem reliable. It is provided without any representation, warranty, or guarantee, expressed or implied as to its accuracy. Prospective Buyer or Tenant should conduct an independent investigation and verification of all matters deemed to be material, including, but not limited to, statements of income and expenses. Consult your attorney, accountant, or other professional advisor.

350 ELEVENTH STREET

±3,125 - ±6,250 RSF AVAILABLE NOW

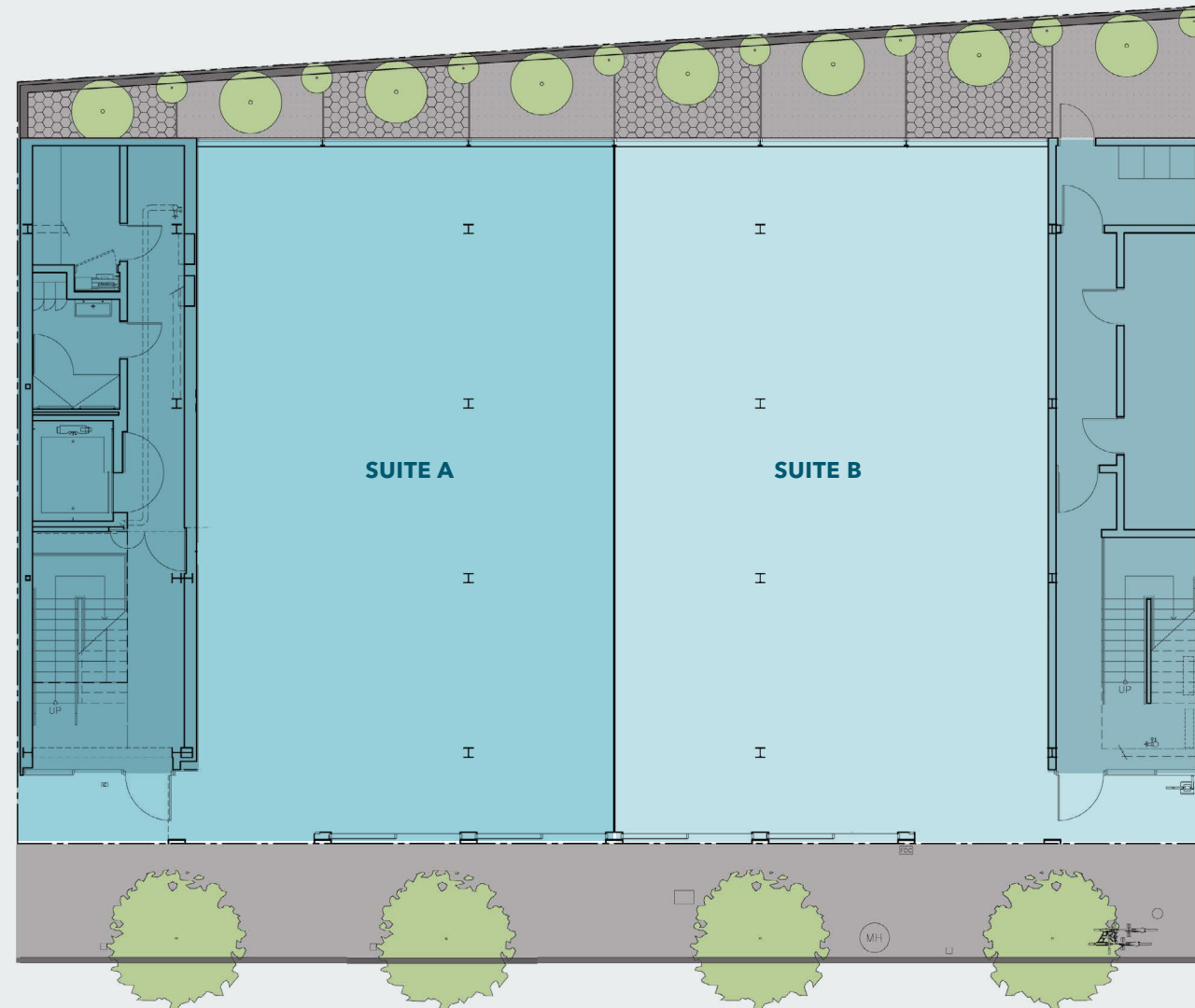


HYPOTHETICAL
DIVISIBLE BY 2
GROUND FLOOR

±3,125
SQUARE FEET PER SUITE

TI AVAILABLE
MARKET RATE

FLOOR TO CEILING
GLASS WINDOWS



For leasing information contact

MAX SANDER
415.229.8901
max.sander@kidder.com
LIC N° 01979663

EVAN HOUSEL
415.229.8922
evan.housel@kidder.com
LIC N° 01882475

KIDDER.COM



This information supplied herein is from sources we deem reliable. It is provided without any representation, warranty, or guarantee, expressed or implied as to its accuracy. Prospective Buyer or Tenant should conduct an independent investigation and verification of all matters deemed to be material, including, but not limited to, statements of income and expenses. Consult your attorney, accountant, or other professional advisor.

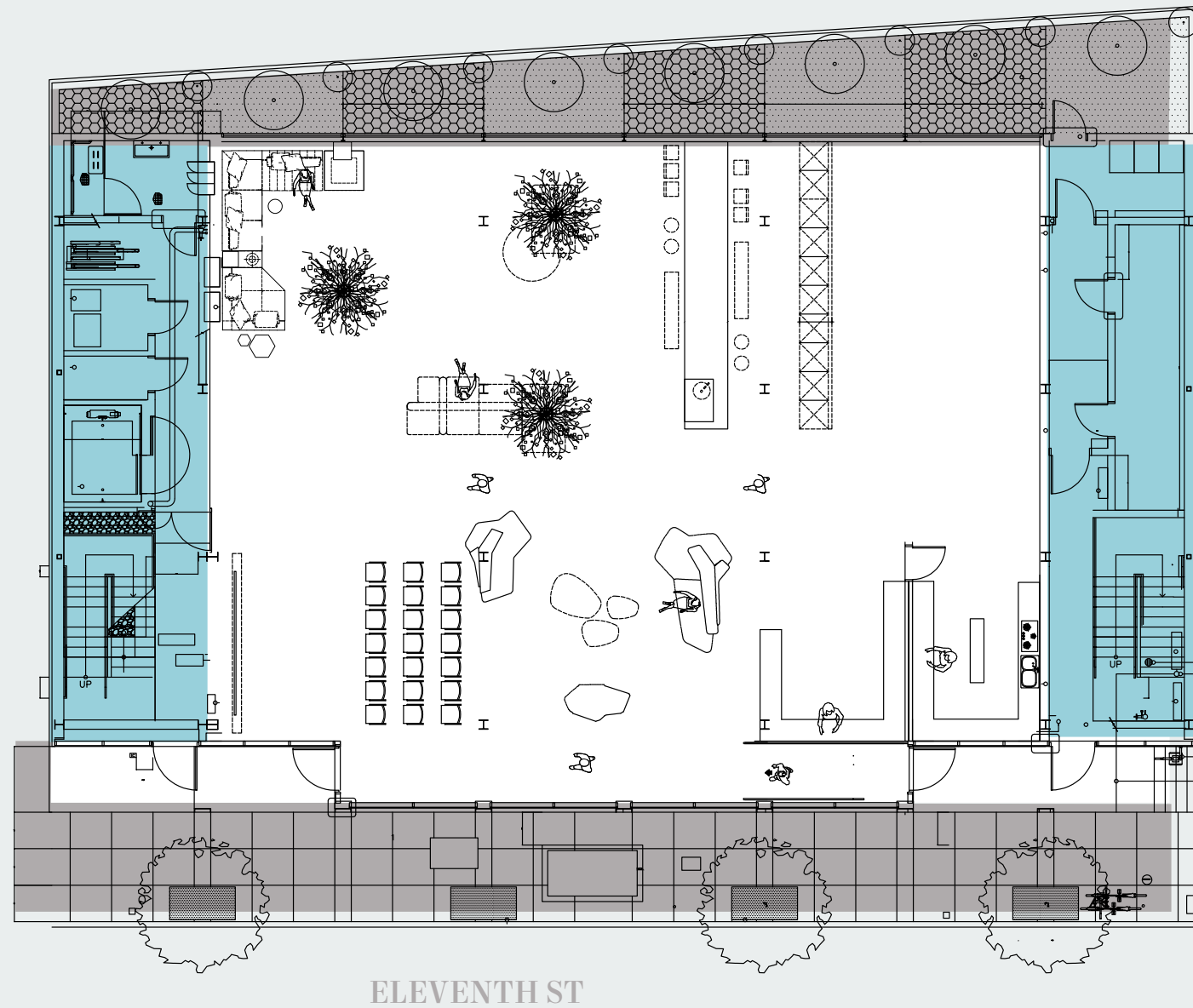
350 ELEVENTH STREET ±6,250 RSF AVAILABLE NOW

RETAIL/CAFE/EVENT SPACE
GROUND FLOOR TEST FIT

±6,250
SQUARE FEET AVAILABLE

TI AVAILABLE
MARKET RATE

FLOOR TO CEILING
GLASS WINDOWS



For leasing information contact

MAX SANDER
415.229.8901
max.sander@kidder.com
LIC N° 01979663

EVAN HOUSEL
415.229.8922
evan.housel@kidder.com
LIC N° 01882475

KIDDER.COM



This information supplied herein is from sources we deem reliable. It is provided without any representation, warranty, or guarantee, expressed or implied as to its accuracy. Prospective Buyer or Tenant should conduct an independent investigation and verification of all matters deemed to be material, including, but not limited to, statements of income and expenses. Consult your attorney, accountant, or other professional advisor.

350 ELEVENTH STREET ±6,250 RSF AVAILABLE NOW

FOOD + SHOPPING

- 1 Costco
- 2 Rainbow Grocery
- 3 Rintaro
- 4 SoMa Street Food Park
- 5 Starbucks
- 6 Peet's Coffee
- 7 Pink Onion
- 8 Basil Canteen
- 9 Trader Joe's
- 10 Bellota
- 11 Safeway
- 12 DNA Lounge
- 13 Bar Agricole
- 14 Bergerac
- 15 The Willows
- 16 Rocco's Cafe
- 17 Niku Steakhouse
- 18 Rosemary & Pine
- 19 Zuni Cafe
- 20 Zeitgeist

COMPANIES

- 1 Square
- 2 Uber
- 3 Skycatch
- 4 X Corp. HQ
- 5 Dolby Laboratories
- 6 Weebly
- 7 Code for America
- 8 Paymentwall
- 9 Patreon
- 10 Zynga
- 11 Basis
- 12 Airbnb
- 13 Webpass
- 14 Pagerduty
- 15 Alice Technologies
- 16 Watershed Technology Inc.
- 17 Dell Technologies
- 18 Adobe San Francisco



For leasing information contact

MAX SANDER
415.229.8901
max.sander@kidder.com
LIC N° 01979663

EVAN HOUSEL
415.229.8922
evan.housel@kidder.com
LIC N° 01882475

KIDDER.COM

This information supplied herein is from sources we deem reliable. It is provided without any representation, warranty, or guarantee, expressed or implied as to its accuracy. Prospective Buyer or Tenant should conduct an independent investigation and verification of all matters deemed to be material, including, but not limited to, statements of income and expenses. Consult your attorney, accountant, or other professional advisor.