

FOR LEASE

# 4266 Winters Chapel Road

ATLANTA, GA 30360

±25,480 SF | ±2.44 ACRES | RECENTLY RENOVATED | AVAILABLE 4/1/2026



FOR MORE  
INFORMATION:

**MENDY RUDER**

*Principal*

[mruder@lee-associates.com](mailto:mruder@lee-associates.com)

O: 404.442.2848

**HARRISON TUCK**

*Associate*

[htuck@lee-associates.com](mailto:htuck@lee-associates.com)

O: 404.442.2872

**LEE &  
ASSOCIATES**  
COMMERCIAL REAL ESTATE SERVICES



# Property Highlights

## BUILDING SIZE

±25,480 SF total building  
 ±19,480 SF warehouse  
 ±6,000 SF two-story office

## OUTSIDE STORAGE

±2.44 total acres

## LOADING

30 drive in doors (12' x 12')  
 4 dock high doors

## CLEAR HEIGHT

14' - 16' clear height

## ZONING

M1 (DeKalb County)



**FOR MORE  
INFORMATION:**

**MENDY RUDER**  
*Principal*  
 mruder@lee-associates.com  
 O: 404.442.2848

**HARRISON TUCK**  
*Associate*  
 htuck@lee-associates.com  
 O: 404.442.2872

All information regarding property for sale, rental or financing is from sources deemed reliable, but no warranty or representation is made to the accuracy thereof and same is submitted to errors, omissions, change of price, rental or other conditions prior to sale, lease or financing or withdrawal without notice. No liability of any kind is to be imposed on the broker herein.



# Location Highlights

## KEY DISTANCES

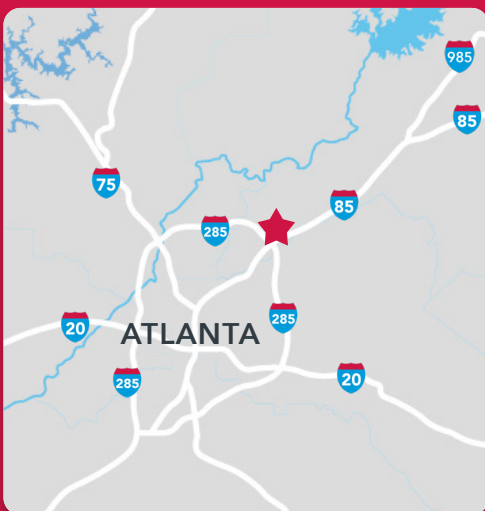
📍 4266 Winters Chapel Road

🛣️ 23 1.3 miles | 5 minutes

🛣️ 141 1.6 miles | 5 minutes

🛣️ 285 1.6 miles | 6 minutes

🛣️ 85 2.8 miles | 8 minutes



FOR MORE  
INFORMATION:

**MENDY RUDER**

Principal

[mruder@lee-associates.com](mailto:mruder@lee-associates.com)

O: 404.442.2848

**HARRISON TUCK**

Associate

[htuck@lee-associates.com](mailto:htuck@lee-associates.com)

O: 404.442.2872

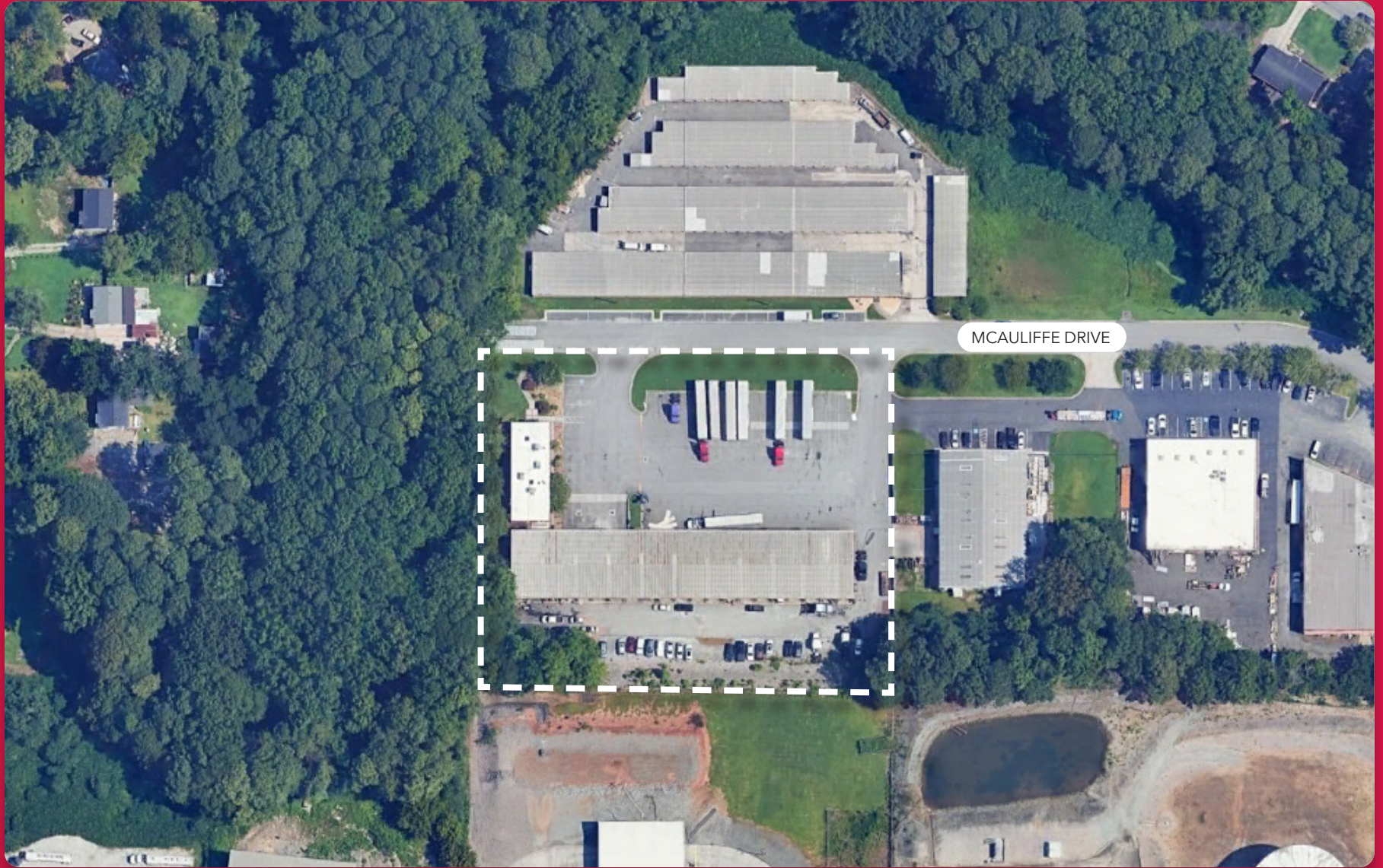


# Aerial View

● Aerial View

● Location Highlights

● Property Summary



**FOR MORE  
INFORMATION:**

**MENDY RUDER**  
*Principal*  
mruder@lee-associates.com  
O: 404.442.2848

**HARRISON TUCK**  
*Associate*  
htuck@lee-associates.com  
O: 404.442.2872

**LEE &  
ASSOCIATES**  
COMMERCIAL REAL ESTATE SERVICES

