



JLR Realty Inc

# 500 Bergen Ave

## Bronx, NY - AKA 410 E 148th St

### PRIME RETAIL FOR LEASE



RENT:  
Upon Request



POSSESSION:  
Immediate



ELECTRIC::  
Direct



TERM:  
Negotiable



#### *Contacts:*

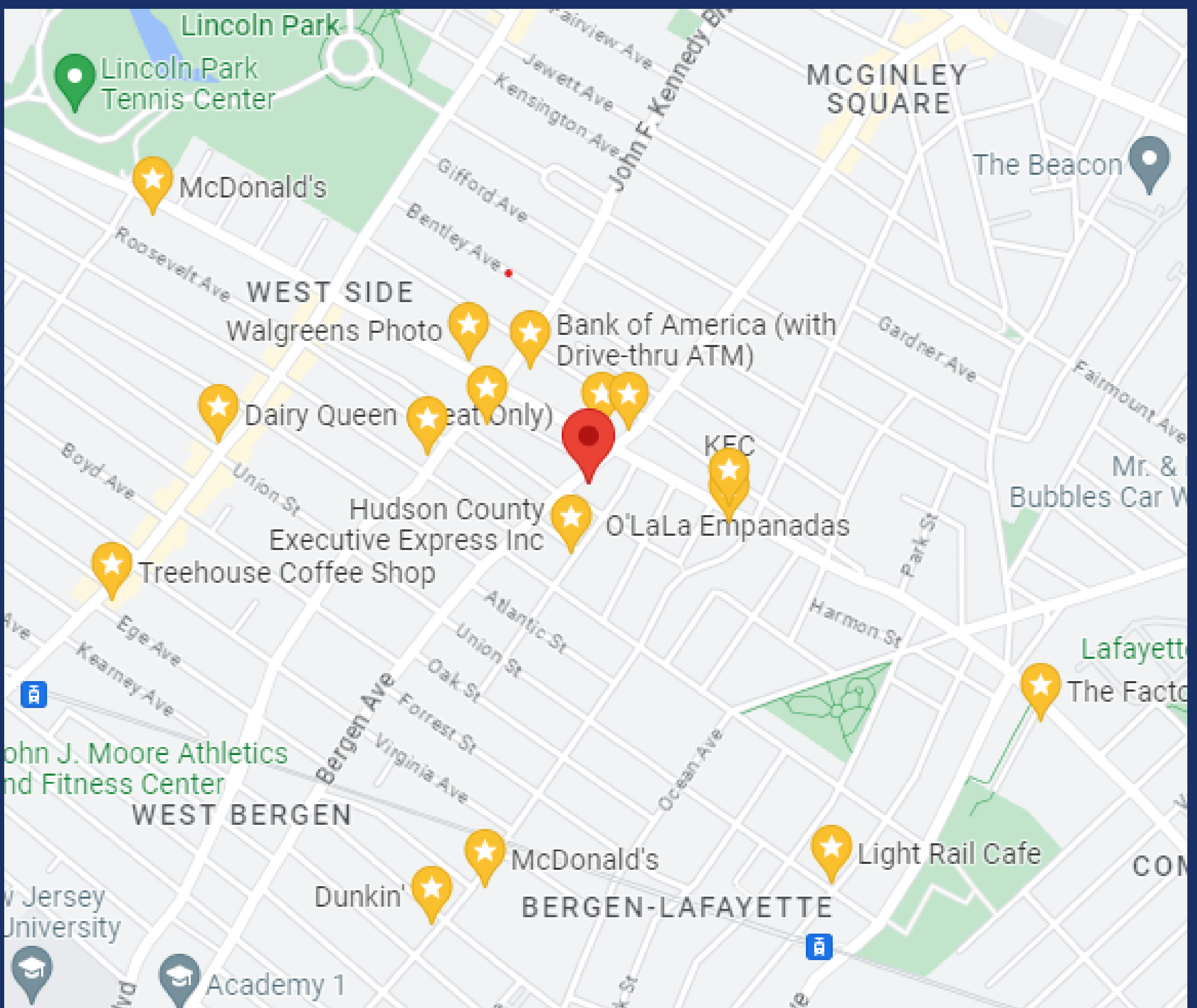
**JESSE RUBENS**  
212.786.2611  
[jrubens@jlrre.com](mailto:jrubens@jlrre.com)

**MICHAEL SMITH**  
917.701.4361  
[msmith@jlrre.com](mailto:msmith@jlrre.com)

# 500 Bergen Ave

Bronx, NY

## Retail Neighbors



### ***Contacts:***

**JESSE RUBENS**  
**212.786.2611**  
**jrubens@jlrre.com**

**MICHAEL SMITH**  
**917.701.4361**  
**msmith@jlrre.com**

# 500 Bergen Ave

## Bronx, NY

### BUILDING FEATURES

- Inline Retail - Dollar Deals (VACANT)
- ~~Retail Corner~~ - Longwood Fishmarket (LEASED)
- Close to HUB (intersection of 3rd Ave, Lewis Ave, Melrose Ave and 149th St) in the Mott Haven neighborhood of the Bronx.
- Bustling retail area with heavy foot traffic emanating from the HUB
- Pedestrian traffic totals over 250,000 daily
- Close to all public transportation, including the **2** and the **5** trains which stop at the HUB, and the train **4** which stops at 149th St and Grand Concourse.
- ~~Retail corner~~ is ideal for QSR (and vented)
- Inline is ideal for nonprofits, social services, and fitness facilities
- The space lends itself to medical, restaurants, retailers, nonprofits, and schools
- 100'+ of frontage on Bergen Ave
- 50' frontage on 148th St
- Possession is arranged

#### *Contacts:*

JESSE RUBENS  
212.786.2611  
jrubens@jlrre.com

MICHAEL SMITH  
917.701.4361  
msmith@jlrre.com



**500 Bergen Ave**  
**Bronx, NY**



**Inline Retail**  
**8,500rsf**



**JLR Realty Inc**

# 500 Bergen Ave Bronx, NY

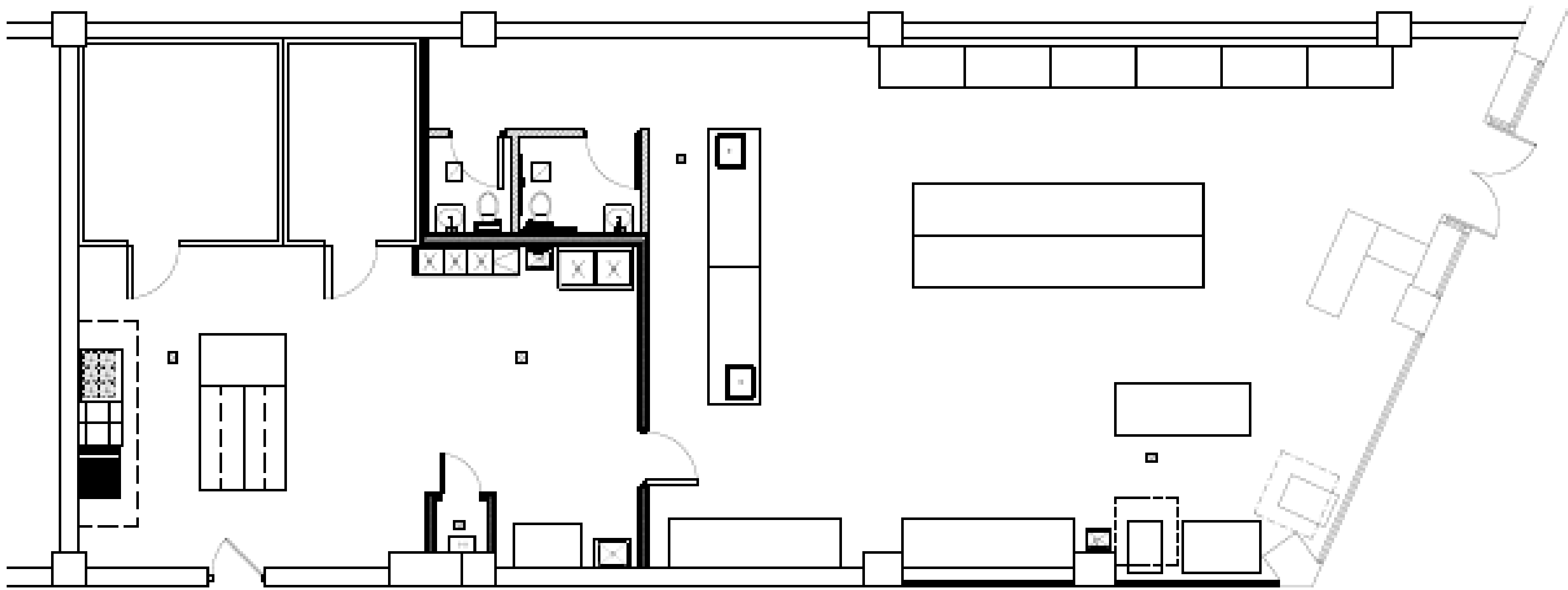


**LEASED**  
**Retail Corner**  
**~~3,200rsf~~**



JLR Realty Inc

**500 Bergen Ave**  
**Bronx, NY**



**LEASED**  
**Retail Corner**  
**~~Floorplan~~**



JLR Realty Inc





JLR Realty Inc

# 500 Bergen Ave Bronx, NY

## ***Contacts:***

**JESSE RUBENS**  
**212.786.2611**  
**[jrubens@jlrre.com](mailto:jrubens@jlrre.com)**

**MICHAEL SMITH**  
**917.701.4361**  
**[msmith@jlrre.com](mailto:msmith@jlrre.com)**